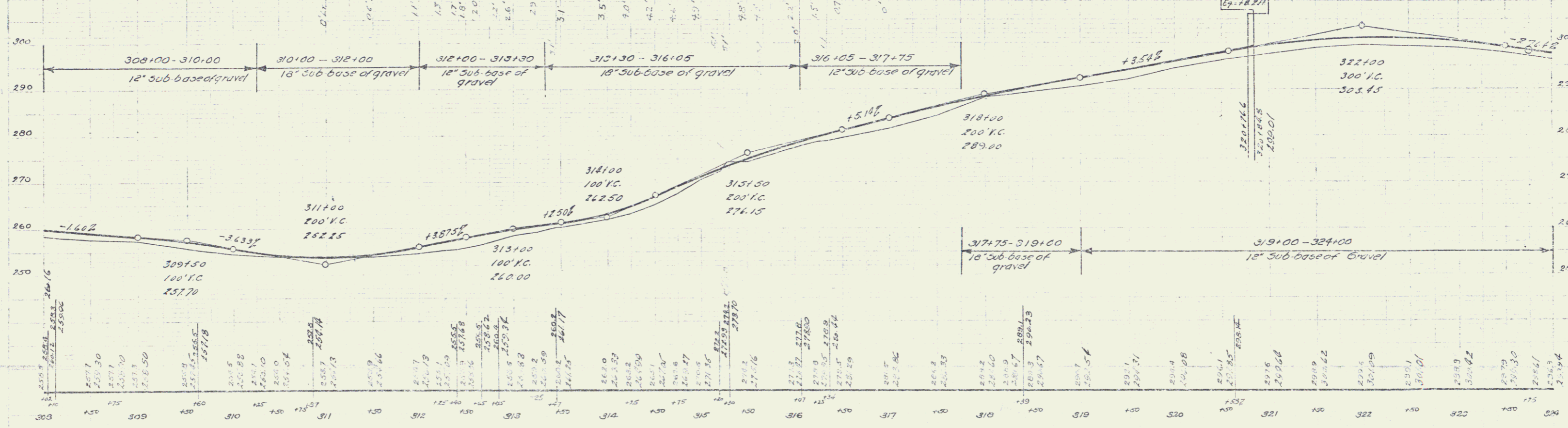
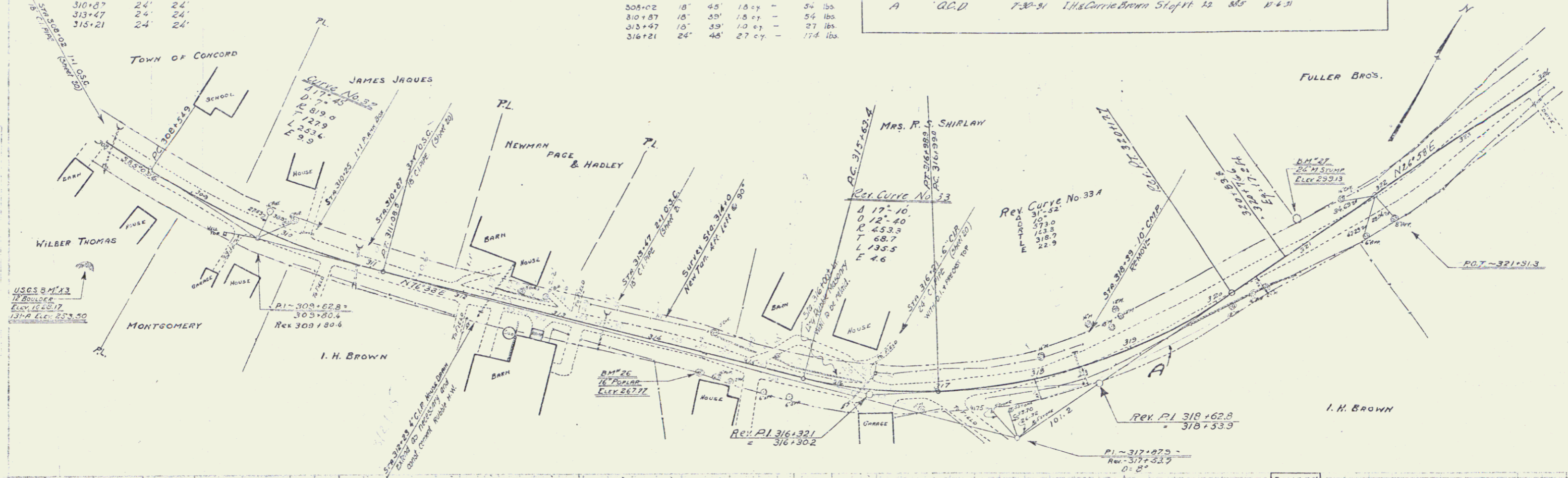


Station	Left Right
308+02	24' 24'
310+87	24' 24'
313+47	24' 24'
316+21	24' 24'

Station	Left Right
312+23	1

Station	Diam.	Length	Conc. A	Conc. C	Rein. Steel
308+02	18"	45'	1.8 cy	-	54 lbs
310+87	18"	59'	1.8 cy	-	54 lbs
313+47	18"	59'	1.8 cy	-	27 lbs
316+21	24"	46'	2.7 cy	-	174 lbs

Parcel	Kind of Instrument	Date of Grant	Grantor	Grantee	Recorded Concord	Book Page	Date	Remarks
A	Q.C.D.	7-30-31	I.H. & Carrie Brown	Sleftt	32	385	11-4-31	



B.M. 26 - SPIKE IN ROOT OF 12" POP - 14' RT OF STA 314+50 ELEV 267.77
 B.M. 27 - SPIKE IN ROOT OF 24" MARK STUMP, 24' LT OF STA 321+05 ELEV 259.43

Series No. 1210
 Sheet 11 of 11