

WOOD GUARD RAIL REQUIRED

CHAIN STATION	LEFT	RIGHT
297+02	24'	-
301+70	24'	-

CABLE GUARD RAIL REQUIRED

STATIONS	LENG.	CONST.	PAVING
295+24-305+24	1000	60	1080

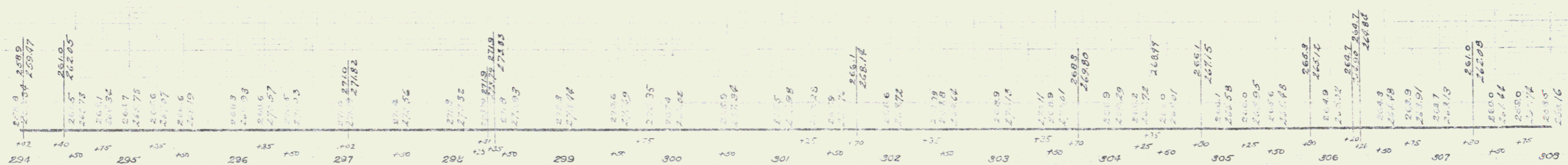
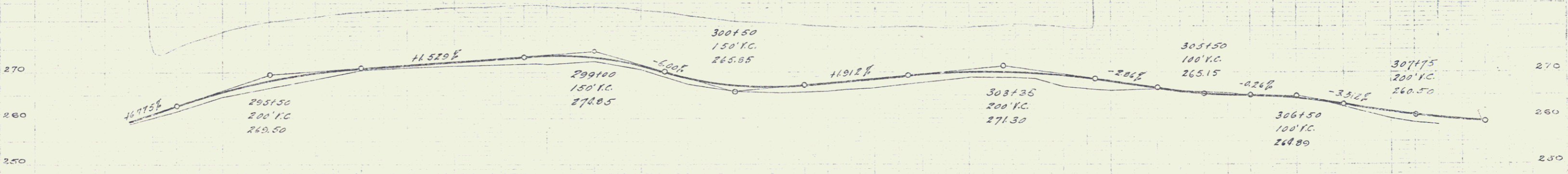
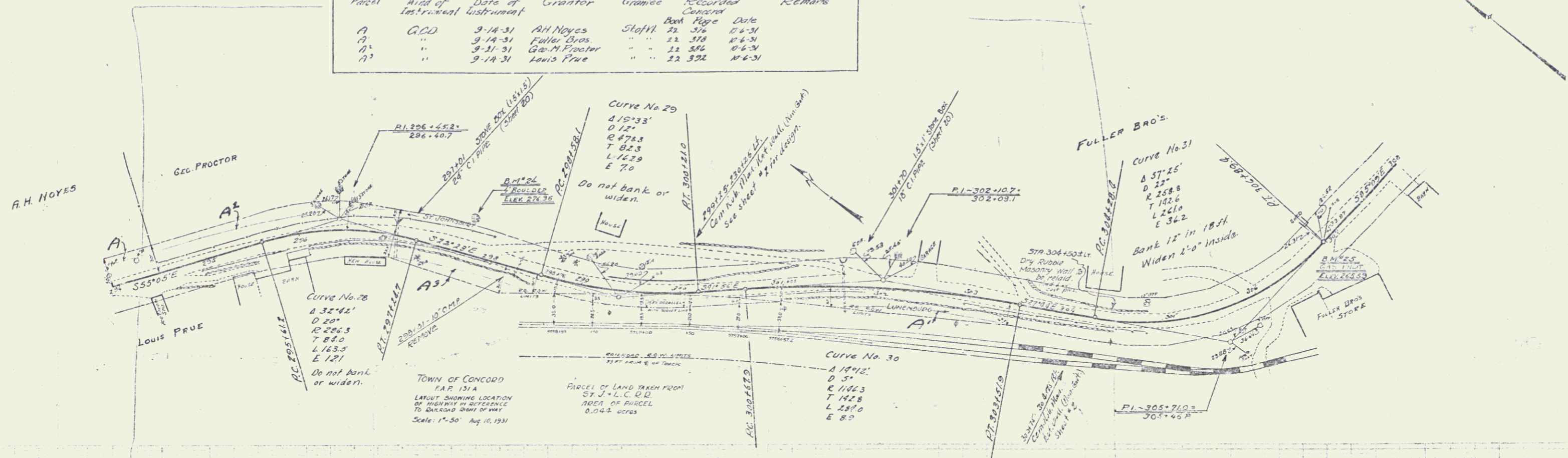
Cent. Riv. Mass. Co. Wall

Sta.	Volume
295+24-301+25	150 cu yd.
303+75-304+15	150 "

NEW CAST IRON PIPE COVERTS REQUIRED

SECTION	DIAM.	LENG.	QTY	CONC. REINFORCED
297+02	24"	48'	1.3 eq.	27 in.
301+70	18"	54'	1.0 eq.	21 in.

Parcel	Kind of Instrument	Date of Instrument	Grantor	Grantee	Recorded	Remarks
A	G.D.D.	9-14-31	A.H. Noyes	Sloft	22 378	12-6-31
A'	"	9-14-31	Fuller Bros.	"	22 378	12-6-31
A''	"	9-31-31	Geo. M. Proctor	"	22 378	12-6-31
A'''	"	9-14-31	Louis Prue	"	22 378	12-6-31



B.M. 24 - TOP OF 4' BANNER, 85' W. OF STA. 297+75 - ELEV. 274.93
 B.M. 25 - N.W. COR. CONC. PAV. 300' W. FROM STA. 304+04 - ELEV. 265.59