

WOOD GUARD RAIL REQUIRED

ELEV. STA.	LEFT	RIGHT
131+27	24'	24'
132+82	24'	24'
141+81	24'	24'

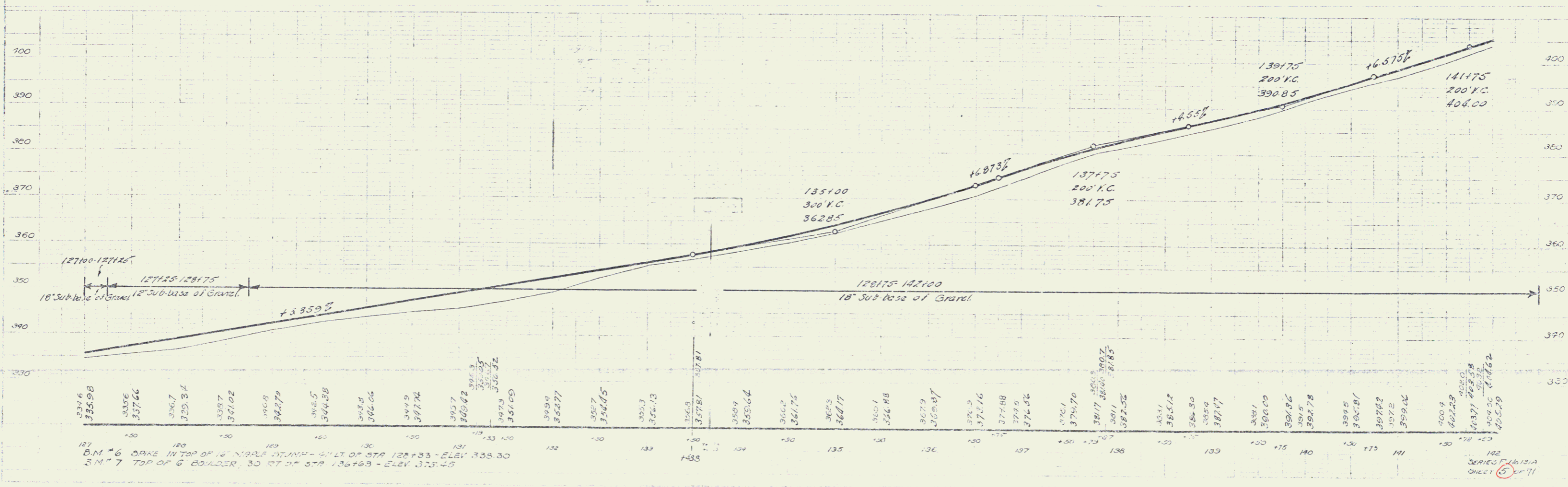
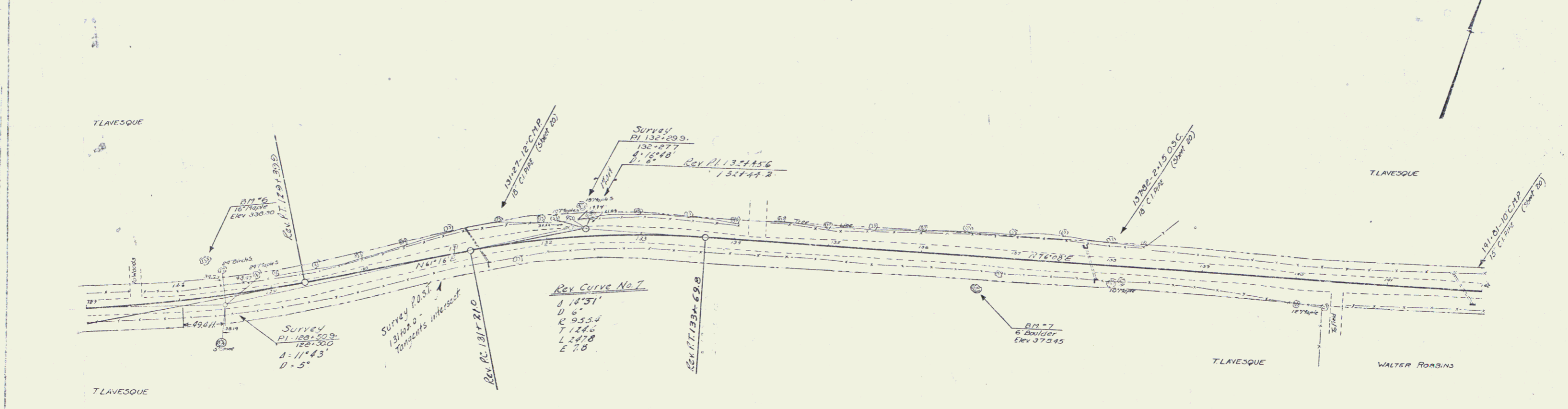
CABLE GUARD RAIL REQUIRED

SIREMS	LENG.	CONST.	PAYLENE
131+00-141+48	48'	40'	88'

NEW CAST IRON PIPE CULVERTS EQUIPPED

STATION	DIAM.	LENG.	CONC.	CONC.	REIN. STEEL
131+27	18"	40'	1.8 cy	—	75 lbs.
137+82	18"	42'	2.6 cy	—	102 lbs.
141+81	15"	39'	—	15 cy	17 lbs.

STA.	100	110	120	130	140
9	131.71	132.87	134.03	135.19	136.35



5