

INDEX OF SHEETS

SHEET NO. 1	TITLE PAGE
2	TYPICAL CROSS-SECTION OF IMPROVEMENT
3	BANKING AND WIDENING TABLES
4-12	PLAN AND PROFILE SHEETS
13	STANDARD STRUCTURE SHEET
14	"
15	"
16	"
16-A	"
17-42	CROSS SECTIONS

FED. ROAD DIST. NO.	STATE	FISCAL YEAR	SHEET NO.	TOTAL SHEETS
9	VT.	E-131-D	1052	1

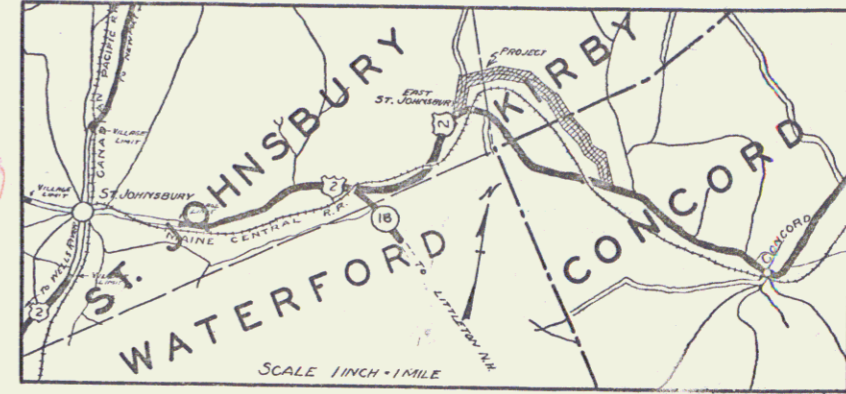
STATE OF VERMONT  
STATE HIGHWAY DEPARTMENT

PLAN AND PROFILE OF PROPOSED  
STATE HIGHWAY

TOWNS OF ST. JOHNSBURY-KIRBY *Pin # 99R147*

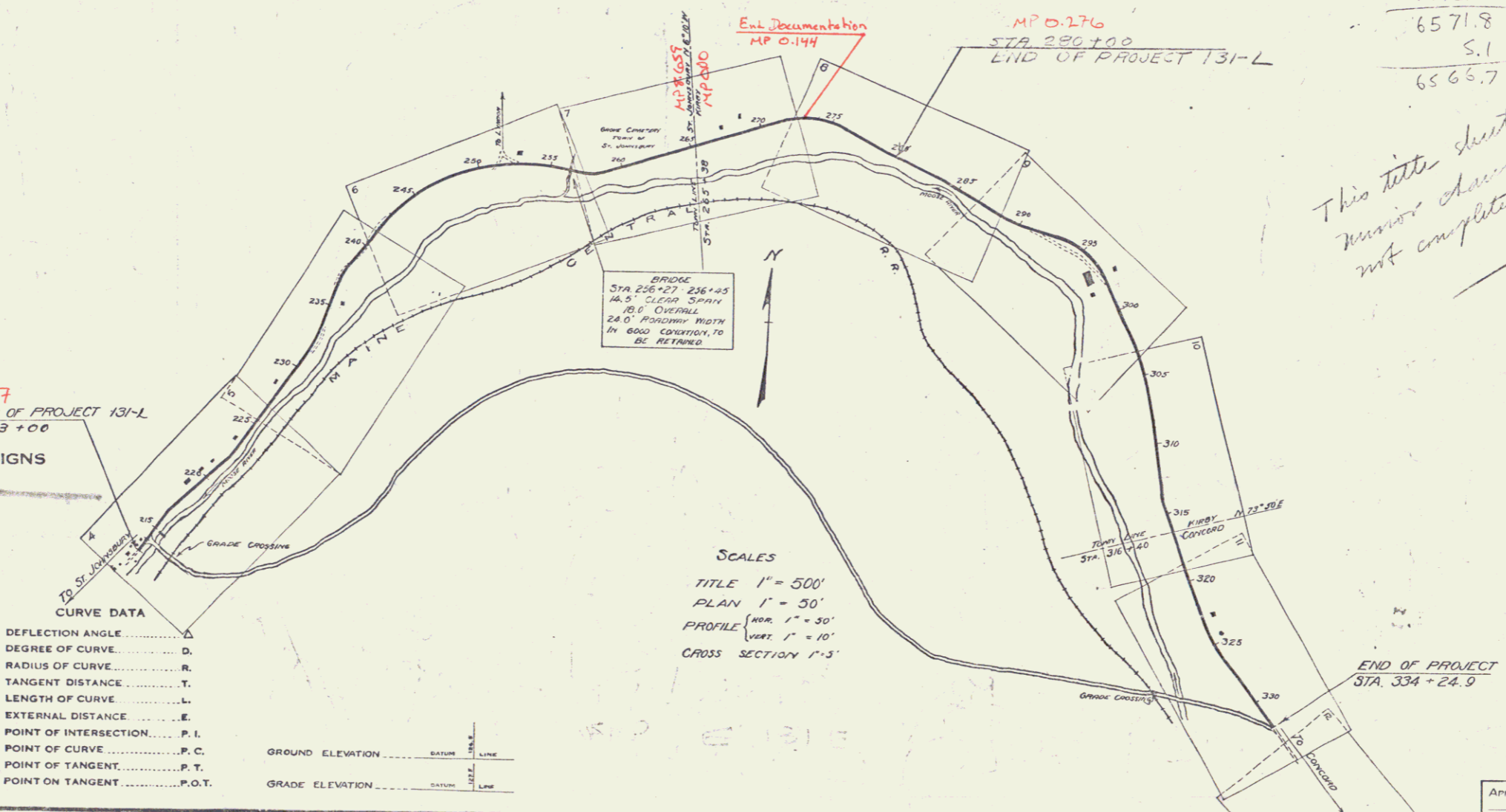
ST. JOHNSBURY, VT.-LANCASTER, N.H. ROAD

RELOCATION OF ROUTE US-2 BETWEEN THE STATION ROAD IN EAST ST. JOHNSBURY VILLAGE, EASTERLY 2.275 MILES, TO ITS INTERSECTION WITH US-2  
LENGTH OF PROJECT 12,014.9 FT. = 2.275 MILES  
*6676.5 1.264*



LENGTH	MI.
CONTRACTOR STATE ESTIMATE ACCOUNT	YEAR 19 37
LOCATION	U.S. 2 from the residence of Dr. Sidney McCurdy, northwesterly 1.3 miles to 1100 feet east of the residence of Harry Smith.
DATE	11-1-37
DESIGNER	St. Johnsbury, Vt.
TYPE	Grading, base & drainage

*MP 7.67*  
BEGINNING OF PROJECT 131-L  
STA. 213 +00



SCALES  
TITLE 1" = 500'  
PLAN 1" = 50'  
PROFILE (HOR. 1" = 50', VERT. 1" = 10')  
CROSS SECTION 1" = 5'

CURVE DATA

DEFLECTION ANGLE	..... D.
DEGREE OF CURVE	..... D.
RADIUS OF CURVE	..... R.
TANGENT DISTANCE	..... T.
LENGTH OF CURVE	..... L.
EXTERNAL DISTANCE	..... E.
POINT OF INTERSECTION	..... P.I.
POINT OF CURVE	..... P.C.
POINT OF TANGENT	..... P.T.
POINT ON TANGENT	..... P.O.T.

GROUND ELEVATION	BATHY LINE
GRADE ELEVATION	BASELINE

*280  
214+28.2  
6571.8  
S.I.  
6566.7*

*This title sheet subject to revision changes - quantity sheet not completed - included*

RIGHT-OF-WAY DIVISION  
TOWN FILE  
PERPETUAL  
Rte U.S. 2  
Town of U.S. 2  
(To Be Returned To R.O.W. Division)

*Project: F131L*

RECOMMENDED \_\_\_\_\_  
DISTRICT ENGINEER BUREAU OF PUBLIC ROADS

RECOMMENDED FOR APPROVAL \_\_\_\_\_  
CHIEF ENGINEER BUREAU OF PUBLIC ROADS

APPROVED \_\_\_\_\_  
DIRECTOR BUREAU OF PUBLIC ROADS

APPROVED *01/01/38* ROAD ENGINEER  
SERIES F. NO. 011 FILED  
SHEET 1 OF 2

2<sup>ND</sup> STAGE  
WOOD GUARD RAIL

CULV. STA.	LT.	RT.
216+00	24'	-

2<sup>ND</sup> STAGE  
GUIDE POSTS OF WOOD

CULV. STA.	LT.	RT.
217+00	1	-
219+62	1	-
222+21	1	-
226+74	1	-

2<sup>ND</sup> STAGE  
CABLE GUARD RAIL

STA - STA	LT+RT	LENG	CONST.	PAYLENG
215+00 - 218+50	RT	352'	40'	392'
219+50 - 221+00	RT	150'	20'	170'

1<sup>ST</sup> STAGE  
REINFORCED CONCRETE PIPE CULVERTS

STATION	Lo-R	DIAM	LENG	CONC. A	STEEL	GRATES	CRM
213+10-213+55	L	12"	44'	1.9 cy	150#	1	-
213+55-214+35	L	12"	80'	2.9 cy	241#	1	-
214+35-216+00	L	12"	164'	27 cy	217#	1	-
213+40R-213+55L	E	12"	39'	27 cy	217#	1	-
216+00	E	15"	12'	20 cy	415#	2	12 cy
217+00	E	12"	44'	24 cy	222#	-	12 cy
213+40	R	15"	44'	24 cy	222#	-	12 cy
219+62	R	15"	44'	21 cy	174#	1	12 cy

2<sup>ND</sup> STAGE  
GROUTED COBBLE GUTTER REQUIRED

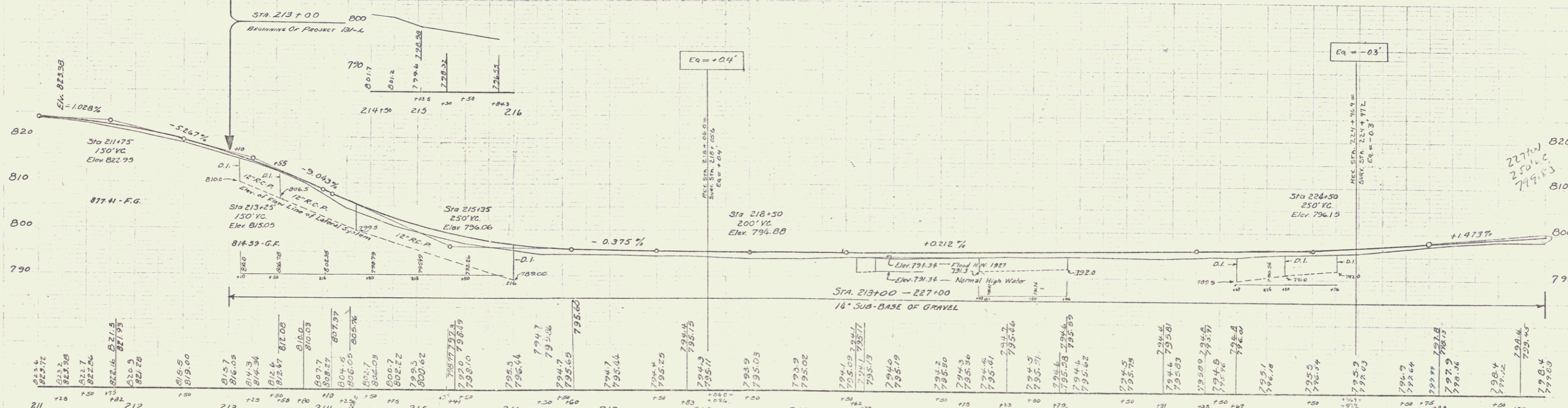
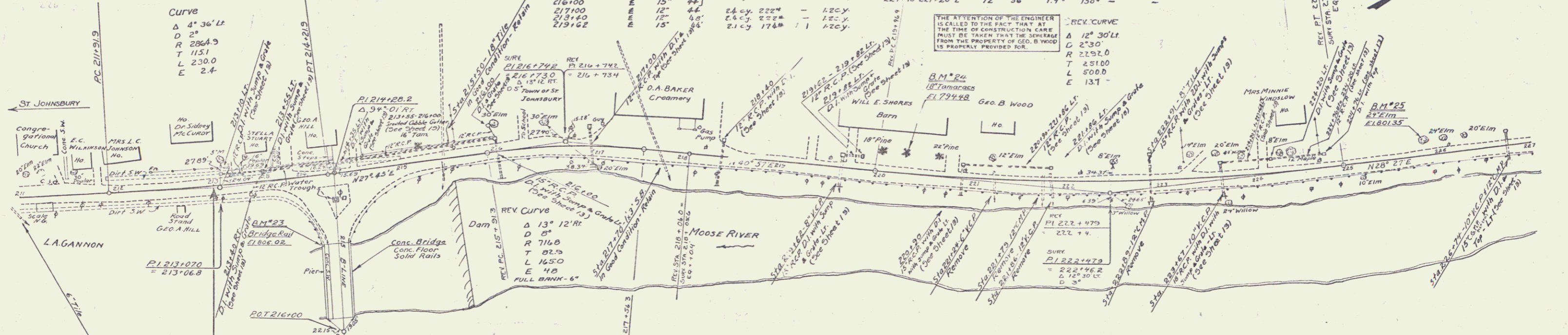
STA - STA	LT+RT	LENG	WIDTH	AREA
213+35-216+00	LT	265'	6"	163 sq. y.

2<sup>ND</sup> STAGE  
CORR. GALV. METAL PIPE (ASH STD) CULVERTS

STATION	Lo-R	DIAM	LENG	CONC. A	STEEL	GRATES	CRM
226+74	E	15"	36'	2.2	130	14	-

1<sup>ST</sup> STAGE  
REINFORCED CONCRETE PIPE CULVERTS

STATION	Lo-R	DIAM	LENG	CONC. A	STEEL	GRATES	CRM
219+62-219+62	L	12"	20'	1.5 cy	150#	1	-
220+30	L	15"	40'	2.3	183#	1	14 cy
221+85-222+00	L	12"	36'	1.9	150#	1	-
222+31	E	15"	44'	2.2	183#	2	14 cy
223+67	E	18"	40'	3.3	188#	1	17 cy
224+20-223+68	L	12"	36'	1.9	150#	1	-
224+70-223+20	L	12"	36'	1.9	150#	1	-



B.M. #23 Point Spot on Conc. Bridge Rail 18' Rt Sta 215+05 B' Line E1,806.02  
 R-3 U.S.C.G.S. B.M. Bronze Plat on Ledge 37511 Sta 216+00 E1,790.723  
 B.M. #24 Spike in Root 18' Tamarack 18' 27' Sta 220+29 E1,794.748  
 B.M. #25 " " 24' 21m 13' 5' Lt Sta 225+87 E1,801.35

SERIES E No 131-C  
 SHEET 6 OF 27 SHEETS

2ND STAGE CABLE GUARD RAIL REQUIRED				
Sta. - Sta.	Lt. - Rt.	Long.	Const'd	Rail length
227+00 - 232+30	Rt.	530'	20'	550'
234+24 - 236+02	Rt.	176'	40'	216'
240+00 - 241+00	Rt.	100'	20'	120'

2ND STAGE GUIDE POSTS OF WOOD REQUIRED		
Sta.	Lt.	Rt.
228+03	1	-
229+50	1	-
238+63	1	1

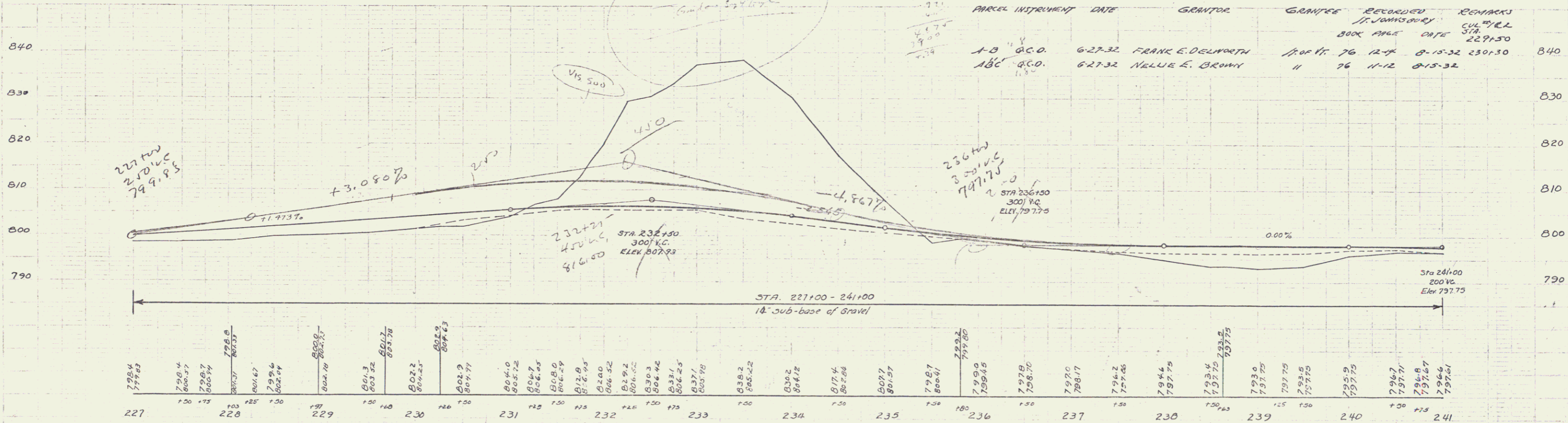
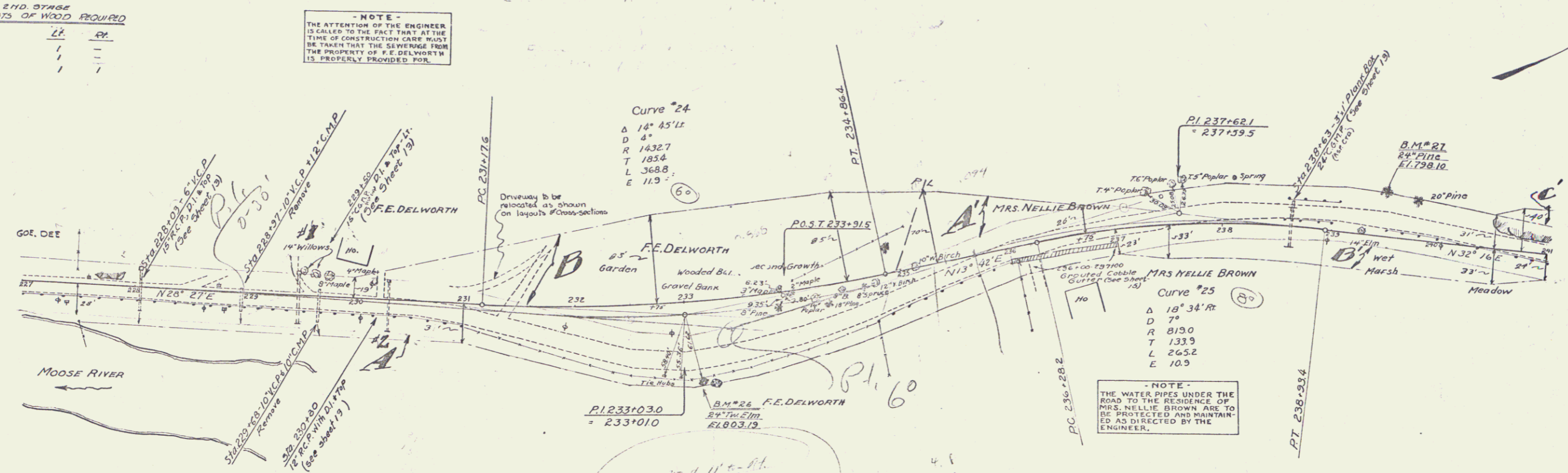
1ST STAGE NEW REINF. CONCRETE PIPE CULVERTS REQUIRED				
Sta.	Diam.	Len.	Conc. R.	Slope
228+03	15"	44'	2.27	1.64%
230+30	12"	45'	1.87	1.65% 1.27

2ND STAGE GROUTED COBBLE GUTTER REQUIRED				
Sta. - Sta.	Lt. - Rt.	Long.	Width	Area
236+00 - 237+00	Rt.	100'	4'6"	50 sq. ft.

CORR. GALV. METAL PIPE (ASPTD) CULVERTS				
STATION	DIA.	LENG.	CONG. Y.	STEEL CRM.
229+50	45"	44'	2.4 C.Y.	14 C.Y.
236+63	24"	44'	-	5.4 "

191-L 1932 5 27

**NOTE**  
THE ATTENTION OF THE ENGINEER IS CALLED TO THE FACT THAT AT THE TIME OF CONSTRUCTION CARE MUST BE TAKEN THAT THE SEWERAGE FROM THE PROPERTY OF V.E. DELWORTH IS PROPERLY PROVIDED FOR.



PARCEL INSTRUMENT	DATE	GRANTOR	GRANTEE	RECORDED	REMARKS
A-B	6-27-32	FRANK E. DELWORTH	1700 Ft. 76 12-4	8-15-32	230+30
A-C	6-27-32	NELLIE E. BROWN	" 76 11-12	8-15-32	

B.M. #26 Spike in Root 24" Twin Elm 70' At Sta. 233+00 El. 803.19  
 B.M. #27 " " " 24" Pine 35' Lt. Sta. 239+43 El. 798.10

SERIES F No. 191-L  
 SHEET 5 OF 27 SHEETS

**2ND STAGE WOOD GUARD RAIL REQUIRED**

CULV. STA.	LT.	RT.
243+56	24'	-
245+14	24'	-

**2ND STAGE GUIDE POLES OF WOOD REQUIRED**

CULV. STA.	LT.	RT.
244+09	1	1
250+30	1	1

**CABLE END STAGE GUARD RAIL REQUIRED**

STA. - STA.	LT. - RT.	CONC'D	Dist. Length
251100 - 245160	RT	480'	20' 430'
254103 - 256127	RT	24'	20' 44'
254103 - 256127	LT.	24'	20' 44'
254145 - 256169	RT.	24'	20' 44'
256145 - 256169	LT.	24'	20' 44'

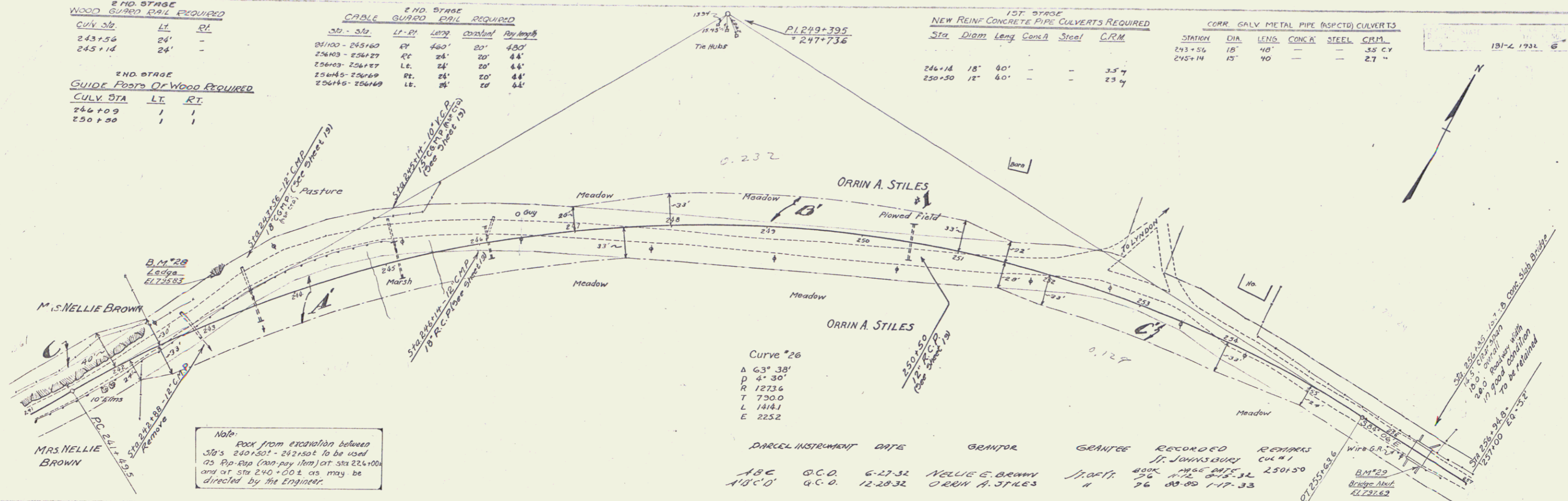
**1ST STAGE NEW REINF. CONCRETE PIPE CULVERTS REQUIRED**

Sta.	Diam.	Length	Conc'd	Steel	C/R.M.
246+14	18"	40'	-	-	3.57
250+30	12"	60'	-	-	23.47

**CORR. GALV. METAL PIPE (ASPECT) CULVERTS**

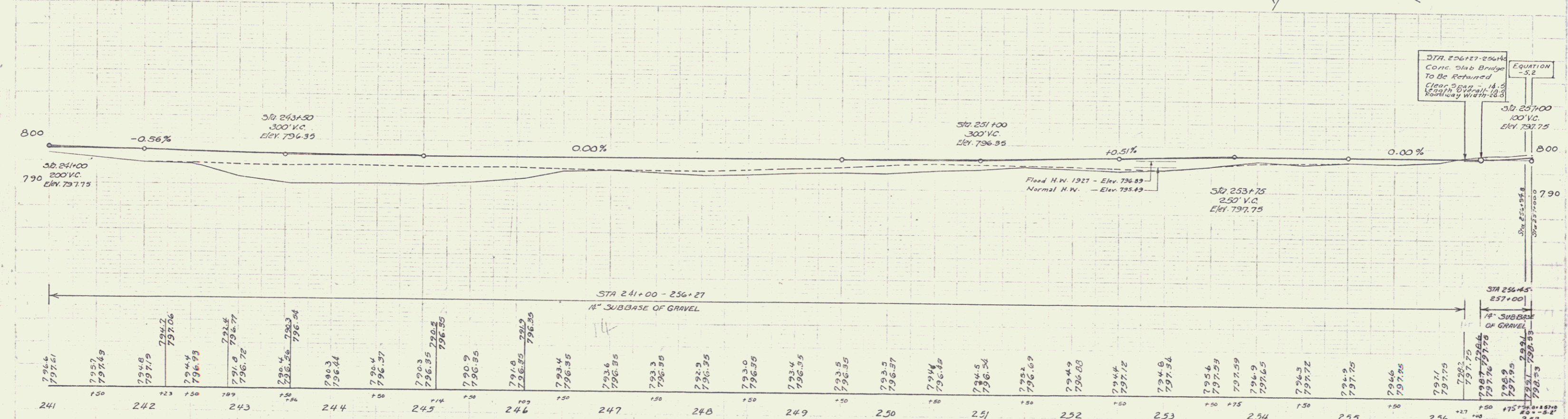
STATION	DIA.	LENGTH	CONC'D	STEEL	C/R.M.
243+56	18"	40'	-	-	3.57
245+14	15"	40'	-	-	2.71

131-L 1931 6" 27



Note: Rock from excavation between Sta's 240+50 to 242+00 to be used as Rip-Rap (non-pay item) at Sta 224+00 and at Sta 240+00 as may be directed by the Engineer.

PARCEL INSTRUMENT	DATE	GRANTOR	GRANTEE	RECORDED	REMARKS
ABC	G.C.D.	6-27-32	NELLIE E. BROWN	1936	1936 DATE 250+50
A'B'C'D'	G.C.D.	12-28-32	ORRIN A. STILES	76	89-89 1-17-33



B.M. #28 Point Spot on Ledge 44' Lt. Sta 243+35 El. 795.83  
 B.M. #23 Bridge Abut. 12' Rt. Sta 256+43 El. 797.69

SERIES F No 131-L  
 SHEET 6 OF 27 SHEETS

2ND STAGE  
GUIDE POSTS OF WOOD REQUIRED

Sta.	LF	RT
265+59	1	1

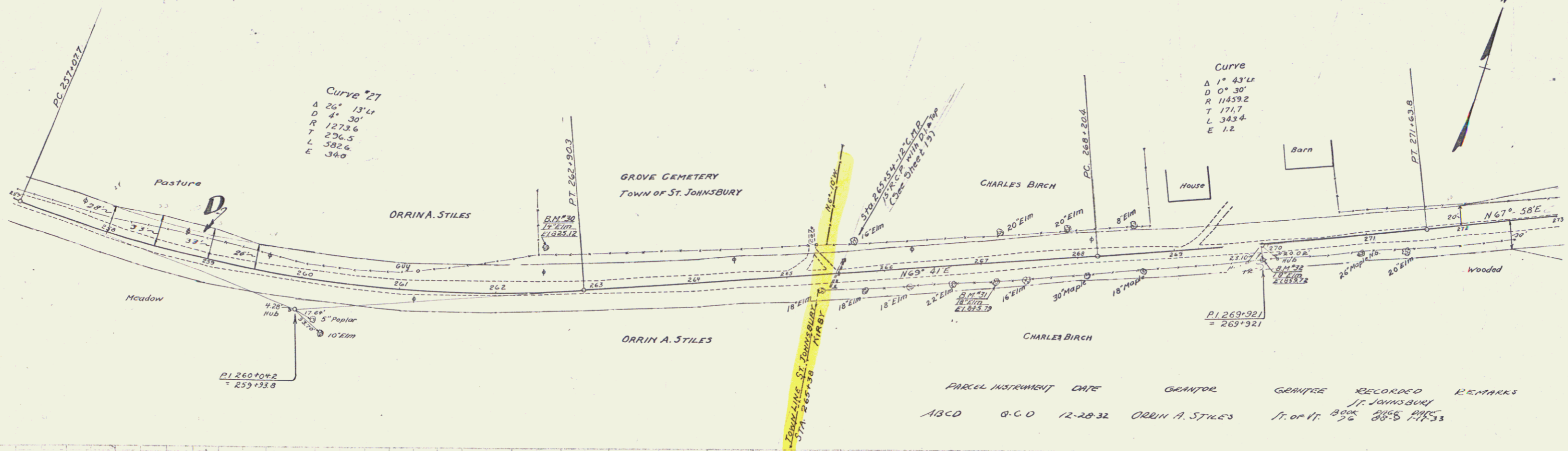
2ND STAGE  
CABLE GUARD RAIL REQUIRED

Sta.	LF	RT	Const.	Qty	Notes
272+50 - 273+00	50	20	70'		
272+00 - 273+00	50	20	70'		

1ST STAGE  
NEW REINF. CONCRETE PIPE CULVERTS REQUIRED

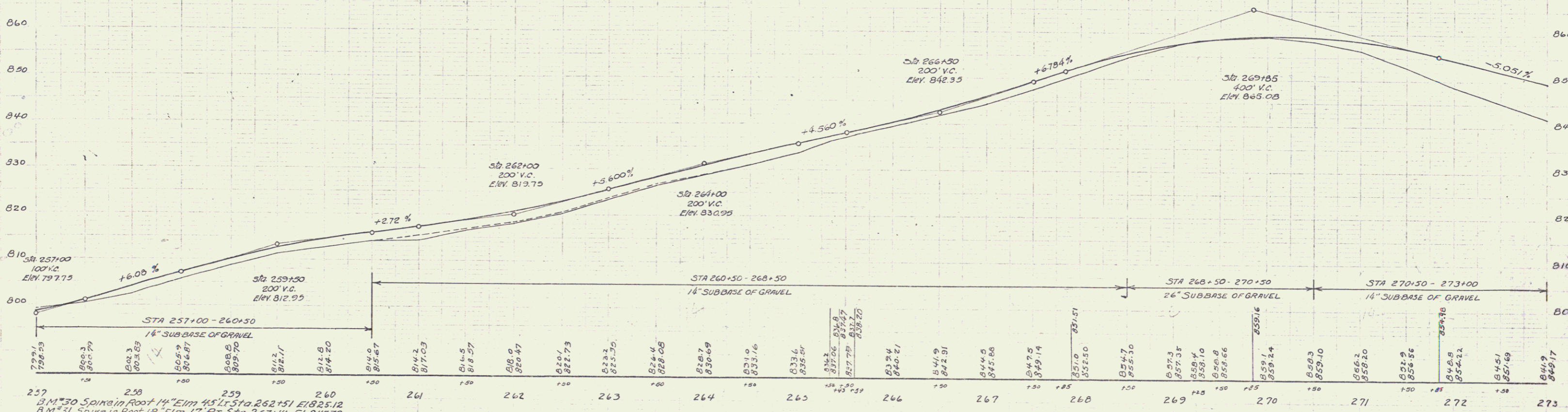
Sta.	Diam.	Len.	Cons.	Steel	CR.M.
263+54	15"	40'	1.8cy	16.5"	1.4

131-L 1932 7 27



PARCEL INSTRUMENT DATE GRANTEE GRANTEE RECORDED REMARKS

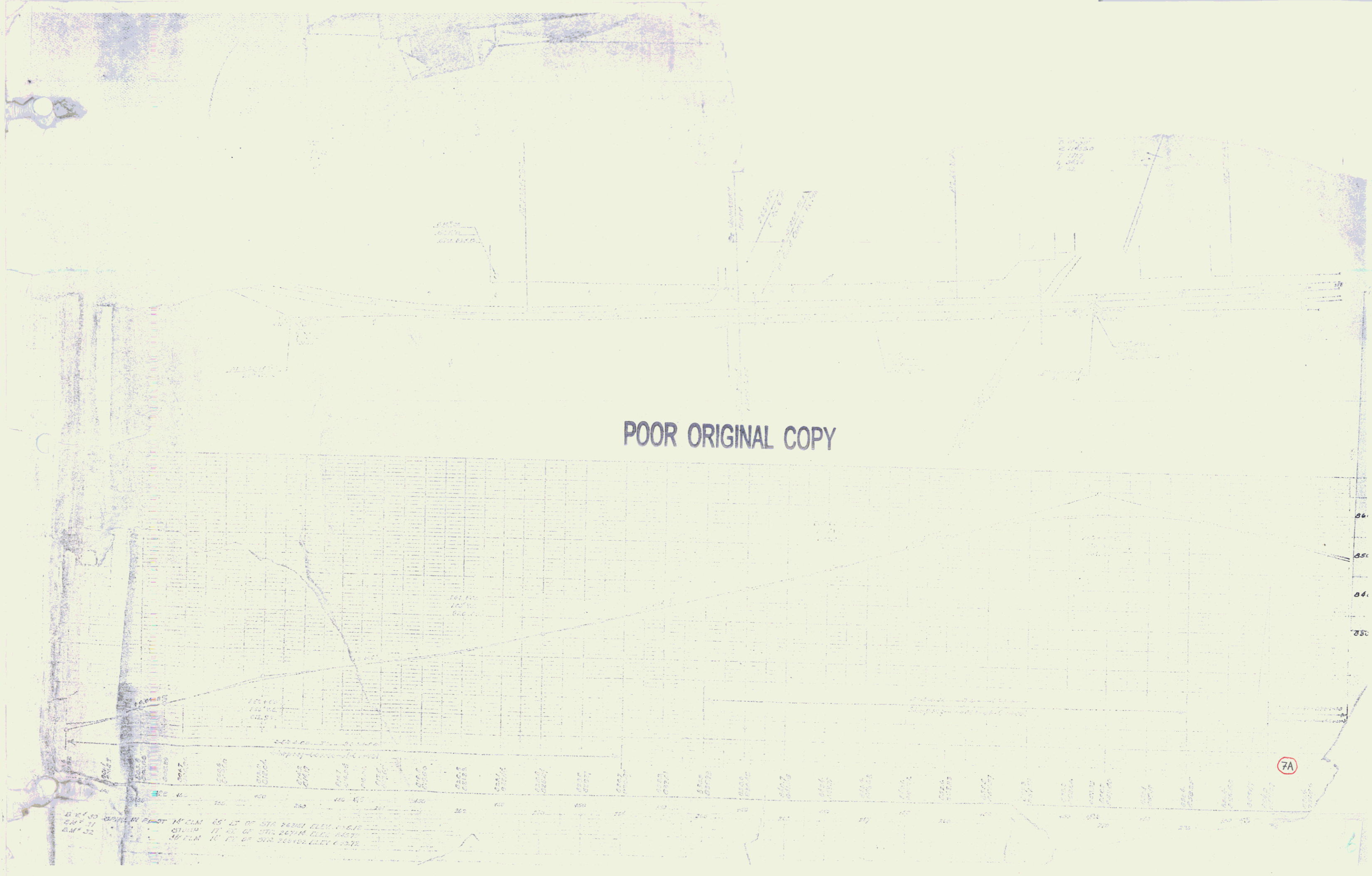
ABCD	O.C.D	12-28-32	ORRIN A. STILES	J. J. JAMESBURY	11.07.11.33
------	-------	----------	-----------------	-----------------	-------------



257 B.M. #30 Spike in Root 14" Elm 45' Lt. Sta. 262+51 El. 825.12  
 B.M. #31 Spike in Root 13" Elm 17' Rt. Sta. 267+14 El. 845.79  
 B.M. #32 Spike in Root 18" Twin Elm 14' Rt. Sta. 263+32 El. 859.72

SERIES F No. 131-L  
 SHEET 7 OF 27 SHEETS

POOR ORIGINAL COPY



0 10 20 30 40 50 60 70 80 90 100 110 120 130 140 150 160 170 180 190 200 210 220 230 240 250 260 270 280 290 300 310 320 330 340 350 360 370 380 390 400 410 420 430 440 450 460 470 480 490 500 510 520 530 540 550 560 570 580 590 600 610 620 630 640 650 660 670 680 690 700 710 720 730 740 750 760 770 780 790 800 810 820 830 840 850 860 870 880 890 900 910 920 930 940 950 960 970 980 990 1000

6