

2ND STAGE  
GUIDE POSTS OF WOOD REQUIRED

Sta.	LF	RT
265+59	1	1

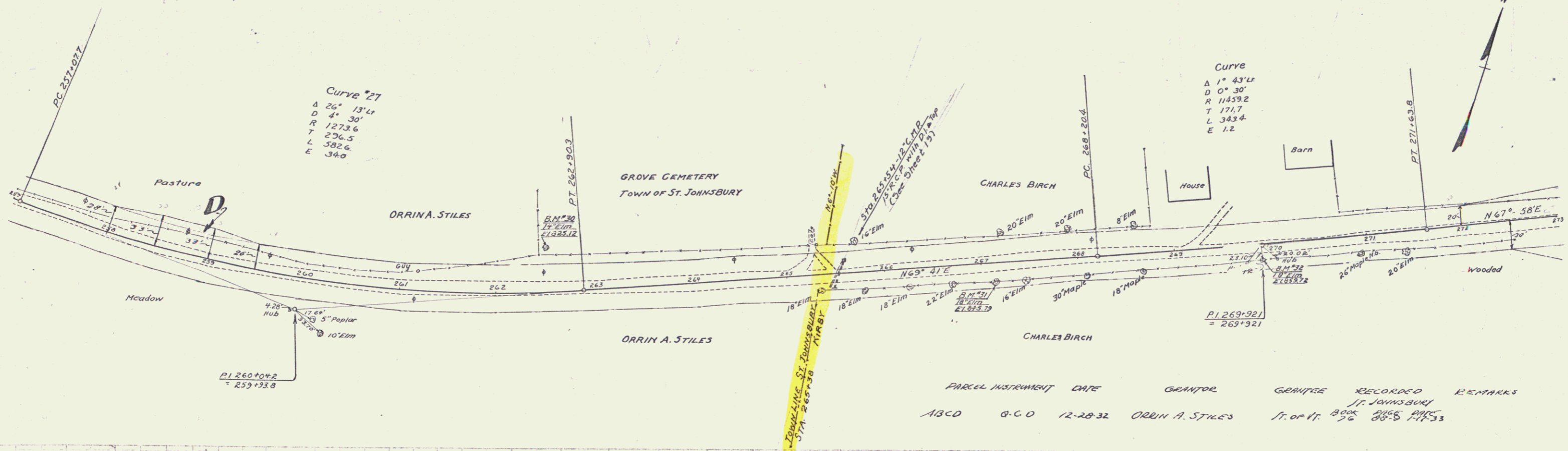
2ND STAGE  
CABLE GUARD RAIL REQUIRED

Sta.	LF	RT	Const.	Qty	Notes
272+50 - 273+00	50	20	70'		
272+00 - 273+00	50	20	70'		

1ST STAGE  
NEW REINF. CONCRETE PIPE CULVERTS REQUIRED

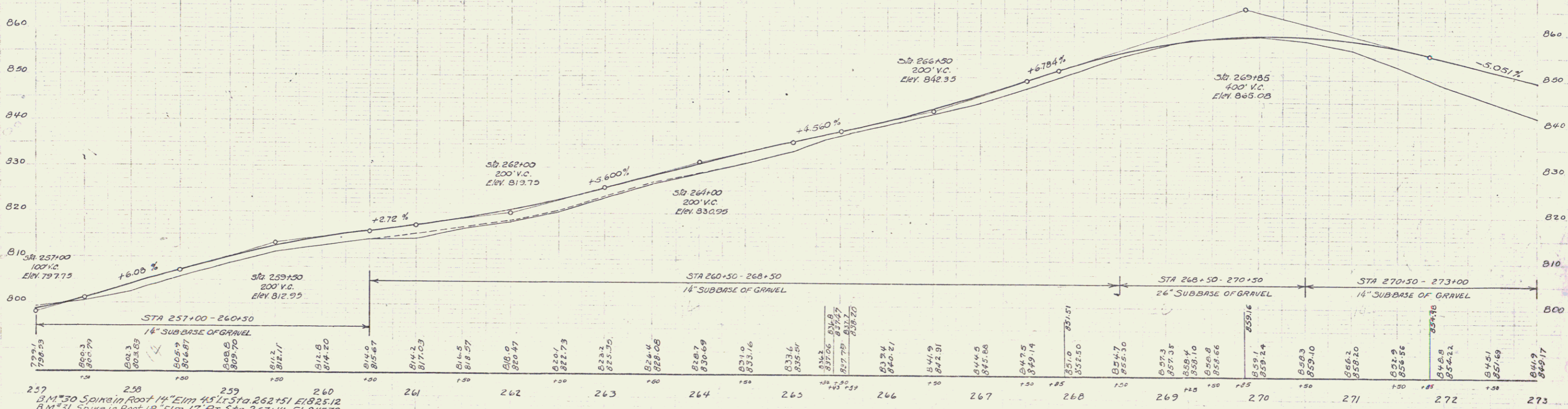
Sta.	Diam.	Len.	Const.	Steel	CR.M.
263+54	15"	40'	1.80	16.50	1.4

131-L 1932 7 27



PARCEL INSTRUMENT DATE GRANTEE GRANTEE RECORDED REMARKS

ABCD	O.C.D.	12-28-32	ORRIN A. STILES	J. JAMSBURY	11.07.11.33
------	--------	----------	-----------------	-------------	-------------



257 B.M. #30 Spike in Root 14" Elm 45' Lt. Sta. 262+51 El. 825.12  
 B.M. #31 Spike in Root 13" Elm 17' Rt. Sta. 267+14 El. 845.79  
 B.M. #32 Spike in Root 18" Twin Elm 14' Rt. Sta. 263+32 El. 859.72

SERIES F No 131-L  
 SHEET 7 OF 27 SHEETS