

**2ND STAGE
WOOD GUARD RAIL REQUIRED**

CULV. STA.	LT.	RT.
243+56	24'	-
245+14	24'	-

**2ND STAGE
GUIDE POSTS OF WOOD REQUIRED**

CULV. STA.	LT.	RT.
244+09	1	1
250+30	1	1

**CABLE 2ND STAGE
GUARD RAIL REQUIRED**

STA. - STA.	LT. - RT.	CONC'D	Dist. Length
251100 - 245160	RT	480'	20'
254103 - 256127	RT	24'	20'
254103 - 256127	LT.	24'	20'
254145 - 256169	RT.	24'	20'
256145 - 256169	LT.	24'	20'

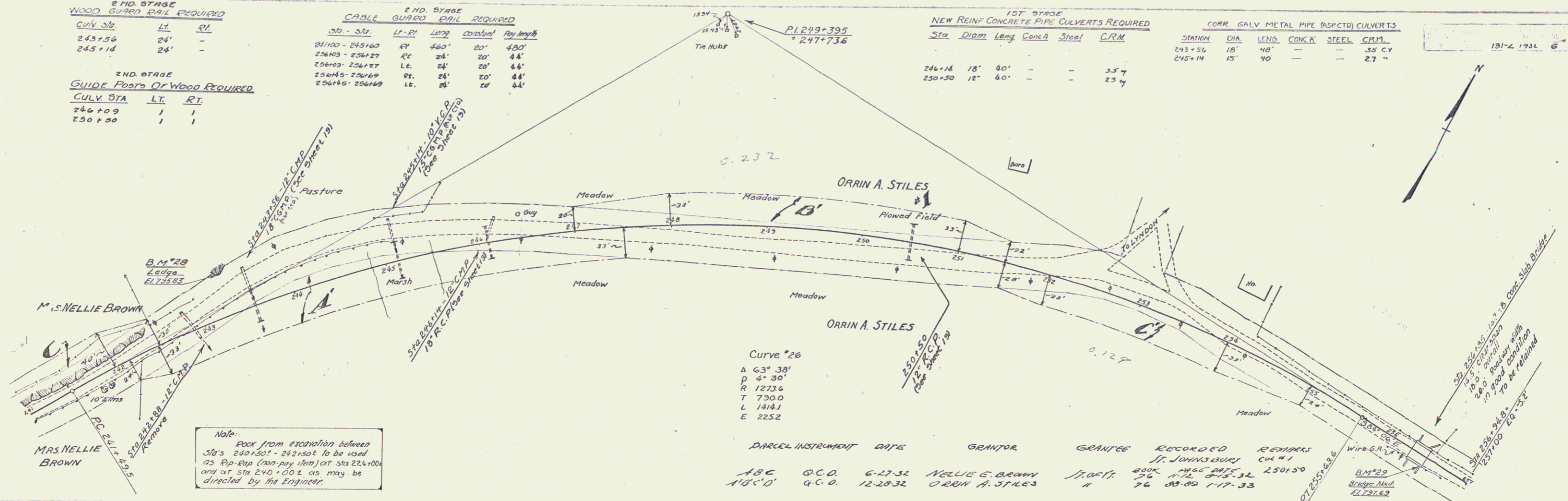
**1ST STAGE
NEW REINF. CONCRETE PIPE CULVERTS REQUIRED**

Sta.	Diam.	Length	Conc'd	Steel	C/R.M.
246+14	18"	40'	-	-	3.57
250+30	12"	60'	-	-	23.47

CORR. GALV. METAL PIPE (ASPECT) CULVERTS

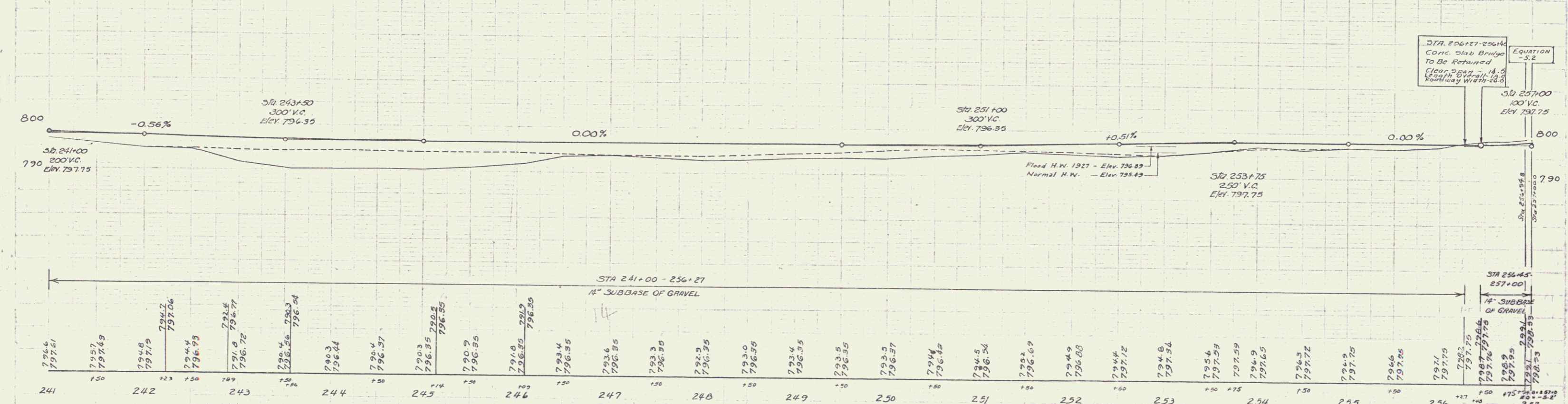
STATION	DIA.	LENGTH	CONC'D	STEEL	C/R.M.
243+56	18"	40'	-	-	3.57
245+14	15"	40'	-	-	2.71

131-L 1931 6" 27



Note: Rock from excavation between Sta's 240+00 to 242+00 to be used as Rip-Rap (see sheet 27) at Sta 244+00 and at Sta 240+00 as may be directed by the Engineer.

PARCEL INSTRUMENT	DATE	GRANTOR	GRANTEE	RECORDED	REMARKS
ABC	G.C.D.	6-27-32	NELLIE E. BROWN	1936	1936 DATE 250+50
A'B'C'D'	G.C.D.	12-28-32	ORRIN A. STILES	76	09-09 1-17-33



B.M. #28 Point Spot on Ledge 44' Lt. Sta. 243+35 El. 795.83
B.M. #23 Bridge Abut. 12' Rt. Sta. 256+43 El. 797.69

SERIES F No 131-L
SHEET 6 OF 27 SHEETS