

| 2ND STAGE CABLE GUARD RAIL REQUIRED | | | | |
|--|-----------|-------|---------|-------------|
| Sta. - Sta. | Lt. - Rt. | Long. | Const'd | Rail length |
| 227+00 - 232+30 | Rt. | 530' | 20' | 550' |
| 234+24 - 236+02 | Rt. | 176' | 40' | 216' |
| 240+00 - 241+00 | Rt. | 100' | 20' | 120' |

| 2ND STAGE GUIDE POSTS OF WOOD REQUIRED | | |
|---|-----|-----|
| Sta. | Lt. | Rt. |
| 228+03 | 1 | - |
| 229+50 | 1 | - |
| 238+63 | 1 | 1 |

| 1ST STAGE NEW REINF. CONCRETE PIPE CULVERTS REQUIRED | | | | |
|---|-------|------|----------|--------------|
| Sta. | Diam. | Len. | Conc. R. | Sp. C.R.M. |
| 228+03 | 15" | 44' | 22.7 | 138" 1.4 ft. |
| 230+30 | 12" | 45' | 1.8 ft. | 165" 1.2 ft. |

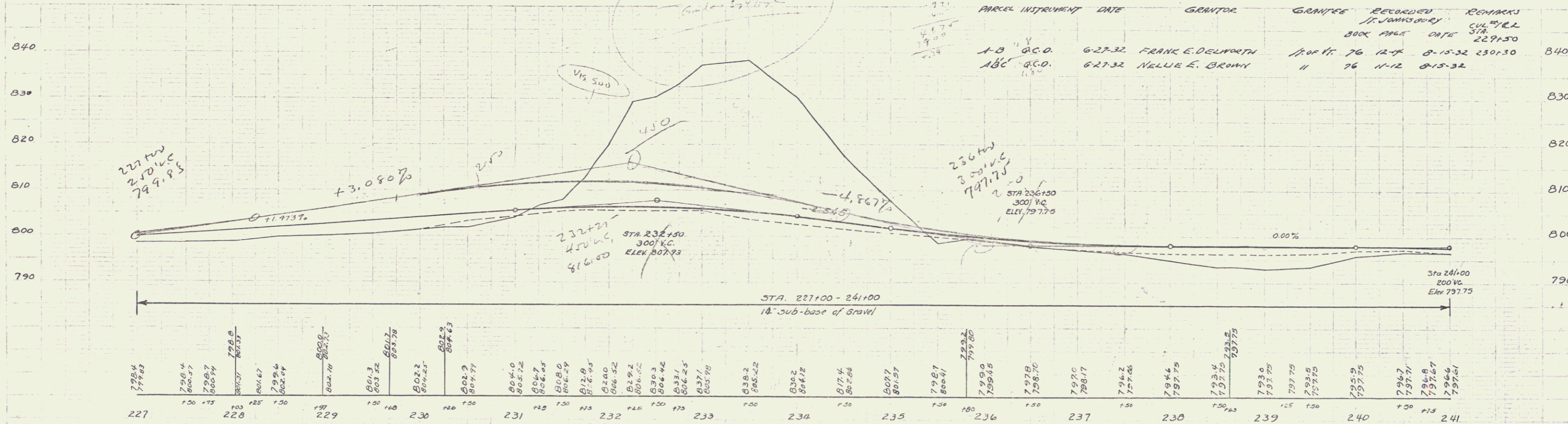
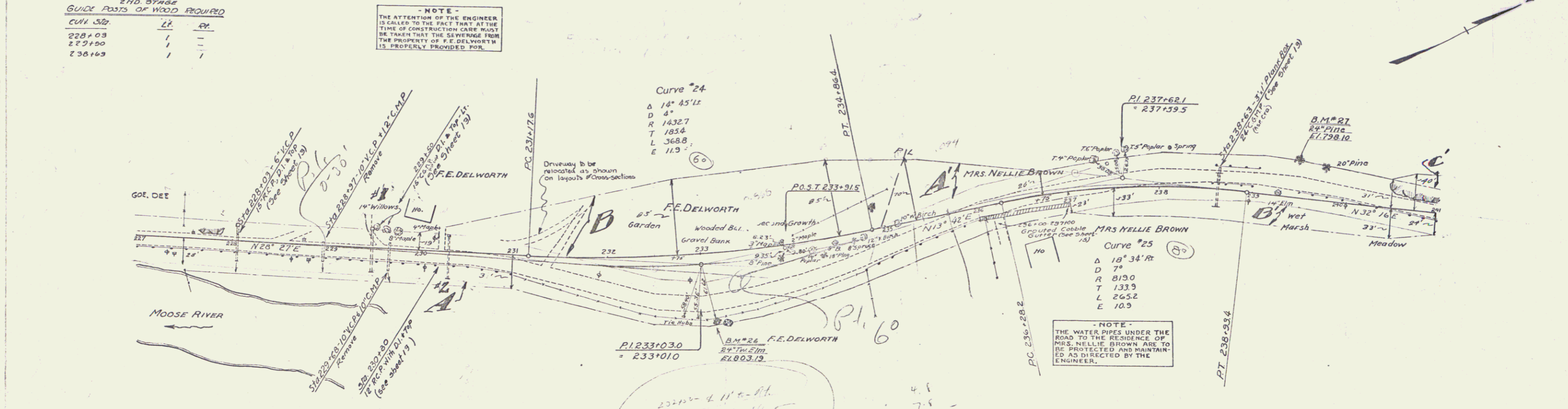
| 2ND STAGE GROUTED COBBLE GUTTER REQUIRED | | | | |
|---|-----------|-------|-------|------------|
| Sta. - Sta. | Lt. - Rt. | Long. | Width | Area |
| 236+00 - 237+00 | Rt. | 100' | 4'6" | 50 sq. ft. |

| CORR. GALV. METAL PIPE (ASPTD) CULVERTS | | | | |
|---|------|-------|----------|------------|
| STATION | DIA. | LENG. | CONG. Y. | STEEL CRM. |
| 229+50 | 45" | 44' | 2.4 C.Y. | 14 C.Y. |
| 236+63 | 24" | 44' | - | 5.4 " |

191-L 1932 5 27

NOTE
THE ATTENTION OF THE ENGINEER IS CALLED TO THE FACT THAT AT THE TIME OF CONSTRUCTION CARE MUST BE TAKEN THAT THE SEWERAGE FROM THE PROPERTY OF V.E. DELWORTH IS PROPERLY PROVIDED FOR.

NOTE
THE WATER PIPES UNDER THE ROAD TO THE RESIDENCE OF MRS. NELLIE BROWN ARE TO BE PROTECTED AND MAINTAINED AS DIRECTED BY THE ENGINEER.



| PARCEL | INSTRUMENT | DATE | GRANTOR | GRANTEE | RECORDED | REMARKS |
|--------|------------|---------|-------------------|-------------|----------|----------------|
| A-B | O.C.O. | 6-27-32 | FRANK E. DELWORTH | 1700 ft. 76 | 12-7 | 8-15-32 230+30 |
| A-B-C | O.C.O. | 6-27-32 | NELLIE E. BROWN | " | 76 | 11-12 8-15-32 |

B.M. #26 Spike in Root 24" Twin Elm 70' At Sta. 233+00 El. 803.19
B.M. #27 " " " 24" Pine 35' Lt. Sta. 239+43 El. 798.10

SERIES F No. 191-L
SHEET 5 OF 27 SHEETS