

INDEX OF SHEETS

SHEET NO. 1	TITLE PAGE
" 2	TYPICAL CROSS-SECTION OF IMPROVEMENT <i>2 1/2" Crushed Stone Surface Course With Cut-Back Asphalt Binder</i>
" 3	BANKING AND WIDENING TABLES <i>17x15 2 1/4 x 2 1/4</i>
" 4-8	PLAN AND PROFILE SHEETS
" 9	STANDARD SHEET S-30; GUARD RAIL
" 10	" " " " S-40; BARRICADES, SIGNS & LIGHTS
" 11-23	CROSS-SECTIONS

Standard sheet S-30 approved by the Chief Engineer on Aug. 15, 1933.

FED. ROAD DIST. NO.	STATE	FED. AID PROJ. NO.	FISCAL YEAR	SERIAL SHEET NO.	TOTAL SHEETS
9	Vt.	131-E	1934	1	23

STATE OF VERMONT  
STATE HIGHWAY DEPARTMENT

PLAN AND PROFILE OF PROPOSED  
STATE HIGHWAY

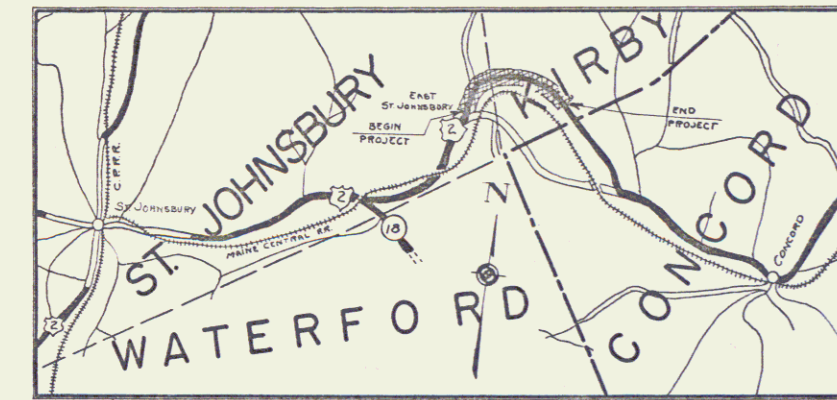
FEDERAL AID PROJECT

TOWNS OF ST. JOHNSBURY-KIRBY

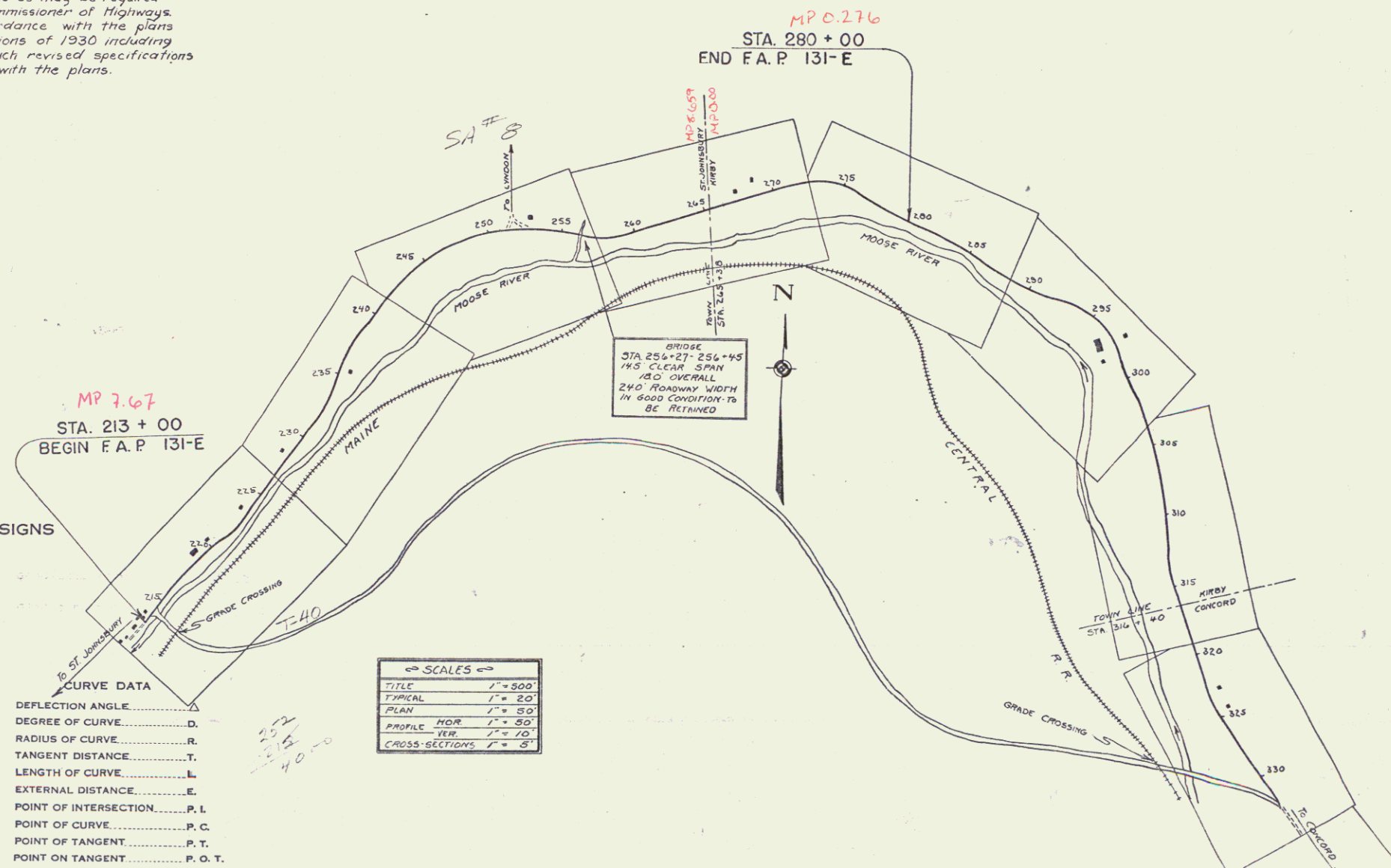
ST. JOHNSBURY, VT.-LANCASTER, N.H. ROAD  
FROM THE RESIDENCE OF DR. SIDNEY McCURDY, NORTHEASTERLY  
1.268 MILES, TO 1100± FT. EAST OF THE RESIDENCE OF CHARLES  
BIRCH.

LENGTH OF PROJECT 6699.1 FT. = 1.268 MILES

These plans are subject to such revisions as may be required by the Bureau of Public Roads and the Commissioner of Highways. Construction is to be carried on in accordance with the plans and Standard Road and Bridge Specifications of 1930 including all subsequent approved revisions, and such revised specifications and special provisions as are submitted with the plans.



Plan # 99R146



CONVENTIONAL SIGNS

COUNTY LINE	.....
STONE WALL	.....
UNFENCED PROPERTY	.....
GUARD RAIL	.....
PAVELED WAY	.....
RAILROAD	.....
RETAINING WALL	.....
CENTER LINE	.....
SURVEY LINE	.....
CULVERT	.....
DROP INLET	.....
TROLLEY POLE	.....
POWER POLE	.....
TELEPHONE POLE	.....
TREES	.....
HEDGE	.....

CURVE DATA

DEFLECTION ANGLE	.....
DEGREE OF CURVE	.....
RADIUS OF CURVE	.....
TANGENT DISTANCE	.....
LENGTH OF CURVE	.....
EXTERNAL DISTANCE	.....
POINT OF INTERSECTION	.....
POINT OF CURVE	.....
POINT OF TANGENT	.....
POINT ON TANGENT	.....

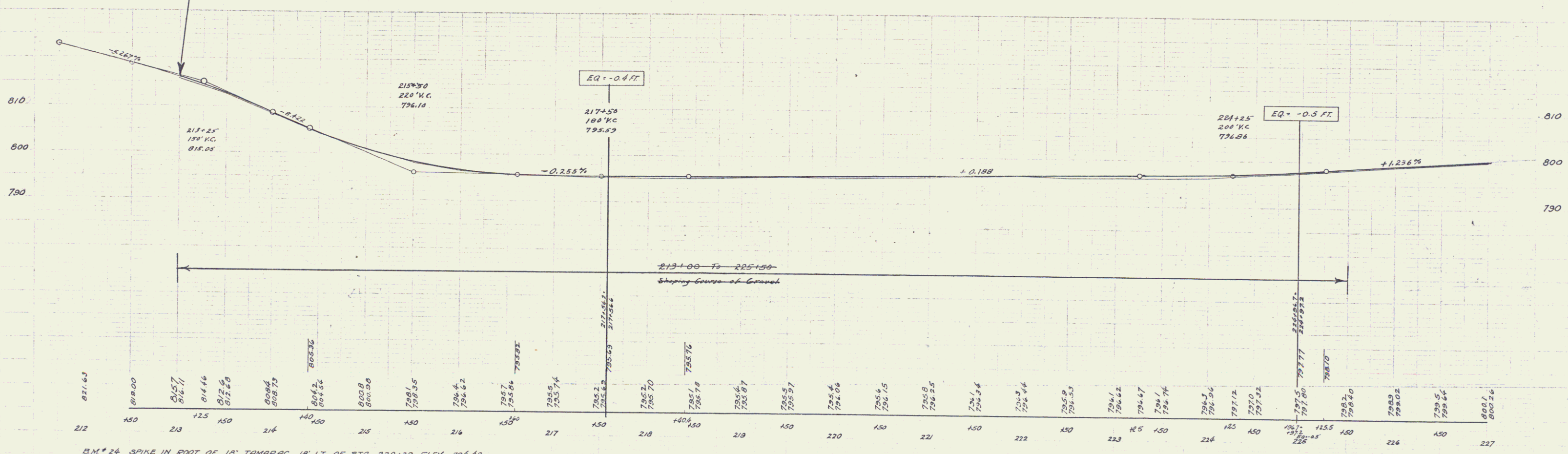
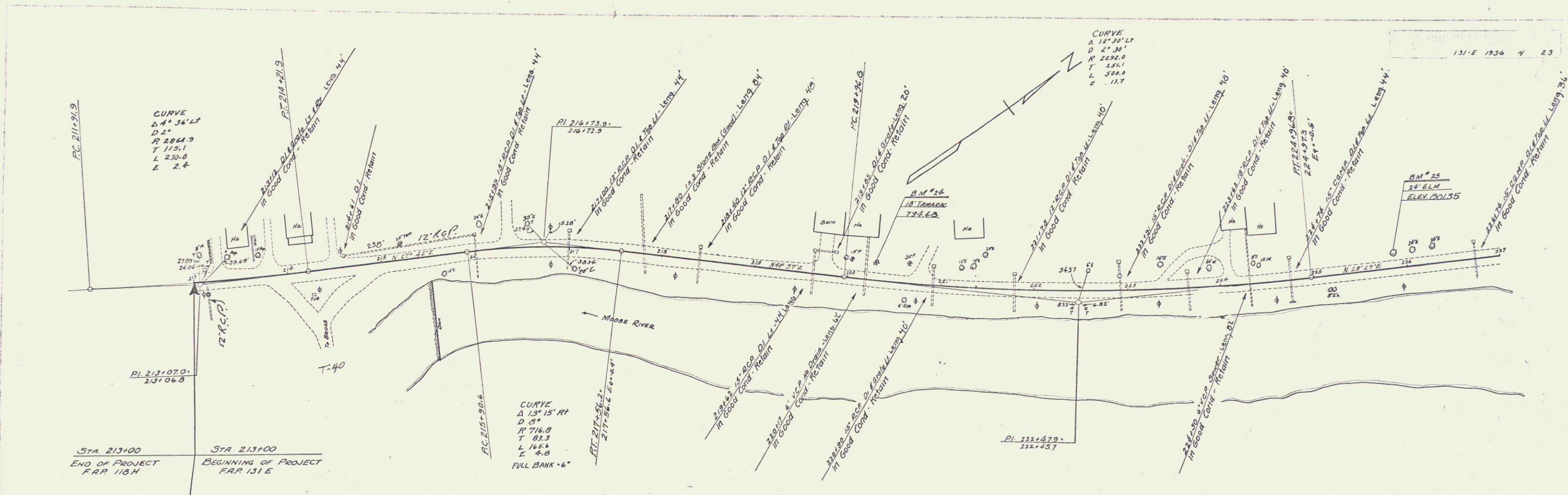
SCALES

TITLE	1" = 500'
TYPICAL	1" = 20'
PLAN	1" = 50'
PROFILE	1" = 10'
CROSS-SECTIONS	1" = 8'

RIGHT-OF-WAY DIVISION  
TOWN FILE  
PERPETUAL  
Town of U.S. 2  
(To Be Returned To R.O.W. Division)  
APPROVED: *May 29, 1935*  
*H. E. Stoughton*  
COMMISSIONER OF HIGHWAYS  
SUBMITTED BY ORDER OF THE STATE HIGHWAY BOARD

Project No. F.A.P. 131-E

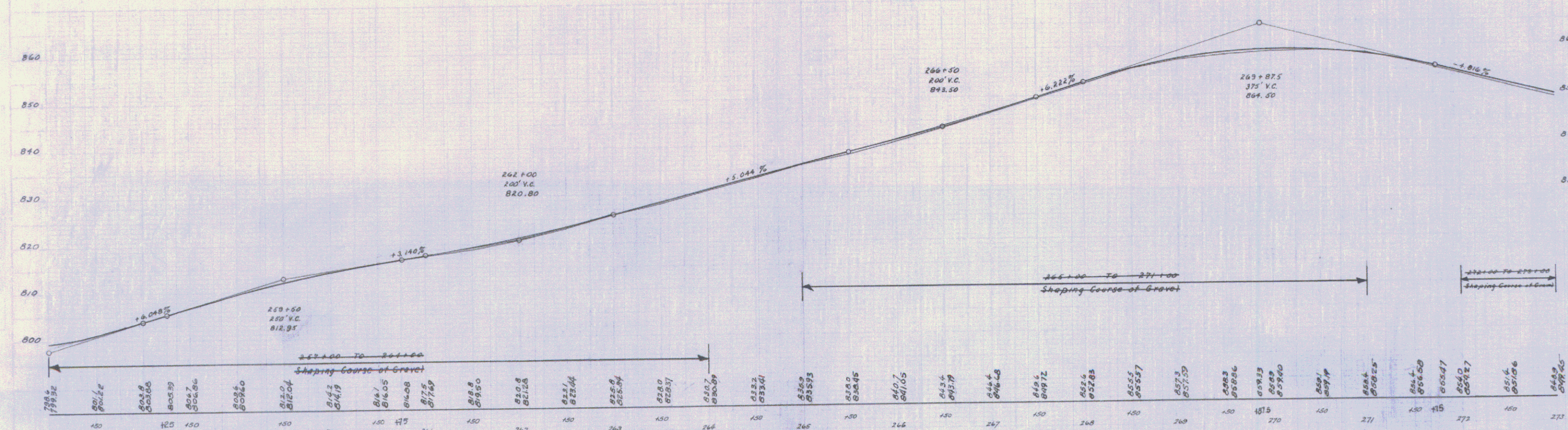
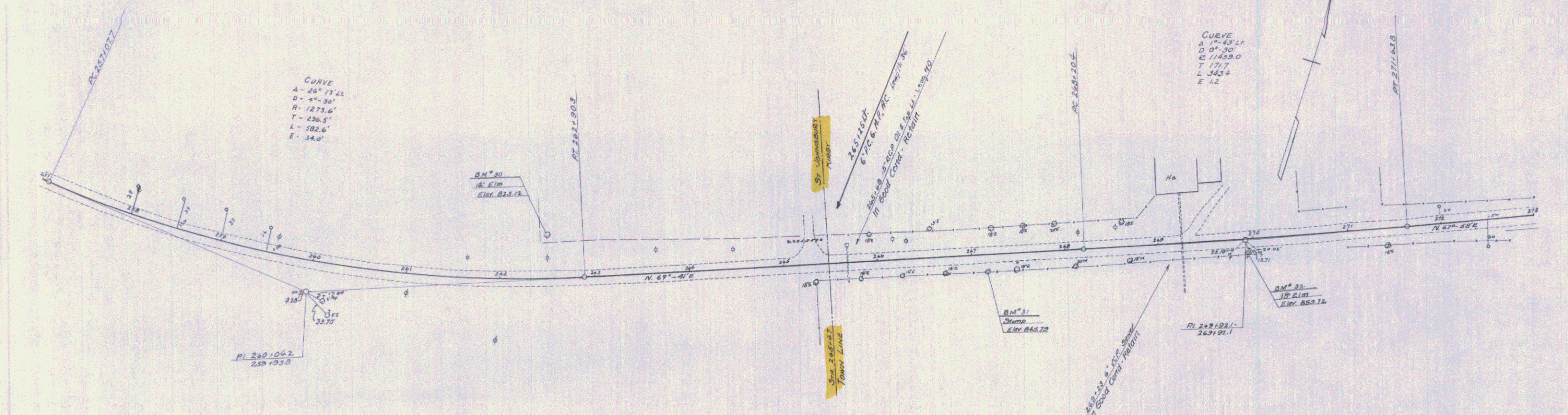
RECOMMENDED \_\_\_\_\_  
DISTRICT ENGINEER BUREAU OF PUBLIC ROADS  
RECOMMENDED FOR APPROVAL \_\_\_\_\_  
CHIEF ENGINEER BUREAU OF PUBLIC ROADS  
APPROVED \_\_\_\_\_  
DIRECTOR - BUREAU OF PUBLIC ROADS  
CORRECT: *May 29, 1935*  
*W. J. ...*  
ROAD ENGINEER  
SERIES F.A.P. NO. 131-E FILED  
SHEET 1 OF 23



B.M. 24 SPIKE IN ROOT OF 18' TAMARAC 18' LT OF STA 220+29 ELEV 794.48  
 B.M. 25 24' ELM 13.5' LT OF STA 225+87 ELEV 801.35



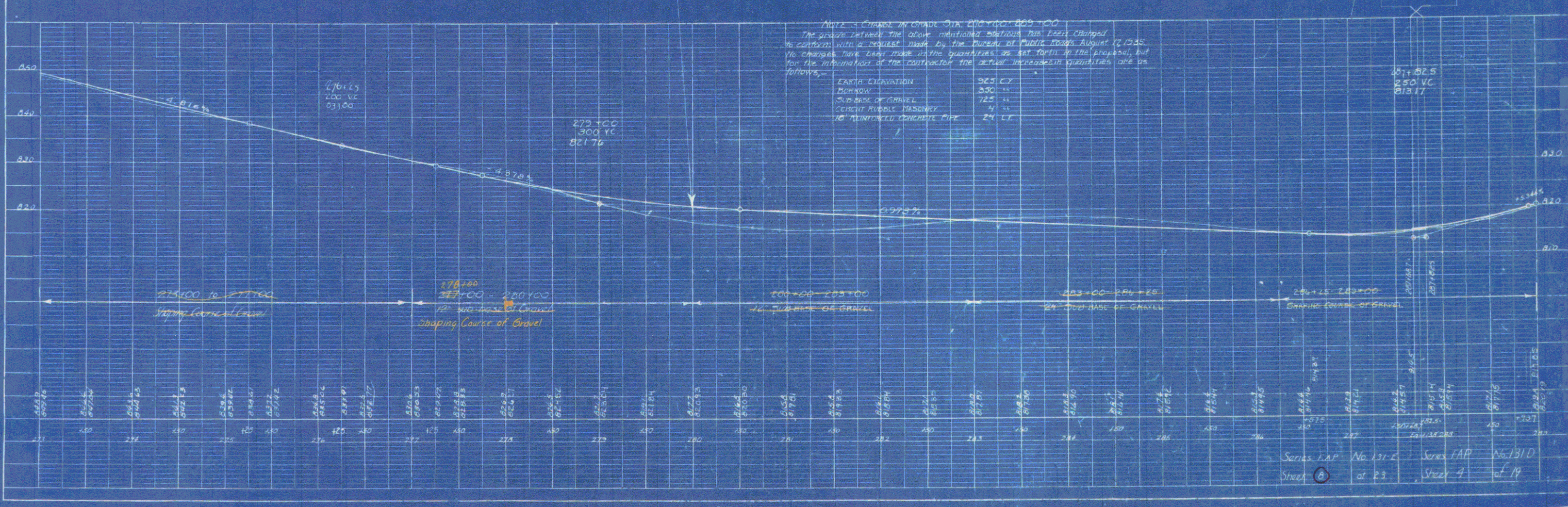
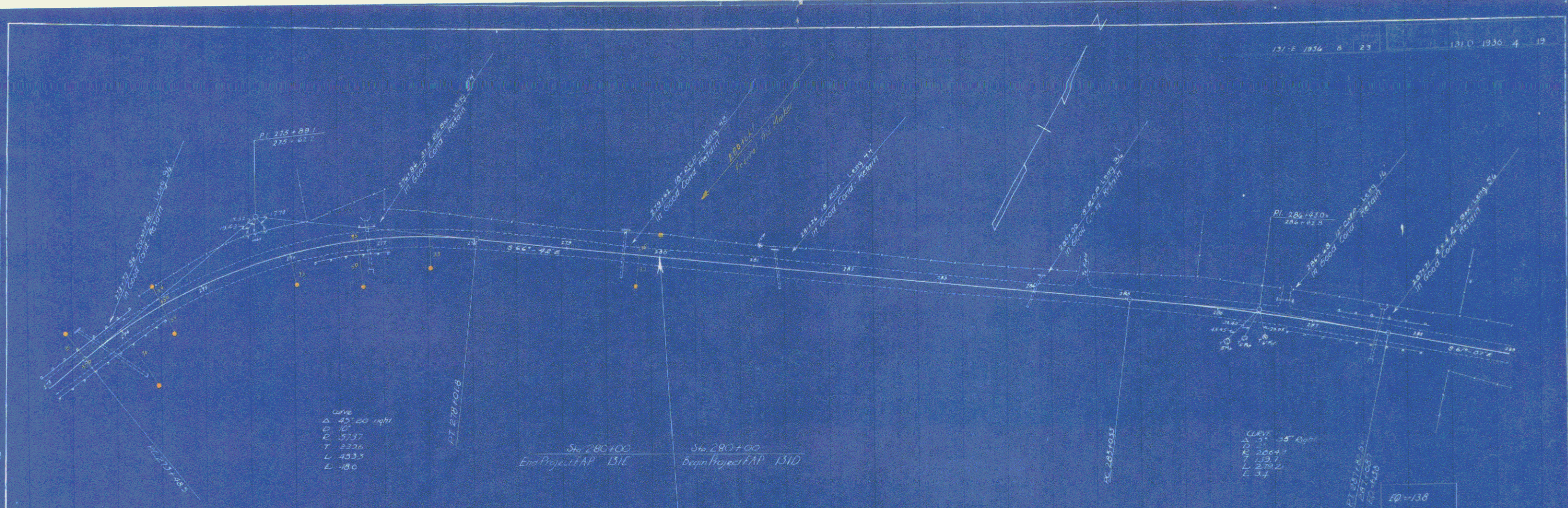




B.M. 30 SPIKE IN ROOT 14' ELM 45' LT OF STA 262+51 ELEV 825.12  
 B.M. 31 STUMP 17' ET OF STA 267+16 ELEV 845.79  
 B.M. 32 18' ELM 14' ET OF STA 269+92 ELEV 859.72

PLAN  
 LOCATION  
 SHEET NO. 19 OF 23 SHEETS  
 NO.

NOTE: BOOK OF RECORDS ON FILE IN THE OFFICE OF THE ENGINEER.  
 DATE



Series L.P. No. 131-E Street 0 of 23  
 Series P.P. No. 131-D Street 4 of 19