

MP 6.40-6.50
 RIGHT-OF-WAY DIVISION
 TOWN FILE
 PERPETUAL
 Town of Concord
 (To Be Returned To R.O.W. Division)

PC = 2193.4
 Δ 39° 04' R
 DT = 11° 30'
 L = 152.6'
 E = 17.5'

B.M. #1 NW cor of concrete base of pump stand
 opp Sta 0100 Elev. 100.0
 B.M. #2 Spike in R.R. King sign Lt. Sta 4+95
 Elev. 100.90

ELEV. MAXIMUM H.W. ----- 87.9
 ELEV. EXTREME L.W. ----- 76.3

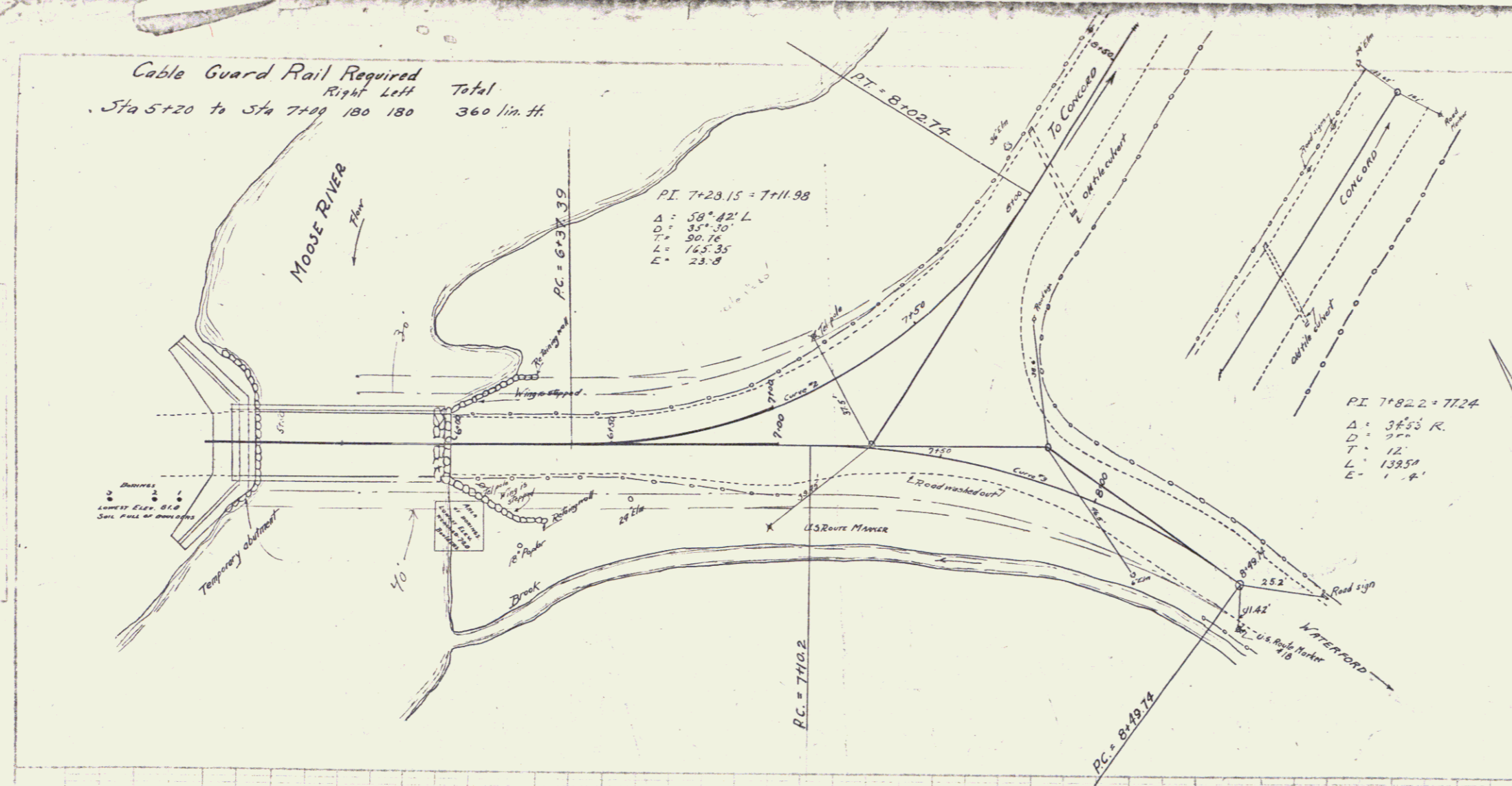
Correct: A. R. Bishop
 Bridge Engineer
 Approved: April 2 1929
 H. E. Sargent
 Chief Engineer

US RT 2
 project No. Bridge #7
 MP 6.40-6.50

WORK'S BRIDGE
 BRIDGE #7 OVER MOOSE RIVER
 DISTRICT No. 10
 TOWN OF ST. JOHNSBURY
 Scale - (Hor. 1" = 20'
 Vert. 1" = 20')

SHEET No. 1 of 12 SHEETS
 DIST. # 7 PLANS

Cable Guard Rail Required
 Right Left Total
 Sta 5+20 to Sta 7+00 180 180 360 lin. ft.

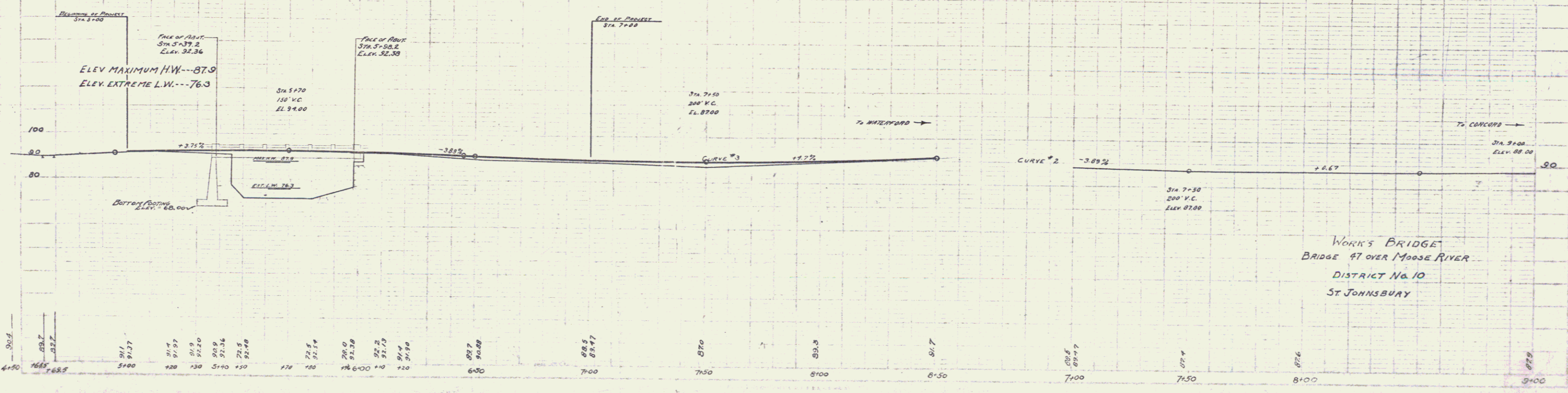


INDEX OF SHEETS TO BE USED

SHEETS No. 1-2	PLAN AND PROFILE
SHEET - 3	TYPICAL SECTION - 24' GRAVEL SURFACE COURSE
- 4	S.A.R. No. 18' SQUARE
- 5	ABUTMENT No. 2
- 6	S.I.B. 20 - No. 60 1/2 GRAVEL
- 7	S.B. No. 3 - CABLE GUARD RAIL
- 8	S.B. No. 2 - TYPICAL DETAILS
- 9	S.B. No. 2A - TYPICAL DETAILS
- 10-11	CROSS SECTIONS
- 12	S.22 - STANDARD STRUCTURES
	EARTHWORK SHEET

ESTIMATED SUMMARY OF QUANTITIES.

ITEM No. 10	COMMON EXCAVATION INCLUDING BORROW	167 Cu. Yds.
- 15	STRUCTURE EXCAVATION	670 - -
- 20	GRAVEL SURFACE COURSE	94 - -
- 39A	CONCRETE CLASS A (1:2:4)	194 - -
- 39C	- C (1:2:4)	213.8 - -
- 35	REINFORCING STEEL	22970 Lbs.
- 36	STRUCTURAL STEEL (5-5' 7.5' 16s.)	1 LUMP SUM
- 45	REPOINTING MASONRY	1350 Yds.
- 55	TEMPORARY BRIDGE AND MAINTAINING TRAFFIC	1 LUMP SUM
- 67	CABLE GUARD RAIL	360 Lin. Ft.



WORK'S BRIDGE
 BRIDGE 47 OVER MOOSE RIVER
 DISTRICT No. 10
 ST. JOHNSBURY