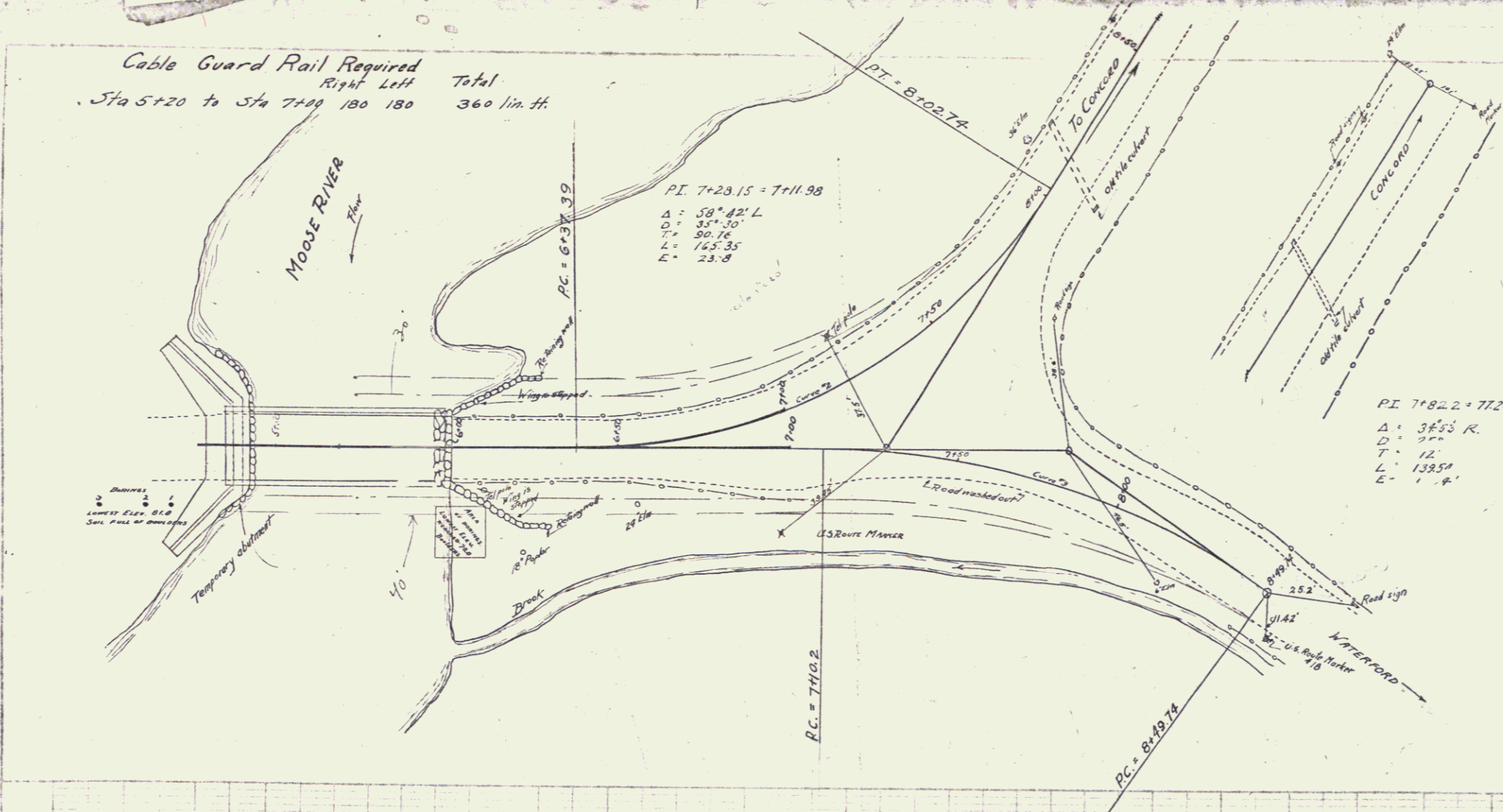


Cable Guard Rail Required  
 Right Left Total  
 Sta 5+20 to Sta 7+00 180 180 360 lin. ft.

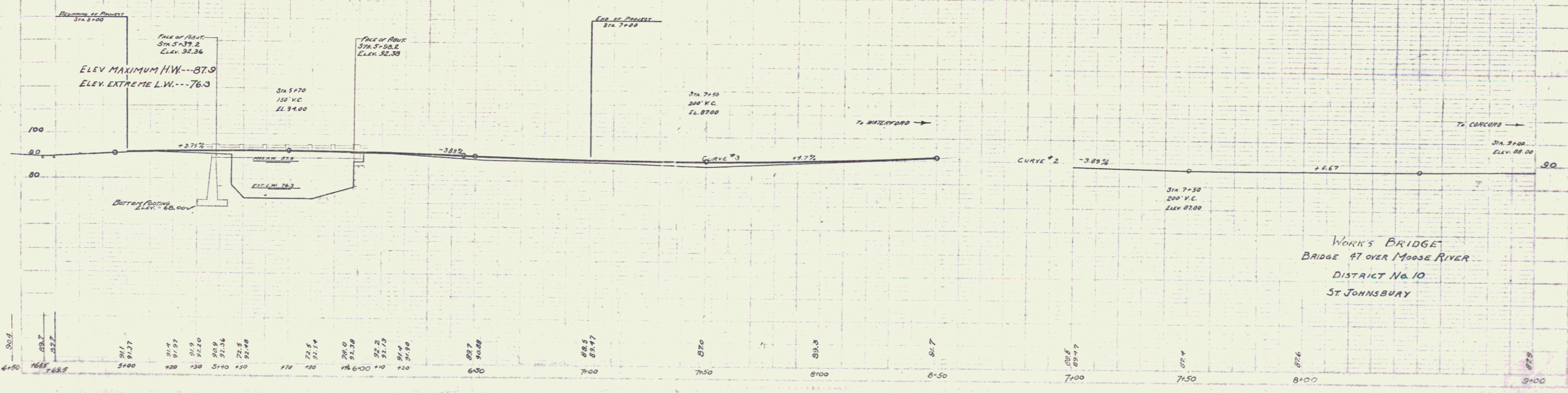


INDEX OF SHEETS TO BE USED

SHEETS No. 1-2	PLAN AND PROFILE
SHEET - 3	TYPICAL SECTION - 24' GRAVEL SURFACE COURSE
- 4	S.A.R. No. 18' SQUARE
- 5	ABUTMENT No. 2
- 6	S.I.B. 20 - No. 60 1/2 GRAVEL
- 7	S.B. No. 3 - CABLE GUARD RAIL
- 8	S.B. No. 2 - TYPICAL DETAILS
- 9	S.B. No. 2A - TYPICAL DETAILS
- 10-11	CROSS SECTIONS
- 12	S.22 - STANDARD STRUCTURES
	EARTHWORK SHEET

ESTIMATED SUMMARY OF QUANTITIES.

ITEM No. 10	COMMON EXCAVATION INCLUDING BORROW	167 Cu. Yds.
- 15	STRUCTURE EXCAVATION	670 - "
- 20	GRAVEL SURFACE COURSE	94 - "
- 39A	CONCRETE CLASS A (1:2:4)	194 - "
- 39C	" " C (1:2:4)	213.8 - "
- 35	REINFORCING STEEL	22970 Lbs.
- 36	STRUCTURAL STEEL (5-597.5 lbs.)	1 LUMP SUM
- 45	REPOINTING MASONRY	1350 Yds.
- 55	TEMPORARY BRIDGE AND MAINTAINING TRAFFIC	1 LUMP SUM
- 67	CABLE GUARD RAIL	360 Lin. Ft.



WORK'S BRIDGE  
 BRIDGE 47 OVER MOOSE RIVER  
 DISTRICT No. 10  
 ST. JOHNSBURY