

INDEX OF SHEETS

SHEET NO. 1	TITLE PAGE
" 2	PLAN AND PROFILE OF IMPROVEMENT
" 3	STD. AUTO. HIGHWAY CROSSING SIGNAL-K7 (MODIFIED FOR 1 TRACK WITHOUT BELL)
" 4	PLAN-CIRCUITS FOR AUTO. HIGHWAY CROSSING PROTECTION, GRISWOLD, VT. FFM-4

FED. ROAD DIST. NO.	STATE	PROJECT NO.	SHEET NO.
9	VT.	177	1

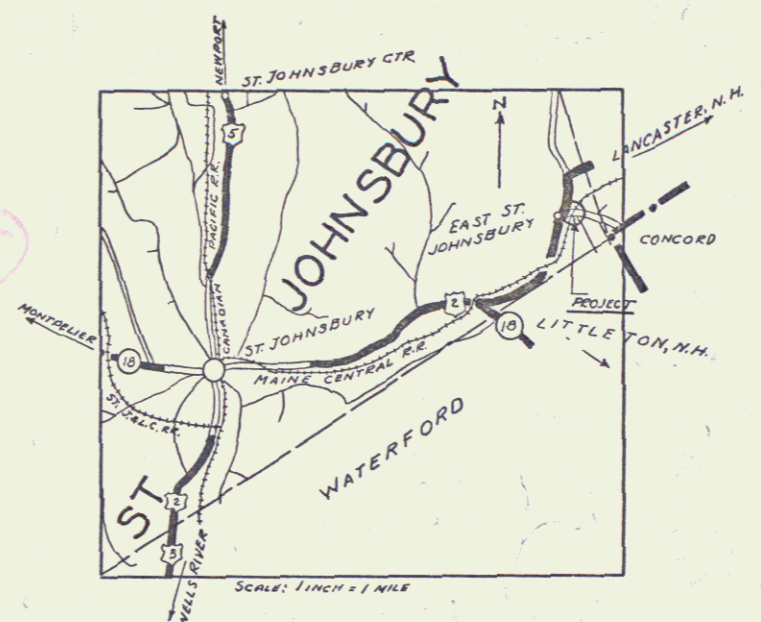
STATE OF VERMONT
STATE HIGHWAY DEPARTMENT

PLAN AND PROFILE OF PROPOSED
STATE HIGHWAY
U.S. WORKS PROGRAM GRADE CROSSING PROJECT

Pin# 99R143

TOWN OF ST. JOHNSBURY

AUTOMATIC FLASH SIGNALS ON DEPOT ROAD
SOUTHEASTERLY FROM JUNCTION OF ROUTE
U.S. 2 CROSSING MAINE CENTRAL RAILROAD
IN THE VILLAGE OF EAST ST. JOHNSBURY
AND KNOWN AS DEPOT CROSSING.



LENGTH OF PROJECT 40.0 FEET = 0.007 MILES

APPROVED: *[Signature]*
DISTRICT ENGINEER
MAINE CENTRAL RAILROAD COMPANY

RIGHT-OF-WAY DIVISION
TOWN FILE
PERPETUAL
Town of St. Johnsbury U.S. 2
(To Be Returned To R.O.W. Division)

THESE PLANS ARE SUBJECT TO SUCH REVISIONS AS MAY BE REQUIRED BY THE BUREAU OF PUBLIC ROADS AND COMMISSIONER OF HIGHWAYS. CONSTRUCTION IS TO BE CARRIED ON IN ACCORDANCE WITH THE PLANS AND SPECIFICATIONS OF THE ASSOCIATION OF AMERICAN RAILROADS, WHICH APPLY TO THIS WORK.

CONVENTIONAL SIGNS

COUNTY LINE	GROUND ELEVATION..... DATUM	LINE
TOWN LINE	SHAPE ELEVATION..... DATUM	LINE
FENCE LINE		
STONE WALL		
UNFENCED PROPERTY		
GUARD RAIL		
TRAVELED WAY		
RAILROAD		
RETAINING WALL		
CENTER LINE		
SURVEY LINE		
CULVERT		
DROP INLET		
TROLLEY POLE		
POWER POLE		
TELEPHONE POLE		
TREES		
HEDGE		

CURVE DATA

DEFLECTION ANGLE..... Δ
DEGREE OF CURVE..... D
RADIUS OF CURVE..... R
TANGENT DISTANCE..... T
LENGTH OF CURVE..... L
CHORDAL DISTANCE..... C
POINT OF INTERSECTION..... P. I.
POINT OF CURVE..... P. C.
POINT OF TANGENT..... P. T.
STATION TANGENT..... P. O. T.

SCALES

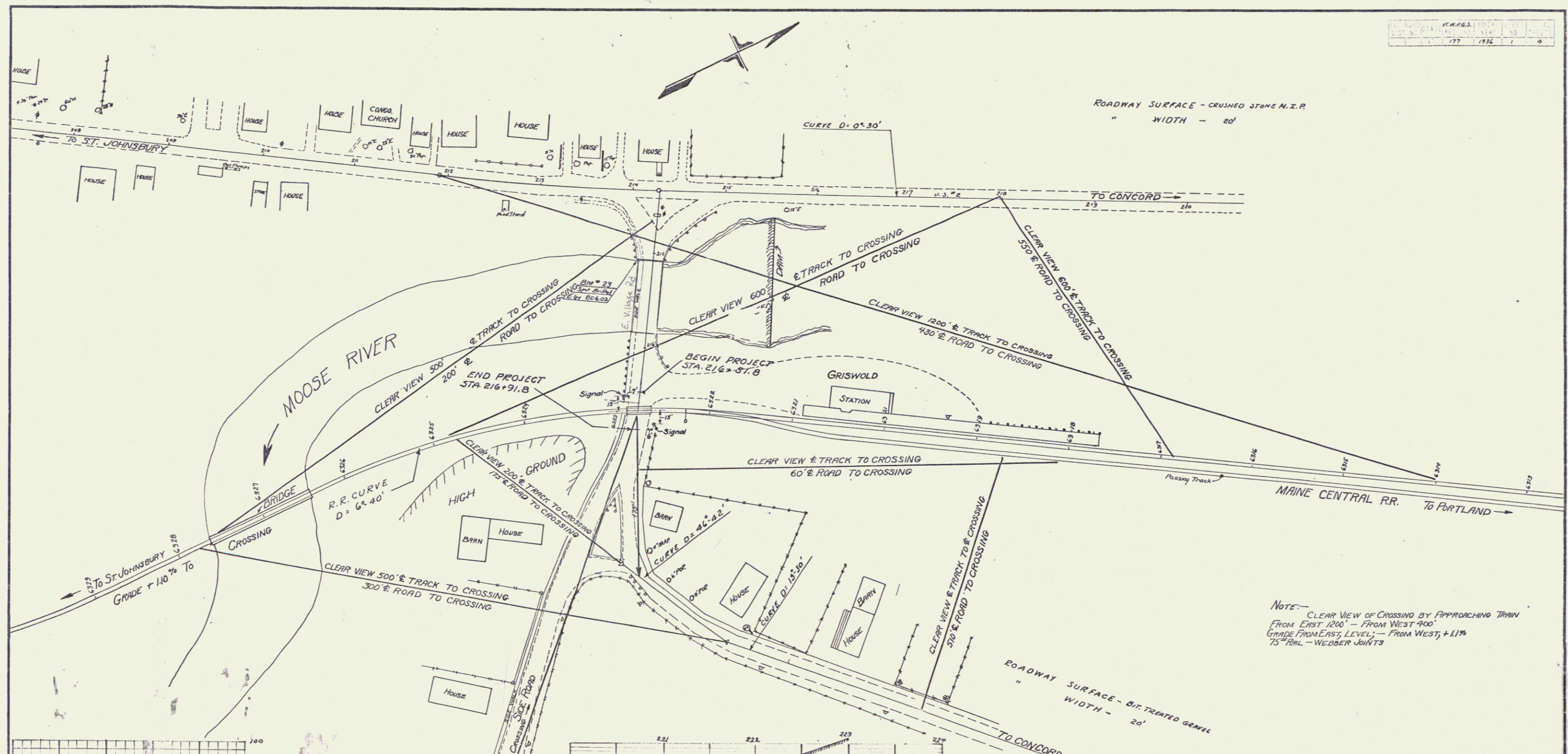
PLAN	1" = 50 FEET
PROFILE	HORL. 1" = 50' "
	VERT. 1" = 10' "

Project No. W.P.G.S. 177

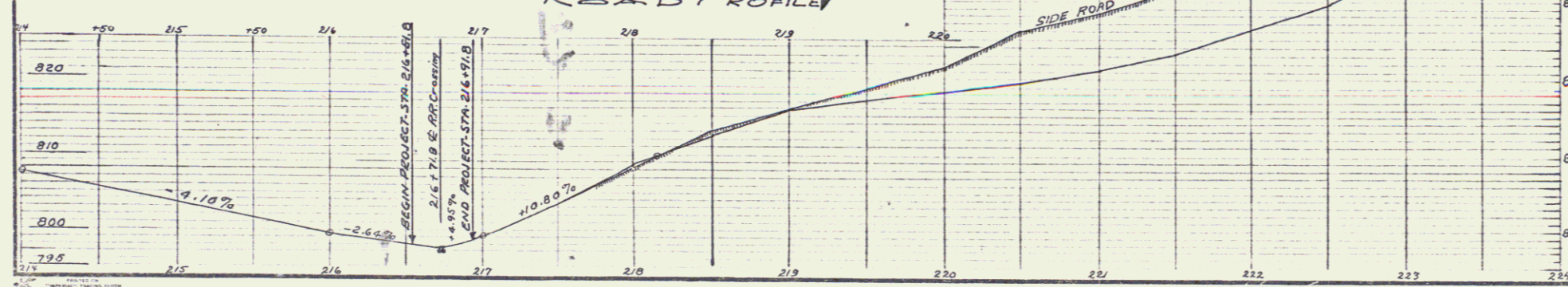
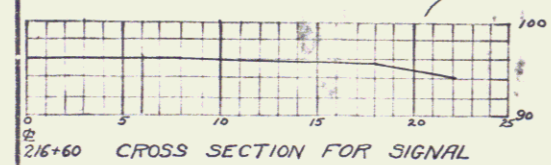
RECOMMENDED *[Signature]*
DISTRICT ENGINEER BUREAU OF PUBLIC ROADS

RECOMMENDED FOR APPROVAL *[Signature]*
CHIEF ENGINEER BUREAU OF PUBLIC ROADS

APPROVED *[Signature]*
DIRECTOR - BUREAU OF PUBLIC ROADS



NOTE: - CLEAR VIEW OF CROSSING BY APPROACHING TRAIN
 FROM EAST 1200' - FROM WEST 900'
 GRADE FROM EAST LEVEL - FROM WEST + 11%
 75' PAUL - WEBBER JOINTS



AUTOMATIC FLASH SIGNAL
 GRADE CROSSING
 OVER
 MAINE CENTRAL RAILROAD
 VT. W.P.G.S. - 177 EAST ST. JOHNSBURY
 Scale 1"=50'

ESTIMATED QUANTITIES	
REQUIRED - 2 - SIGNALS WITH MENS	

Surveyed by Hobson
 Designed by H.M.H.
 Drawn by R.W.H.
 Checked by Series W.P.G.S. No. 177
 Filed
 Sheet 2 of 4 Sheets