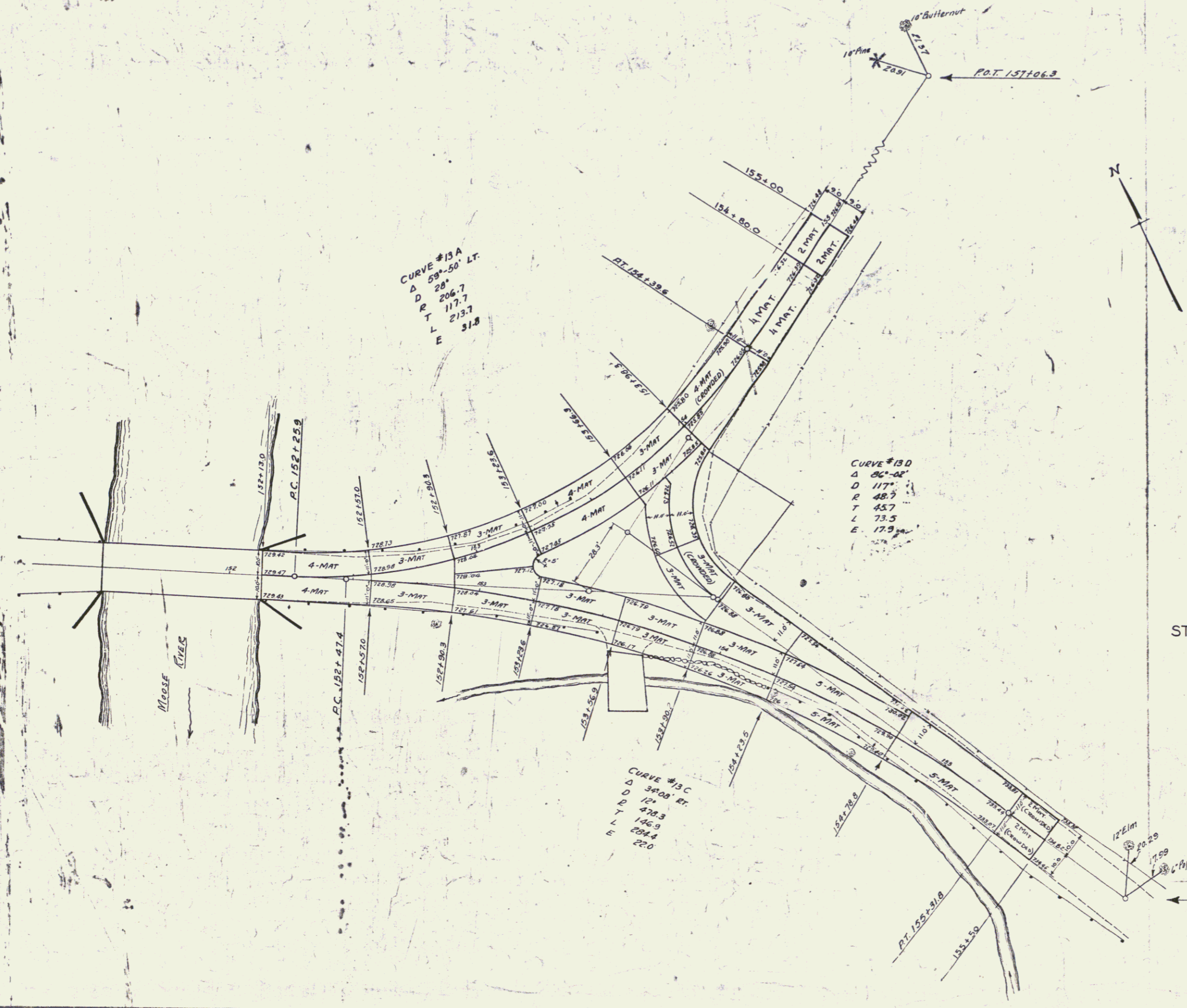


FED. ROAD DIST. NO.	STATE	N. 1/4	PL. ROAD YEAR	SHEET NO.
9	VT.	118C	1931	11
(1935)				
FED. ROAD DIST. NO.	STATE	N. 1/4	PL. ROAD YEAR	SHEET NO.
9	VT.	118C	1936	11



PROPOSED SLAB LAYOUT
 AT INTERSECTION STA 154± OF
 ST. JOHNSBURY ROAD PROJECT 118C
 SCALE 1"=20'

Grades as given on slab layout are top of slab. Sub-base grades are to be 7" or 0.58 Ft lower.

Series 118C No. 118C
 Sheet 11 of 13

Surveyed by A.A. Doe
 Designed by
 Drawn by
 Traced by
 Checked by
 Series NR 118C No. 118C
 Sheet 11 of 13