



STATE OF VERMONT  
DEPARTMENT OF HIGHWAYS  
RIGHT-OF-WAY PLANS  
ALPHABETICAL INDEX

GRANTOR	SHEET NO.	PARCEL NO.
<b>A</b> AMERICAN OIL CO. (LESSEE)	14	17
<b>B</b> BRYER, BETTY M.	11	2
<b>C</b> CABOT FARMERS CO-OP CREAMERY CO., INC. CALKINS, PAUL, ROY & LELAND	14 13, 14, 15	14 13
CENTRAL VERMONT PUBLIC SERVICE CORP. CHAFFMAN, NELSON D. & MARY W. CRAY, PAUL S. COLT INDUSTRIES OPERATING CORP.	12 11 12, 13	20 8 3 10
<b>D</b>		
<b>E</b>		

GRANTOR	SHEET NO.	PARCEL NO.
<b>F</b> FURSE, HERBERT W. & MARY E.	12	6
<b>G</b> GAS CO. OF VERMONT GOSS, C. H. CO.	11, 12	24 4
<b>H</b> HIGH, EHYL M. HIGH, EDYTHE E. HIGH, RUTH H.	12 12 12	5 5 5
<b>I-J-K</b>		
<b>L</b> LAGUE, JOHN L. (LESSOR) LEGENDE, ROGER E. & JOAN H.	14 13	17 12

GRANTOR	SHEET NO.	PARCEL NO.
<b>M</b> MCDONALD, MAMIE E. MENUT & PARKS INC. (W/O LESSOR) MURPHY REALTY CO. INC.	11 13, 14 11, 12	2 17 19
<b>N-O</b> NEW ENGLAND TELEPHONE & TELEGRAPH CO. OLIVER, EVELYN	13 13	21 11
<b>P</b> PERRIGARD, THEODORE G. PERRIGARD, W. PAUL	12 12	9 9
<b>Q-R</b> RODD, CARMEN	13, 14, 15	13
<b>S</b> ST. JOHNSBURY COMMUNITY TELEVISION CORP. SEVIGNY, MARION	23 13, 14, 15	13 13
<b>T</b> TAURIAINEN, ZANA TENNEY, WARREN H. & BEVERLY T.	13, 14, 15 12, 13	13 18
TOWN OF ST. JOHNSBURY	11, 12 13, 14, 1 & 22	

GRANTOR	SHEET NO.	PARCEL NO.
<b>U-V</b> VERMONT, STATE OF	14	15 & 16
<b>W</b> WOODS, ALMIRA L. WILLEY, BETTY W.	13 12	11 7
<b>X-Y-Z</b>		

GRANTOR	SHEET NO.	PARCEL NO.

MADE BY: CRG DATE: 2-13-67  
CHECKED BY: WGS DATE: 2-22-67

PROJECT: ST. JOHNSBURY  
NO: F 028-4(2)  
SHEET: (5) OF 9

STATE OF VERMONT  
DEPARTMENT OF HIGHWAYS  
RIGHT-OF-WAY PLANS  
DETAIL SHEET  
OF

TABLE OF PROJECT PROPERTY ACQUISITION

PARCEL NO.	GRANTOR	SHEET NO.	BEGINNING STATION	ENDING STATION	TAKING	REM	RIGHTS	TITLE TAKEN	DATE	TOWN OR CITY RECORDED	BK.	PG.	REMARKS
1A	TOWN OF ST. JOHNSBURY	11, 12, 13, 14	RTE 2 RELOC 10+16	RTE 2 RELOC 107+21	17A±		ALL R.T. & I.	Cond	7-16-73	St. Johnsbury	146	474 439	HIGHWAY EASEMENT WESTERN AVE
B		14	RTE 2 RELOC 7+34 LT	RTE 2 RELOC 8+50 LT	0.10A±								ORCHARD ST. NON LIMITED ACCESS
C		12	RTE 2 RELOC 101+34 LT	CENTRAL ST 4+00	0.35A±		ALL R.T. & I.						HIGHWAY EASEMENT CENTRAL ST.
D		14	RTE 2 RELOC 8+35 RT	RTE 2 RELOC 12+05 LT	0.26A±		ALL R.T. & I.						HIGHWAY EASEMENT S.A-3 NO. DANVILLE RD.
		11	RTE 2 RELOC 106+75 RT	RTE 2 RELOC 107+20 RT			SLOPE (T) 1015°±						TOTAL AREA 14.0 A±
				TOTAL	2.41A±								
2	MCDONALD, MAMIE E. & BRYEE, BETTY M.	11	104+70	106+35	3625°±		ALL R.T. & I.	WD	2-8-73	St. Johnsbury	145	516	HIGHWAY EASEMENT
			104+67 LT	105+00 LT			SLOPE (T) 225°±						
			104+95 LT				DRIVE (T)						
			104+70 LT	106+09 LT	0.2A±								
				TOTAL	3625°±	0.2A±							
3A	GRAY, PAUL S.	11	104+21	106+75	0.1A±		ALL R.T. & I.	Cond	7-16-73	St. Johnsbury	146	474 489	Highway Easement
B			104+19	106+75	3050°±		SLOPE (T) 2400°±						
			104+18 RT	106+75 RT			DRIVE (T)						
			105+38 RT										
			104+19 RT	106+75 RT	0.6A±								
				TOTAL	0.21A±	0.6A±							
4A	CH. GOSS CO.	11	102+13	104+81	0.15A±		ALL R.T. & I.	WD	8-2-75	St. Johnsbury	146	598 599	Highway Easement & Underground Storage Tanks
B			102+13	104+70	0.11A±								
			102+40 LT				EASEMENT TO REMOVE FUEL TANKS						CONCRETE BASE
			102+13 LT	104+70 LT	0.9A±		EASEMENT TO REMOVE PUMPS						
			102+85 LT	103+10 LT									
			102+13 LT										SIGN CONC. BASE
			102+16 LT										CONC. BASE
			104+25 LT										
			102+95 LT	103+90 LT			SLOPE (T) 105°±						
			104+10 LT	104+68 LT			SLOPE (T) 325°±						
			102+13 LT	102+26 LT			SLOPE (T) 24°±						
				TOTAL	0.26A±	0.90A±							

TABLE OF REVISIONS

REVISION NO.	SHEET NO.	DESCRIPTION OF REVISION	DATE	MADE BY	APPROVED BY
1	14, 13, 14, 13	Revisions Due To Errors Found On Review Of Plans Per C.O. #2241	3-16-72	HP	T.P.M.
2	9	Parcel #19 Revised Total Take From 3.11 To 3.66-12 Per C.O. #2284	4-24-72	WMD	T.P.M.
3	9, 12	Parcel #19 Murphy Realty Add Drives (T) @ 0+98 Rt. & 3+45 Rt. Per Change Order #2375	7-19-72	DJB	T.P.M.
4	5, 0	Parcel #18 Change In Title From HARRIS & HARRIS & HARRIS To Alice J. Harris. Per C.O. #2510	11-16-72	KD	T.P.M.
5	5, 8, 12, 13	Parcel #18 Change In Ownership From Ellis To TENNEY Per C.O. #2515	11-16-72	KD	T.P.M.
6	13, 0, 16	Parcel #18 Revised Pl. And Increased Take & Per. Parcel 13A & 13B Take Was Reduced. Reduced Chans. Per. On 191-3 (18) Sec. I Per C.O. #2519 (Parcel #60)	11-20-72	KD	T.P.M.
7	13, 14, 15, 0, 4	Parcel #19C Calkins Revised Take Line #2566 Per Change Order #2566	11-31-72	KD	T.P.M.
8	5, 0	Parcel #17 Added Menute Parks Inc. (Sub. Lessee) To Plans. Per C.O. #2575	2-6-73	KD	T.P.M.
9	13, 14, 15, 0, 6, 15	Parcel #18 Calkins Added 1/2" for Future T.P. Pl. Between 1+21 Rt. and Close to 1+02 between Sta. 101-61 to 1+00 Per C.O. #2567	2-14-73	KD	T.P.M.
10	6, 11	Parcel #18 Goss Co. & GIFFORD Corp. Revised Curb and Construction Limits Between Sta. 102+00 & 103+00	2-15-73	KD	T.P.M.
11	9, 12	Parcel #19 Drive changed from 101+55 Rt. to 101+35 Rt. Per Change Order #2597	3-19-73	C	T.P.M.
12	7, 12, 13, 16	Parcel #10 Revise Take Line As Proposed Per Change Order #2595 11/16/72 Approved 8-2-73	5-23-73	WES	T.P.M.

MADE BY: WJM DATE 3-10-69  
CHECKED BY: [Signature] DATE 2-22-73

LEGEND

----- PRESENT R.O.W.

--- TAKING WITHOUT ACCESS

--- TAKING WITHOUT ACCESS ALONG PROPERTY LINES

--- TAKING WITH ACCESS

(P) PERMANENT EASEMENT

(T) TEMPORARY EASEMENT

SR SR SLOPE RIGHTS

--- PROPERTY LINE

--- TOP OF CUT

--- TOE OF SLOPE

APPROVED: [Signature] DATE 2-27-73 CHIEF OF ACQUISITION

APPROVED: [Signature] DATE [ ] HIGHWAY ENGINEER

APPROVED: [Signature] DATE 2-27-73 NEW DIRECTOR

PROJECT ST. JOHNSBURY  
NO. F028-4(3)  
SHEET 6 OF 19

STATE OF VERMONT  
DEPARTMENT OF HIGHWAYS  
RIGHT-OF-WAY PLANS  
DETAIL SHEET  
OF

TABLE OF PROJECT PROPERTY ACQUISITION

PARCEL NO.	GRANTOR	SHEET NO.	BEGINNING STATION	ENDING STATION	TAKING	REM.	RIGHTS	TITLE TAKEN	DATE	TOWN OR CITY RECORDED	BK.	PG.	REMARKS
5	HIGH, ETHEL M., EDYTHE E., & RUTH H.	12	CENTRAL ST 3+50	CENTRAL ST 4+00	860 <sup>0±</sup>		ALL RT & I.	WD	2-23-73	St. Johnsbury	145	67-73	HIGHWAY EASEMENT
			3+50 RT 3+50 RT 4+00 RT TOTAL	3+74 RT 4+00 RT TOTAL	0.3 A± 0.3 A±	SLOPE (T) 100 <sup>0±</sup>							
6	FURSE, HERBERT W. & MARY E.	12	CENTRAL ST 3+44	CENTRAL ST 4+00	960 <sup>0±</sup>		ALL RT & I.	WD	4-26-73	St. Johnsbury	145	459-460	HIGHWAY EASEMENT
			3+43 LT 3+44 LT TOTAL	3+74 LT 4+00 LT TOTAL	0.4 A± 0.4 A±	SLOPE (T) 75 <sup>0±</sup>							
7	WILLEY, BETTY W.	12	CENTRAL ST 2+69	CENTRAL ST 3+45	1285 <sup>0±</sup>		ALL RT & I.	WD	3-21-73	St. Johnsbury	145	232-233	HIGHWAY EASEMENT
			2+69 LT 2+90 LT 3+04 LT 2+69 LT	3+44 LT 3+20 LT TOTAL	0.2 A± 0.2 A±	SLOPE (T) 150 <sup>0±</sup> CULVERT (P) DRIVE (T)							
8A	CHAPMAN, NELSON D. & MARION W.	12	CENTRAL ST 1+18 RT	CENTRAL ST 2+69 LT	0.14 A±		ALL RT & I.	Cond	7-16-73	St. Johnsbury	145	474-479	HIGHWAY EASEMENT
			1+08 RT 1+77 LT 1+52 LT	2+69 LT 2+69 LT TOTAL	0.2 A± 0.60 A±	SLOPE (T) 0.2 A±							
9A	PERRIGARD, THEODORE G. & W. PAUL	12	98+87	CENTRAL ST 1+18	0.29 A±	NONE	ALL RT & I.	WD	5-3-72	St. Johnsbury	142	516-518	HIGHWAY EASEMENT
			98+79	100+70	0.15 A±	NONE	FOUNDATION GAS STATION						
10A	COLT INDUSTRIES OPERATING CORPORATION	12, 13	94+49	99+96	0.34 A±		SLOPE (P) 0.19 A± CONST. EASE (T) 0.37 A± CULVERT (P) DRAINAGE DITCH (P) CULVERT (P)	Cond	7-16-73	St. Johnsbury	145	474-489	SEE ST. J. LYNDON I 91-31(13) FOR REMAINDER 37
			94+50 RT 95+00 RT 94+51 RT 99+98 RT 96+50 RT	99+96 RT 99+96 RT TOTAL									
B		12, 13	94+49	100+45	0.34 A±		ALL RT & I.						SHED
C		13	93+58	94+49	0.14 A±		SLOPE (P) (2,544 SF.) EASE. TO FILL RIVER BED (T) (1,098 SF.) CONST. EASE (T) (2,522 SF.)						LIMITED ACCESS
			93+61 RT 93+88 RT 93+61 RT	94+50 RT 94+36 RT 94+36 RT									
D		13	93+55	94+49	0.05 A±								
				TOTAL	1.37 A±								
11	WOODS, ALMIRA L. OLIVER, EVELYN M.	13	96+16	97+12	2,180 SF.		ALL RT & I.	Cond	7-16-73	St. Johnsbury	145	474-489	HIGHWAY EASEMENT
			96+16 97+18 LT	97+12 TOTAL	0.26 A± 0.26 A±	DRIVE (T)							

TABLE OF REVISIONS

REVISION NO.	SHEET NO.	DESCRIPTION OF REVISION	DATE	MADE BY	APPROVED BY
13	5, 7, 13, 13	Parcel #10 Change Title From Fairbanks Morse Inc. To Colt Industries Operating Corporation Per C.O. # 2643	5-18-73	IFP	J.P.M.
14	5, 8, 13, 14, A	Parcel #13 Change In Title From Alice G. Collins To Paul, Roy & Leonard Colkins, Springy Mountain, Robt. Carmen and Tourianen, Zana Per C.O. # 2656	6/11/73	KD	
15	12	Parcel #19 Relocate Inlet & Drainage Pipes H- Sta 0+48 RT. Per Change Order # 2660	6-12-73	TR	
16	5, 6, 11	Parcel #4 Change In Title From C.H. Goss Co. Lessor, Gulf Oil Corp. Lessee To C.H. Goss Co. Per Change Order # 2665	6-28-73	RD	J.P.M.
17	8	Parcel #13B Changed ending sta. from 95+35 to 94+34 LT Per Change Order # 2707	10-29-73	Rad 5	J.P.M.
18	9	Parcel #19 Murphy Change Drives At 0+28 RT 3+43 from Left To Right Per Change Order # 2712	10-31-73	RSB	J.P.M.
19	1, 11, 13, 14	CORRECTED RELINQUISHMENT NUMBERING AND CHANGED BASEMENTS TO MAINT. AGREE. AREAS PER C.O. # 4416	6-15-74	NBB	J.P.M.
20	11, 13, 14	DELETE RELINQ #1, DELETE EASE #1 DELETE MAINT. AGREE. AREA #1 CHANGE RELINQ #2 TO #1 PER C.O. # 4802	11-21-80	EGH	NBB

MADE BY: WJM DATE: 3-12-69  
CHECKED BY: DATE: 3-22-72

PRESENT R.O.W.  
--- TAKING WITHOUT ACCESS  
--- TAKING WITHOUT ACCESS ALONG PROPERTY LINES  
--- TAKING WITH ACCESS  
(P) PERMANENT EASEMENT  
(T) TEMPORARY EASEMENT

LEGEND

--- SR --- SR --- SLOPE RIGHTS  
--- P --- P --- PROPERTY LINE  
--- Δ --- Δ --- TOP OF CUT  
--- O --- O --- TOE OF SLOPE

APPROVED: \_\_\_\_\_ DATE: \_\_\_\_\_  
CHIEF OF PLANS & TITLE  
APPROVED: \_\_\_\_\_ DATE: \_\_\_\_\_  
P.W. DIRECTOR

PROJECT: ST. JOHNSBURY  
NO. F023-4(3)  
SHEET 7 OF 19



STATE OF VERMONT  
DEPARTMENT OF HIGHWAYS  
RIGHT-OF-WAY PLANS  
DETAIL SHEET  
OF

TABLE OF PROJECT PROPERTY ACQUISITION

TABLE OF REVISIONS

PARCEL NO.	GRANTOR	SHEET NO.	BEGINNING STATION	ENDING STATION	TAKING	REM.	RIGHTS	TITLE TAKEN	DATE	TOWN OR CITY RECORDED	BK.	PG.	REMARKS	
19A	MURPHY REALTY CO. INC.	11, 12	RTE 2 RELOC	RTE 2 RELOC	0.14 A±			Cond. 7-16-73	St. Johnsbury	145	474	489		
			101+00	104+21			SLOPE (T) (325°)							
			RTE 2 RELOC	RTE 2 RELOC			DRIVE (T)							
			101+00	102+20										
19B		11, 12	RTE 2 RELOC	RTE 2 RELOC	0.9 A±									
			101+00 RT	104+9 RT			SLOPE (T) (1300°)							
			RTE 2 RELOC	RTE 2 RELOC										
			102+80 RT	102+17 RT										
19C		11, 12	RTE 2 RELOC	RTE 2 RELOC	2650'									
			101+12 LT	102+13 LT			SLOPE (T) (650°)							
19D		12	RTE 2 RELOC	CENTRAL ST	0.16 A±									
			101+35 LT	3+50 RT			ALL RT & I							
			CENTRAL ST	CENTRAL ST			SLOPE (T) (3100°)							
			0+82 RT	3+50 RT			DRIVE (T)							
			CENTRAL ST				DRIVE (T)							
			RTE 2 RELOC	CENTRAL ST	0.8 A±									
			102+13 LT	3+50 RT	0.8 A±									
			TOTAL		0.66 A±	1.7 A±								
20	CENTRAL VERMONT PUBLIC SERVICE CORP							Cond. 7-16-73	St. Johnsbury	145	474	489	UTILITY	
21	NEW ENGLAND TELEPHONE & TELEGRAPH COMPANY							Cond. 7-16-73	St. Johnsbury	145	474	489	UTILITY	

REVISION NO.	SHEET NO.	DESCRIPTION OF REVISION	DATE	MADE BY	APPROVED BY

MADE BY: K.M.D. DATE: FEB 7, 1972  
 CHECKED BY: W.B.B. DATE: 2-22-72

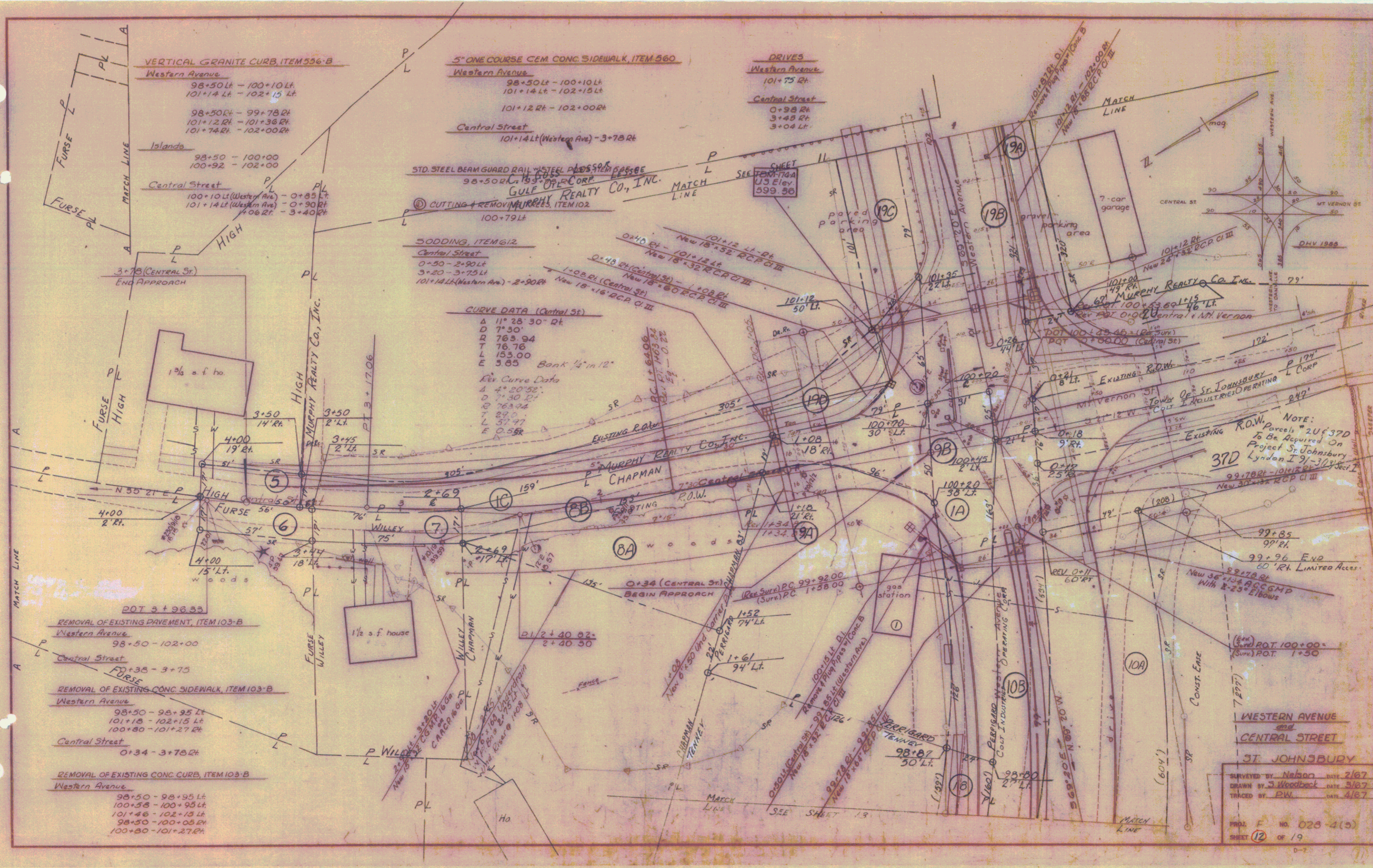
LEGEND

— — — — — PRESENT R.O.W.	— SR — SR — SLOPE RIGHTS
— # — # — TAKING WITHOUT ACCESS	— P — P — PROPERTY LINE
— # — # — TAKING WITHOUT ACCESS ALONG PROPERTY LINE	— Δ — Δ — TOP OF CUT
— — — — — TAKING WITH ACCESS	— O — O — TOE OF SLOPE
(P) PERMANENT EASEMENT	
(T) TEMPORARY EASEMENT	

APPROVED: \_\_\_\_\_ DATE: \_\_\_\_\_  
 CHIEF OF PLANS & TITLES  
 APPROVED: \_\_\_\_\_ DATE: \_\_\_\_\_  
 H. W. DIRECTOR  
 PROJECT: ST JOHNSBURY  
 NO. F028-4 (3)  
 SHEET: 9 OF 12







NOTE:  
 Existing R.O.W. Parcel 20' x 370'  
 To Be Acquired On  
 Project St. Johnsbury  
 Lyndon I 9' - 363' Sec. I  
 99.788' - 101.16' R.O.P. I  
 New 30' x 32' R.O.P. C.I.I.I.

WESTERN AVENUE  
 CENTRAL STREET  
 ST. JOHN SBURY  
 SURVEYED BY Nelson DATE 2/67  
 DRAWN BY J. Woodbeck DATE 3/67  
 TRACED BY PW DATE 4/67  
 PROJ. NO. 025-4(3)  
 SHEET 12 OF 19  
 D-2

**VERTICAL GRANITE CURB, ITEM 556-B**

Western Avenue  
 95+74.4 - 97+12.4  
 97+28.4 - 97+40.4  
 97+58.4 - 98+50.4  
 97+25.4R - 98+50.4R

**SURV CURVE DATA**

Δ 21° 48' 10"  
 D 70'-15"  
 R 790.24  
 T 152.21  
 L 300.73'  
 Bank 1/4" per ft

**Islands**

93+50 - 94+75  
 95+15 - 98+50

**STD STEEL BEAM GUARD RAIL W/STEEL POSTS, ITEM 545-A**  
 93+90.5R - 98+50.4R

**REMOVAL OF EXISTING PAVEMENT, ITEM 103-B**  
 94+60 - 97+00  
 97+00 - 98+50

**REMOVAL OF EXISTING CONC SIDEWALK, ITEM 103-B**  
 95+15 - 97+10.4  
 97+25 - 97+35.4  
 97+60 - 98+50.4

**REMOVAL OF EXISTING CONC CURB, ITEM 103-B**  
 95+15 - 97+12.4  
 97+25 - 97+35.4  
 97+50 - 98+50.4  
 94+60 - 98+50.4

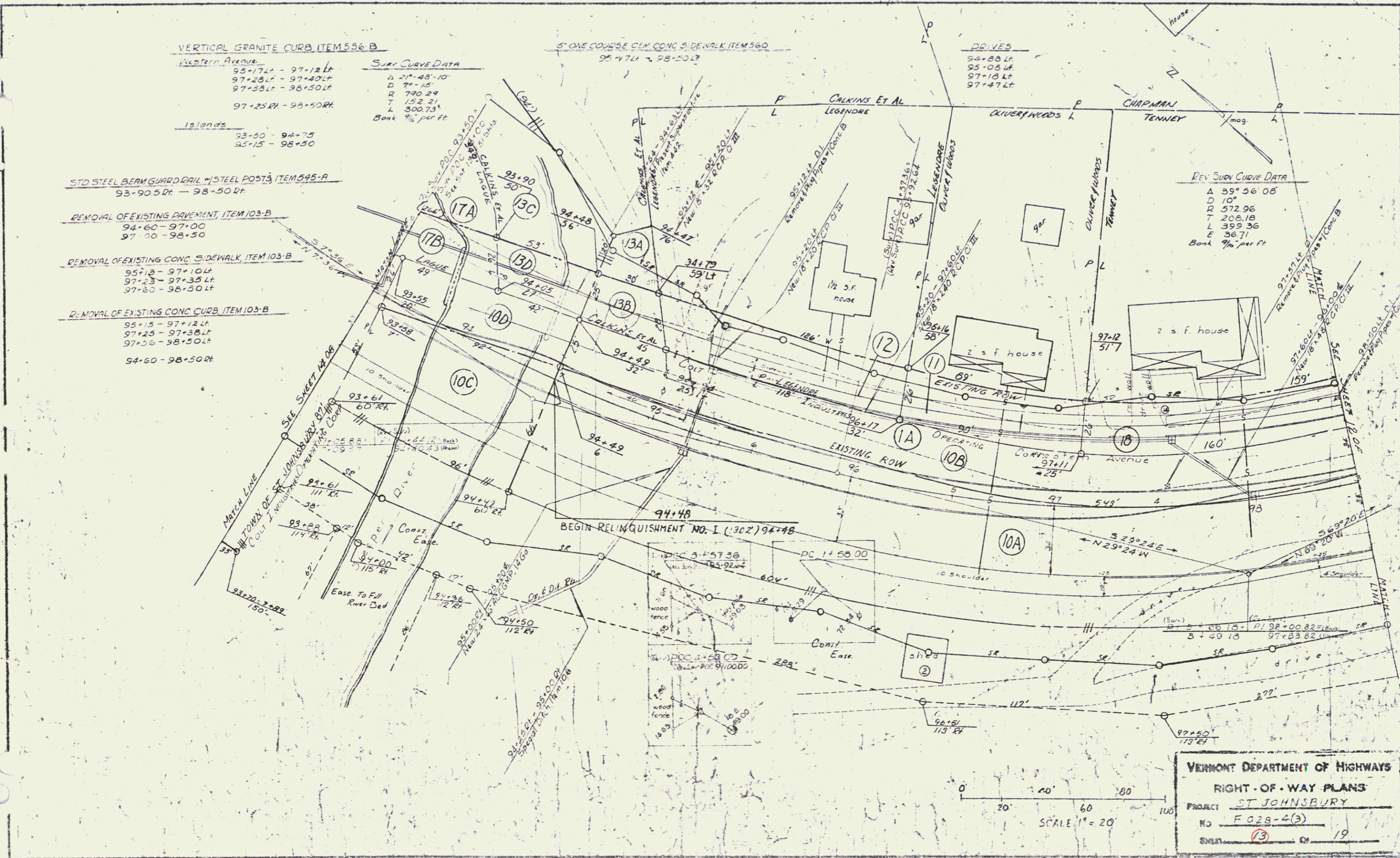
**5" ONE COURSE CONG SIDEWALK, ITEM 560**  
 95+74.4 - 98+50.4

**DRIVES**

94+88.4  
 95+08.4  
 97+18.4  
 97+47.4

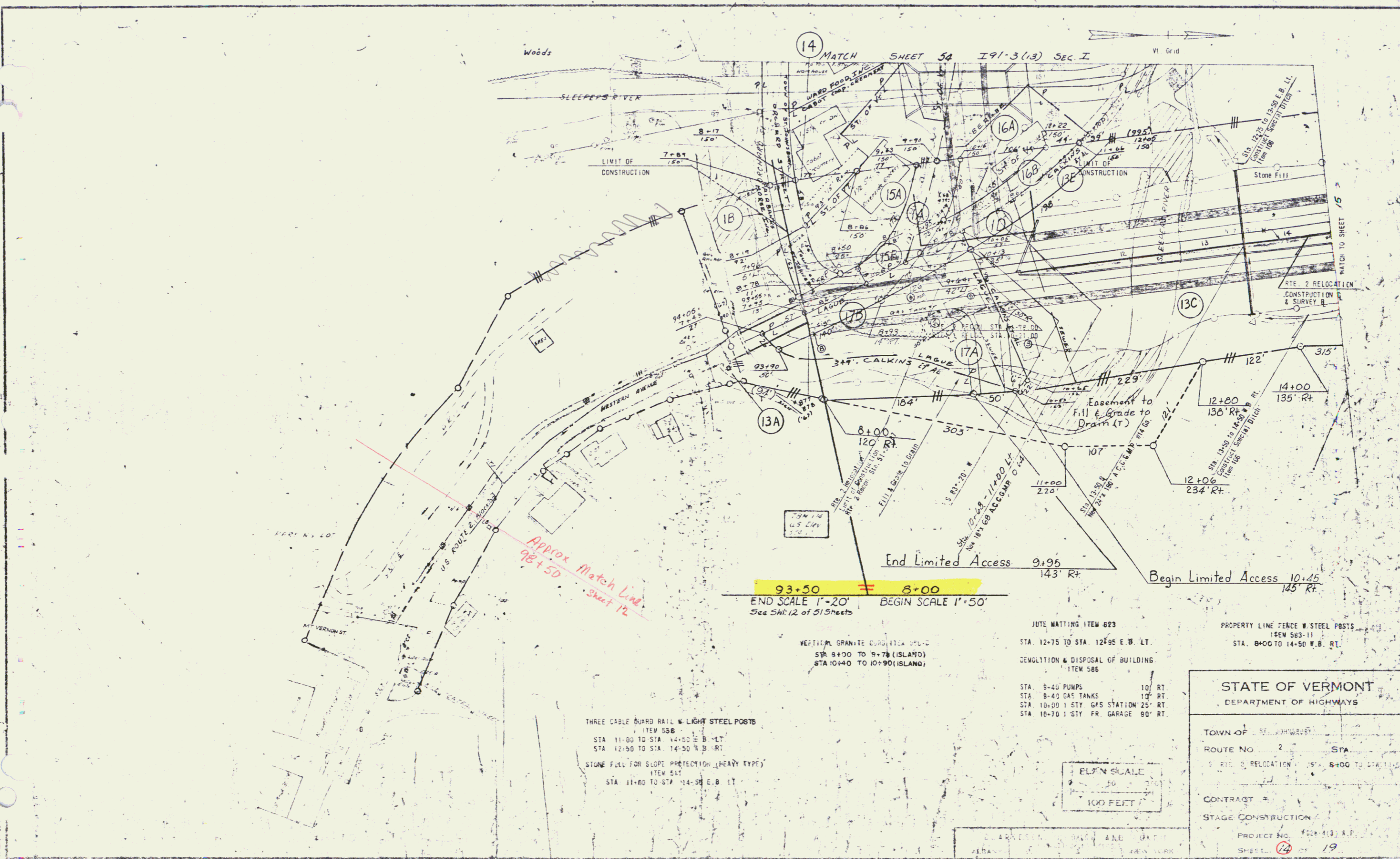
**REV SURV CURVE DATA**

Δ 59° 56' 08"  
 D 10'  
 R 572.96  
 T 208.18  
 L 399.36  
 E 36.7'  
 Bank 1/4" per ft



**VERMONT DEPARTMENT OF HIGHWAYS**  
**RIGHT-OF-WAY PLANS**  
 PROJECT ST JOHNSBURY  
 NO F 028-4(3)  
 SHEET 13 OF 19

POOR ORIGINAL COPY



*Approx Match Line  
98+50 Sheet 12*

93+50 8+00  
 END SCALE 1"=20' BEGIN SCALE 1"=50'  
 See SH: 12 of 515 sheets

End Limited Access 9+95 143' RT  
 Begin Limited Access 10+45 145' RT

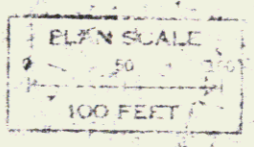
THREE CABLE BOUND RAIL & LIGHT STEEL POSTS  
 ITEM 586  
 STA 11+00 TO STA 14+50 E.B. LT  
 STA 12+50 TO STA 14+50 W.B. RT  
 STONE FILL FOR SLOPE PROTECTION (HEAVY TYPE)  
 ITEM 511  
 STA 11+00 TO STA 14+50 E.B. LT

VERTICAL GRANITE CURB/11CA SPUR  
 STA 8+00 TO 9+78 (ISLAND)  
 STA 10+40 TO 10+90 (ISLAND)

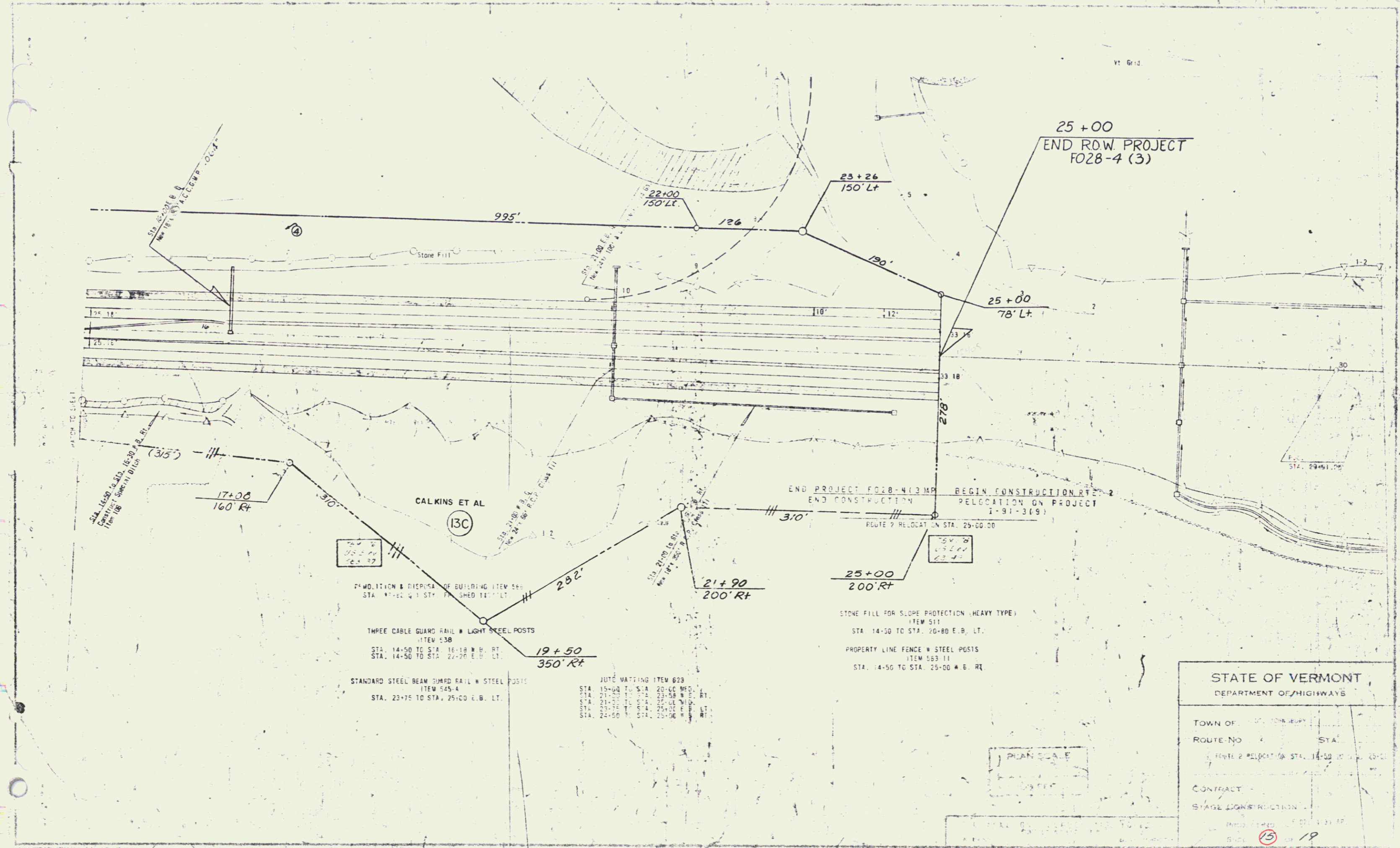
JUTE MATTING ITEM 623  
 STA 12+75 TO STA 12+95 E.B. LT.  
 DEMOLITION & DISPOSAL OF BUILDING  
 ITEM 588  
 STA 9+40 PUMPS 10' RT  
 STA 9+40 GAS TANKS 10' RT  
 STA 10+00 1 STY GAS STATION 25' RT  
 STA 10+70 1 STY FR. GARAGE 90' RT

PROPERTY LINE FENCE W STEEL POSTS  
 ITEM 583-11  
 STA. 8+00 TO 14+50 W.B. RT.

<b>STATE OF VERMONT</b> DEPARTMENT OF HIGHWAYS	
TOWN OF <u>ST. JOHNSBURY</u>	STA
ROUTE NO. <u>2</u>	STA
ST. 2 RELOCATION 12+50 TO STA 14+50	
CONTRACT NO. <u>124</u>	
STAGE CONSTRUCTION	
PROJECT NO. <u>FOUR 413</u> R.P.	
SHEET <u>124</u> OF <u>19</u>	



POOR ORIGINAL COPY



Vt. Grid

25+00  
END ROW PROJECT  
FO28-4 (3)

END PROJECT FO28-4 (3) MP  
END CONSTRUCTION  
BEGIN CONSTRUCTION RTE. 2  
RELOCATION ON PROJECT  
1-91-3(9)

ROUTE 9 RELOCAT. ON STA. 25+00.00

CALKINS ET AL  
13C

REMOVAL & DISPOSAL OF BUILDING ITEM 586  
STA. 14+50 TO STA. 16+18 E.B. LT.  
STA. 14+50 TO STA. 22+28 E.B. LT.

THREE CABLE GUARD RAIL & LIGHT STEEL POSTS  
ITEM 538  
STA. 14+50 TO STA. 16+18 E.B. LT.  
STA. 14+50 TO STA. 22+28 E.B. LT.

STANDARD STEEL BEAM GUARD RAIL & STEEL POSTS  
ITEM 535.4  
STA. 23+75 TO STA. 25+00 E.B. LT.

JUTE MATTING ITEM 629  
STA. 15+00 TO STA. 20+00 E.B. LT.  
STA. 21+00 TO STA. 22+00 E.B. LT.  
STA. 22+00 TO STA. 23+00 E.B. LT.

STONE FILL FOR SLOPE PROTECTION (HEAVY TYPE)  
ITEM 511  
STA. 14+50 TO STA. 20+80 E.B. LT.

PROPERTY LINE FENCE & STEEL POSTS  
ITEM 583.11  
STA. 14+50 TO STA. 25+00 E.B. RL.

STATE OF VERMONT  
DEPARTMENT OF HIGHWAYS

TOWN OF ...

ROUTE NO. ... STA. ...

CONTRACT ...

STAGE CONSTRUCTION ...

PLAN SCALE

POOR ORIGINAL COPY





TOWN OF ST. JOHNSBURY  
 JUNIOR HIGH  
 & TRADE SCHOOL

VERMONT DEPARTMENT OF HIGHWAYS  
 RIGHT-OF-WAY PLANS  
 PROJECT ST. JOHNSBURY  
 NO. F02B-4(3)  
 SHEET 17 OF 19

SCALE - 1" = 50'  
 O INDICATES IRON PIPE MARKER