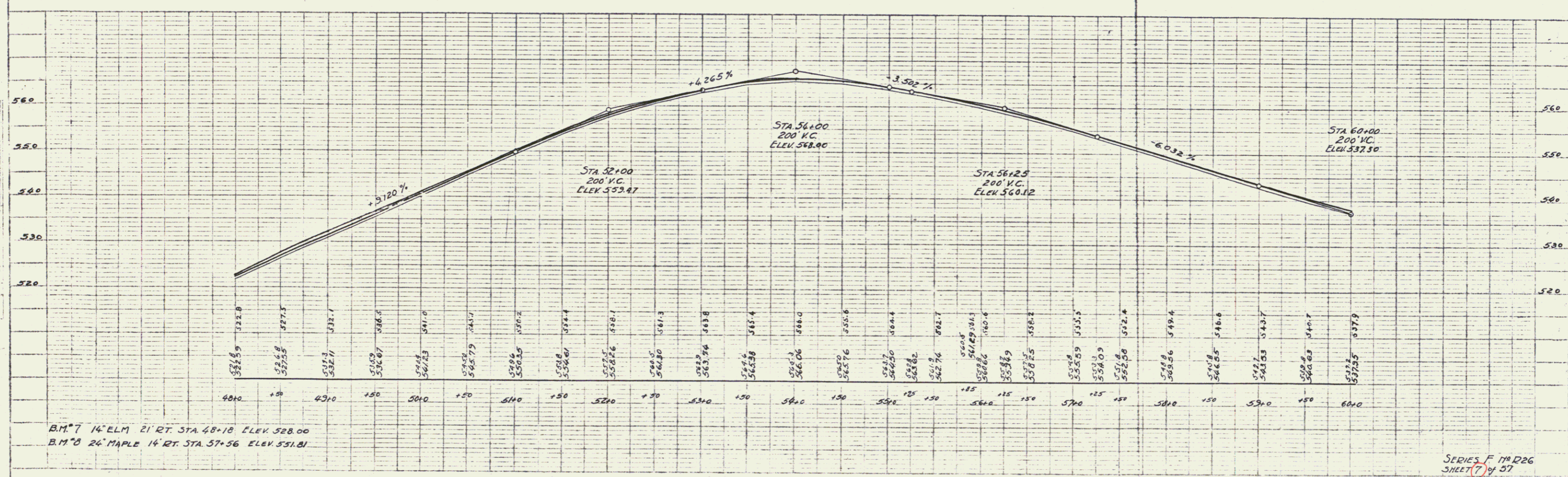
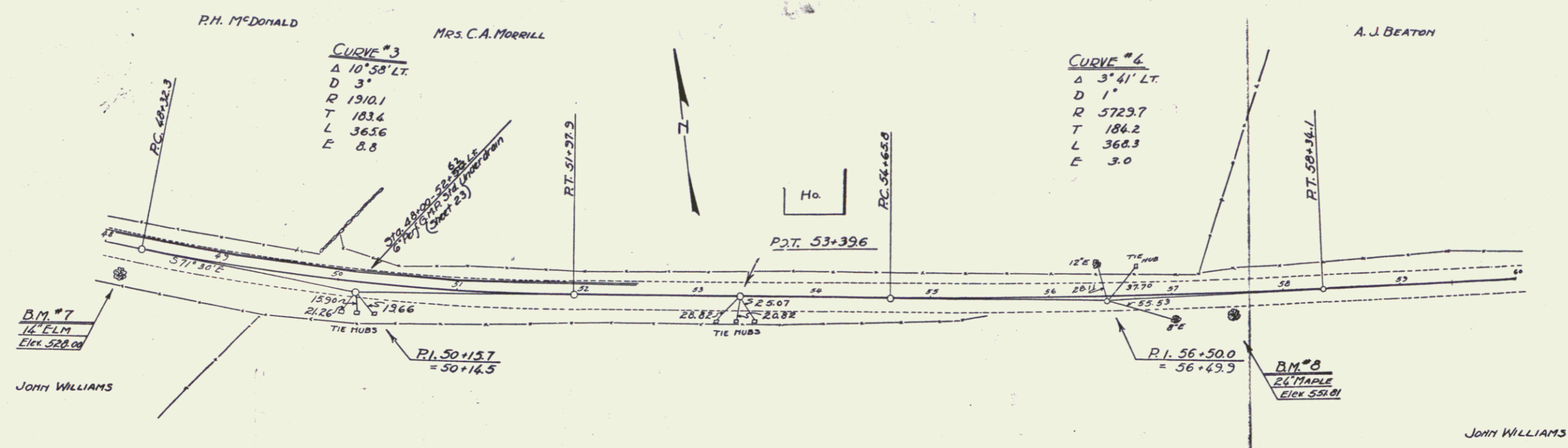


FED. ROAD DIST. NO.	STATE	PROJECT NO.	YEAR	SHEET NO.	TOTAL SHEETS
	VT	R-26	1931	7	27

STB UNDERDRAIN WITH 6" PER. G.P.P. PIPE  
 STATIONS 48+00-52+30 LT.  
 LENGTH 430'  
 PERCENT GRADE 0.32%



B.M. #7 14' ELM 21' RT. STA. 48+10 ELEV. 528.00  
 B.M. #8 24' MAPLE 14' RT. STA. 57+56 ELEV. 551.81

SERIES F 171226  
 SHEET 7 of 27