

WOOD GUARD RAIL REQUIRED

CON. STATION	LEFT	RIGHT
31+75	24'	24'

CABLE GUARD RAIL REQUIRED

STATIONS	L+R	LENS	CONSTANT	ANY LENGTH
20+11-20+35	LT	24'	20'	44'
20+11-20+35	RT	24'	20'	44'
20+45-20+69	LT	24'	20'	44'
20+45-20+69	RT	24'	20'	44'

DRIVEWAY PIPE CULVERTS REQUIRED

STATION	L+R	RELAY
21+35	LT	12'
22+30	RT	16'
26+00	RT	16'

DRIVE CONC PIPE CULVERTS REQUIRED

STATION	DIAM	LENGTH	CONC	STEEL
31+75	15"	40'	2.3 CY	33'
			2.5 CY	46'

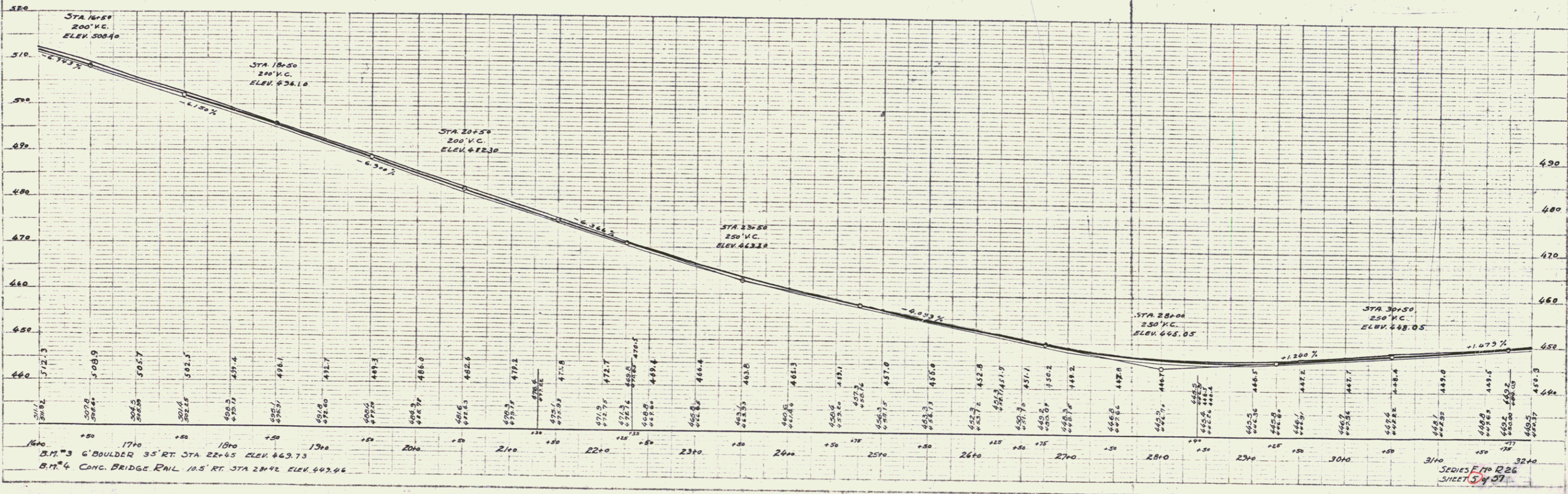
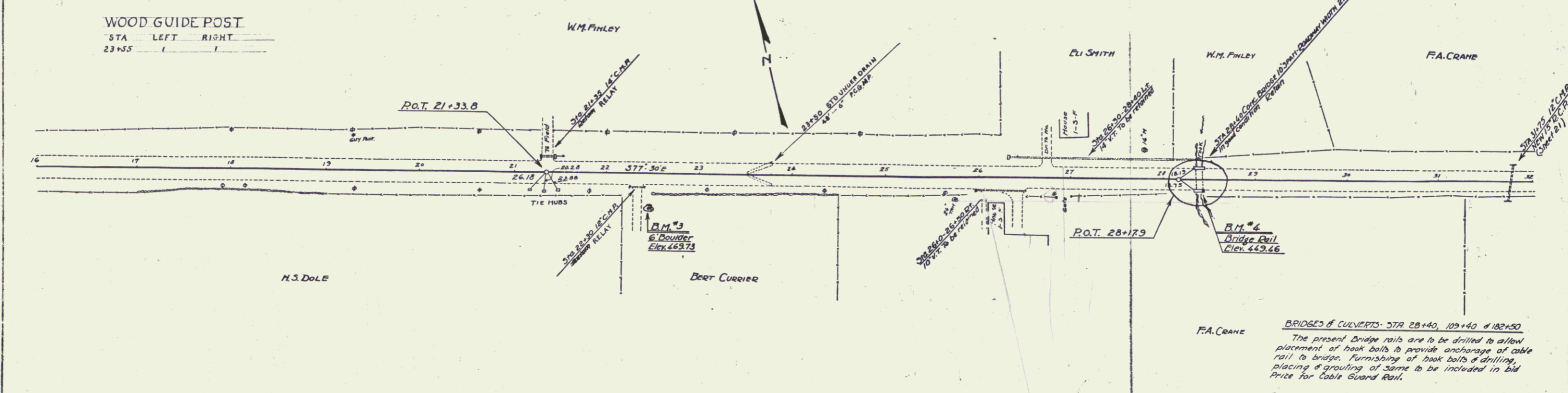
STANDARD UNDER DRAIN 6" PCGMP

STATION	LENGTH
23+50	48'

FED. ROAD DIST. NO.	STATE	PROJECT NO.	SHEET NO.	TOTAL SHEETS
9	VT	R-26	1931	5

WOOD GUIDE POST

STA	LEFT	RIGHT
23+55	1	1



BRIDGES & CULVERTS: STA 28+40, 109+40 & 102+50
 The present bridge rails are to be drilled to allow placement of hook bolts to provide anchorage of cable rail to bridge. Furnishing of hook bolts & drilling, placing & grouting of same to be included in bid price for Cable Guard Rail.

SERIES F 70 R 26
 SHEET 5 of 5