

WOOD GUARD RAIL REQUIRED

CULVERT STATION	LEFT	RIGHT
9+88	24'	24'

CABLE-GUARD-RAIL REQUIRED

STATIONS	LENS	CONCRETE	BY LENGTH
9+88-10+44	RT	112'	40' 182'

NOTE
Where box culverts are to be extended, extension is to be done to existing structure with $\frac{3}{8}$ " deformed bars 3' long, 12" ϕ . These dowels to extend into existing structure a minimum of 12 inches.

CULVERT REPAIRS REQUIRED

CULVERT REPAIRS REQ.

STA.	L OR	COMP.	STEEL	12	12	DI
				CGMT	VITILE	CRATE
2+60	R	0.5 CY	16"			
3+01	R	0.3 CY	24"		6" Rebar	
3+28	R	0.7 CY	40"		6" Rebar	
3+28-3+54	R	0.7 CY	40"	28		
4+88-6+45	R	1.0 CY	70"		185'	JOHN THORNER
7+00-7+12	R				12	1 CY
8+00-8+40	R				12	1 CY

GRouted COBBLE GUTTER REQUIRED

STATIONS	L OR	LENGTH	WIDTH	AREA
4+88-5+25	R	37'	4'	43.89 YDS
5+75-5+94	R	19'	4'-5"	3'

BITUMINUS MACADAM GUTTER REQUIRED

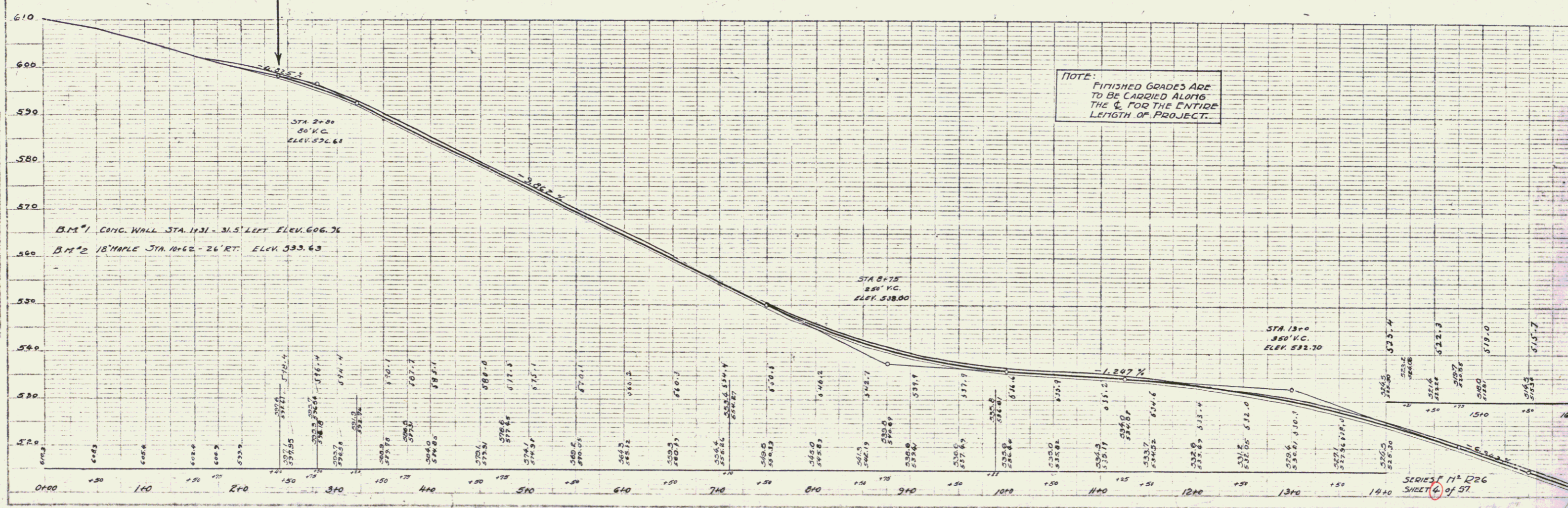
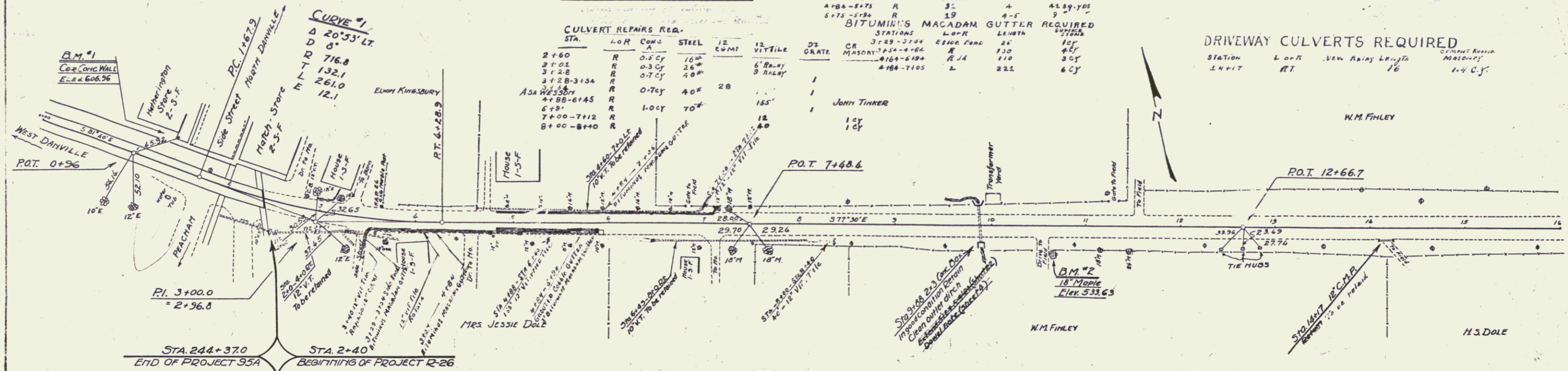
STATIONS	L OR	LENGTH	WIDTH	AREA
3+29-3+44	R	15'	10"	1.07
4+184-4+204	R	20'	10"	2.07
4+184-4+185	L	1'	10"	0.09

DRIVEWAY CULVERTS REQUIRED

STATION	L OR	VEN	ABOVE	LENGTH	WIDTH
14+17	RT			16'	1-4 CY

NOTE: All road and driveway culverts on this project that are to be retained are in good condition, except for repairs called for on the plans.

STATE OF OHIO
DIST. NO. 2-26 1931 4 97



NOTE: FINISHED GRADES ARE TO BE CARRIED ALONG THE ENTIRE LENGTH OF PROJECT.

CE. BURNHAM
AS. SCHAEFER

PROF. B. J. ...
1931

SERIES N^o 226
SHEET 4 of 57