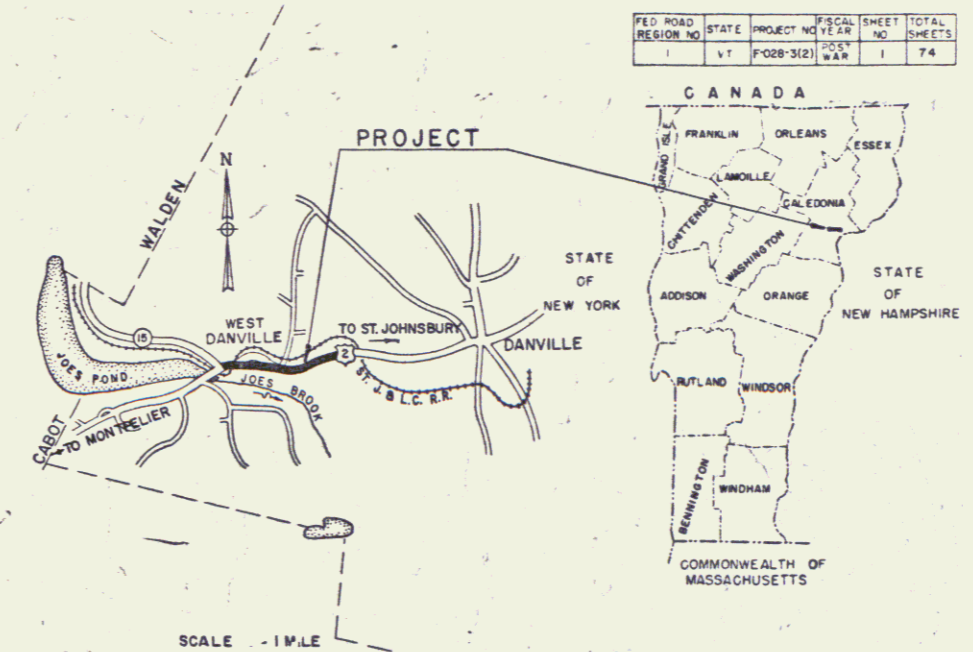


INDEX OF SHEETS

SHEET NO.	DESCRIPTION
1	TITLE SHEET
2	TYPICAL SECTIONS OF IMPROVEMENT BITUMINOUS CONCRETE PAVEMENT ITEM 201-3, MOD.
3	QUANTITY SHEET (ITEMS)
4	ITEM DETAIL & DRAINAGE SHEET
5-6	EARTHWORKS
7-11	PLAN & PROFILE SHEETS
12	CULVERT DETAILS AT STA. 115+79
13	A-61 DRILLING & BLASTING
14	B-1 BANKING TABLES
15	B-5 TYPICAL SLOPE GRADING
16	B-6 MUCK EXCAVATION
17	B-10 EMBANKMENT
18	B-11 SLOPE STABILIZATION
19	B-12 SIDE ROAD INTERSECTION
20	B-13 DRIVE INTERSECTION
21	D-2 CEMENT RUBBLE MASONRY
22	D-3 GUTTERS
23	D-4 A.C.C.G. METAL PLATE PIPE
24	D-8 DROP INLETS
24-A	D-11 CAST IRON GRATES
24-B	E-1 BARRICADES, SIGNS, & LIGHTS
24-C	G-3 THREE CABLE GUARD RAIL WITH STEEL POSTS
24-D	G-4 STEEL MARKER POSTS
24-E	J-1 ERECTION OF PROJECT MARKERS
25-74	CROSS SECTIONS
74-B	PLAN & PROFILE - R.R. WARNING SIGN
74-C	WIRING DIAGRAM FOR FLASHING DEVICES
74-D	FLASHING LIGHT ASSEMBLY
74-E	RAILROAD CROSS SECTION

STATE OF VERMONT
DEPARTMENT OF HIGHWAYS
PROPOSED IMPROVEMENT
 FEDERAL AID PROJECT
TOWN OF DANVILLE
 COUNTY OF CALEDONIA
U.S. ROUTE 2

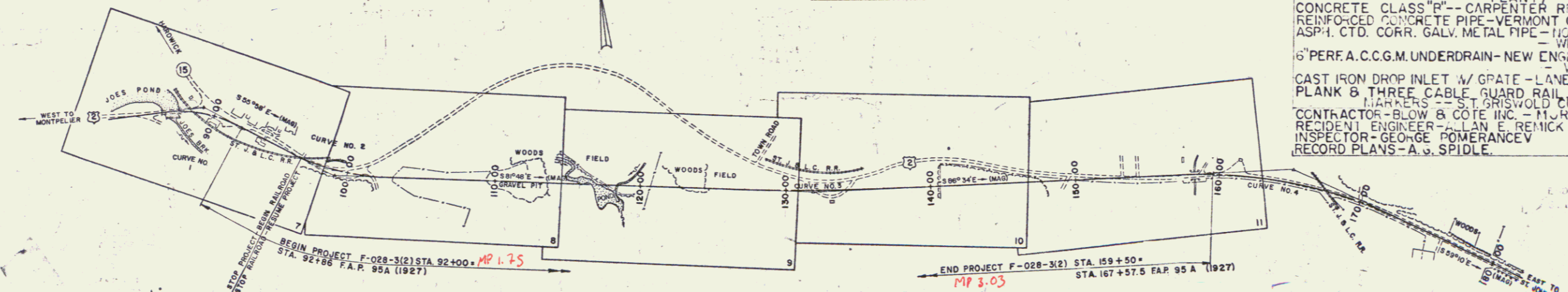
Pin # 99R132



BEGINNING 440 FEET EASTERLY OF THE HIGHWAY BRIDGE OVER JOES BROOK ON U.S. ROUTE 2
 IN THE VILLAGE OF WEST DANVILLE AND EXTENDING 6,750 FEET EASTERLY ALONG U.S. ROUTE 2,
 INCLUDING RAILROAD CROSSING
 LENGTH OF PROJECT 6,724 FEET = 1.273 MILES, EXCLUDING R.R. CROSSING

DESIGN DESIGNATION

ADT (1955)	880-1910
ADT (1975)	1385-3400
DHV (1975)	208-460
D	60%
T	7-6%
V	50 MPH



PROJECT NAME & NUMBER TYPE PAVEMENT AREA
 DANVILLE F 028-3(2) BIT. CONC. PAVT 21,056 s.y.

RECORD PLANS
MATERIALS

SUBBASE OF GRAVEL - GRVEL SHOULDERS-LUSSIER PIT-HARDWICK, VERMONT.
 SUBBASE OF CRUSHED ROCK-DANVILLE QUARRY-WEST DANVILLE, VT.
 REFINED TAR - MOBILE OIL CO - EAST PROVIDENCE, RHODE ISLAND.
 BITUMINOUS CONCRETE - L.M. PIKE & SON (LISBON, N.H. & PLAINFIEL, VT.
 CONCRETE CLASS "B" - CARPENTER READY MIX - ST. JOHNSBURY, VERMONT.
 REINFORCED CONCRETE PIPE - VERMONT CONCRETE PIPE CO. - WINDSOR, VERMONT.
 ASPH. CTD. CORR. GALV. METAL PIPE - NORTH STAR CULVERT CO. -
 6" PER F.A.C.C.G.M. UNDERDRAIN - NEW ENGLAND METAL CULVERT CO. -
 CAST IRON DROP INLET W/ GRATE - LANE MFG. CO. - MONTPELIER, VERMONT.
 PLANK & THREE CABLE GUARD RAIL MARKER POSTS & BOUNDARY
 MARKERS - S.T. GRISWOLD CO. INC. - ESSEX JUNCTION, VERMONT.
 CONTRACTOR - BLOW & COTE INC. - MORRISVILLE, VERMONT.
 RESIDENT ENGINEER - COLMAN E. REMICK
 INSPECTOR - GEORGE COLMAN E. REMICK
 RECORD PLANS - A. V. SPIDLE

CONTRACT DATED - MAY 20, 1959
 CONTRACT STARTED - JUNE 17, 1959
 CONTRACT COMPLETED - OCT. 3, 1960
 CONTRACT ACCEPTED - OCT. 3, 1960

PROJECT DANVILLE
 ROUTE F 028-3(2)
 TYPE BITUMINOUS CONCRETE PAVEMENT

CONTRACTOR BLOW & COTE, INC.
 MORRISVILLE, VERMONT.
 TRAIL 855-160

LOCATION Beginning 440 feet easterly of the highway bridge over Joes Brook on U.S. Route 2 in the village of West Danville and extending 6,750 feet easterly along U.S. Route 2 including railroad crossing.

DANVILLE F 028-3(2)
 CONTRACTOR BLOW & COTE, INC. - MORRISVILLE, VT.
 RECORD PLANS - ALEXANDER G. SPIDLE
 CONTRACT COMPLETED - OCTOBER 3, 1960.

GROUND ELEVATION DATUM LEFT LINE
GRADE ELEVATION DATUM LEFT LINE

CURVE DATA

DEFLECTION OF ANGLE	Δ
DEGREE OF CURVE	D
RADIUS OF CURVE	R
TANGENT DISTANCE	T
LENGTH OF CURVE	L
EXTERNAL DISTANCE	E
POINT OF INTERSECTION	P.I.
POINT OF CURVE	P.C.
POINT OF TANGENT	P.T.
POINT ON TANGENT	P.O.T.
POINT ON SUB-TANGENT	POST

SCALES

TITLE	1" = 400'
TYPICAL	1" = 30'
PLAN	1" = 80'
PROFILE HORIZONTAL	1" = 80'
PROFILE VERTICAL	1" = 10'
CROSS-SECTIONS	1" = 5' & 10'

APPROVED SECONDARY ENGINEER	APPROVED CONSTRUCTION SUPERVISOR	APPROVED ENGINEER	APPROVED DISTRICT ENGINEER	APPROVED HIGHWAY ENGINEER	APPROVED CHIEF ENGINEER
DATE	DATE 19 Feb. 1959	DATE 19 Feb. 1959	DATE 12 JANUARY 1959	DATE 19 Feb. 1959	DATE 20 FEB. 1959

RIGHT-OF-WAY DIVISION
TOWN FILE
PERPETUAL
 Town of US
 (To Be Returned To R.O.W. Division)

NOTE: ANY FURTHER INFORMATION CONCERNING FINAL QUANTITIES SHOULD BE OBTAINED RELATIVE TO THIS PROJECT AND BE BASED ON EITHER THE FIELD BOOKS OR THE ESTIMATE FILE.

THESE PLANS ARE SUBJECT TO SUCH REVISIONS AS MAY BE REQUIRED BY THE BUREAU OF PUBLIC ROADS OR THE COMMISSIONER OF HIGHWAYS.

CONSTRUCTION IS TO BE CARRIED ON IN ACCORDANCE WITH THE PLANS AND THE STANDARD SPECIFICATIONS FOR HIGHWAY AND BRIDGE CONSTRUCTION OF JANUARY 1956 SUBMITTED TO THE BUREAU OF PUBLIC ROADS AS APPROVED JULY 5, 1956 INCLUDING ALL SUBSEQUENT APPROVED REVISIONS AND SUCH REVISED SPECIFICATIONS AND SPECIAL PROVISIONS AS ARE SUBMITTED WITH THE PLANS.

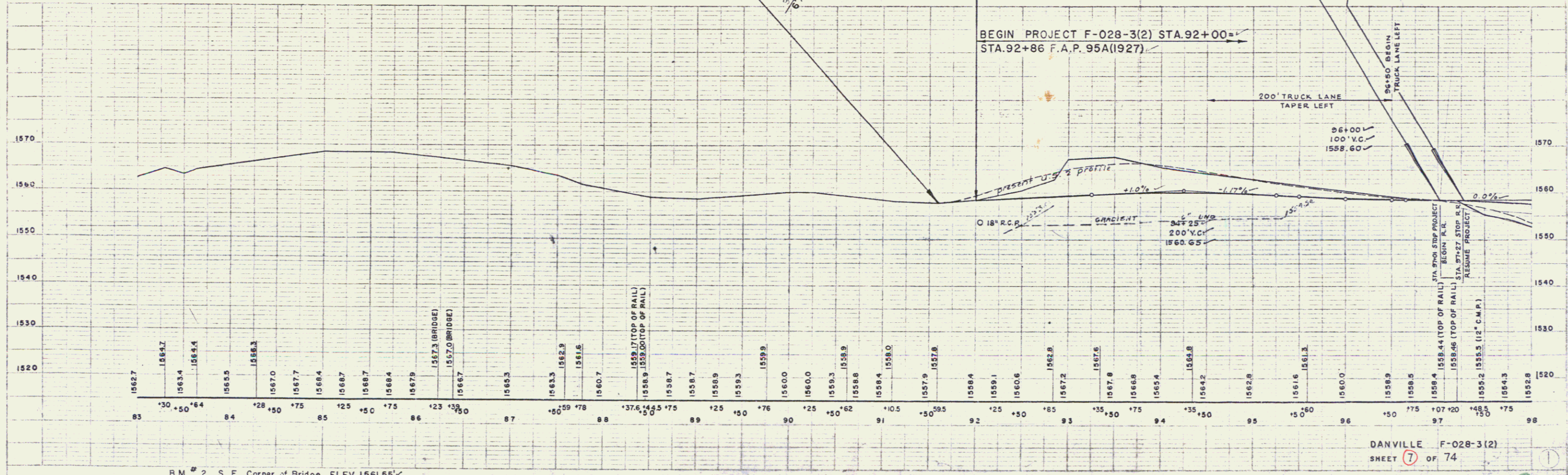
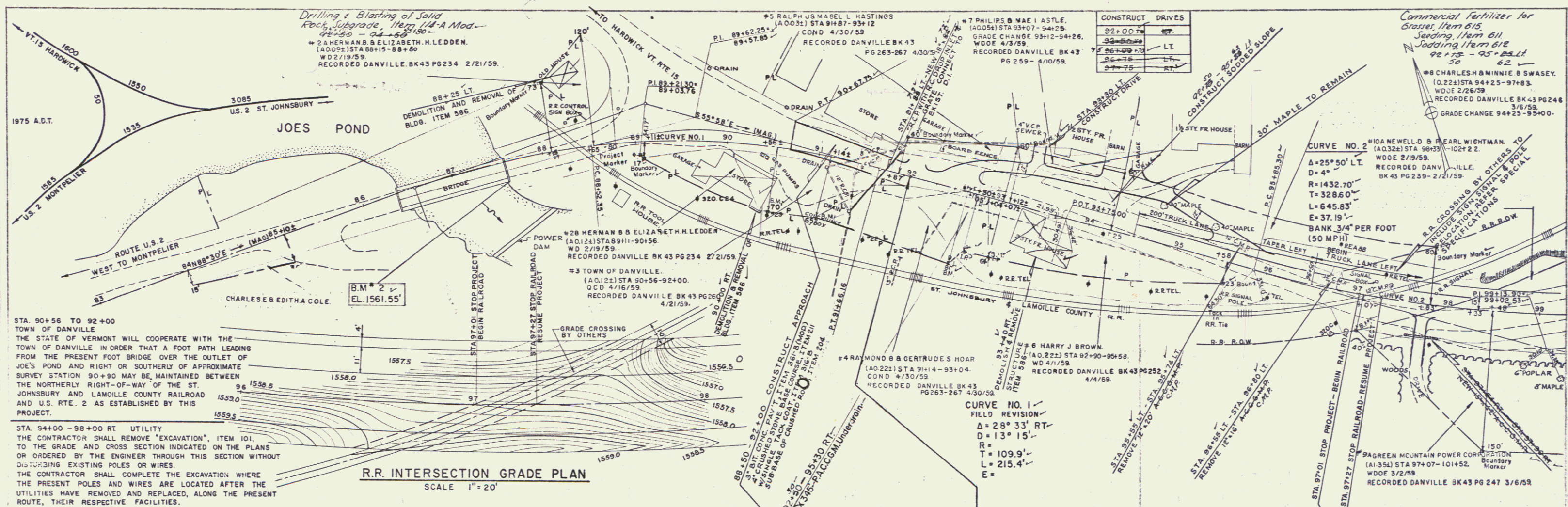
DEPARTMENT OF COMMERCE
 BUREAU OF PUBLIC ROADS

APPROVED _____ DATE _____

DIVISION ENGINEER _____ DATE _____

PROJECT F NO. 028-3(2)

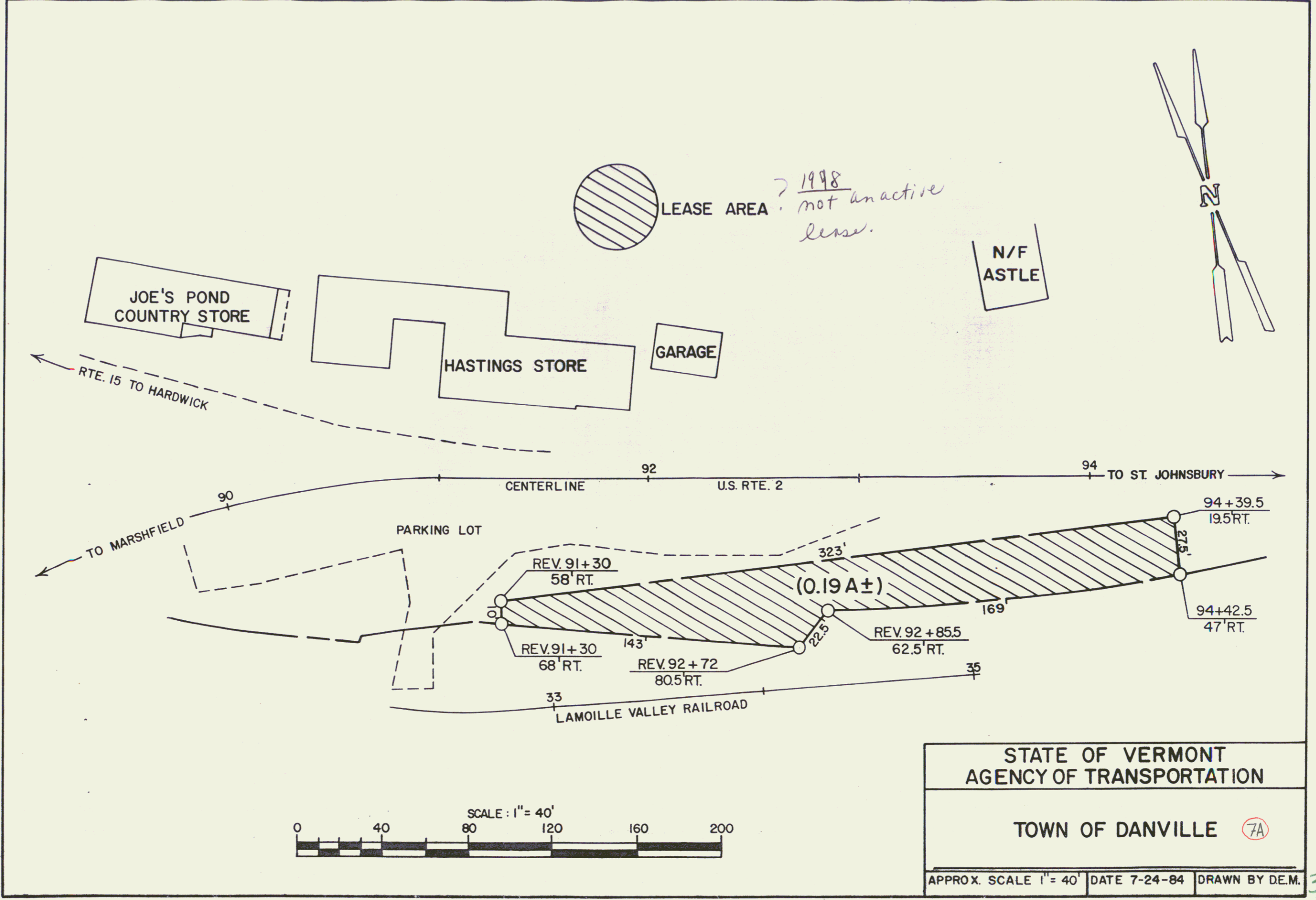
SHEET 1 OF 74 SHEETS



STA. 90+56 TO 92+00
TOWN OF DANVILLE
THE STATE OF VERMONT WILL COOPERATE WITH THE TOWN OF DANVILLE IN ORDER THAT A FOOT PATH LEADING FROM THE PRESENT FOOT BRIDGE OVER THE OUTLET OF JOES POND AND RIGHT OR SOUTHERLY OF APPROXIMATE SURVEY STATION 90+80 MAY BE MAINTAINED BETWEEN THE NORTHERLY RIGHT-OF-WAY OF THE ST. JOHNSBURY AND LANOILLE COUNTY RAILROAD AND U.S. RTE. 2 AS ESTABLISHED BY THIS PROJECT.

STA. 94+00 - 98+00 RT. UTILITY
THE CONTRACTOR SHALL REMOVE "EXCAVATION" ITEM 101 TO THE GRADE AND CROSS SECTION INDICATED ON THE PLANS OR ORDERED BY THE ENGINEER THROUGH THIS SECTION WITHOUT DISTURBING EXISTING POLES OR WIRES.
THE CONTRACTOR SHALL COMPLETE THE EXCAVATION WHERE THE PRESENT POLES AND WIRES ARE LOCATED AFTER THE UTILITIES HAVE BEEN REMOVED AND REPLACED, ALONG THE PRESENT ROUTE, THEIR RESPECTIVE FACILITIES.

BEGIN PROJECT F-028-3(2) STA. 92+00
STA. 92+86 F.A.P. 95A(1927)



LEASE AREA ¹⁹⁹⁸ not an active lease.

N/F
ASTLE

JOE'S POND
COUNTRY STORE

HASTINGS STORE

GARAGE

RTE. 15 TO HARDWICK

TO MARSHFIELD

CENTERLINE

U.S. RTE. 2

TO ST. JOHNSBURY

PARKING LOT

REV. 91+30

58' RT.

REV. 91+30

68' RT.

REV. 92+72

80.5' RT.

REV. 92+85.5

62.5' RT.

94+39.5

19.5' RT.

94+42.5

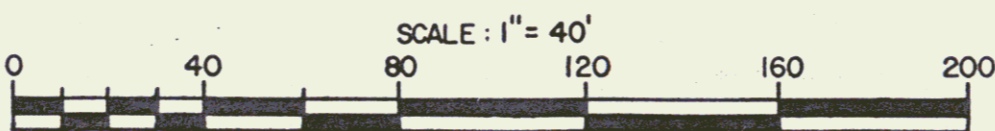
47' RT.

(0.19A±)

LAMOILLE VALLEY RAILROAD

STATE OF VERMONT
AGENCY OF TRANSPORTATION

TOWN OF DANVILLE (7A)



APPROX. SCALE 1" = 40' DATE 7-24-84 DRAWN BY D.E.M.

3

EXCAVATION and REMOVAL of ROAD SURFACES on ROADWAYS 100+75 - 101+75 L.

10A NEWELL D & PEARL WIGHTMAN

APPROACHES
LT 102+0
RT 102+0

CURVE NO. 2
Δ=25° 50' LT.
D=4"
R=1432.70'
T=328.60'
L=645.83'
E=37.19'
BANK 3/4" PER FOOT

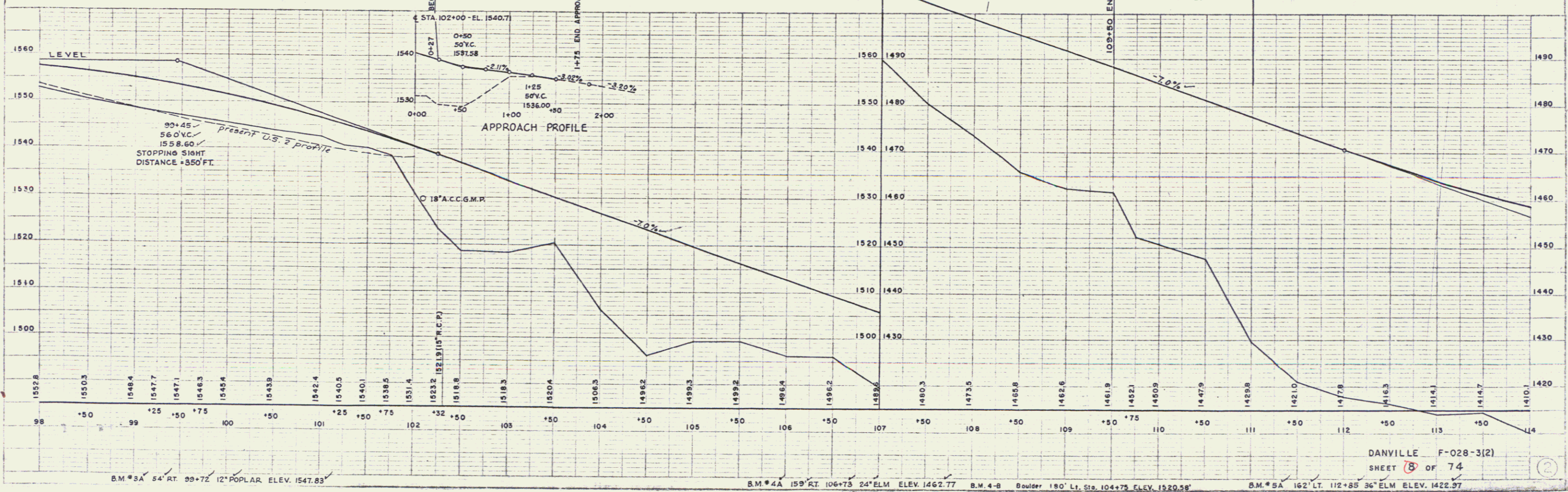
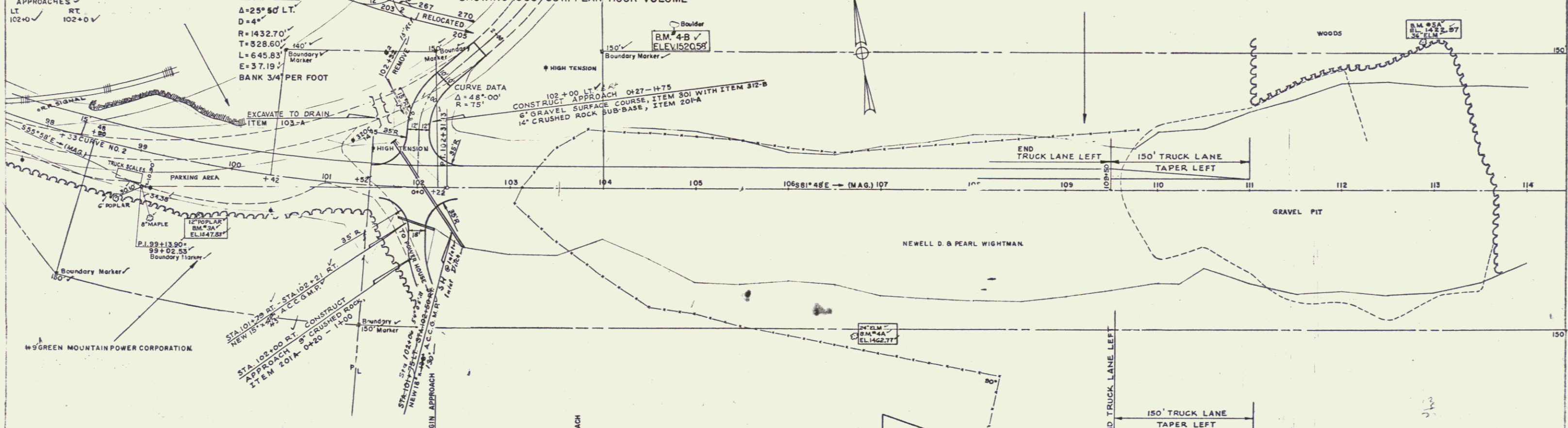
TURNING MOVEMENT DIAGRAM SHOWING 1980/30th PEAK HOUR VOLUME

Control of from survey point 170' left of Danville

Section of Highway beginning at a point in the center of former U.S. Route 2, 280' left or northerly measured at right angle station 103+80 of Highway Project F-028-3(2); thence 0.49 mile, more or less, easterly in the center line of former U.S. Route 2, to a point northerly measured at right angle from survey station 128+00 of said Highway Project is hereby relinquished and returned to the Town and recorded in Book 4 Page 248 of Misc. Records, of the Town of Danville, Jan. 9, 1961.

10B NEWELL D & PEARL WIGHTMAN
(A13.25E) STA 101+52-121+10
CULVERT RIGHTS STA 102+00-119+00(3)
WIDE 2/19/59
RECORDED DANVILLE BK 43 PG 239 2/20/59.

PLANK GUARD RAIL W/PRES. TREATMENT-
LT. 101+85 24'
RT. 107+25 24'
THREE CABLE GUARD RAIL WITH STEEL POSTS
LT. 107+25 24'
RT. 102+25 24'
107+25-114+10 102+25-114+10



B.M. # 3A 54' RT. 89+72 12" POPLAR. ELEV. 1547.83'

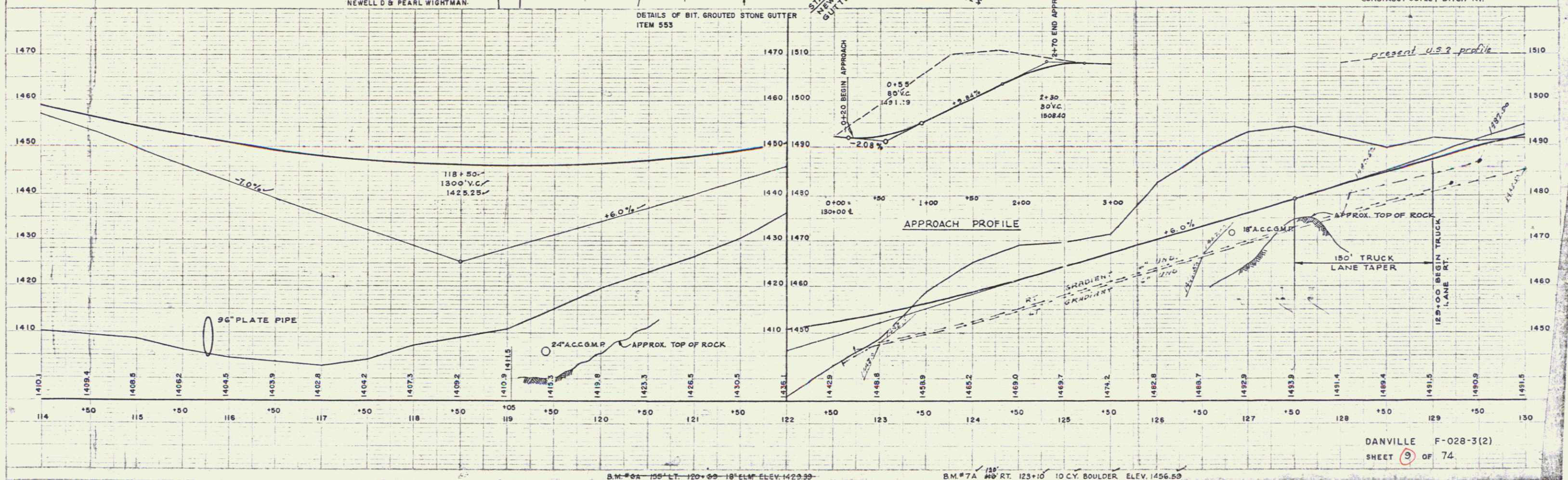
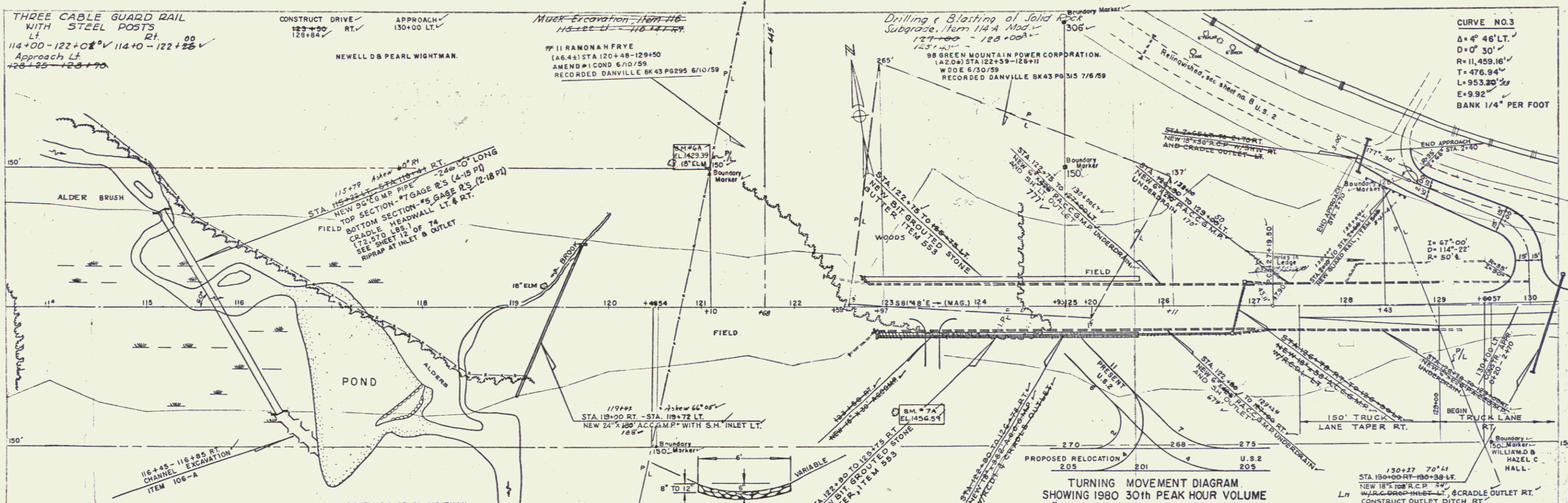
B.M. # 4A 159' RT. 106+73 24" ELM. ELEV. 1462.77'

B.M. # 4-B Boulder 180' Lt. Sta. 104+75 ELEV. 1520.58'

B.M. # 5A 162' LT. 112+85 36" ELM. ELEV. 1422.97'

DANVILLE F-028-3(2)
SHEET 8 OF 74

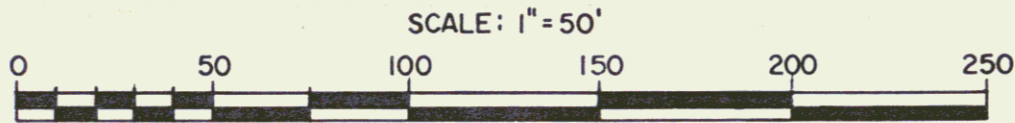
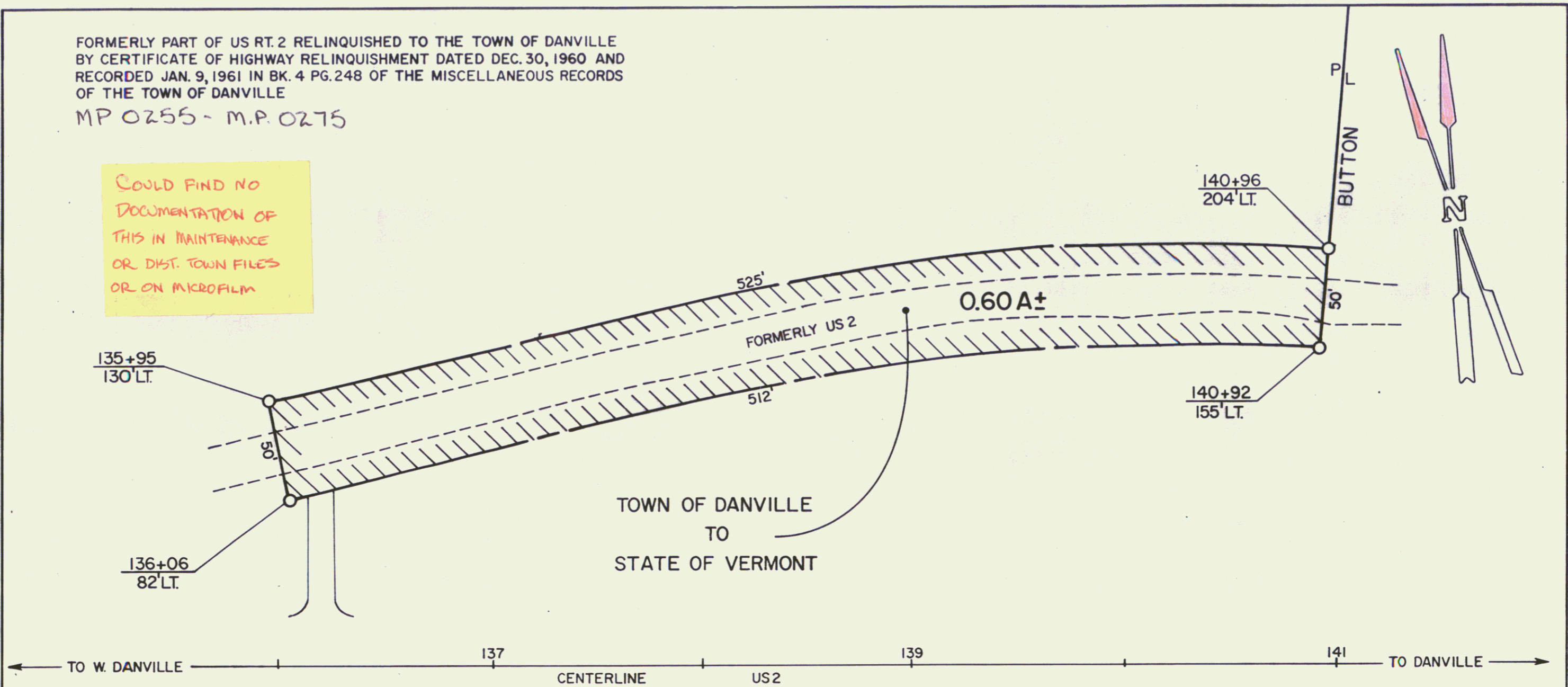
4



FORMERLY PART OF US RT. 2 RELINQUISHED TO THE TOWN OF DANVILLE
 BY CERTIFICATE OF HIGHWAY RELINQUISHMENT DATED DEC. 30, 1960 AND
 RECORDED JAN. 9, 1961 IN BK. 4 PG. 248 OF THE MISCELLANEOUS RECORDS
 OF THE TOWN OF DANVILLE

MP 0255 - M.P. 0275

COULD FIND NO
 DOCUMENTATION OF
 THIS IN MAINTENANCE
 OR DIST. TOWN FILES
 OR ON MICROFILM



REF. SHEET 10 OF 74		
STATE OF VERMONT AGENCY OF TRANSPORTATION		
TOWN OF DANVILLE		(10A)
PROJECT: DANVILLE F 028-3(2)		
APPROX. SCALE 1"=50'	DATE 4-18-83	DRAWN BY D.E.M.

EXCAVATION AND REMOVAL OF ROAD SURFACES ON ROADWAYS - ITEM 118-A
146+00 - 149+25 - LT. 148+50

14A RAYMOND R & MARTHA S SEVIGNY
(A.O. 574) STA 149+71-157+30
W.D.E. 2/21/59
RECORDED DANVILLE BK 43 PG 240 2/26/59

CONSTRUCT DRIVES	
153+18.5	LT.
154+82	LT.
157+83	LT.
158+80	LT.
160+28	LT.
161+67	LT.
155+00	RT.
147+90	LT.

THREE CABLE GUARD RAIL MUCK EXCAVATION 154+75 to 156+75
WITH STEEL POSTS
LT. 4L 149+50. RT. 148+19 - 150+50
LT. 4 RT. 147+58 - 144+00
150+13 - 150+25.52
158+04 - 158+52

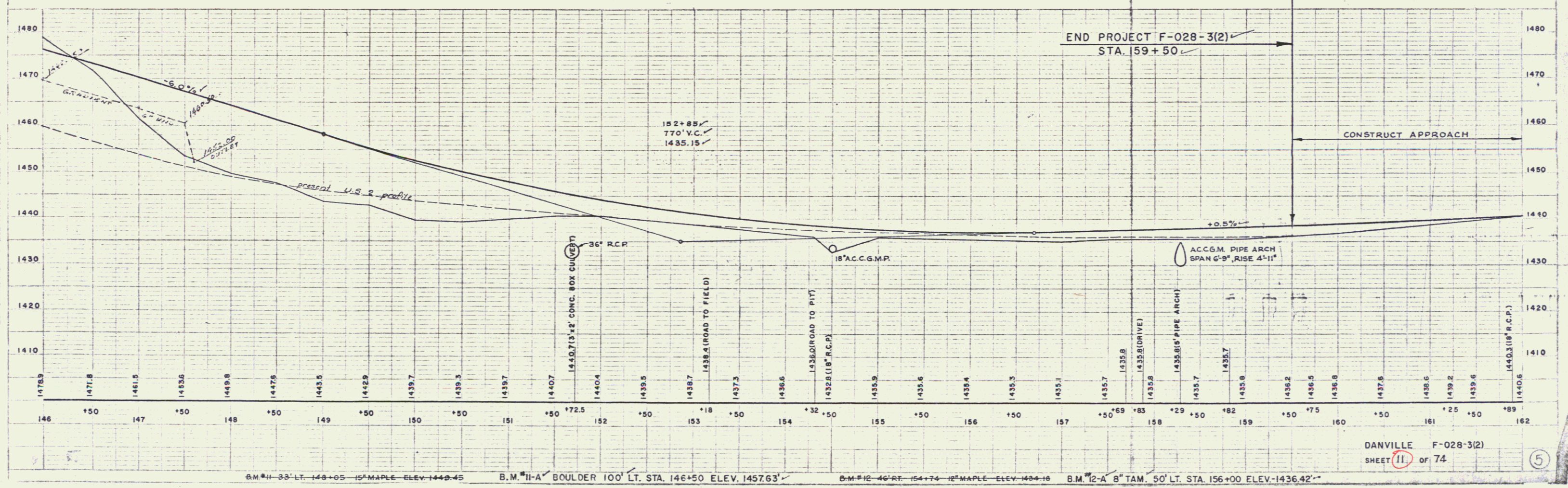
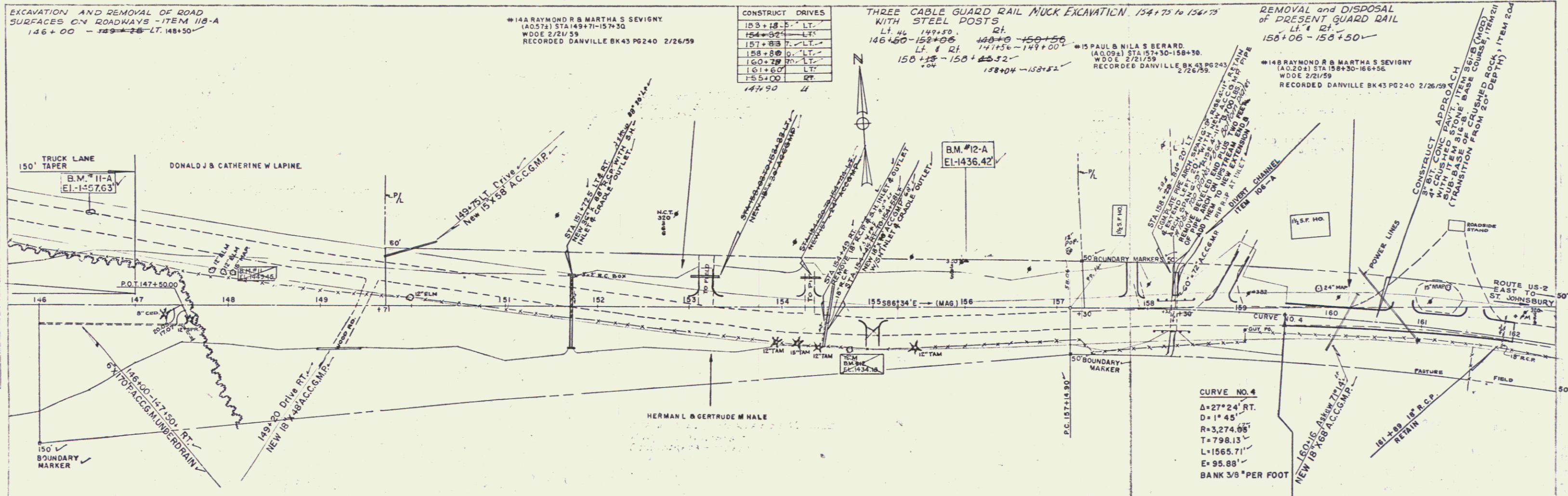
REMOVAL AND DISPOSAL OF PRESENT GUARD RAIL
LT. 4 RT. 158+06 - 158+50

15 PAUL & NILA S BERARD
(A.O. 094) STA 157+30-158+30
W.D.E. 2/21/59
RECORDED DANVILLE BK 43 PG 243 2/26/59

14B RAYMOND R & MARTHA S SEVIGNY
(A.O. 241) STA 158+30-161+50
W.D.E. 2/21/59
RECORDED DANVILLE BK 43 PG 240 2/26/59

VT. HIGHWAYS DEPT. 5-58
DIVISION OF HIGHWAYS
PLANNING & DESIGN SECTION 5-58

VT. HIGHWAYS DEPT. 5-58
DIVISION OF HIGHWAYS
PLANNING & DESIGN SECTION 5-58



B.M. #11-33 LT. 146+05 - 12" MAPLE - ELEV. 1440.45

B.M. #11-A BOULDER 100' LT. STA. 146+50 ELEV. 1457.63

B.M. #12-46 RT. 154+74 - 12" MAPLE - ELEV. 1484.10

B.M. #12-A 8" TAM. 50' LT. STA. 156+00 ELEV. 1436.42

DANVILLE F-028-3(2)
SHEET 11 of 74

5