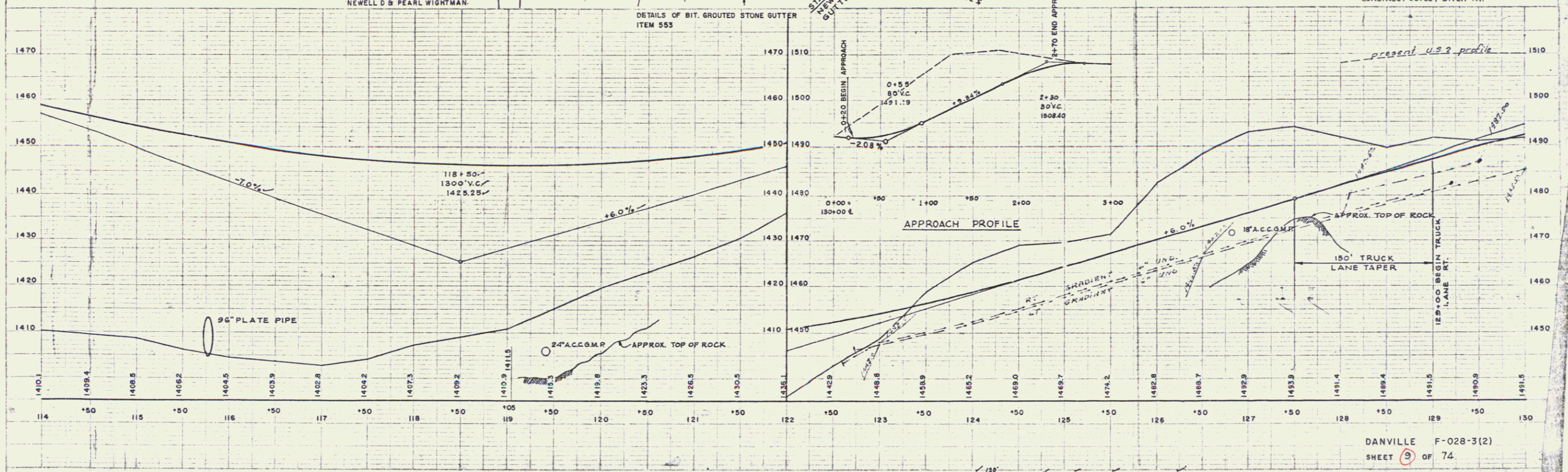
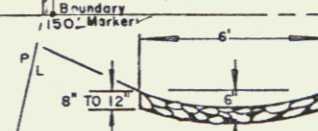


CURVE NO.3
 $\Delta = 4^\circ 46' LT.$
 $D = 0' 30'$
 $R = 11,459.16'$
 $T = 476.94'$
 $L = 953.20'$
 $E = 9.92'$
 BANK 1/4" PER FOOT

TURNING MOVEMENT DIAGRAM
 SHOWING 1980 30th PEAK HOUR VOLUME



DETAILS OF BIT. GROUTED STONE GUTTER
 ITEM 553



5