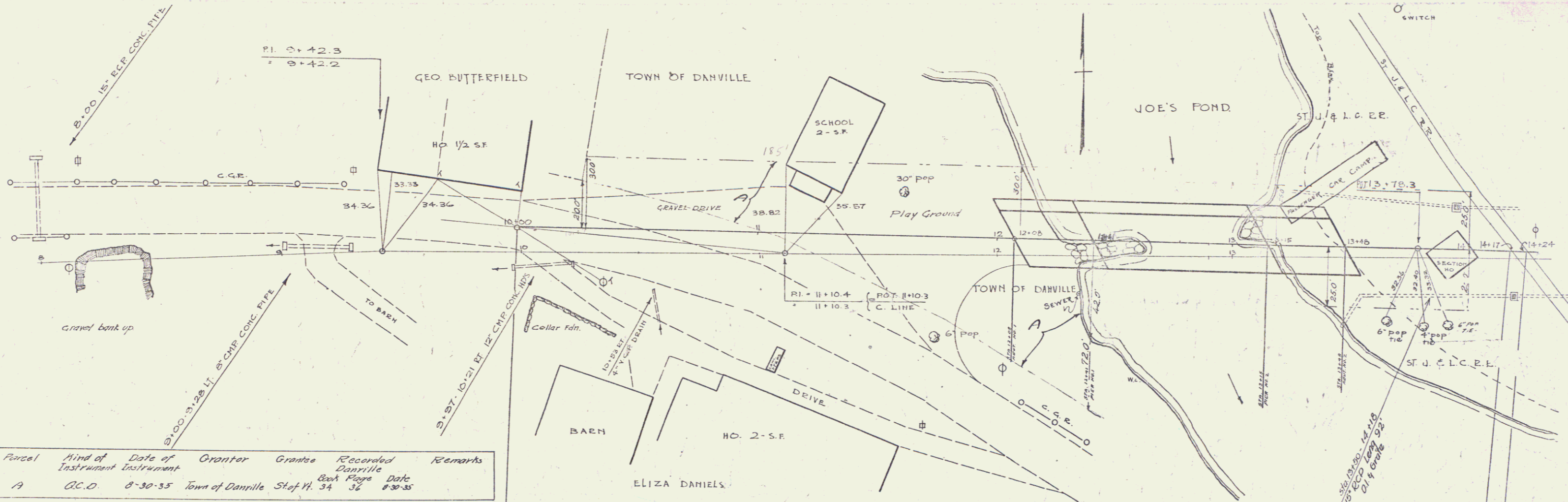


BUTNAM  
D. MACCHI  
D. MACCHI



Parcel	Kind of Instrument	Date of Instrument	Grantor	Grantee	Recorded Danville Book Page	Remarks
A	G.C.O.	8-30-35	Town of Danville	Stef V. 34	36	8:30:35

NOTE: IF DIRECTED BY THE ENGINEER A TACK COAT OF CUT BACK ASPHALT P.C.I. 12 TO BE APPLIED AT THE RATE OF 1/2 GAL PER SQUARE YARD.

STA. 10+00  
BEGINNING OF PROJECT

120

120

WASH BORING DATA

BORING #1	BORING #2	BORING #3	BORING #4	BORING #5	BORING #6
100	101	102	103	104	105

ALL BORINGS TO BE CORRECT TO BE CORRECT

INDEX OF SHEETS

SHEET NO.	DESCRIPTION
1-2	PLAN & PROFILE
3	SUMMARY OF QUANTITIES SHEET
4	GENERAL NOTES SHEET
5	TYPICAL SECTION OF IMPROVEMENT
6	ABUTMENT & SIDEWALK DETAILS
7	PIER DETAILS
8	S.B. 10-10 ST. 10-15 - 2 SPANS @ 30'-1 SPAN @ 20'-30' OPEN-SIDEWALK
9	S.B. 10-10 - TYPICAL DETAILS
10	S.B. 10-11 - TYPICAL DETAILS
11	S.B. 10-12 - INDUSTRIAL RAIL
12	S.B. 10-11 - BARRICADES, DETOURS ETC.
13	S.M. 29 - STANDARD STRUCTURES
14	S.M. 30 - STANDARD STRUCTURES
15	SCHOOL HOUSE - LOCATION PLAN
16	SCHOOL HOUSE - FOUNDATION DETAILS
17-22	CROSS SECTIONS
23	GRADE CROSSING DETAILS
24	STANDARD STRUCTURES - SERIES S.M. 31

NOTE: ALL STRUCTURE ON CHANNEL EXCAVATION REMOVING ANY PART OF THE OLD DAM SHALL BE REPLACED TO THE NEAR LINES OF CONCRETE AT ITS ORIGINAL ELEVATION AND IN AS GOOD CONDITION AS AT PRESENT.

PAINT - SWEEP COAT OF PAINT SHALL BE OMITTED. 2" FIELD COATS OF "HORN BALMITE" AS MANUFACTURED BY THE A.E. HORN CO., 43-36 TENTH ST., LONG ISLAND CITY, N.Y. SHALL BE APPLIED AS DIRECTED BY THE ENGINEER AFTER THE FLOOR HAS BEEN FINISHED.

Correct  
A.D. J. J. J.  
Bridges Engineer  
Approved June 27, 1935  
H. E. Jergent  
Commissioner

MP 1.60-1.73

Plan # 99131

Page # 51 95L

DANVILLE  
95.6

RIGHT-OF-WAY DIVISION  
TOWN FILE

PERPETUAL

Rte US 2  
Town of Danville  
(To Be Returned To R.O.W. Division)

DANVILLE  
WEST DANVILLE RELOCATION

SHEET NO. 1 OF 23