

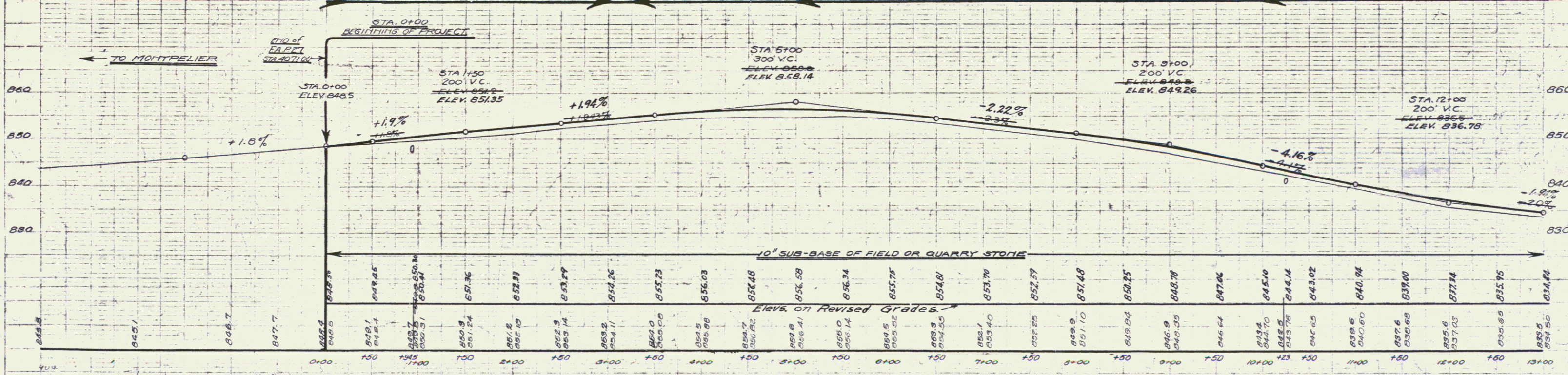
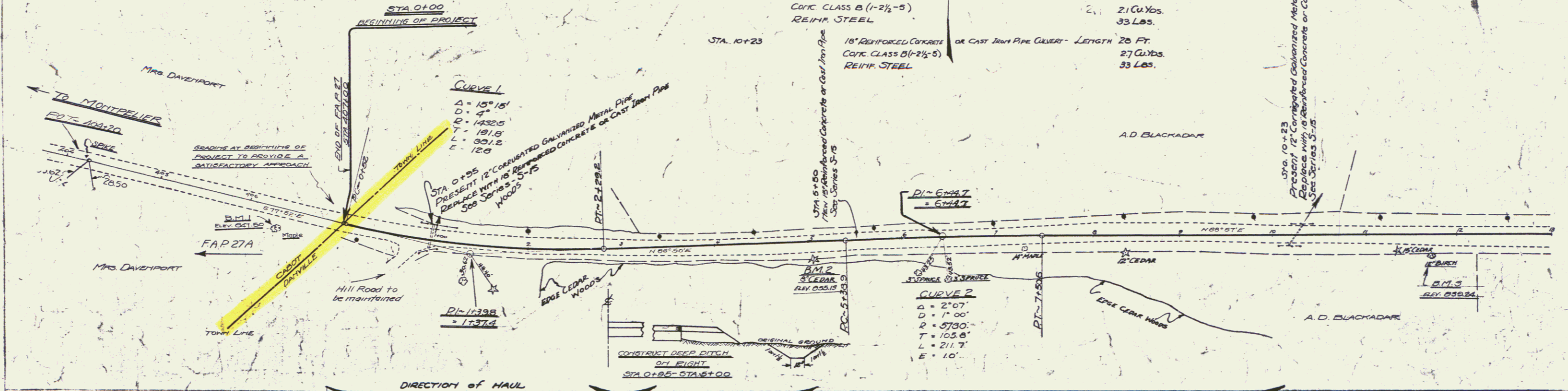
WOOD GUARD RAIL REQUIRED

STA 0+03 TO 1+07	(Left)	LENGTH 24 FT.
STA 5+38 TO 5+62		24 FT.
STA 10+15 TO 10+39	(Right)	24 FT.
STA 0+03 TO 1+07	(Right)	LENGTH 24 FT.
STA 5+38 TO 5+62		24 FT.
STA 10+17 TO 10+31		14 FT.
TOTAL REQ SHEET - 144 FT.		

NEW CULVERTS REQUIRED

STA. 0+95	18" REINF CONC. OR CAST IRON CONC. CLASS B (1-2 1/2 - 5) REINF. STEEL	PIPE CULVERT - LENGTH 20 FT.	27 CU.YDS.	33 LBS.
STA 5+50	15" REINFORCED CONCRETE OR CAST CONC. CLASS B (1-2 1/2 - 5) REINF. STEEL	IRON PIPE CULVERT - LENGTH 20 FT.	21 CU.YDS.	33 LBS.
STA. 10+23	18" REINFORCED CONCRETE OR CAST IRON CONC. CLASS B (1-2 1/2 - 5) REINF. STEEL	OR CAST IRON PIPE CULVERT - LENGTH 20 FT.	27 CU.YDS.	33 LBS.

FED. ROAD DIST. NO.	STATE	FED. AID PROJ. NO.	FISCAL YEAR	SHEET NO.	TOTAL SHEETS
111	VT.	65A	1953	3	36



D.M.1 - Spike in Maple at Sta 406+30 - ELEV. 847.90
 D.M.2 - Spike in 10' Cedar right of Sta 51+04 - ELEV. 855.13
 D.M.3 - Spike in 12' Birch right of Sta 114+70 - ELEV. 836.24

WOOD GUARD RAIL REQUIRED

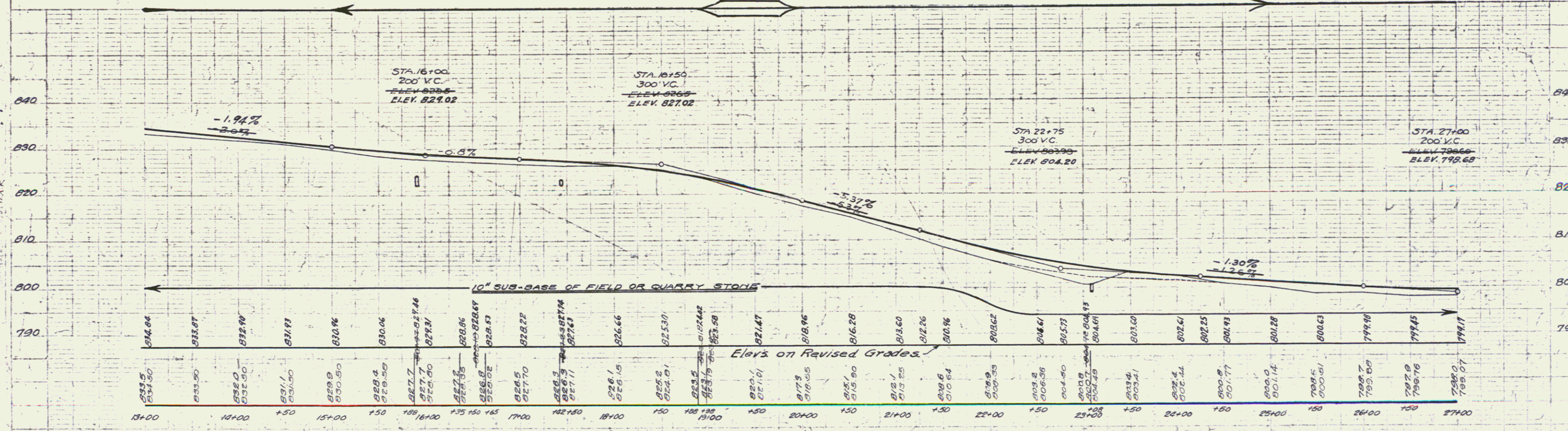
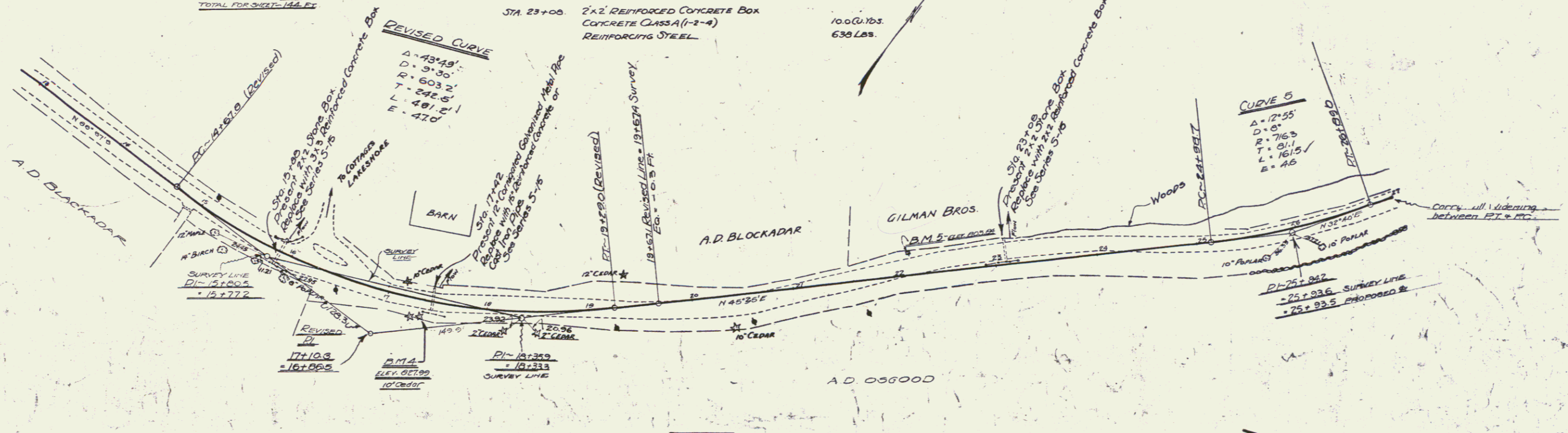
STA. 15+76 TO 16+00	LENGTH 24 FT.
STA. 17+30 TO 17+54	24 FT.
STA. 22+96 TO 23+20	24 FT.
(LEFT)	
STA. 15+76 TO 16+00	LENGTH 24 FT.
STA. 17+30 TO 17+54	24 FT.
STA. 22+96 TO 23+20	24 FT.
TOTAL FOR GUARD RAIL	

CABLE GUARD RAIL REQUIRED

STA. 24+00 TO 27+00	LENGTH 280 FT.
---------------------	----------------

NEW CULVERTS REQUIRED

STA. 15+00	3x3' REINFORCED CONCRETE BOX	47 Cu Yds
	CONCRETE CLASS A (1-2-4)	957 Lbs.
	REINFORCING STEEL	
STA. 17+42	15' REINFORCED CONCRETE OR CAST IRON PIPE CULVERT - LENGTH 132 FT.	2.1 Cu Yds.
	CONCRETE CLASS B (1-2-5)	33 Lbs.
	REINFORCING STEEL	
STA. 23+00	2x2' REINFORCED CONCRETE BOX	10.0 Cu Yds.
	CONCRETE CLASS A (1-2-4)	638 Lbs.
	REINFORCING STEEL	



B.M. 4 - Spike in 10' Cedar right of Sta. 17+34 - elev 827.99
 B.M. 5 - Spike in Power Line Pole, left of Sta. 22+14 - elev 805.84

WOOD GUARD RAIL REQUIRED

STA 51+45 TO 57+69 (Left)	LENGTH 24 FT
STA 46+25 TO 46+75	40 FT
STA 45+09 TO 45+33	24 FT
STA 49+34 TO 49+38	4 FT
STA 52+40 TO 52+64	24 FT
STA 57+45 TO 57+69 (Right)	24 FT
TOTAL SHEET - 160 FT	

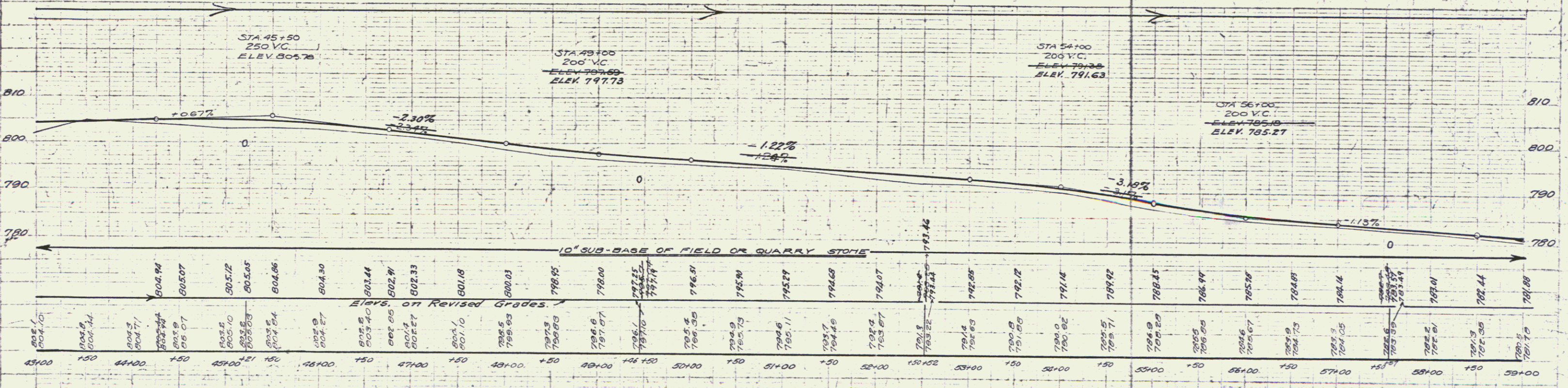
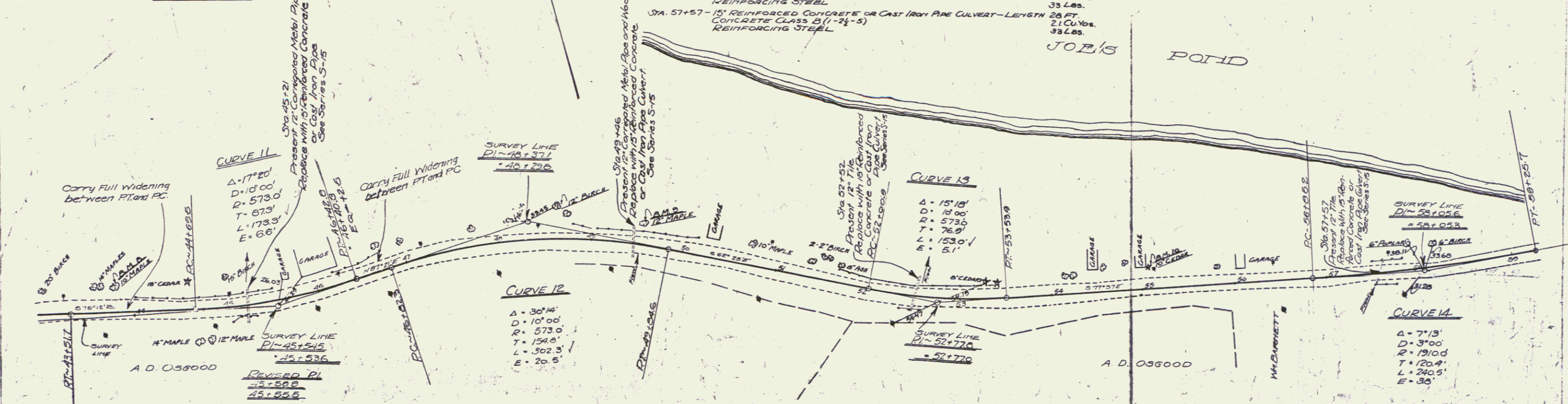
CABLE GUARD RAIL REQUIRED

STA 44+20 TO 45+40 - LENGTH 120 FT
STA 48+70 TO 49+02 - 32 FT
STA 51+92 TO 53+00 - 108 FT
TOTAL FOR SHEET - 400 FT

NEW CULVERTS REQUIRED

STA 45+21 - 15' REINFORCED CONCRETE OR CAST IRON PIPE CULVERT - LENGTH 44 FT	CONCRETE CLASS B (1-2 1/2"-5)	21 Cu Yds.
	REINFORCING STEEL	33 Lbs.
STA 49+45 - 15' REINFORCED CONCRETE OR CAST IRON PIPE CULVERT - LENGTH 36 FT	CONCRETE CLASS B (1-2 1/2"-5)	21 Cu Yds.
	REINFORCING STEEL	33 Lbs.
STA 52+52 - 15' REINFORCED CONCRETE OR CAST IRON PIPE CULVERT - LENGTH 44 FT	CONCRETE CLASS B (1-2 1/2"-5)	27 Cu Yds.
	REINFORCING STEEL	33 Lbs.
STA 57+57 - 15' REINFORCED CONCRETE OR CAST IRON PIPE CULVERT - LENGTH 28 FT	CONCRETE CLASS B (1-2 1/2"-5)	21 Cu Yds.
	REINFORCING STEEL	33 Lbs.

FED. ROAD DIST. NO.	STATE	FED. AID PROJ. NO.	FISCAL YEAR	SHEET NO.	TOTAL SHEETS
8	VI.	52A	1927	6	56



Elevs. on Revised Grades

Station	Elevation
43+00	805.10
43+10	804.94
43+20	804.77
43+30	804.60
43+40	804.44
43+50	804.27
43+60	804.10
43+70	803.94
43+80	803.77
43+90	803.60
44+00	803.44
44+10	803.27
44+20	803.10
44+30	802.94
44+40	802.77
44+50	802.60
44+60	802.44
44+70	802.27
44+80	802.10
44+90	801.94
45+00	801.77
45+10	801.60
45+20	801.44
45+30	801.27
45+40	801.10
45+50	800.94
45+60	800.77
45+70	800.60
45+80	800.44
45+90	800.27
46+00	800.10
46+10	799.94
46+20	799.77
46+30	799.60
46+40	799.44
46+50	799.27
46+60	799.10
46+70	798.94
46+80	798.77
46+90	798.60
47+00	798.44
47+10	798.27
47+20	798.10
47+30	797.94
47+40	797.77
47+50	797.60
47+60	797.44
47+70	797.27
47+80	797.10
47+90	796.94
48+00	796.77
48+10	796.60
48+20	796.44
48+30	796.27
48+40	796.10
48+50	795.94
48+60	795.77
48+70	795.60
48+80	795.44
48+90	795.27
49+00	795.10
49+10	794.94
49+20	794.77
49+30	794.60
49+40	794.44
49+50	794.27
49+60	794.10
49+70	793.94
49+80	793.77
49+90	793.60
50+00	793.44
50+10	793.27
50+20	793.10
50+30	792.94
50+40	792.77
50+50	792.60
50+60	792.44
50+70	792.27
50+80	792.10
50+90	791.94
51+00	791.77
51+10	791.60
51+20	791.44
51+30	791.27
51+40	791.10
51+50	790.94
51+60	790.77
51+70	790.60
51+80	790.44
51+90	790.27
52+00	790.10
52+10	789.94
52+20	789.77
52+30	789.60
52+40	789.44
52+50	789.27
52+60	789.10
52+70	788.94
52+80	788.77
52+90	788.60
53+00	788.44
53+10	788.27
53+20	788.10
53+30	787.94
53+40	787.77
53+50	787.60
53+60	787.44
53+70	787.27
53+80	787.10
53+90	786.94
54+00	786.77
54+10	786.60
54+20	786.44
54+30	786.27
54+40	786.10
54+50	785.94
54+60	785.77
54+70	785.60
54+80	785.44
54+90	785.27
55+00	785.10
55+10	784.94
55+20	784.77
55+30	784.60
55+40	784.44
55+50	784.27
55+60	784.10
55+70	783.94
55+80	783.77
55+90	783.60
56+00	783.44
56+10	783.27
56+20	783.10
56+30	782.94
56+40	782.77
56+50	782.60
56+60	782.44
56+70	782.27
56+80	782.10
56+90	781.94
57+00	781.77
57+10	781.60
57+20	781.44
57+30	781.27
57+40	781.10
57+50	780.94
57+60	780.77
57+70	780.60
57+80	780.44
57+90	780.27
58+00	780.10
58+10	779.94
58+20	779.77
58+30	779.60
58+40	779.44
58+50	779.27
58+60	779.10
58+70	778.94
58+80	778.77
58+90	778.60
59+00	778.44

B.M. 6 - Spike in 10' Maple left of Sta. 43+61 - elev. 805.84
 B.M. 9 - Spike in 14' Maple left of Sta. 45+83 - elev. 786.95
 B.M. 10 - Spike in 10' Cedar left of Sta. 55+05 - elev. 787.75

WOOD GUARD RAIL REQUIRED

STA	TO	LENGTH
64+09	64+33	24 FT
65+06	65+22	16 FT
70+04	71+08	24 FT
72+31	72+55	24 FT
TOTAL - 88 FT		

CABLE GUARD RAIL REQUIRED

STA	TO	LENGTH
59+00	60+04	104 FT
71+00	75+00	40 FT
TOTAL FOR SHEET - 144 FT		

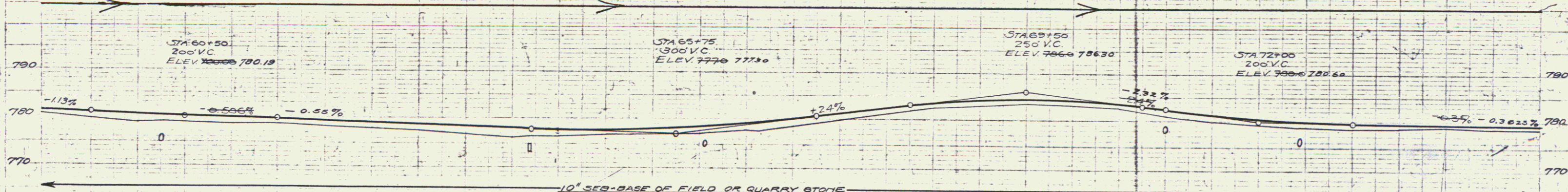
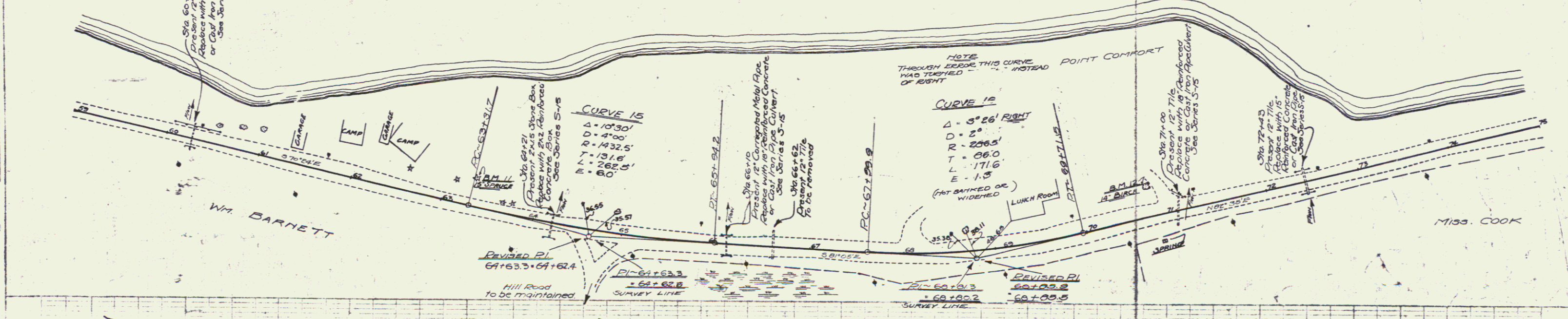
NEW CULVERTS REQUIRED

STA. 60+25 - 15' REINFORCED CONCRETE OR CAST IRON PIPE - LENGTH 39 FT.	21 CUB. YDS.
CONCRETE CLASS B (1-2 1/2-5)	33 LBS.
REINFORCING STEEL	
STA. 64+21 - 24" REINFORCED CONCRETE BOX	96 CUB. YDS.
CONCRETE CLASS A (1-2-4)	693 LBS.
REINFORCING STEEL	

NEW CULVERTS REQUIRED

STA. 66+10 - 15' REINFORCED CONCRETE OR CAST IRON PIPE - LENGTH 29 FT.	27 CUB. YDS.
CONCRETE CLASS B (1-2 1/2-5)	33 LBS.
REINFORCING STEEL	
STA. 71+00 - 15' REINFORCED CONCRETE OR CAST IRON PIPE - LENGTH 36 FT.	27 CUB. YDS.
CONCRETE CLASS B (1-2 1/2-5)	33 LBS.
REINFORCING STEEL	
STA. 72+43 - 15' REINFORCED CONCRETE OR CAST IRON PIPE - LENGTH 23 FT.	21 CUB. YDS.
CONCRETE CLASS B (1-2 1/2-5)	33 LBS.
REINFORCING STEEL	

FED. ROAD DIST. NO.	STATE	FED. AID PROJ. NO.	FISCAL YEAR	SHEET NO.	TOTAL SHEETS
1	VT.	95A11927	7	56	

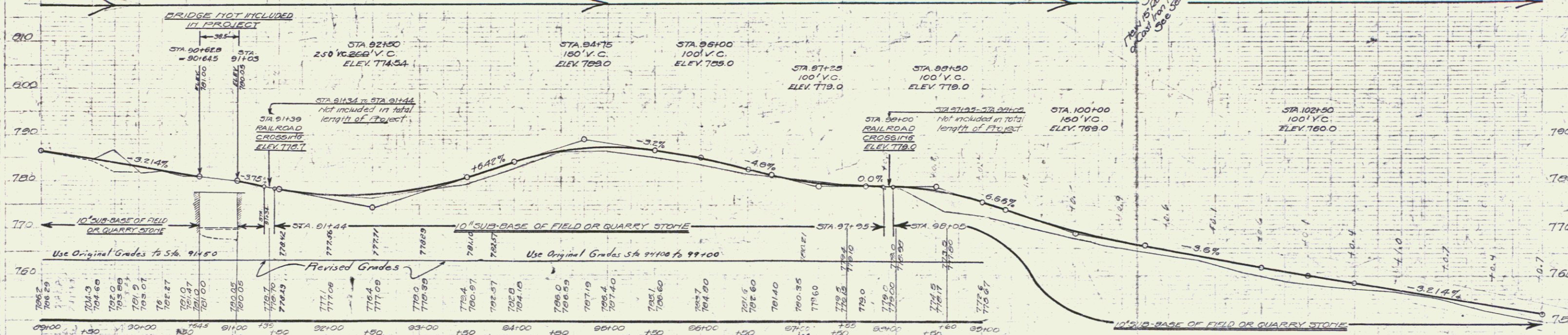
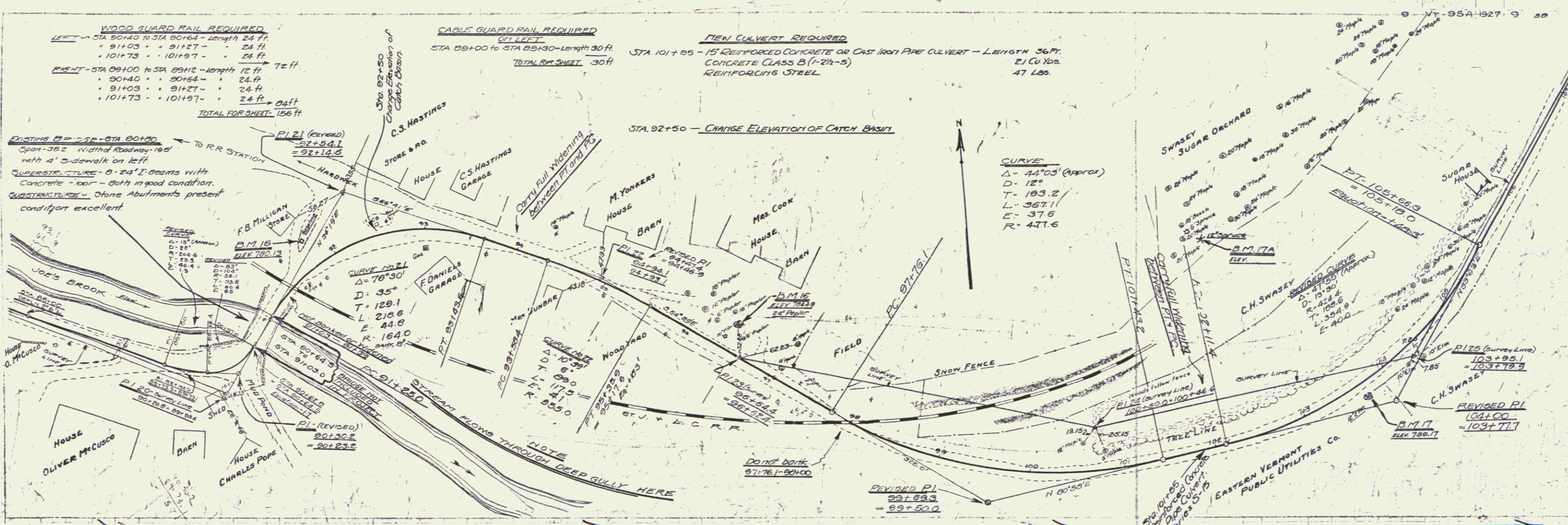


Station	Elevation
59+00	781.38
59+50	779.7
60+00	780.77
60+25	779.0
60+50	778.9
61+00	778.7
61+50	778.6
62+00	778.4
62+50	778.3
63+00	778.2
63+50	778.1
64+00	778.0
64+25	777.9
64+50	777.8
65+00	777.7
65+25	777.6
65+50	777.5
66+00	777.4
66+25	777.3
66+50	777.2
67+00	777.1
67+25	777.0
67+50	776.9
68+00	776.8
68+25	776.7
68+50	776.6
69+00	776.5
69+25	776.4
69+50	776.3
70+00	776.2
70+25	776.1
70+50	776.0
71+00	775.9
71+25	775.8
71+50	775.7
72+00	775.6
72+25	775.5
72+50	775.4
73+00	775.3
73+25	775.2
73+50	775.1
74+00	775.0
74+25	774.9
74+50	774.8
75+00	774.7

ELL - Spike in 15" Spruce left of sta 63+30 - elev 779.35
 BLIR - Spike in 14" Birch left of sta 70+73 - elev 781.83

WOOD GUARD RAIL REQUIRED
(WEIGHT)

STA	TO	LENGTH 24 FT.
75+95	76+22	27
76+22	76+52	30
76+52	77+00	48
77+00	77+26	26
77+26	77+50	24
77+50	78+00	50
78+00	78+26	26
78+26	78+50	24
78+50	79+00	50
79+00	79+26	26
79+26	79+50	24
79+50	80+00	50
80+00	80+26	26
80+26	80+50	24
80+50	81+00	50
81+00	81+26	26
81+26	81+50	24
81+50	82+00	50
82+00	82+26	26
82+26	82+50	24
82+50	83+00	50
83+00	83+26	26
83+26	83+50	24
83+50	84+00	50
84+00	84+26	26
84+26	84+50	24
84+50	85+00	50
85+00	85+26	26
85+26	85+50	24
85+50	86+00	50
86+00	86+26	26
86+26	86+50	24
86+50	87+00	50
87+00	87+26	26
87+26	87+50	24
87+50	88+00	50
88+00	88+26	26
88+26	88+50	24
88+50	89+00	50
89+00	89+26	26
89+26	89+50	24
89+50	90+00	50
90+00	90+26	26
90+26	90+50	24
90+50	91+00	50
91+00	91+26	26
91+26	91+50	24
91+50	92+00	50
92+00	92+26	26
92+26	92+50	24
92+50	93+00	50
93+00	93+26	26
93+26	93+50	24
93+50	94+00	50
94+00	94+26	26
94+26	94+50	24
94+50	95+00	50
95+00	95+26	26
95+26	95+50	24
95+50	96+00	50
96+00	96+26	26
96+26	96+50	24
96+50	97+00	50
97+00	97+26	26
97+26	97+50	24
97+50	98+00	50
98+00	98+26	26
98+26	98+50	24
98+50	99+00	50
99+00	99+26	26
99+26	99+50	24
99+50	100+00	50
100+00	100+26	26
100+26	100+50	24
100+50	101+00	50
101+00	101+26	26
101+26	101+50	24
101+50	102+00	50
102+00	102+26	26
102+26	102+50	24
102+50	103+00	50
103+00	103+26	26
103+26	103+50	24
103+50	104+00	50
104+00	104+26	26
104+26	104+50	24
104+50	105+00	50
105+00	105+26	26
105+26	105+50	24
105+50	106+00	50
106+00	106+26	26
106+26	106+50	24
106+50	107+00	50
107+00	107+26	26
107+26	107+50	24
107+50	108+00	50
108+00	108+26	26
108+26	108+50	24
108+50	109+00	50
109+00	109+26	26
109+26	109+50	24
109+50	110+00	50
110+00	110+26	26
110+26	110+50	24
110+50	111+00	50
111+00	111+26	26
111+26	111+50	24
111+50	112+00	50
112+00	112+26	26
112+26	112+50	24
112+50	113+00	50
113+00	113+26	26
113+26	113+50	24
113+50	114+00	50
114+00	114+26	26
114+26	114+50	24
114+50	115+00	50
115+00	115+26	26
115+26	115+50	24
115+50	116+00	50
116+00	116+26	26
116+26	116+50	24
116+50	117+00	50
117+00	117+26	26
117+26	117+50	24
117+50	118+00	50
118+00	118+26	26
118+26	118+50	24
118+50	119+00	50
119+00	119+26	26
119+26	119+50	24
119+50	120+00	50
120+00	120+26	26
120+26	120+50	24
120+50	121+00	50
121+00	121+26	26
121+26	121+50	24
121+50	122+00	50
122+00	122+26	26
122+26	122+50	24
122+50	123+00	50
123+00	123+26	26
123+26	123+50	24
123+50	124+00	50
124+00	124+26	26
124+26	124+50	24
124+50	125+00	50
125+00	125+26	26
125+26	125+50	24
125+50	126+00	50
126+00	126+26	26
126+26	126+50	24
126+50	127+00	50
127+00	127+26	26
127+26	127+50	24
127+50	128+00	50
128+00	128+26	26
128+26	128+50	24
128+50	129+00	50
129+00	129+26	26
129+26	129+50	24
129+50	130+00	50
130+00	130+26	26
130+26	130+50	24
130+50	131+00	50
131+00	131+26	26
131+26	131+50	24
131+50	132+00	50
132+00	132+26	26
132+26	132+50	24
132+50	133+00	50
133+00	133+26	26
133+26	133+50	24
133+50	134+00	50
134+00	134+26	26
134+26	134+50	24
134+50	135+00	50
135+00	135+26	26
135+26	135+50	24
135+50	136+00	50
136+00	136+26	26
136+26	136+50	24
136+50	137+00	50
137+00	137+26	26
137+26	137+50	24
137+50	138+00	50
138+00	138+26	26
138+26	138+50	24
138+50	139+00	50
139+00	139+26	26
139+26	139+50	24
139+50	140+00	50
140+00	140+26	26
140+26	140+50	24
140+50	141+00	50
141+00	141+26	26
141+26	141+50	24
141+50	142+00	50
142+00	142+26	26
142+26	142+50	24
142+50	143+00	50
143+00	143+26	26
143+26	143+50	24
143+50	144+00	50
144+00	144+26	26
144+26	144+50	24
144+50	145+00	50
145+00	145+26	26
145+26	145+50	24
145+50	146+00	50
146+00	146+26	26
146+26	146+50	24
146+50	147+00	50
147+00	147+26	26
147+26	147+50	24
147+50	148+00	50
148+00	148+26	26
148+26	148+50	24
148+50	149+00	50
149+00	149+26	26
149+26	149+50	24
149+50	150+00	50
150+00	150+26	26
150+26	150+50	24
150+50	151+00	50
151+00	151+26	26
151+26	151+50	24
151+50	152+00	50
152+00	152+26	26
152+26	152+50	24
152+50	153+00	50
153+00	153+26	26
153+26	153+50	24
153+50	154+00	50
154+00	154+26	26
154+26	154+50	24
154+50	155+00	50
155+00	155+26	26
155+26	155+50	24
155+50	156+00	50
156+00	156+26	26
156+26	156+50	24
156+50	157+00	50
157+00	157+26	26
157+26	157+50	24
157+50	158+00	50
158+00	158+26	26
158+26	158+50	24
158+50	159+00	50
159+00	159+26	26
159+26	159+50	24
159+50	160+00	50
160+00	160+26	26
160+26	160+50	24
160+50	161+00	50
161+00	161+26	26
161+26	161+50	24
161+50	162+00	50
162+00	162+26	26
162+26	162+50	24
162+50	163+00	50
163+00	163+26	26
163+26	163+50	24
163+50	164+00	50
164+00	164+26	26
164+26	164+50	24
164+50	165+00	50
165+00	165+26	26
165+26	165+50	24
165+50	166+00	50
166+00	166+26	26
166+26	166+50	24
166+50	167+00	50
167+00	167+26	26
167+26	167+50	24
167+50	168+00	50
168+00	168+26	26
168+26	168+50	24
168+50	169+00	50
169+00	169+26	26
169+26	169+50	24
169+50	170+00	50
170+00	170+26	26
170+26	170+50	24
170+50	171+00	50
171+00	171+26	26
171+26	171+50	24
171+50	172+00	50
172+00	172+26	26
172+26	172+50	24
172+50	173+00	50
173+00	173+26	26
173+26	173+50	24
173+50	174+00	50
174+00	174+26	26
174+26	174+50	24
174+50	175+00	50
175+00	175+26	26
175+26	175+50	24
175+50	176+00	50
176+00	176+26	26
176+26	176+50	24
176+50	177+00	50
177+00	177+26	26
177+26	177+50	24
177+50	178+00	50
178+00	178+26	26
178+26	178+50	24
178+50	179+00	50
179+00	179+26	26
179+26	179+50	24
179+50	180+00	50
180+00	180+26	26
180+26	180+50	24
180+50	181+00	50
181+00	181+26	26
181+26	181+50	24
181+50	182+00	50
182+00	182+26	26
182+26	182+50	24
182+50	183+00	50
183+00	183+26	26
183+26	183+50	24
183+50	184+00	50
184+00	184+26	26
184+26	184+50	24
184+50	185+00	50
185+00	185+26	26
185+26	185+50	24
185+50	186+00	50
186+00	186+26	26
186+26	186+50	24
186+50	187+00	50
187+00	187+26	26
187+26	187+50	24
187+50	188+00	50
188+00	188+26	26
188+26	188+50	24
188+50	189+00	50
189+00	189+26	26
189+26	189+50	24
189+50	190+00	50
190+00	190+26	26
190+26	190+50	24
190+50	191+00	50
191+00	191+26	26
191+26	191+50	24
191+50	192+00	50
192+00	192+26	26
192+26	192+50	24
192+50	193+00	50
193+00	193+26	26
193+26	193+50	24
193+50	194+00	50
194+00	194+26	26
194+26	194+50	24
194+50	195+00	50
195+00	195+26	26
195+26	195+50	24
195+50	196+00	50
196+00	196+26	26
196+26	196+50	24
196+50	197+00	50
197+00	197+26	26
197+26	197+50	24
197+50	198+00	50



BM#15 N.E. Corner Concrete Base of Gas Pump
 Left Sta. 91+78 Elev. 780.13
BM#16 Spike in 24" Poplar Left Sta. 96+48 Elev. 784.49
BM#17 Spike in 12" Elm Right Sta. 103+31 Elev. 759.17
BM#17A Spike in 12" Spruce Right Sta. 101+94 " Elev.

90+00	90+10	90+20	90+30	90+40	90+50	90+60	90+70	90+80	90+90	91+00	91+10	91+20	91+30	91+40	91+50	91+60	91+70	91+80	91+90	92+00	92+10	92+20	92+30	92+40	92+50	92+60	92+70	92+80	92+90	93+00	93+10	93+20	93+30	93+40	93+50	93+60	93+70	93+80	93+90	94+00	94+10	94+20	94+30	94+40	94+50	94+60	94+70	94+80	94+90	95+00	95+10	95+20	95+30	95+40	95+50	95+60	95+70	95+80	95+90	96+00	96+10	96+20	96+30	96+40	96+50	96+60	96+70	96+80	96+90	97+00	97+10	97+20	97+30	97+40	97+50	97+60	97+70	97+80	97+90	98+00	98+10	98+20	98+30	98+40	98+50	98+60	98+70	98+80	98+90	99+00	99+10	99+20	99+30	99+40	99+50	99+60	99+70	99+80	99+90	100+00	100+10	100+20	100+30	100+40	100+50	100+60	100+70	100+80	100+90	101+00	101+10	101+20	101+30	101+40	101+50	101+60	101+70	101+80	101+90	102+00	102+10	102+20	102+30	102+40	102+50	102+60	102+70	102+80	102+90	103+00	103+10	103+20	103+30	103+40	103+50	103+60	103+70	103+80	103+90																																																																																																																																																																																																																																																																																																																																																																																																																																																																																																																																																											
796.5	796.8	797.1	797.4	797.7	798.0	798.3	798.6	798.9	799.2	799.5	799.8	800.1	800.4	800.7	801.0	801.3	801.6	801.9	802.2	802.5	802.8	803.1	803.4	803.7	804.0	804.3	804.6	804.9	805.2	805.5	805.8	806.1	806.4	806.7	807.0	807.3	807.6	807.9	808.2	808.5	808.8	809.1	809.4	809.7	810.0	810.3	810.6	810.9	811.2	811.5	811.8	812.1	812.4	812.7	813.0	813.3	813.6	813.9	814.2	814.5	814.8	815.1	815.4	815.7	816.0	816.3	816.6	816.9	817.2	817.5	817.8	818.1	818.4	818.7	819.0	819.3	819.6	819.9	820.2	820.5	820.8	821.1	821.4	821.7	822.0	822.3	822.6	822.9	823.2	823.5	823.8	824.1	824.4	824.7	825.0	825.3	825.6	825.9	826.2	826.5	826.8	827.1	827.4	827.7	828.0	828.3	828.6	828.9	829.2	829.5	829.8	830.1	830.4	830.7	831.0	831.3	831.6	831.9	832.2	832.5	832.8	833.1	833.4	833.7	834.0	834.3	834.6	834.9	835.2	835.5	835.8	836.1	836.4	836.7	837.0	837.3	837.6	837.9	838.2	838.5	838.8	839.1	839.4	839.7	840.0	840.3	840.6	840.9	841.2	841.5	841.8	842.1	842.4	842.7	843.0	843.3	843.6	843.9	844.2	844.5	844.8	845.1	845.4	845.7	846.0	846.3	846.6	846.9	847.2	847.5	847.8	848.1	848.4	848.7	849.0	849.3	849.6	849.9	850.2	850.5	850.8	851.1	851.4	851.7	852.0	852.3	852.6	852.9	853.2	853.5	853.8	854.1	854.4	854.7	855.0	855.3	855.6	855.9	856.2	856.5	856.8	857.1	857.4	857.7	858.0	858.3	858.6	858.9	859.2	859.5	859.8	860.1	860.4	860.7	861.0	861.3	861.6	861.9	862.2	862.5	862.8	863.1	863.4	863.7	864.0	864.3	864.6	864.9	865.2	865.5	865.8	866.1	866.4	866.7	867.0	867.3	867.6	867.9	868.2	868.5	868.8	869.1	869.4	869.7	870.0	870.3	870.6	870.9	871.2	871.5	871.8	872.1	872.4	872.7	873.0	873.3	873.6	873.9	874.2	874.5	874.8	875.1	875.4	875.7	876.0	876.3	876.6	876.9	877.2	877.5	877.8	878.1	878.4	878.7	879.0	879.3	879.6	879.9	880.2	880.5	880.8	881.1	881.4	881.7	882.0	882.3	882.6	882.9	883.2	883.5	883.8	884.1	884.4	884.7	885.0	885.3	885.6	885.9	886.2	886.5	886.8	887.1	887.4	887.7	888.0	888.3	888.6	888.9	889.2	889.5	889.8	890.1	890.4	890.7	891.0	891.3	891.6	891.9	892.2	892.5	892.8	893.1	893.4	893.7	894.0	894.3	894.6	894.9	895.2	895.5	895.8	896.1	896.4	896.7	897.0	897.3	897.6	897.9	898.2	898.5	898.8	899.1	899.4	899.7	900.0	900.3	900.6	900.9	901.2	901.5	901.8	902.1	902.4	902.7	903.0	903.3	903.6	903.9	904.2	904.5	904.8	905.1	905.4	905.7	906.0	906.3	906.6	906.9	907.2	907.5	907.8	908.1	908.4	908.7	909.0	909.3	909.6	909.9	910.2	910.5	910.8	911.1	911.4	911.7	912.0	912.3	912.6	912.9	913.2	913.5	913.8	914.1	914.4	914.7	915.0	915.3	915.6	915.9	916.2	916.5	916.8	917.1	917.4	917.7	918.0	918.3	918.6	918.9	919.2	919.5	919.8	920.1	920.4	920.7	921.0	921.3	921.6	921.9	922.2	922.5	922.8	923.1	923.4	923.7	924.0	924.3	924.6	924.9	925.2	925.5	925.8	926.1	926.4	926.7	927.0	927.3	927.6	927.9	928.2	928.5	928.8	929.1	929.4	929.7	930.0	930.3	930.6	930.9	931.2	931.5	931.8	932.1	932.4	932.7	933.0	933.3	933.6	933.9	934.2	934.5	934.8	935.1	935.4	935.7	936.0	936.3	936.6	936.9	937.2	937.5	937.8	938.1	938.4	938.7	939.0	939.3	939.6	939.9	940.2	940.5	940.8	941.1	941.4	941.7	942.0	942.3	942.6	942.9	943.2	943.5	943.8	944.1	944.4	944.7	945.0	945.3	945.6	945.9	946.2	946.5	946.8	947.1	947.4	947.7	948.0	948.3	948.6	948.9	949.2	949.5	949.8	950.1	950.4	950.7	951.0	951.3	951.6	951.9	952.2	952.5	952.8	953.1	953.4	953.7	954.0	954.3	954.6	954.9	955.2	955.5	955.8	956.1	956.4	956.7	957.0	957.3	957.6	957.9	958.2	958.5	958.8	959.1	959.4	959.7	960.0	960.3	960.6	960.9	961.2	961.5	961.8	962.1	962.4	962.7	963.0	963.3	963.6	963.9	964.2	964.5	964.8	965.1	965.4	965.7	966.0	966.3	966.6	966.9	967.2	967.5	967.8	968.1	968.4	968.7	969.0	969.3	969.6	969.9	970.2	970.5	970.8	971.1	971.4	971.7	972.0	972.3	972.6	972.9	973.2	973.5	973.8	974.1	974.4	974.7	975.0	975.3	975.6	975.9	976.2	976.5	976.8	977.1	977.4	977.7	978.0	978.3	978.6	978.9	979.2	979.5	979.8	980.1	980.4	980.7	981.0	981.3	981.6	981.9	982.2	982.5	982.8	983.1	983.4	983.7	984.0	984.3	984.6	984.9	985.2	985.5	985.8	986.1	986.4	986.7	987.0	987.3	987.6	987.9	988.2	988.5	988.8	989.1	989.4	989.7	990.0	990.3	990.6	990.9	991.2	991.5	991.8	992.1	992.4	992.7	993.0	993.3	993.6	993.9	994.2	994.5	994.8	995.1	995.4	995.7	996.0	996.3	996.6	996.9	997.2	997.5	997.8	998.1	998.4	998.7	999.0	999.3	999.6	1000.0

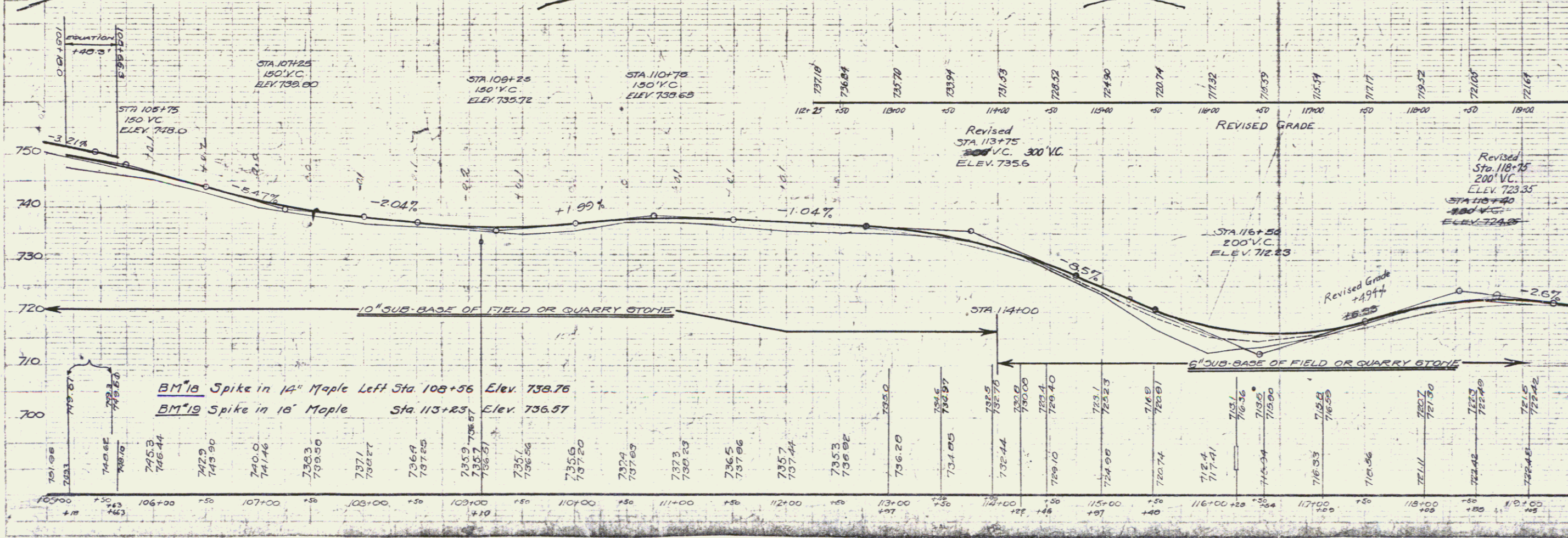
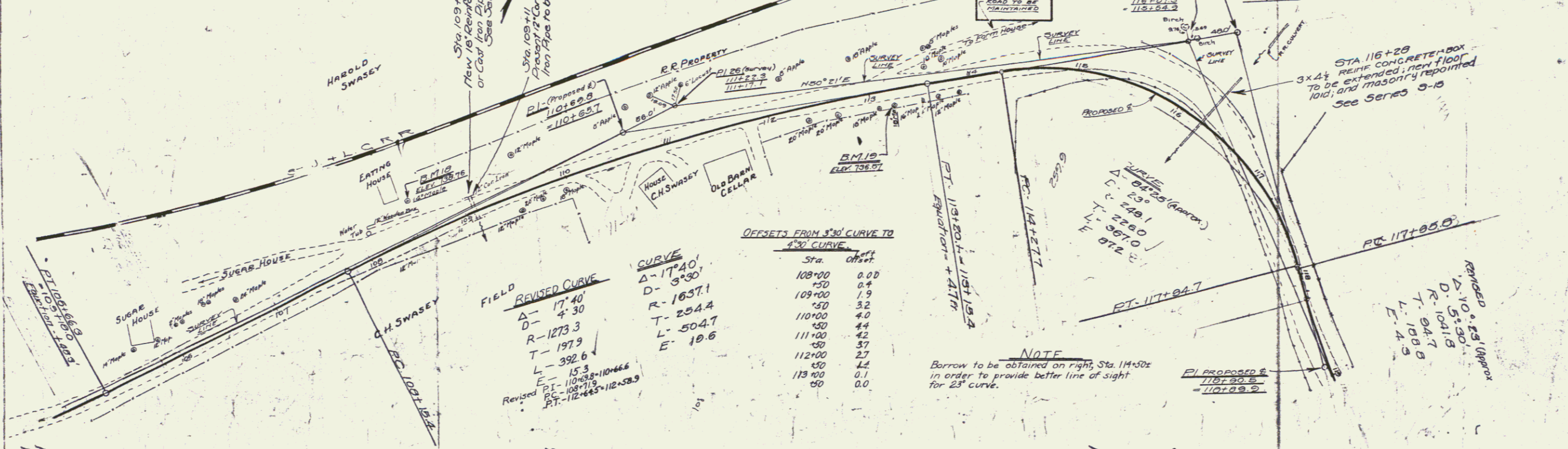
WOOD GUARD RAIL REQUIRED STA 108+98 TO 109+22--LENGTH 24 FT
 STA 116+13 TO 116+37-- 24 FT (LEFT) 40 FT
 STA 108+98 TO 109+22--LENGTH 24 FT (RIGHT)
 TOTAL FOR SHEET--TEFT

CABLE GUARD RAIL REQUIRED STA 115+25 TO 116+77--LENGTH 152 FT

NEW 18" REINFORCED CONCRETE OR CAST IRON PIPE CULVERT STA 109+10--LENGTH 28 FT. CONCRETE CLASS B (1-2-5) REINFORCING STEEL 27 CU YDS. 33 Lbs.

CULVERT REPAIRS REQUIRED STA 116+28--EXTENSION OF FLOOR CONCRETE CLASS A (1-2-4)--15 CUBS. REINF. STEEL W02T 100 REPOINTING MASONRY 117 sq yds.

FED. ROAD DIST. NO.	STATE	PROJECT NO.	SHEET NO.	TOTAL SHEETS
1	VI.	95A	1927	10



WOOD GUARD RAIL REQUIRED
 STA. 135+38 TO 135+62 (LEFT) LENGTH 24 FT.
 STA. 134+66 TO 135+62 (RIGHT) LENGTH 96 FT.
 TOTAL FOR SHEET 120 FT.

NEW CULVERT REQUIRED
 STA. 135+50 - 18" REINFORCED CONCRETE & CAST IRON PIPE CULVERT - LENGTH 32 FT.
 CONCRETE CLASS B (1-2 1/2") 2.7 CU. Yds.
 REINFORCING STEEL 53 Lbs.

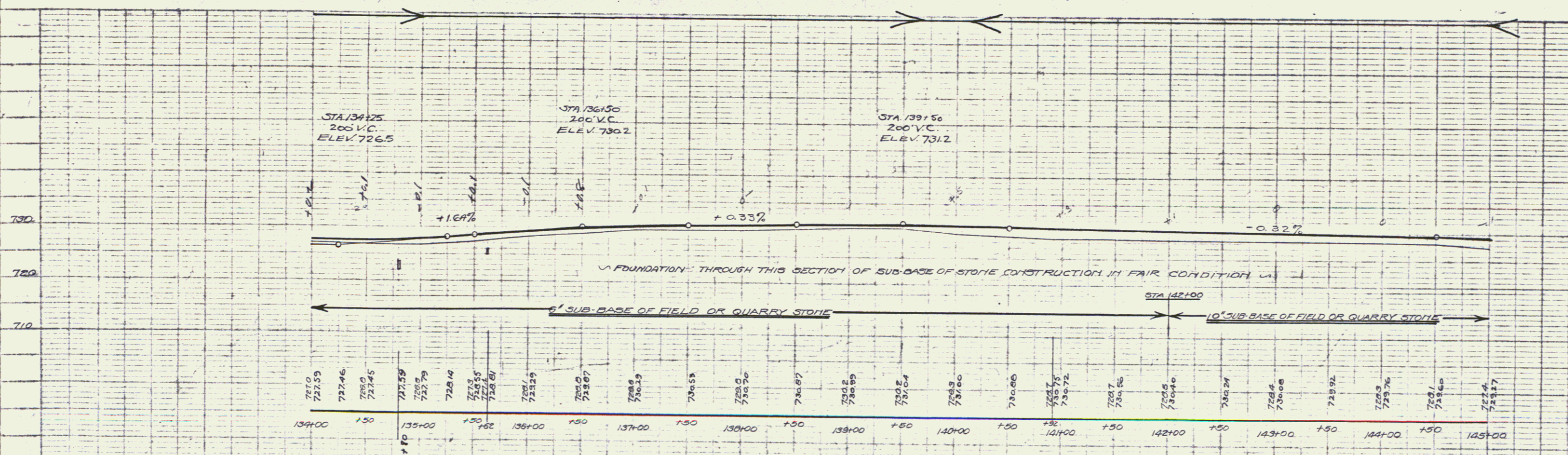
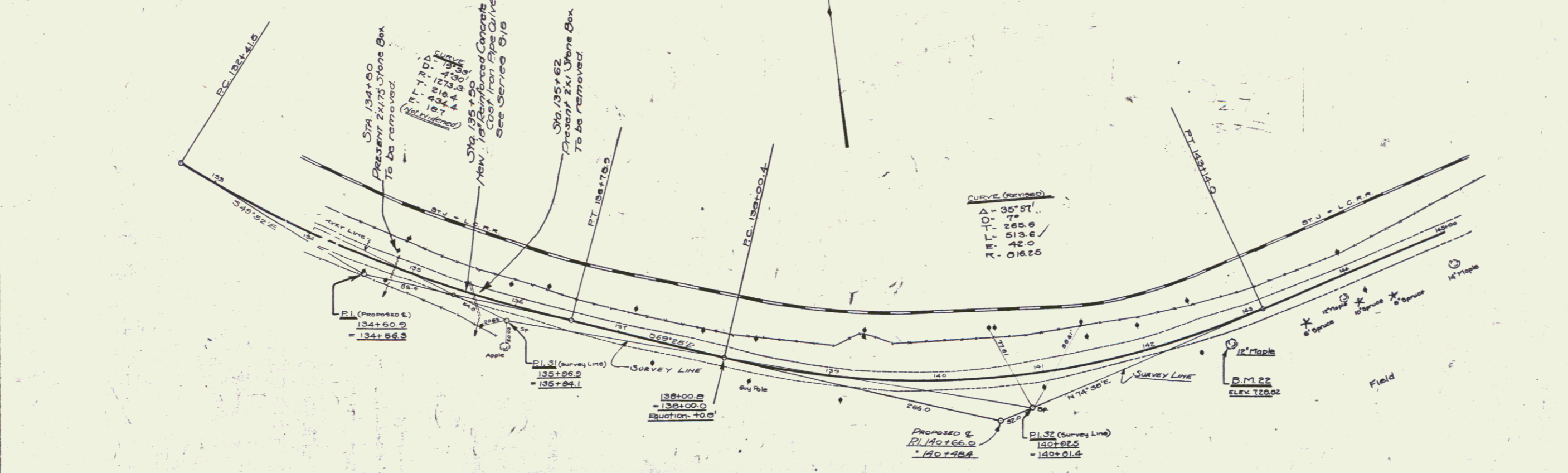
FED. ROAD DIST. NO.	STATE	FED. AID PROJ. NO.	FISC. YEAR	SHEET NO.	TOTAL SHEETS
9	VI.	99A	1927	12	50

PLAN

DESIGNED BY	A. J. RICHMOND
CHECKED BY	A. J. RICHMOND
DATE	APR 11 1927
BY	APR 11 1927

PROFILE

DESIGNED BY	A. J. RICHMOND
CHECKED BY	A. J. RICHMOND
DATE	APR 11 1927
BY	APR 11 1927



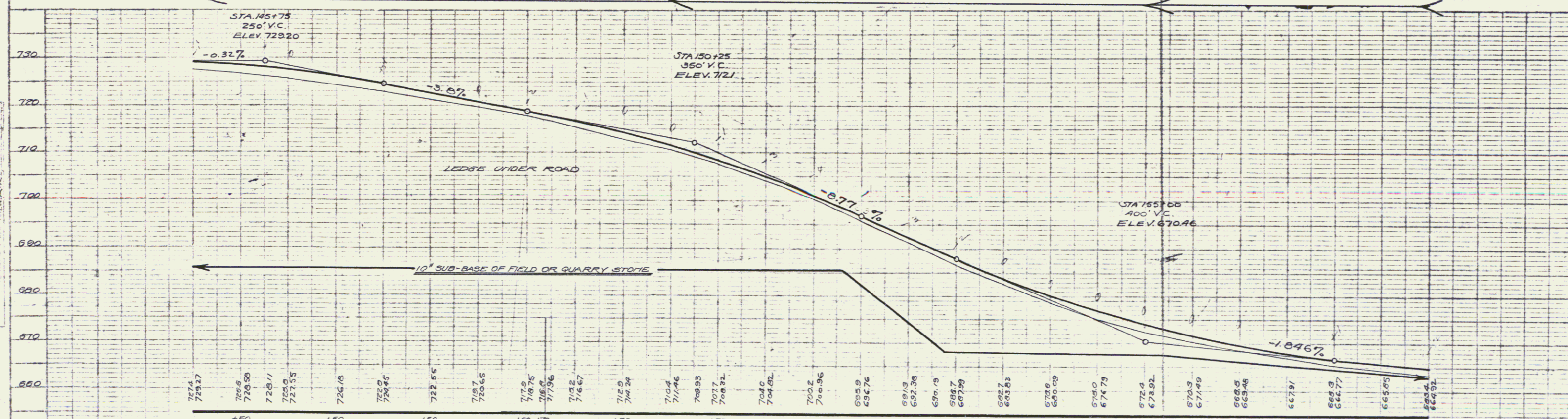
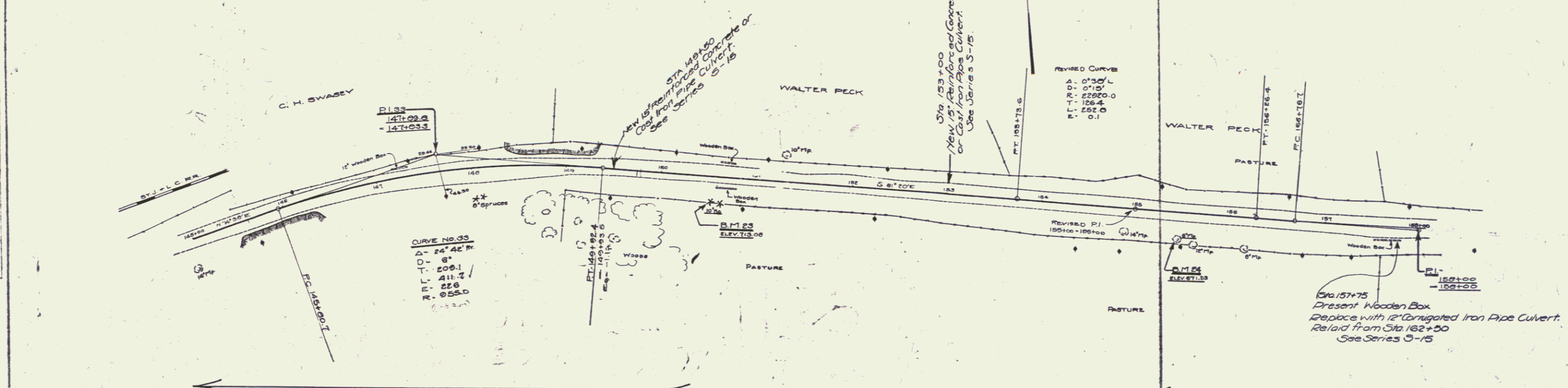
SERIES F 710 95A
 SHEET 12 OF 50 SHEETS

WOOD GUARD RAIL REQUIRED
 STA. 149+35 TO 149+62 LENGTH 24 FT.
 STA. 152+00 TO 153+12 (LEFT) 24 FT. 40 FT.
 STA. 149+30 TO 149+62 LENGTH 24 FT.
 STA. 152+00 TO 153+12 (RIGHT) 24 FT. 40 FT.
 TOTAL WOOD GUARD RAIL 96 FT.

NEW CULVERTS REQUIRED
 STA. 149+50 - 15' REINFORCED CONCRETE OR CAST IRON PIPE CULVERT - LENGTH 32 FT.
 CONCRETE CLASS B (1-2 1/2-5) 2.1 CU. YDS.
 REINFORCING STEEL 33 LBS.
 STA. 153+00 - 15' REINFORCED CONCRETE OR CAST IRON PIPE CULVERT - LENGTH 40 FT.
 CONCRETE CLASS B (1-2 1/2-5) 2.1 CU. YDS.
 REINFORCING STEEL 33 LBS.

NEW CULVERTS REQUIRED FOR DOWNSLAWS
 STA. 157+75 ± 12" CORRUGATED IRON PIPE - LENGTH 20 FT. (on right)

NO.	DATE	BY	REVISION
1	VI. 1927		



B.M. 22 - Spike in 10' spruce right of Sta 150+33 - elev. 713.00
 B.M. 24 - Spike in 8" maple right of Sta 151+43 - elev. 671.23

SERIES F-110 25A
 SHEET 13 OF 50

WOOD GUARD RAIL REQUIRED

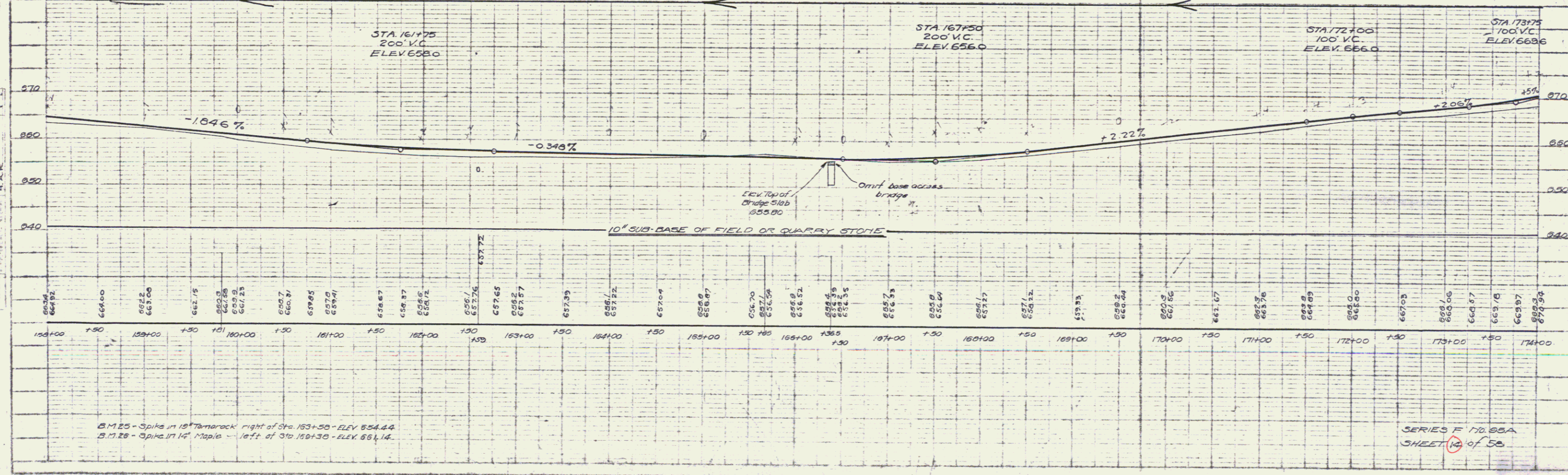
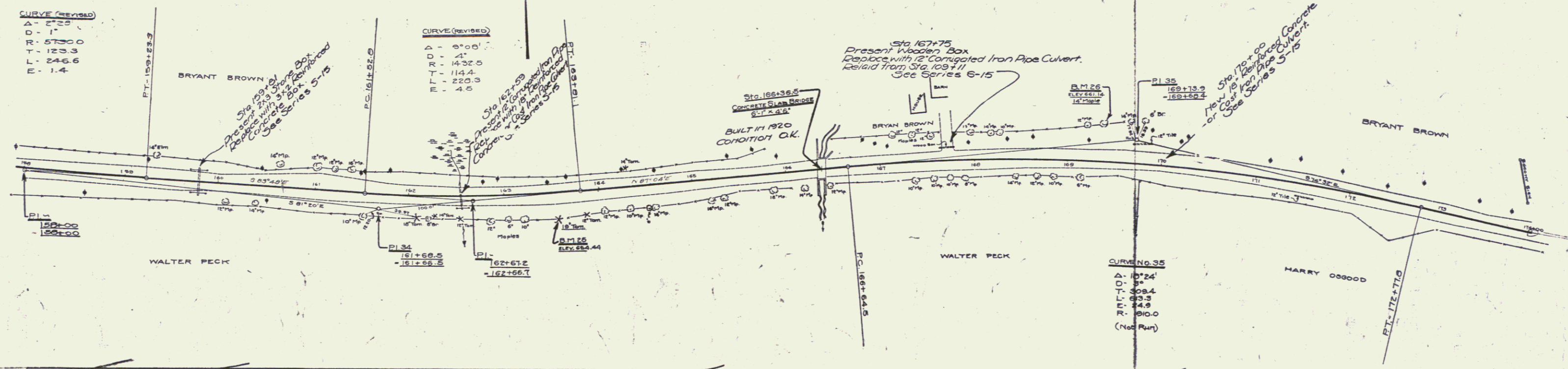
STA	TO	LENGTH
159+69	TO 159+93	24 FT.
162+47	TO 162+71	24 FT.
BRIDGE STA 166+36.5		48 FT.
STA 169+68	TO 170+12	24 FT.
(LEFT)		
STA 159+69	TO 159+93	LENGTH 24 FT.
STA 162+47	TO 162+71	24 FT.
BRIDGE STA 166+36.5		48 FT.
STA 169+68	TO 170+12	24 FT.
(RIGHT)		
TOTAL FOR SHEET 240 FT.		

NEW CULVERTS REQUIRED

STA 159+01 - 3x2' REINFORCED CONCRETE BOX CONCRETE CLASS A (1-2-4) REINFORCING STEEL	12.50 YDS. 019 LBS.
STA 162+59 - 18" REINFORCED CONCRETE OR CAST IRON PIPE CULVERT - LENGTH 28 FT. CONCRETE CLASS B (1-2-5) REINFORCING STEEL	27.00 YDS. 33 LBS.
STA 170+00 - 18" REINFORCED CONCRETE OR CAST IRON PIPE CULVERT - LENGTH 28 FT. CONCRETE CLASS B (1-2-5) REINFORCING STEEL	27.00 YDS. 33 LBS.

NEW CULVERTS REQUIRED FOR DOWNGRADES
 STA 167+75 12' CORRUGATED IRON PIPE CULVERT - LENGTH 16 FT. (ON LEFT)

FED. ROAD DIST. NO.	STATE	FED. AID PROJ. NO.	FISCAL YEAR	SHEET NO.	TOTAL SHEETS
1	VI.	25A	1922	12	53



PLAN
 1:2400
 1/2" = 100'

PROFILE
 1:1200
 1" = 10'

B.M. 25 - Spike in 18" Tamarack right of Sta. 163+50 - ELEV 654.44
 B.M. 26 - Spike in 14" Maple - left of Sta. 161+30 - ELEV 664.14

SERIES F 10.55A
 SHEET 14 of 53

13

WOOD GUARD RAIL REQUIRED

STA 178+12 TO 178+36	LENGTH 24 FT.
STA 181+98 TO 182+22	24 FT.
STA 189+00 TO 189+00	12 FT.
	60 FT.
STA 178+04 TO 178+28	LENGTH 24 FT.
STA 181+38 TO 182+22	24 FT.
	48 FT.
TOTAL FOR ONE SIDE	108 FT.

NEW CULVERTS REQUIRED

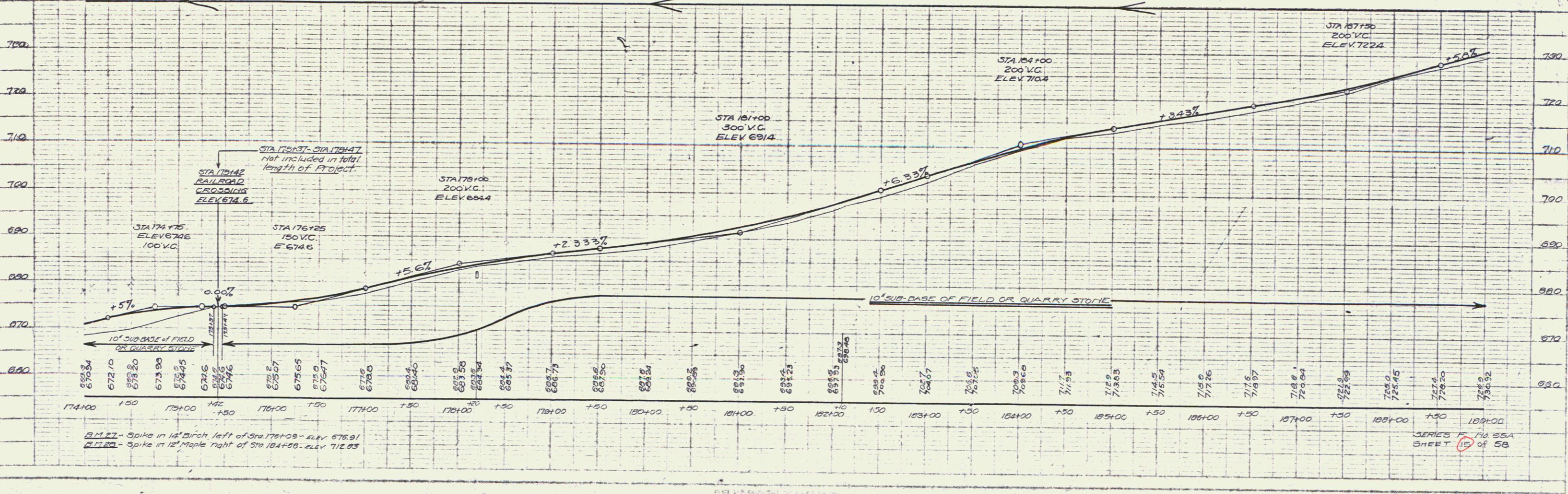
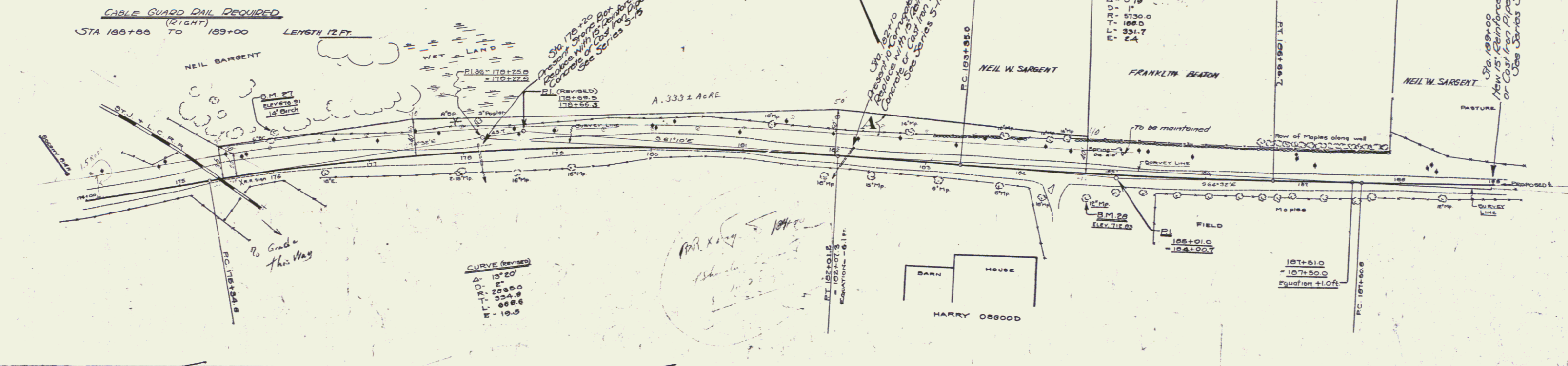
STA 178+20 - 15' REINFORCED CONCRETE OR CAST IRON PIPE CULVERT - LENGTH 32 FT.	CONCRETE CLASS B (1-2 1/2 - 5)	21 Cu Yds.
	REINFORCING STEEL	33 Lbs.
STA 182+10 - 15' REINFORCED CONCRETE OR CAST IRON PIPE CULVERT - LENGTH 32 FT.	CONCRETE CLASS B (1-2 1/2 - 5)	21 Cu Yds.
	REINFORCING STEEL	33 Lbs.
STA 189+00 - 15' REINFORCED CONCRETE OR CAST IRON PIPE CULVERT - LENGTH 28 FT.	CONCRETE CLASS B (1-2 1/2 - 5)	21 Cu Yds.
	REINFORCING STEEL	33 Lbs.

PARCEL	INSTRUMENT	DATE	GRANTOR	GRANTEE	RECORDED	REMARKS
A	W.D.O.E.	10-24-40	NEIL W. SARGENT	ST. OF VT.	BOOK 34 PAGE 286/7	DATE 10-25-40

CABLE GUARD RAIL REQUIRED (RIGHT)

STA 188+88 TO 189+00	LENGTH 12 FT.
----------------------	---------------

DATE	BY	CHKD.
10/25/40	A.J. BURNHALD	
10/25/40	A.W.C.	
10/25/40	A.W.C.	



B.M. 21 - Spike in 14" Birch left of Sta 178+08 - Elev 676.91
 B.M. 22 - Spike in 12" Maple right of Sta 184+20 - Elev 712.83

SERIES F 70 55A
 SHEET 15 OF 58

PLAN
 DATE: 10/1/50
 DRAWN BY: J. H. HARRIS
 CHECKED BY: J. H. HARRIS
 TITLE: ROAD IMPROVEMENT
 PROJECT: 65A
 SHEET NO: 17
 TOTAL SHEETS: 50

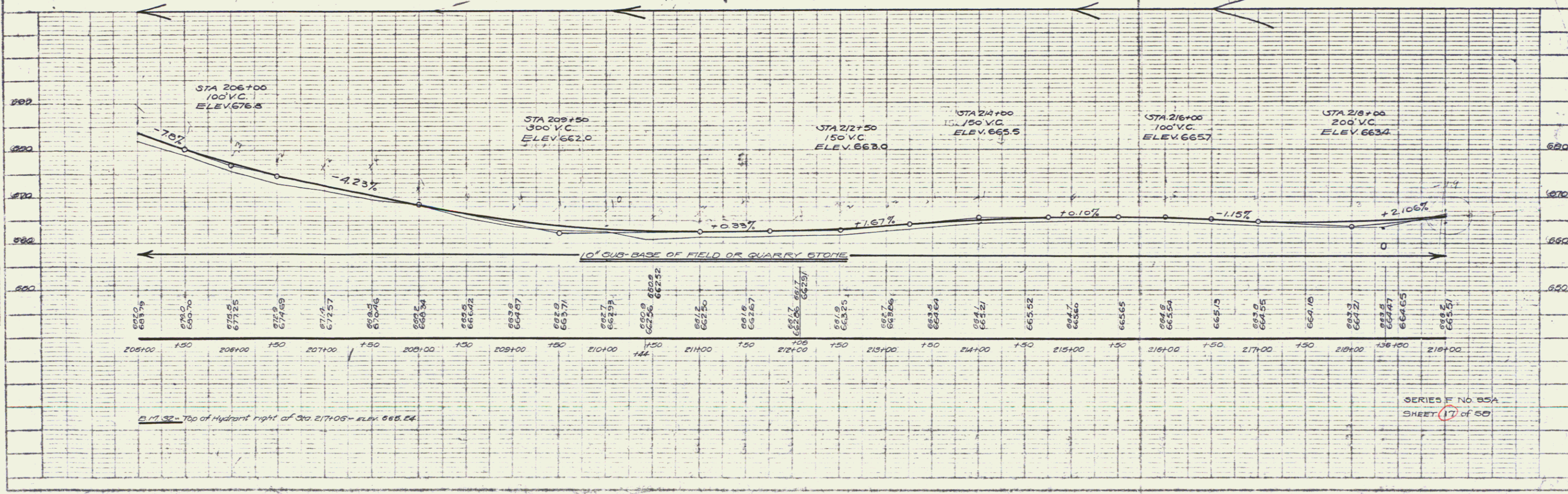
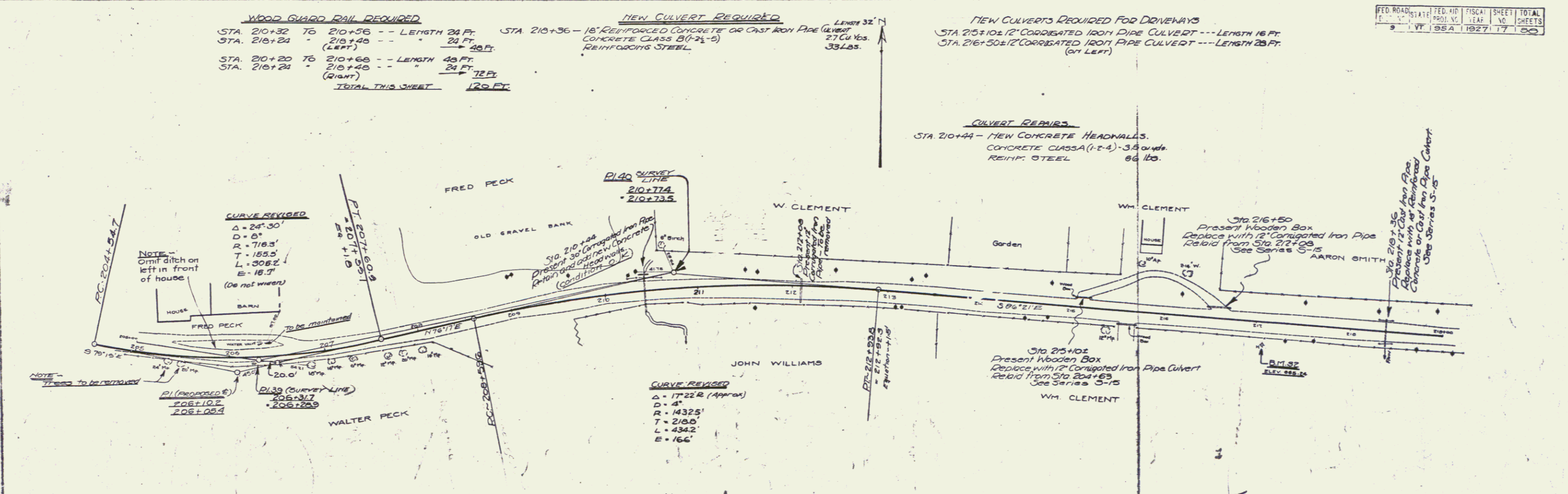
PROFILE
 DATE: 10/1/50
 DRAWN BY: J. H. HARRIS
 CHECKED BY: J. H. HARRIS
 TITLE: ROAD IMPROVEMENT
 PROJECT: 65A
 SHEET NO: 17
 TOTAL SHEETS: 50

WOOD GUARD RAIL REQUIRED
 STA. 210+32 TO 210+56 -- LENGTH 24 FT.
 STA. 210+24 TO 210+48 -- LENGTH 24 FT.
 STA. 210+20 TO 210+68 -- LENGTH 48 FT.
 STA. 210+24 TO 210+48 -- LENGTH 24 FT.
 (Right)
TOTAL THIS SHEET 120 FT.

NEW CULVERT REQUIRED
 STA. 210+36 - 18" REINFORCED CONCRETE OR CAST IRON PIPE
 CONCRETE CLASS B (1-2 1/2) REINFORCING STEEL
 LENGTH 32'
 27 Cu Yds.
 33 Lbs.

NEW CULVERTS REQUIRED FOR DRIVEWAYS
 STA. 210+10 12" CORRUGATED IRON PIPE CULVERT --- LENGTH 16 FT.
 STA. 210+50 12" CORRUGATED IRON PIPE CULVERT --- LENGTH 28 FT.
 (21' LEFT)

CULVERT REPAIRS
 STA. 210+44 - NEW CONCRETE HEADWALLS.
 CONCRETE CLASS A (1-F-4) - 3.9 cu yds.
 REINF. STEEL 66 Lbs.



FED. ROAD DIST. NO.	STATE	FISCAL YEAR	SHEET NO.	TOTAL SHEETS
65A	VT	1950	17	50

SERIES F NO 85A
 SHEET 17 OF 50

WOOD GUARD RAIL REQUIRED
 (LEFT)
 STA. 222+92 TO 223+16 LENGTH 24 FT.
 (RIGHT)
 STA. 222+04 TO 223+08 LENGTH 24 FT.
 TOTAL FOR SHEET - 48 FT.

CABLE GUARD RAIL REQUIRED
 (RIGHT)
 STA. 226+08 TO 231+28 LENGTH 200 FT.

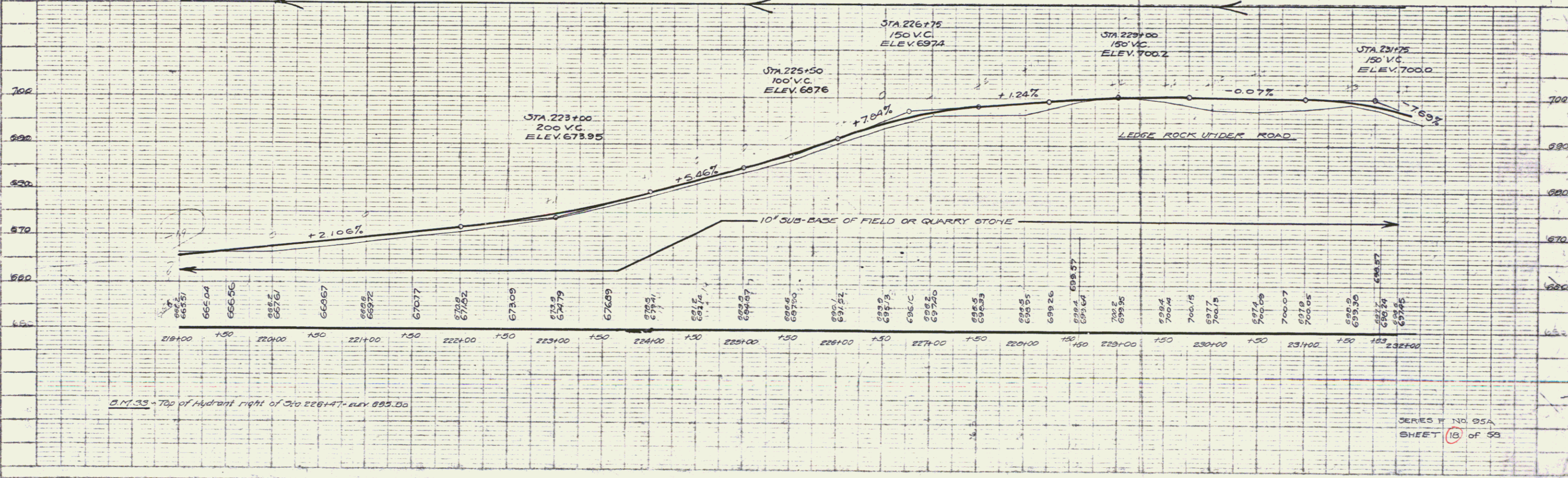
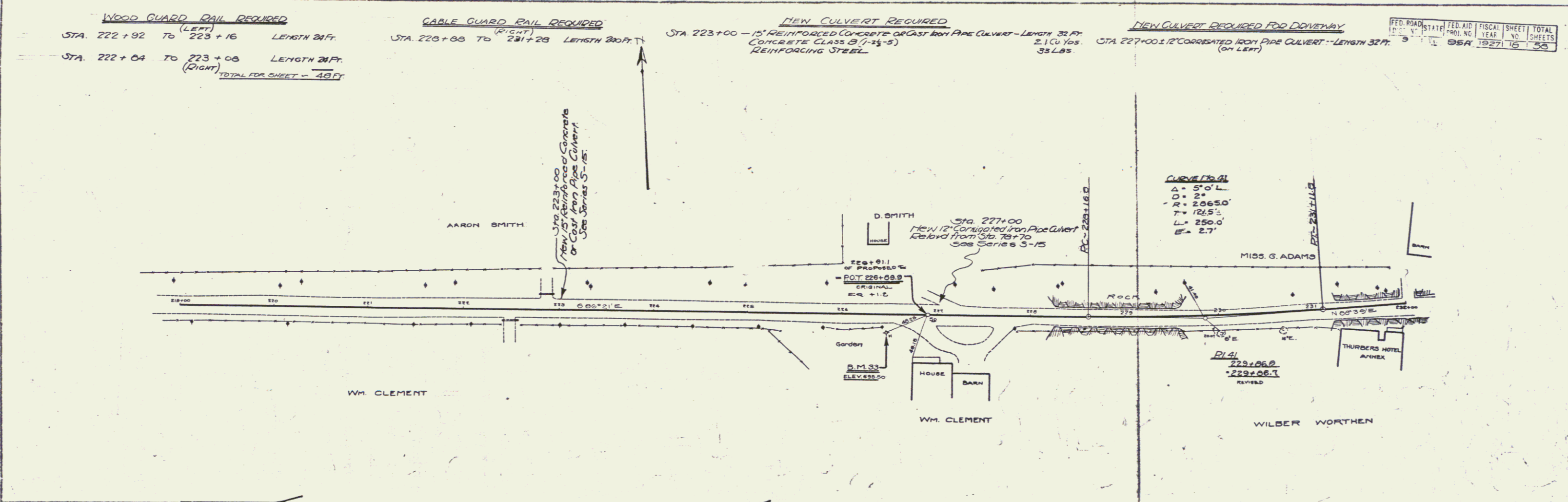
NEW CULVERT REQUIRED
 STA. 223+00 - 15' REINFORCED CONCRETE OR CAST IRON PIPE CULVERT - LENGTH 33 FT.
 2.1 Cu Yds. 33 LBS.
 CONCRETE CLASS B (1-13-5)
 REINFORCING STEEL

NEW CULVERT REQUIRED FOR DRIVEWAY
 STA. 227+00 - 12' CORRUGATED IRON PIPE CULVERT - LENGTH 32 FT.
 (ON LEFT)

FED. ROAD DIST. NO.	STATE	FED. AID PROJ. NO.	FISCAL YEAR	SHEET NO.	TOTAL SHEETS
95A	1927	16	53		

PLAN	DATE	BY	CHECKED
FILED	APR 1927	A. J. RICHARDS	W. H. HARRIS
APPROVED		A. W. C. HANLEY	W. H. HARRIS
DATE		APR 1927	APR 1927
BY		A. W. C. HANLEY	W. H. HARRIS
CHECKED		W. H. HARRIS	W. H. HARRIS

PROFILE	DATE	BY	CHECKED
FILED	APR 1927	A. J. RICHARDS	W. H. HARRIS
APPROVED		A. W. C. HANLEY	W. H. HARRIS
DATE		APR 1927	APR 1927
BY		A. W. C. HANLEY	W. H. HARRIS
CHECKED		W. H. HARRIS	W. H. HARRIS



SHEET 18 OF 53

