

PLAN
 DATE: 1927
 DRAWN BY: J. H. HARRIS
 CHECKED BY: J. H. HARRIS
 TITLE: ROAD IMPROVEMENT
 PROJECT: 65A

PROJ. IN CHARGE: J. H. HARRIS
 SUPERVISOR: J. H. HARRIS
 ENGINEER: J. H. HARRIS
 DATE: 1927
 DRAWN BY: J. H. HARRIS
 CHECKED BY: J. H. HARRIS
 TITLE: ROAD IMPROVEMENT
 PROJECT: 65A

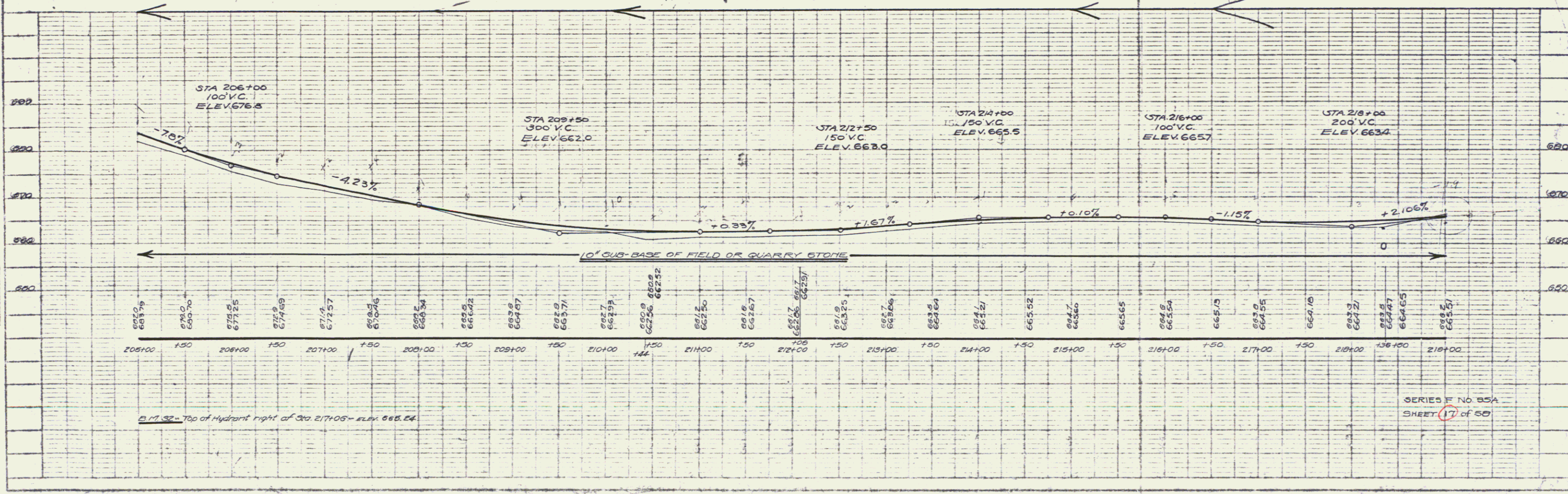
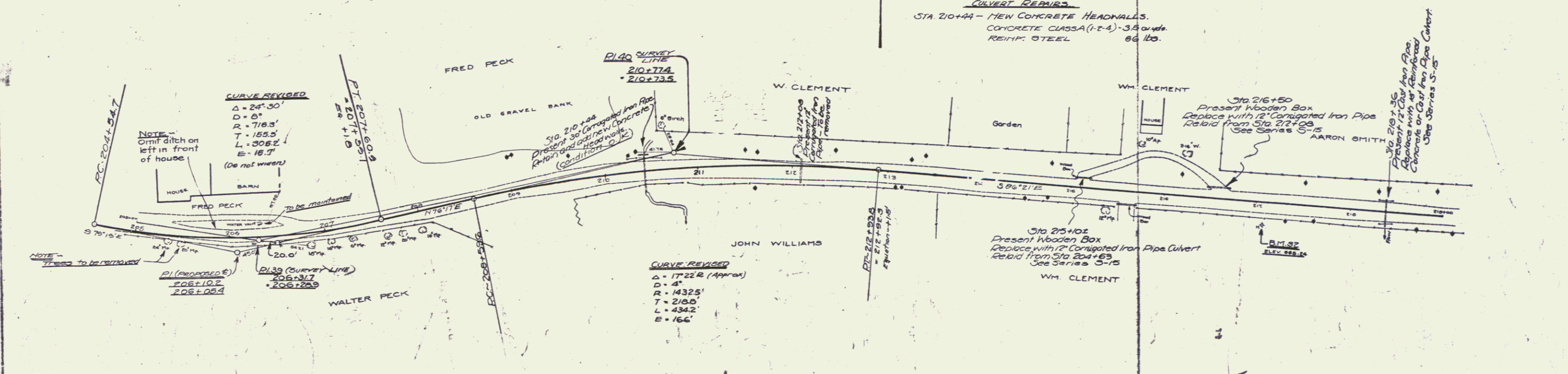
FED. ROAD DIST.	STATE	FISCAL YEAR	SHEET NO.	TOTAL SHEETS
VT	65A	1927	17	50

WOOD GUARD RAIL REQUIRED
 STA. 210+32 TO 210+56 -- LENGTH 24 FT.
 STA. 210+24 TO 210+48 -- LENGTH 24 FT.
 STA. 210+20 TO 210+68 -- LENGTH 48 FT.
 STA. 210+24 TO 210+48 -- LENGTH 24 FT.
 TOTAL THIS SHEET 120 FT.

NEW CULVERT REQUIRED
 STA. 210+36 - 18" REINFORCED CONCRETE OR CAST IRON PIPE (4180')
 CONCRETE CLASS B (1-2 1/2) REINFORCING STEEL. LENGTH 32'.
 27 Cu Yds. 33 Lbs.

NEW CULVERTS REQUIRED FOR DRIVEWAYS
 STA. 210+10 1/2" CORRUGATED IRON PIPE CULVERT --- LENGTH 16 FT.
 STA. 216+50 12" CORRUGATED IRON PIPE CULVERT --- LENGTH 25 FT. (2" LEFT)

CULVERT REPAIRS
 STA. 210+44 - NEW CONCRETE HEADWALLS.
 CONCRETE CLASS A (1-F-4) - 3.9 cu yds.
 REINF. STEEL 66 lbs.



SERIES F No 65A
 SHEET 17 of 50