

**WOOD GUARD RAIL REQUIRED**

STA. 178+12 TO 178+36	LENGTH 24 FT.
STA. 181+98 TO 182+22	24 FT.
STA. 189+00 TO 189+00	12 FT.
	60 FT.
STA. 178+04 TO 178+28	LENGTH 24 FT.
STA. 181+38 TO 182+22	24 FT.
	48 FT.
<b>TOTAL FOR ONE SIDE</b>	<b>108 FT.</b>

**NEW CULVERTS REQUIRED**

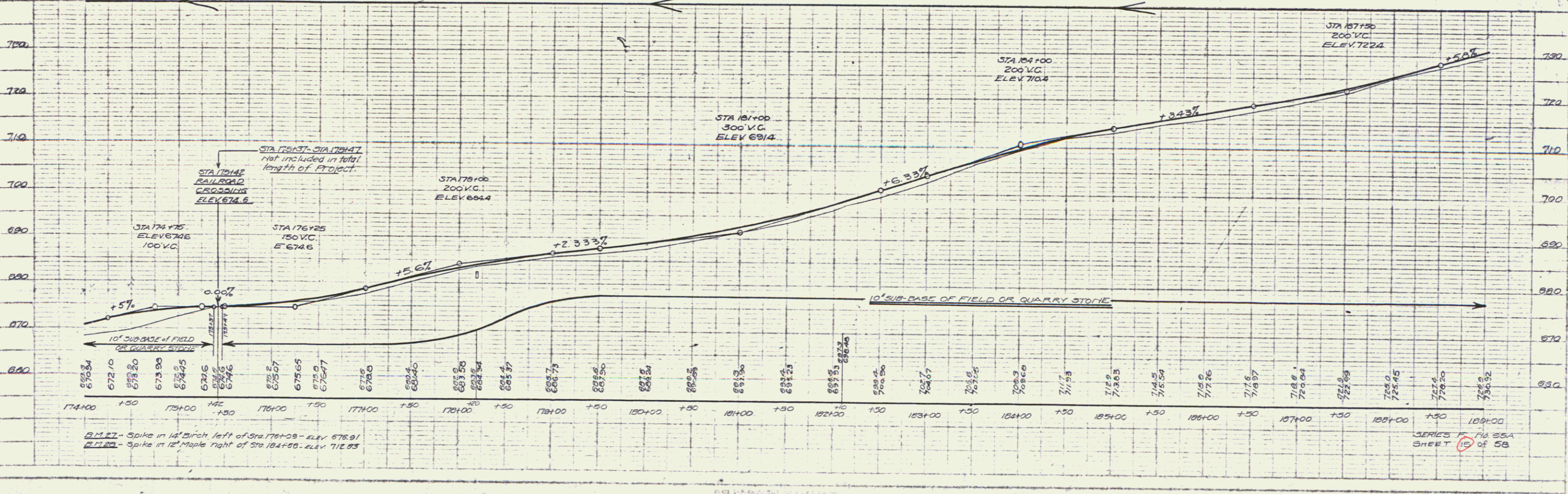
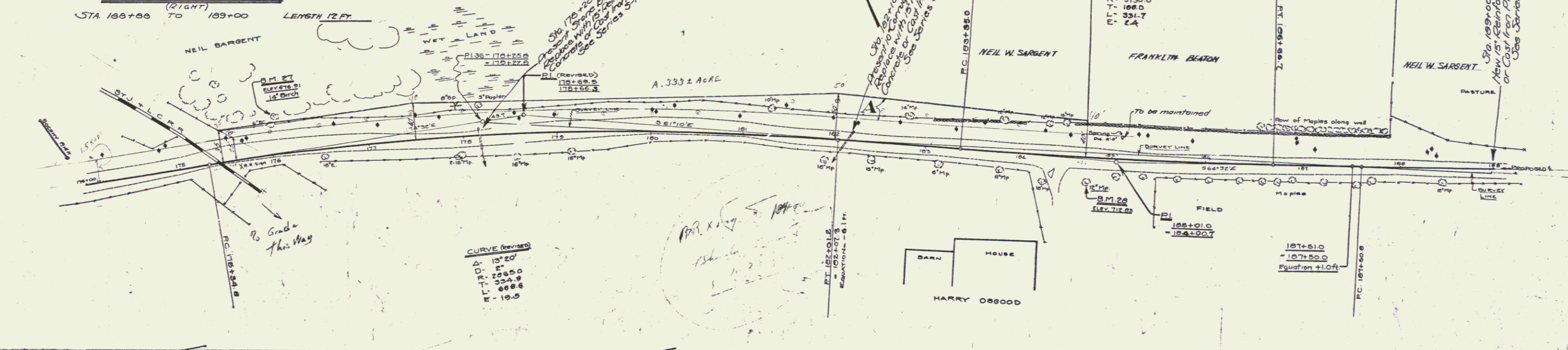
STA. 178+20 - 15' REINFORCED CONCRETE OR CAST IRON PIPE CULVERT - LENGTH 32 FT.	CONCRETE CLASS B (1-2 1/2 - 5)	21 Cu. Yds.
	REINFORCING STEEL	33 Lbs.
STA. 182+10 - 15' REINFORCED CONCRETE OR CAST IRON PIPE CULVERT - LENGTH 32 FT.	CONCRETE CLASS B (1-2 1/2 - 5)	21 Cu. Yds.
	REINFORCING STEEL	33 Lbs.
STA. 189+00 - 15' REINFORCED CONCRETE OR CAST IRON PIPE CULVERT - LENGTH 28 FT.	CONCRETE CLASS B (1-2 1/2 - 5)	21 Cu. Yds.
	REINFORCING STEEL	33 Lbs.

PARCEL	INSTRUMENT	DATE	GRANTOR	GRANTEE	RECORDED	REMARKS
A	W.D.O.E.	10-24-40	NEIL W. SARGENT	ST. OF VT.	BOOK 34 PAGE 286/7	DATE 10-25-40

**CABLE GUARD RAIL REQUIRED (RIGHT)**

STA. 188+88 TO 189+00 LENGTH 12 FT.

PLAN	DATE	BY	CHECKED
10/25/40	10/25/40	A. J. BURNHAM	A. J. BURNHAM
10/25/40	10/25/40	A. J. BURNHAM	A. J. BURNHAM
10/25/40	10/25/40	A. J. BURNHAM	A. J. BURNHAM



SERIES F 70 55A SHEET 15 OF 58