

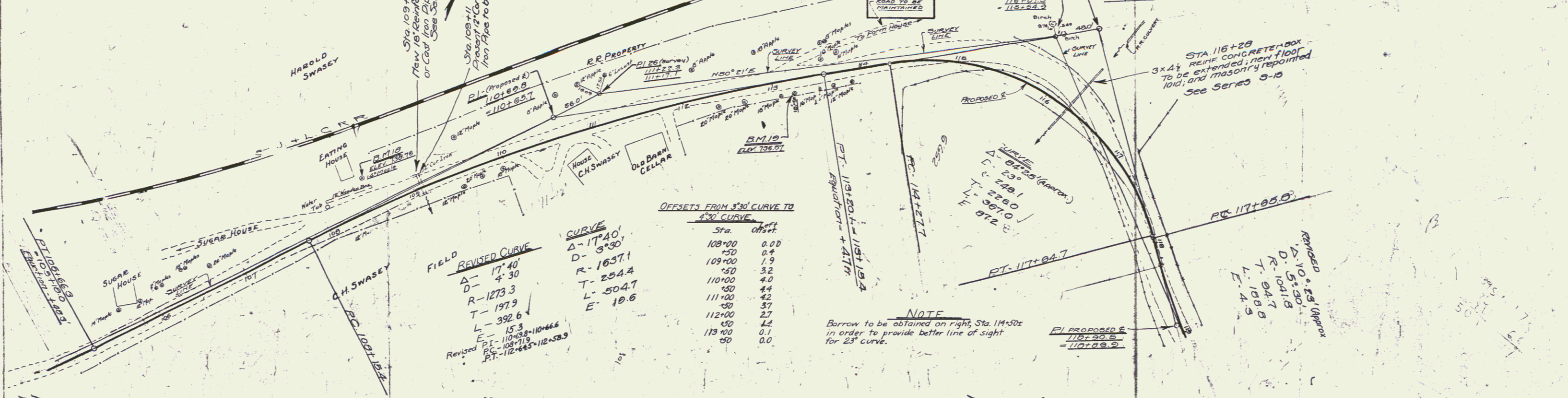
WOOD GUARD RAIL REQUIRED STA 108+98 TO 109+22--LENGTH 24 FT
 STA 116+13 TO 116+37-- 24 FT (LEFT) 40 FT
 STA 108+98 TO 109+22--LENGTH 24 FT (RIGHT) TOTAL FOR SHEET--TEPT.

CABLE GUARD RAIL REQUIRED STA 115+25 TO 116+77--LENGTH 152 FT

NEW 18" REINFORCED CONCRETE OR CAST IRON PIPE CULVERT STA 109+10--18" REINFORCED CONCRETE OR CAST IRON PIPE CULVERT--LENGTH 28 FT. CONCRETE CLASS B (1-2 1/2-5) 27 CU YDS. REINFORCING STEEL 33 Lbs.

CULVERT REPAIRS REQUIRED STA 116+28--EXTENSION OF FLOOR CONCRETE CLASS A (1-2-4)--15 CUBS. REINF. STEEL W02T 100 REPOINTING MASONRY 117 sq yds.

FED. ROAD DIST. NO.	STATE	PROJECT NO.	SHEET NO.	TOTAL SHEETS
1	VI.	95A	1927	10



FIELD REVISED CURVE

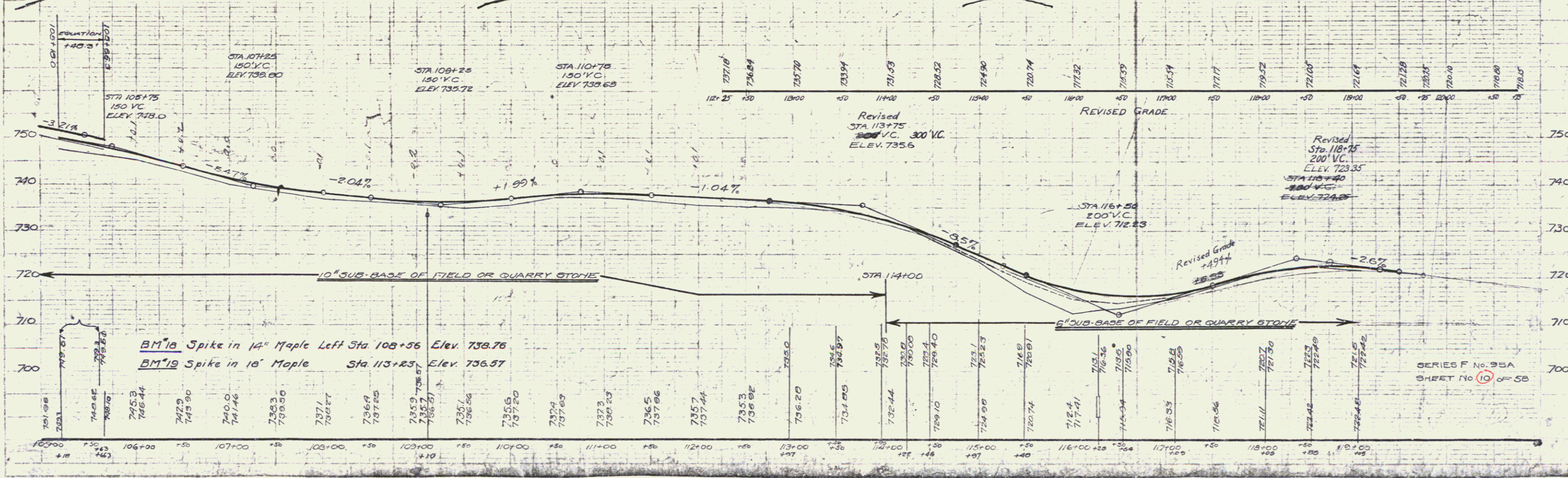
Δ - 17° 40'
 D - 4° 30'
 R - 1273.3
 T - 197.9
 L - 392.6
 Revised P.I. - 108+88
 P.C. - 108+119
 P.T. - 112+445

CURVE

Δ - 17° 40'
 D - 3° 30'
 R - 1637.1
 T - 234.4
 L - 504.7
 E - 18.6

OFFSETS FROM 330' CURVE TO 450' CURVE

Sta	Offset
108+00	0.00
109+00	0.8
109+50	1.9
110+00	3.2
110+50	4.4
111+00	4.2
111+50	3.7
112+00	2.7
112+50	1.4
113+00	0.1
113+50	0.0



BM¹⁸ Spike in 14" Maple Left Sta 108+56 Elev. 736.76
 BM¹⁹ Spike in 18" Maple Sta 113+23 Elev. 736.57

SERIES F No. 95A
 SHEET No. 10 of 5B