

WOOD GUARD RAIL REQUIRED

STA 64+09	TO 64+33	LENGTH	24 FT
STA 65+06	TO 65+22	"	16 FT
STA 70+04	TO 71+08	"	24 FT
STA 72+31	TO 72+55	"	24 FT
TOTAL - 88 FT			

(Left)

STA 60+13	TO 60+37	LENGTH	24 FT
STA 64+09	TO 64+33	"	24 FT
STA 65+06	TO 65+22	"	16 FT
STA 70+04	TO 71+08	"	24 FT
STA 72+31	TO 72+55	"	24 FT
TOTAL - 120 FT			

(Right)

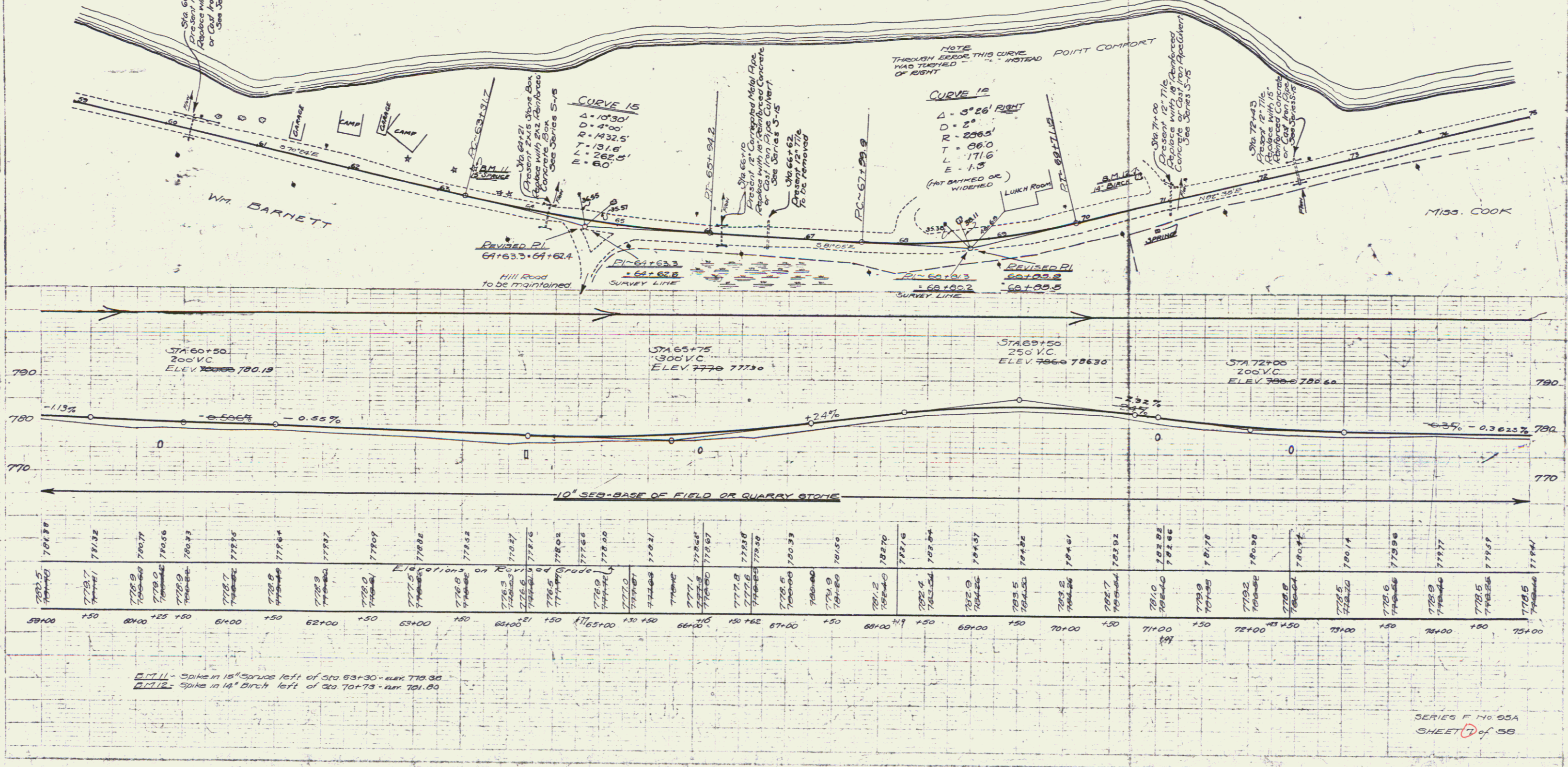
CABLE GUARD RAIL REQUIRED

STA 59+00	TO 60+04	LENGTH	104 FT
STA 71+00	TO 75+00	"	40 FT
TOTAL FOR SHEET - 144 FT			

NEW CULVERTS REQUIRED

STA. 60+25	15' REINFORCED CONCRETE OR CAST IRON PIPE - LENGTH 30 FT.	21 CUYDS.
	CONCRETE CLASS B (1-2 1/2-5)	33 LBS.
	REINFORCING STEEL	
STA. 64+21	24" REINFORCED CONCRETE BOX	36 CUYDS.
	CONCRETE CLASS A (1-2-4)	693 LBS.
	REINFORCING STEEL	
STA. 66+10	15' REINFORCED CONCRETE OR CAST IRON PIPE - LENGTH 20 FT.	27 CUYDS.
	CONCRETE CLASS B (1-2 1/2-5)	33 LBS.
	REINFORCING STEEL	
STA. 71+00	15' REINFORCED CONCRETE OR CAST IRON PIPE - LENGTH 30 FT.	27 CUYDS.
	CONCRETE CLASS B (1-2 1/2-5)	33 LBS.
	REINFORCING STEEL	
STA. 72+43	15' REINFORCED CONCRETE OR CAST IRON PIPE - LENGTH 20 FT.	21 CUYDS.
	CONCRETE CLASS B (1-2 1/2-5)	33 LBS.

FED. ROAD DIST. NO.	STATE	FED. AID PROJ. NO.	FISCAL YEAR	SHEET NO.	TOTAL SHEETS
1	VT.	98A1927	7	56	56



Elevations on Road Grade

59+00	781.38	60+00	781.32	61+00	780.77	62+00	780.56	63+00	780.33	64+00	782.16	65+00	782.64	66+00	783.17	67+00	783.09	68+00	783.82	69+00	784.27	70+00	784.54	71+00	784.81	72+00	785.17	73+00	785.53	74+00	785.89	75+00	786.25
-------	--------	-------	--------	-------	--------	-------	--------	-------	--------	-------	--------	-------	--------	-------	--------	-------	--------	-------	--------	-------	--------	-------	--------	-------	--------	-------	--------	-------	--------	-------	--------	-------	--------

E.I.I.I. - Spike in 15" Spruce left of sta 63+30 - elev 779.35
 B.I.I.I. - Spike in 14" Birch left of sta 70+73 - elev 781.83