

**WOOD GUARD RAIL REQUIRED**

STA 51+45 TO 57+69 (Left)	LENGTH 24 FT
STA 46+25 TO 46+75	40 FT
STA 45+09 TO 45+33	24 FT
STA 49+34 TO 49+38	4 FT
STA 52+40 TO 52+64	24 FT
STA 57+45 TO 57+69 (Right)	24 FT
<b>TOTAL SHEET - 160 FT</b>	

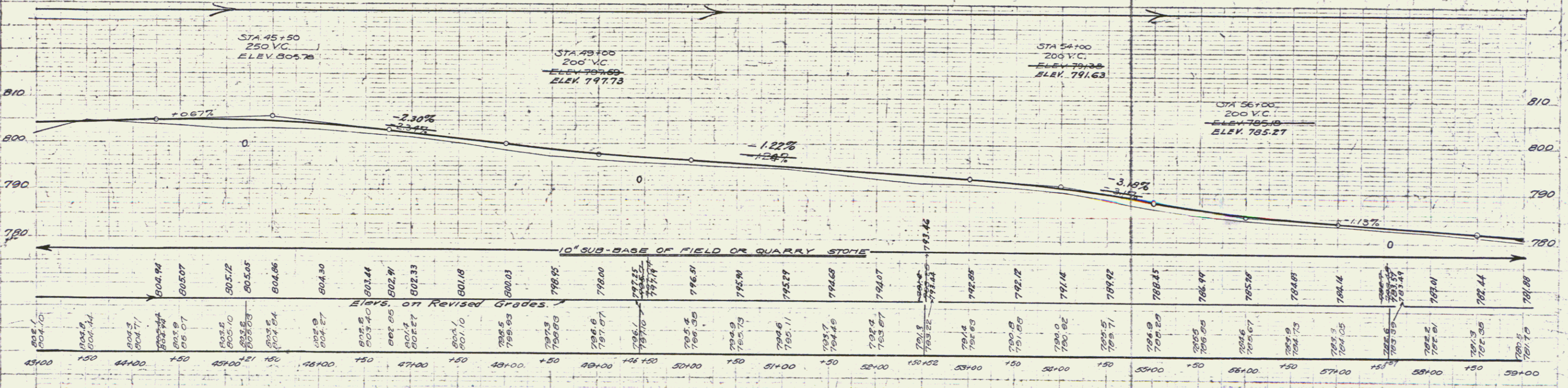
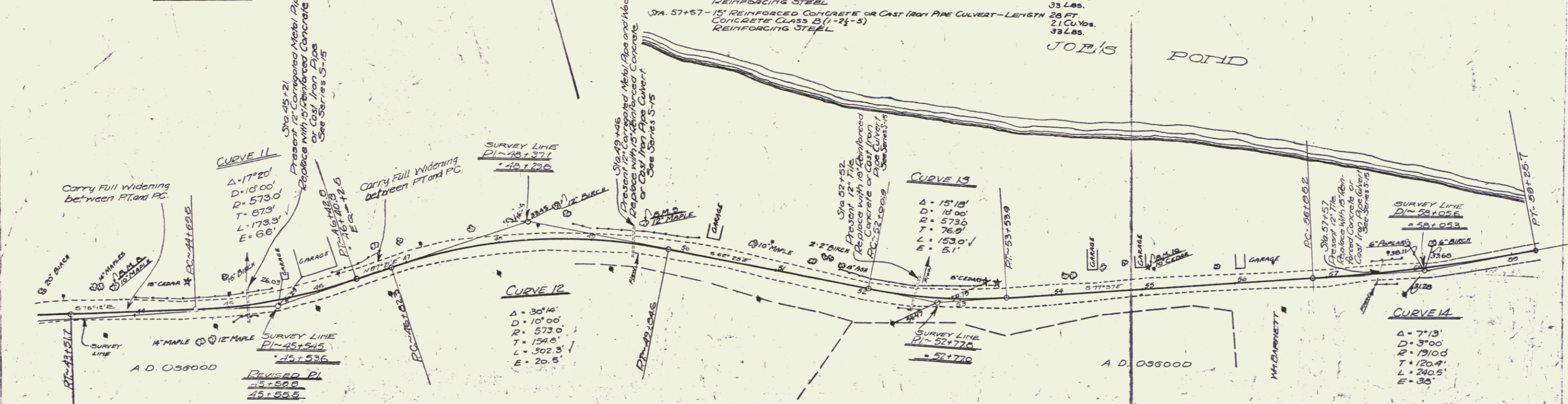
**CABLE GUARD RAIL REQUIRED**

STA 44+20 TO 45+40 - LENGTH 120 FT
STA 48+70 TO 49+02 - 32 FT
STA 51+92 TO 53+00 - 108 FT
<b>TOTAL FOR SHEET - 400 FT</b>

**NEW CULVERTS REQUIRED**

STA 45+21 - 15' REINFORCED CONCRETE OR CAST IRON PIPE CULVERT - LENGTH 44 FT	CONCRETE CLASS B (1-2 1/2-5)	21 Cu Yds.
	REINFORCING STEEL	33 Lbs.
STA 49+45 - 15' REINFORCED CONCRETE OR CAST IRON PIPE CULVERT - LENGTH 36 FT	CONCRETE CLASS B (1-2 1/2-5)	21 Cu Yds.
	REINFORCING STEEL	33 Lbs.
STA 52+52 - 15' REINFORCED CONCRETE OR CAST IRON PIPE CULVERT - LENGTH 44 FT	CONCRETE CLASS B (1-2 1/2-5)	27 Cu Yds.
	REINFORCING STEEL	33 Lbs.
STA 57+57 - 15' REINFORCED CONCRETE OR CAST IRON PIPE CULVERT - LENGTH 28 FT	CONCRETE CLASS B (1-2 1/2-5)	21 Cu Yds.
	REINFORCING STEEL	33 Lbs.

FED. ROAD DIST. NO.	STATE	FED. AID PROJ. NO.	FISCAL YEAR	SHEET NO.	TOTAL SHEETS
8	VI.	52A	1927	6	56



**Elevs. on Revised Grades**

Station	Elevation
43+00	805.10
43+10	804.94
43+20	804.77
43+30	804.60
43+40	804.44
43+50	804.27
43+60	804.10
43+70	803.94
43+80	803.77
43+90	803.60
44+00	803.44
44+10	803.27
44+20	803.10
44+30	802.94
44+40	802.77
44+50	802.60
44+60	802.44
44+70	802.27
44+80	802.10
44+90	801.94
45+00	801.77
45+10	801.60
45+20	801.44
45+30	801.27
45+40	801.10
45+50	800.94
45+60	800.77
45+70	800.60
45+80	800.44
45+90	800.27
46+00	800.10
46+10	799.94
46+20	799.77
46+30	799.60
46+40	799.44
46+50	799.27
46+60	799.10
46+70	798.94
46+80	798.77
46+90	798.60
47+00	798.44
47+10	798.27
47+20	798.10
47+30	797.94
47+40	797.77
47+50	797.60
47+60	797.44
47+70	797.27
47+80	797.10
47+90	796.94
48+00	796.77
48+10	796.60
48+20	796.44
48+30	796.27
48+40	796.10
48+50	795.94
48+60	795.77
48+70	795.60
48+80	795.44
48+90	795.27
49+00	795.10
49+10	794.94
49+20	794.77
49+30	794.60
49+40	794.44
49+50	794.27
49+60	794.10
49+70	793.94
49+80	793.77
49+90	793.60
50+00	793.44
50+10	793.27
50+20	793.10
50+30	792.94
50+40	792.77
50+50	792.60
50+60	792.44
50+70	792.27
50+80	792.10
50+90	791.94
51+00	791.77
51+10	791.60
51+20	791.44
51+30	791.27
51+40	791.10
51+50	790.94
51+60	790.77
51+70	790.60
51+80	790.44
51+90	790.27
52+00	790.10
52+10	789.94
52+20	789.77
52+30	789.60
52+40	789.44
52+50	789.27
52+60	789.10
52+70	788.94
52+80	788.77
52+90	788.60
53+00	788.44
53+10	788.27
53+20	788.10
53+30	787.94
53+40	787.77
53+50	787.60
53+60	787.44
53+70	787.27
53+80	787.10
53+90	786.94
54+00	786.77
54+10	786.60
54+20	786.44
54+30	786.27
54+40	786.10
54+50	785.94
54+60	785.77
54+70	785.60
54+80	785.44
54+90	785.27
55+00	785.10
55+10	784.94
55+20	784.77
55+30	784.60
55+40	784.44
55+50	784.27
55+60	784.10
55+70	783.94
55+80	783.77
55+90	783.60
56+00	783.44
56+10	783.27
56+20	783.10
56+30	782.94
56+40	782.77
56+50	782.60
56+60	782.44
56+70	782.27
56+80	782.10
56+90	781.94
57+00	781.77
57+10	781.60
57+20	781.44
57+30	781.27
57+40	781.10
57+50	780.94
57+60	780.77
57+70	780.60
57+80	780.44
57+90	780.27
58+00	780.10
58+10	779.94
58+20	779.77
58+30	779.60
58+40	779.44
58+50	779.27
58+60	779.10
58+70	778.94
58+80	778.77
58+90	778.60
59+00	778.44

B.M. 6 - Spike in 10' Maple left of Sta. 43+61 - elev. 805.84  
 B.M. 9 - Spike in 14' Maple left of Sta. 45+83 - elev. 786.95  
 B.M. 10 - Spike in 10' Cedar left of Sta. 55+05 - elev. 787.75