

WOOD GUARD RAIL REQUIRED

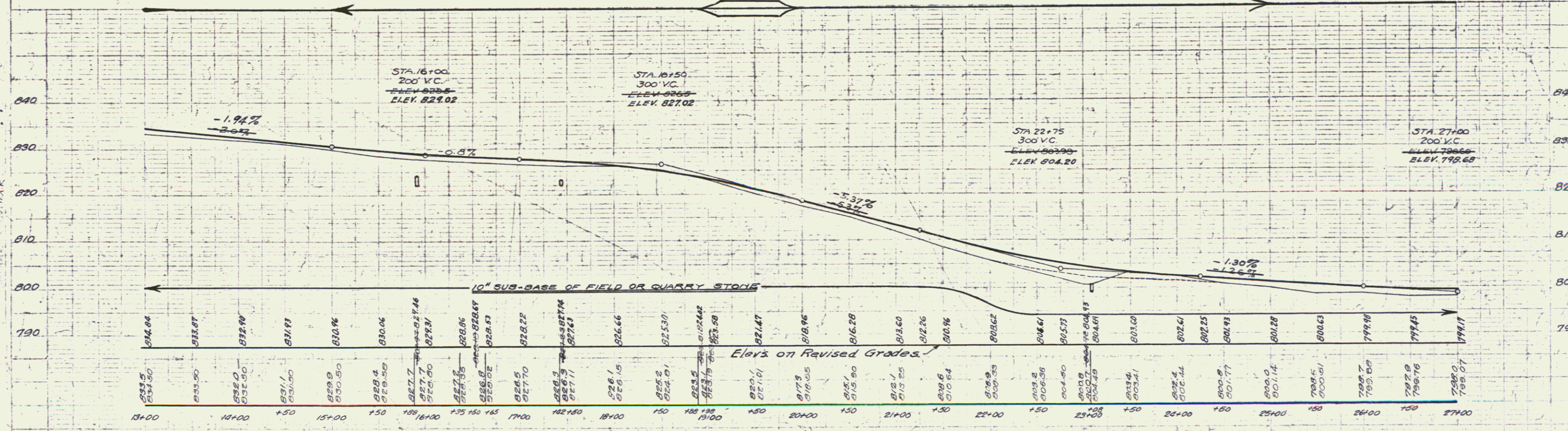
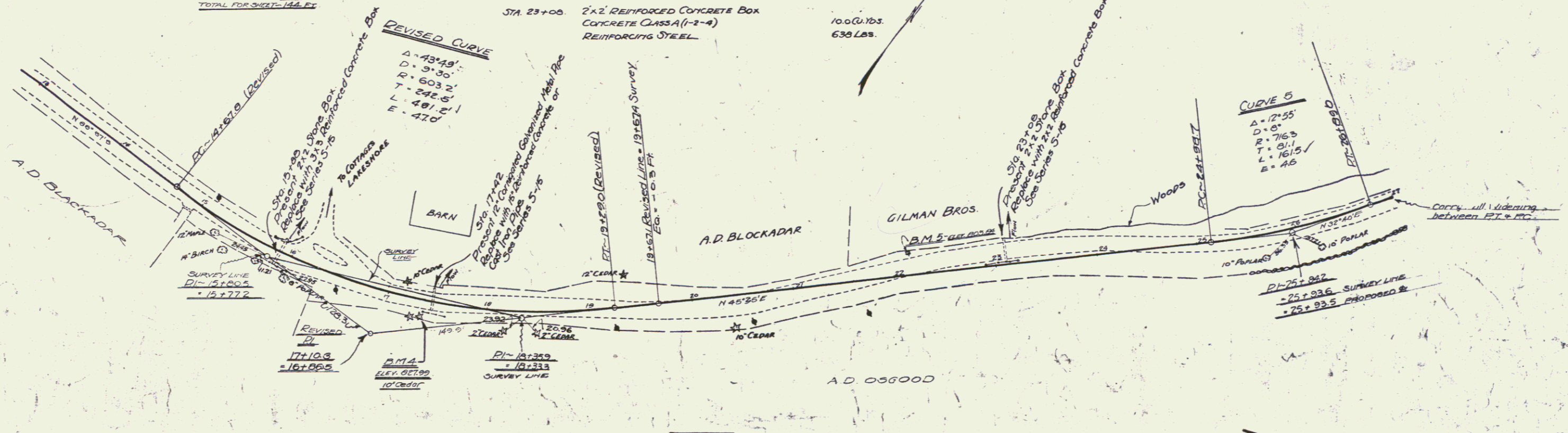
STA. 15+76 TO 16+00	LENGTH 24 FT.
STA. 17+30 TO 17+54	24 FT.
STA. 22+96 TO 23+20	24 FT.
(LEFT)	
STA. 15+76 TO 16+00	LENGTH 24 FT.
STA. 17+30 TO 17+54	24 FT.
STA. 22+96 TO 23+20	24 FT.
TOTAL FOR GUARD RAIL	

CABLE GUARD RAIL REQUIRED

STA. 24+00 TO 27+00	LENGTH 280 FT.
---------------------	----------------

NEW CULVERTS REQUIRED

STA. 15+00	3x3' REINFORCED CONCRETE BOX	47 Cu Yds
	CONCRETE CLASS A (1-2-4)	957 Lbs.
	REINFORCING STEEL	
STA. 17+42	15" REINFORCED CONCRETE OR CAST IRON PIPE CULVERT - LENGTH 132 FT.	2.1 Cu Yds.
	CONCRETE CLASS B (1-2-5)	33 Lbs.
	REINFORCING STEEL	
STA. 23+00	2x2' REINFORCED CONCRETE BOX	10.0 Cu Yds.
	CONCRETE CLASS A (1-2-4)	638 Lbs.
	REINFORCING STEEL	



B.M. 4 - Spike in 10' Cedar right of Sta. 17+34 - elev 827.99
 B.M. 5 - Spike in Power Line Pole, left of Sta. 22+14 - elev 805.84