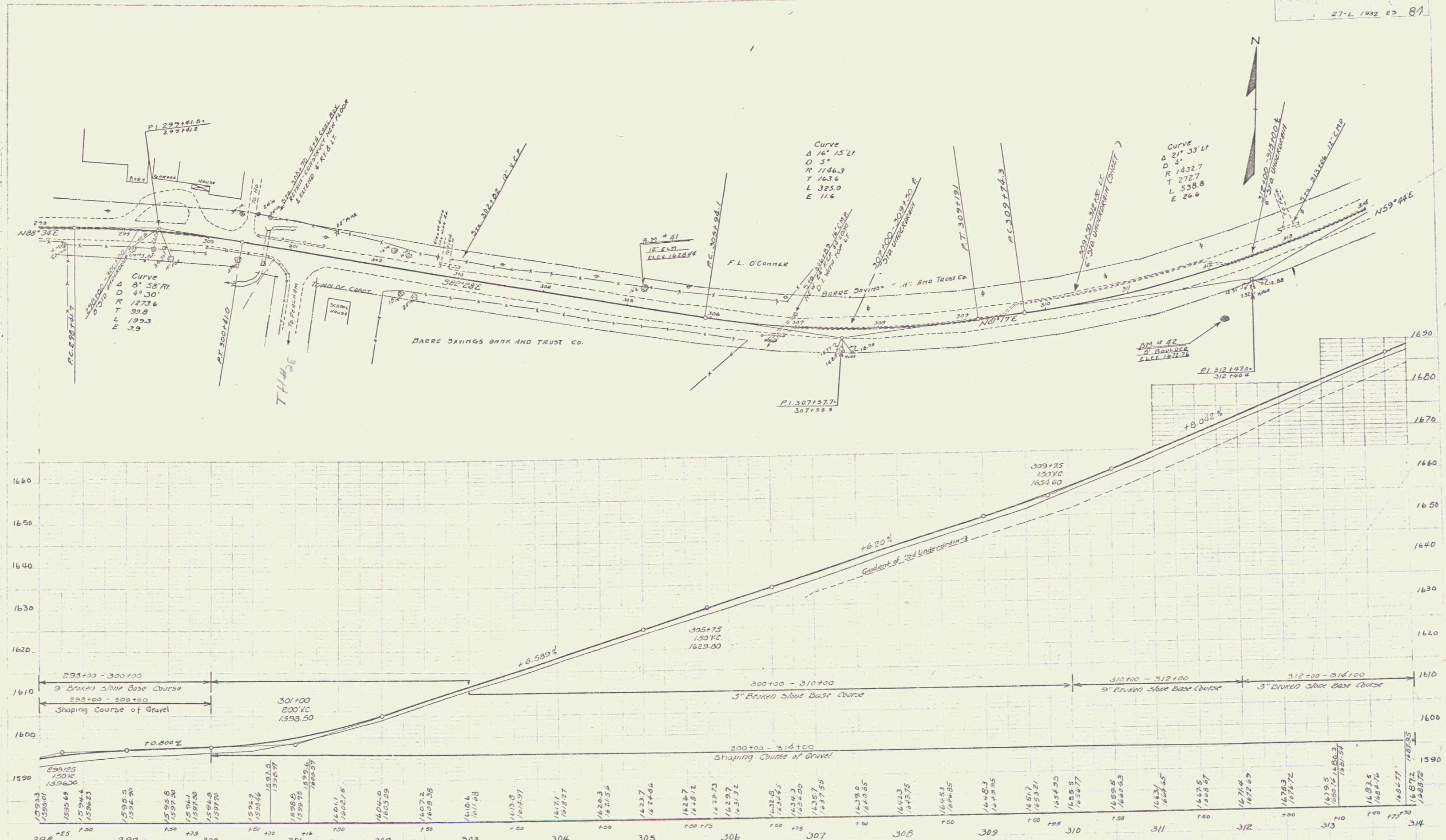


PARRETT PANE
5/11/1932

PARRETT PANE
5/11/1932



B.M. No 41 - SPIKE IN ROOT-12" ELM-1' FT LT. STA 303+6
 B.M. No 42 - SPOT ON 3' FT BOULDER 36' FT LT. STA 312+01

SERIES F No. 27-L
 SHEET 23 OF 84