

INDEX OF SHEETS

SHEET NO.	TITLE PAGE
2	TYPICAL CROSS-SECTION OF IMPROVEMENT
3	PLAN AND PROFILE STA. 104+00 TO STA. 120+00
4	120+00 TO 136+00
5	136+00 TO 146+00
6	146+00 TO 161+00
7	161+00 TO 176+00
8	176+00 TO 186+00
9	CULVERT AT STA. 128+85
10	157+65
11-22	CROSS SECTIONS

FED. ROAD DIST. NO.	STATE	FED. AID PROJ. NO.	FISCAL YEAR	SHEET NO.	TOTAL SHEETS
3	Vt.	273	1928	1	22

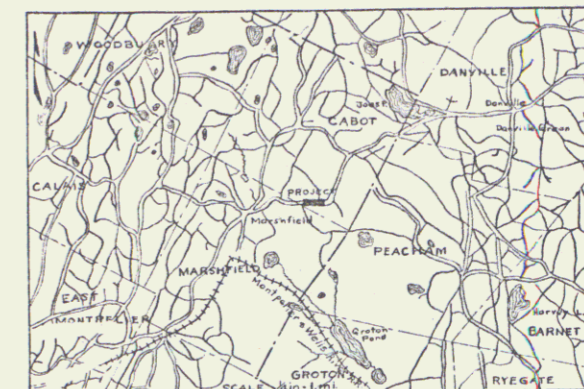
STATE OF VERMONT
STATE HIGHWAY DEPARTMENT

PLAN AND PROFILE OF PROPOSED
STATE HIGHWAY

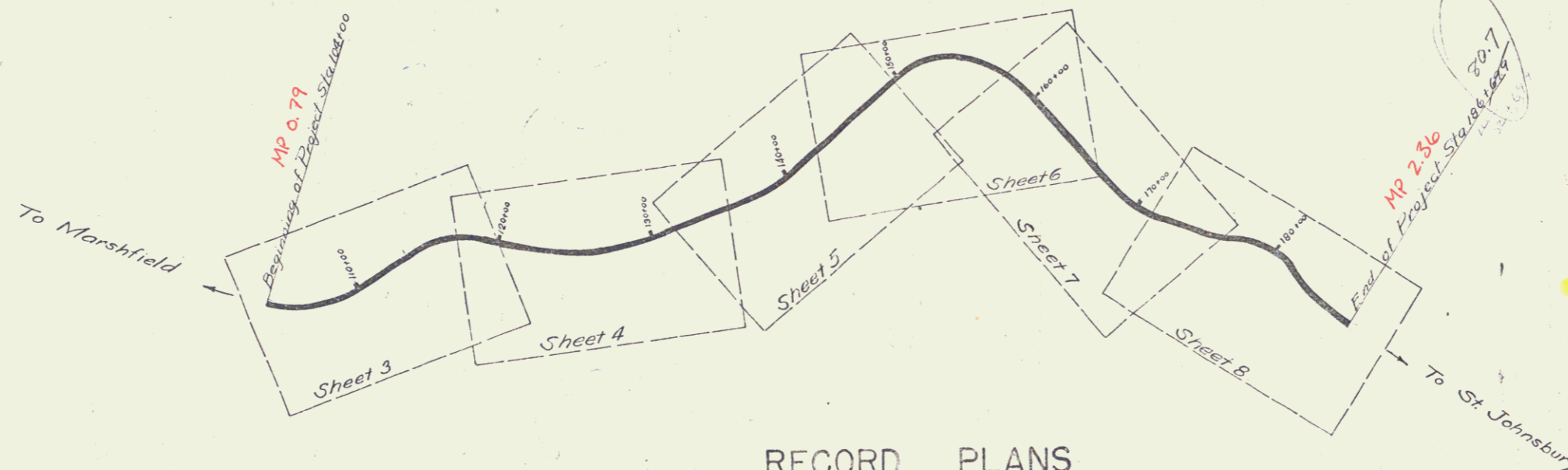
FEDERAL AID PROJECT

TOWN OF CABOT
MOLLY'S FALLS ROAD
BETWEEN SECTIONS OF 27A

Pin# 99R128



SCALES
Plan 1 in = 50 ft.
Profile Horiz. 1 in = 50 ft. Vert. 1 in = 10 ft.
Cross Sections 1 in = 5 ft.



RIGHT-OF-WAY DIVISION
TOWN FILE
PERPETUAL
Town of US 2
(To Be Returned To R.O.W. Division)

RECORD PLANS

LAYOUT
SCALE 1 in = 500 ft.

CONVENTIONAL SIGNS

COUNTY LINE	GROUND ELEVATION	DATUM	LINE
TOWN LINE	GRADE ELEVATION	DATUM	LINE
FENCE LINE			
STONE WALL			
UNFENCED PROPERTY			
GUARD RAIL			
TRAVELED WAY			
RAILROAD			
RETAINING WALL			
CENTERLINE			
SURVEY LINE			
CULVERT			
DROP INLET			
TROLLEY POLE			
POWER POLE			
TELEPHONE POLE			
TREES			
HEDGE			

SUBMITTED BY ORDER OF THE STATE HIGHWAY BOARD
CHIEF ENGINEER
DEPARTMENT OF HIGHWAYS

RECOMMENDED
DISTRICT ENGINEER
BUREAU OF PUBLIC ROADS
RECOMMENDED FOR APPROVAL
CHIEF ENGINEER
BUREAU OF PUBLIC ROADS
APPROVED
DIRECTOR - BUREAU OF PUBLIC ROADS

SERIES F No. 273
SHEET 1 OF 22

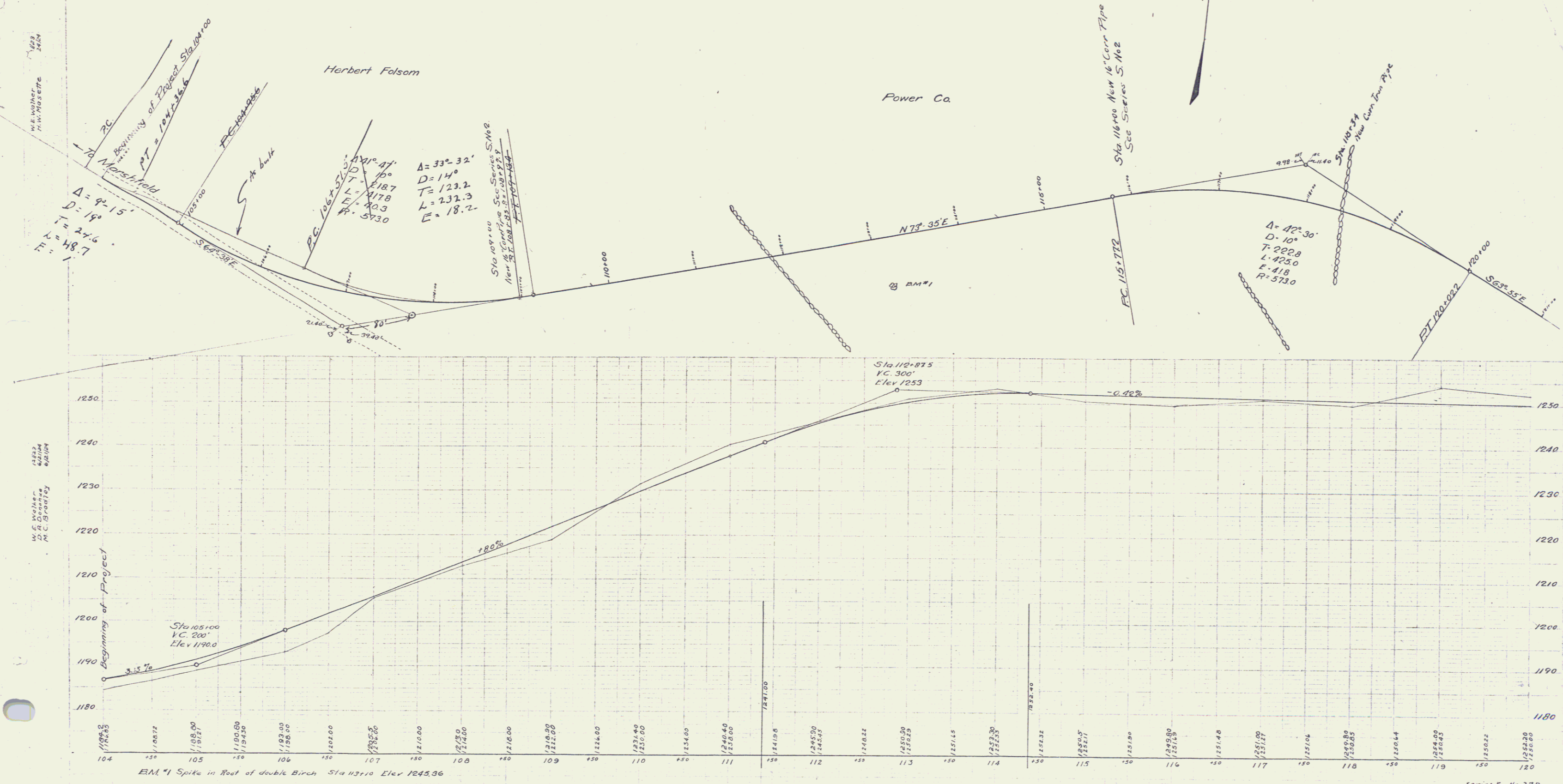
01/01/23

GUARD RAIL REQUIRED
 ON LEFT
 Sta 108+88 to Sta 109+12 Length 24 ft
 " 115+88 " " 116+12 " 24 "
 ON RIGHT
 Sta 105+24 to Sta 109+18 Length 392 ft
 " 115+88 " " 116+12 " 24 "
 Total this sheet 468 ft

NEW CULVERTS REQUIRED
 Sta 109+00 16" Cor. Pipe 4 Rely
 28' from old road 13'
 1-2 1/2 - 5 Con. 18 Cuyds Earth Excav. 1 C.I.
 Sta 116+00 16" Cor. Pipe 30'
 1-2 1/2 - 5 Con. 18 Cuyds Earth Excav. 7-5 C.I.
 Sta 118+37 12" Cor. Pipe 30'
 1-2 1/2 - 5 Con. 1 C.I.
 Earth Excav. 14 C.I.

SUB-BASE REQUIRED
 Sta 110+50 to Sta 110+50 Length 000 ft
 115+00 " 115+30 " 30'
 117+00 " 115+00 " 30'

FED. ROAD DIST. NO.	STATIONED AND PAVED	YEAR	SHEET NO.	TOTAL SHEETS
27B	1923	3	22	



W.E. Walker
 H.W. Moser

W.E. Walker
 D.R. Gonsky
 P.C. Gonsky

Series F No. 27B
 Sheet 3 of 22

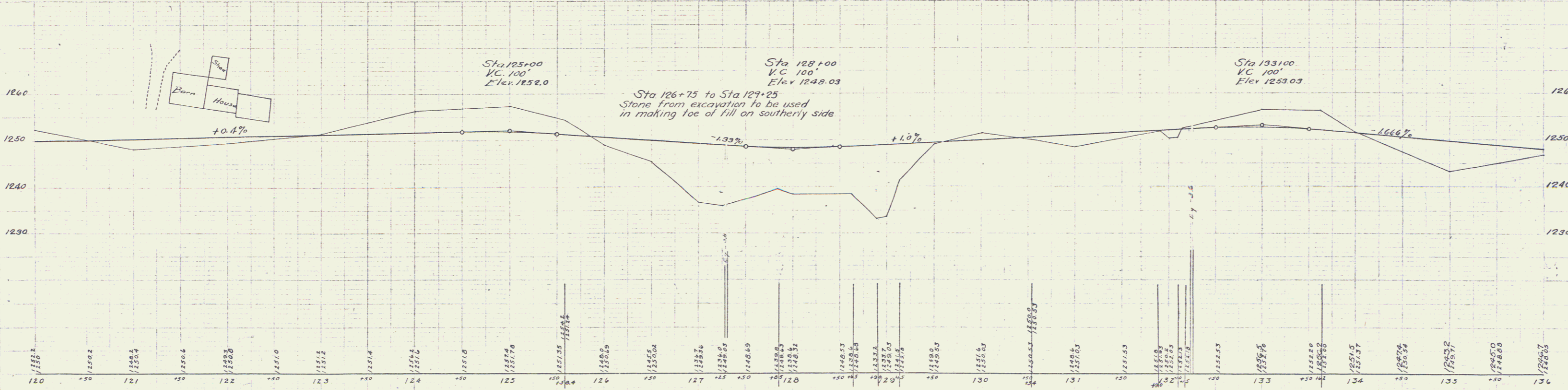
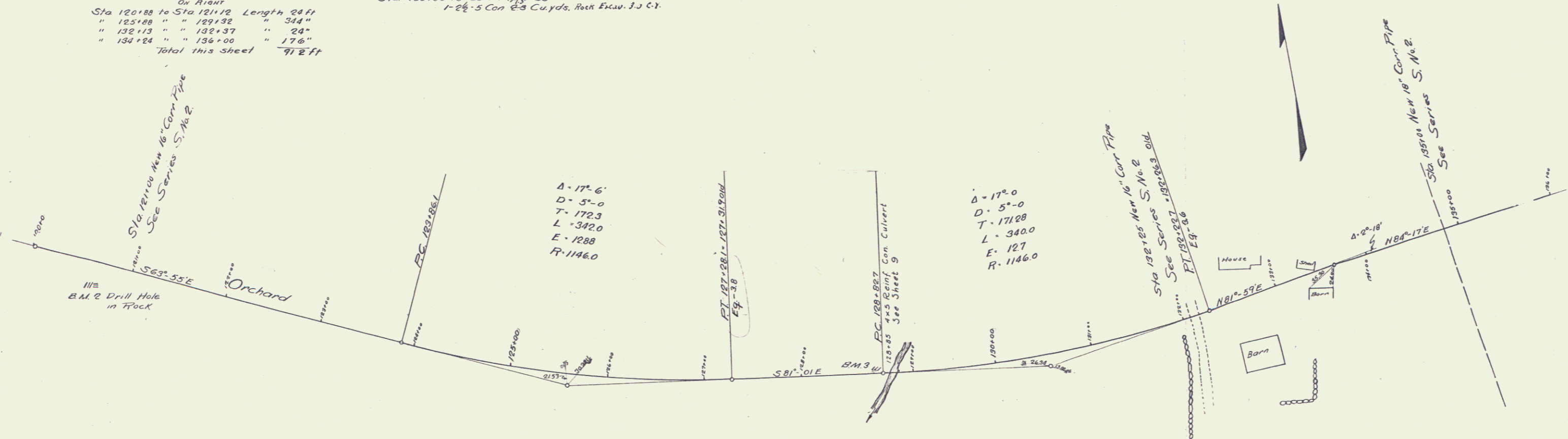
GUARD RAIL REQUIRED
 ON LEFT
 Sta 120+88 to Sta 121+12 Length 24 ft
 " 126+60 " " 129+32 " 272"
 " 132+13 " " 133+37 " 24"
 " 134+88 " " 135+12 " 24"
 ON RIGHT
 Sta 120+88 to Sta 121+12 Length 24 ft
 " 125+88 " " 129+32 " 344"
 " 132+13 " " 133+37 " 24"
 " 134+88 " " 135+12 " 176"
 Total this sheet 912 ft

NEW CULVERTS REQUIRED
 Sta 121+00 16" Cor. Pipe 28'
 Sta 132+25 16" Cor. Pipe 30'
 Sta 133+00 18" Cor. Pipe 38'
 1-2 1/2 Con 28 Cu yds. Rock Excav. 3.0 CY.
 1-2 1/2 Con 30 Cu yds. Earth Excav. 3.5 CY.

FILED	ROAD STATE	FILED	ADJ. FILED	SHEET	TOTAL
				27B	1923 4 22

W.E. Miller
M.H. Mercette
Dec.

W.E. Miller
M.C. Conway
Whit



BM #2 Drill hole in Rock Elev. 1246.87
 " #3 Drill hole in Rock " 1239.65

Series No. 27B Filed
 Sheet 4 of 22

GUARD RAIL REQUIRED
 ON LEFT
 Sta 145+18 to Sta 145+48 Length 30 ft.
 ON RIGHT
 Sta 136+00 to Sta 136+16 Length 16 ft.
 " 141+84 " " 143+36 " 152"
 " 144+76 " " 146+12 " 136"
 Total this sheet 328 ft.

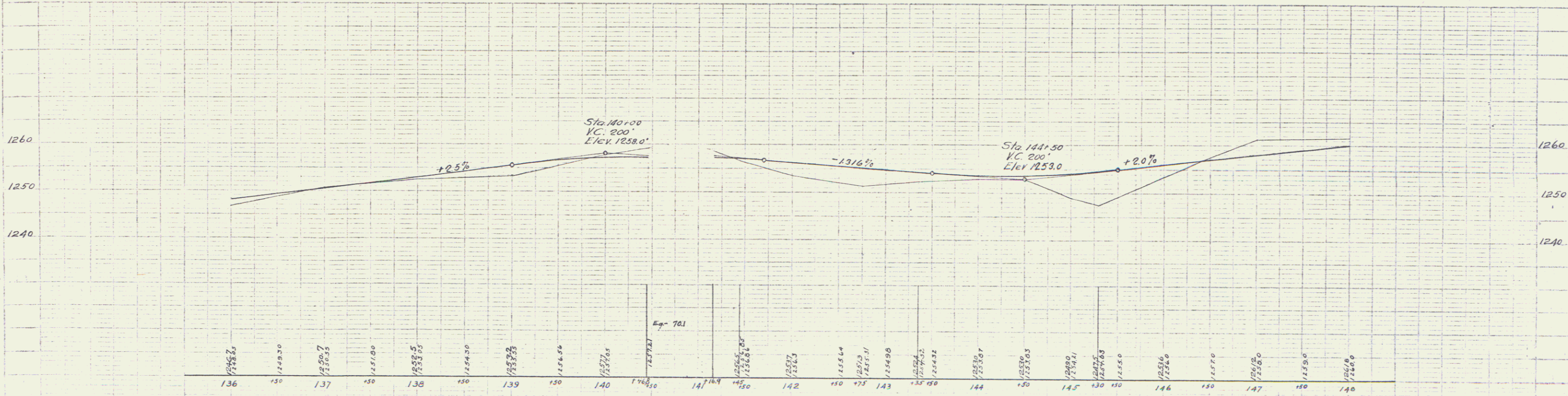
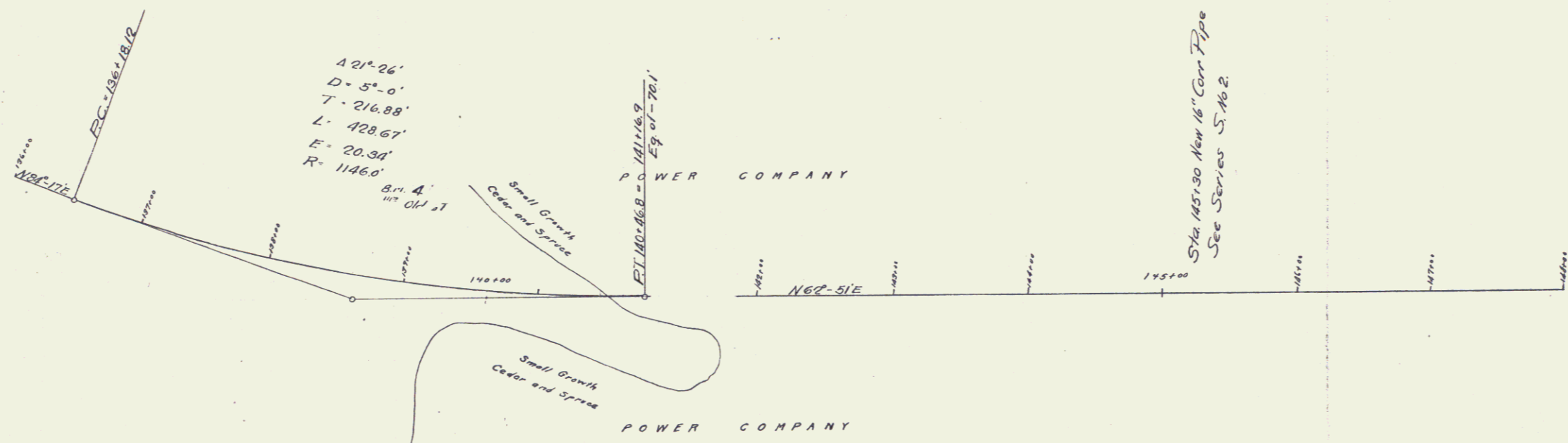
NEW CULVERTS REQUIRED
 Sta 145+30 16" Corr Pipe 98'
 1-2 5' Cor. 1/2 Cu. yds.
 13
 Rock Excav. 79 Cu.

Sub-Base Required
 Sta. 140+00 to Sta. 150+00 Length 100'

FED. ROAD DIST. NO.	STATE	FISCAL YEAR	SHEET NO.	TOTAL SHEETS
278	1923	5	22	

H. H. HERRICK
 1/14/24

H. H. HERRICK
 1/14/24



B.M. Drill hole in Rock ON 67 Elev. 1262.96

Series F No 27B Filed Sheet 22 of 22

GUARD RAIL REQUIRED
 On Left
 Sta 149+00 to Sta 149+26 Length 26ft
 " 154+76 " " 153+54 " 22"
 " 156+78 " " 155+38 " 40"
 On Right
 Sta 149+00 to Sta 149+26 Length 26ft
 " 153+88 " " 153+58 " 30"
 " 156+78 " " 155+62 " 24"
 Total this sheet 656ft

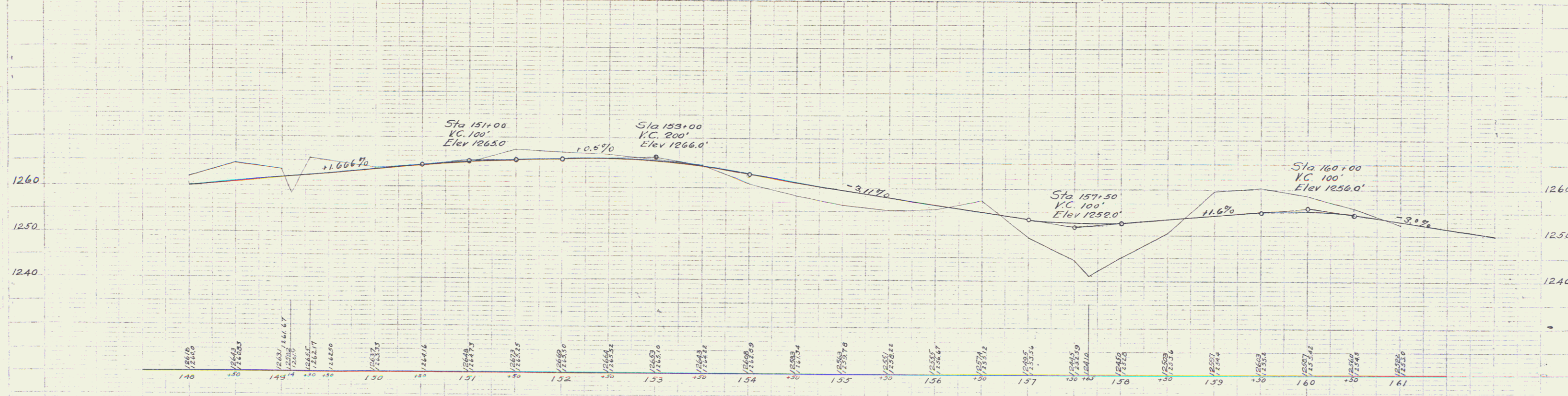
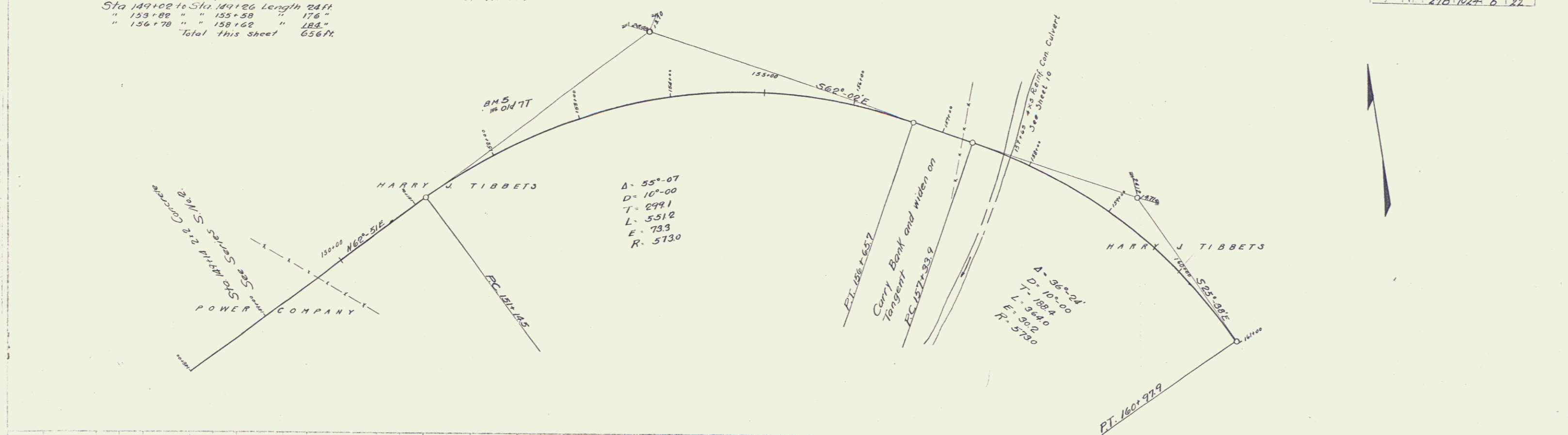
NEW CULVERTS REQUIRED
 Sta 149+10 2x2 Concrete
 1-2'x4' Con 3.2 Cuyds.
 1-2'x5' " 3.6 " "
 Earth Excav. 33.3

SUB-BASE REQUIRED
 Sta 155+75 to Sta 156+75 Length 100 Ft.

FEED	ROAD	STATE	FED. AID	FISCAL	SHEET	TOTAL
1	1	1	1	1	6	22

M.E. Walker
 12/24
 HARRIS
 12/24

M.E. Walker
 12/24
 HARRIS
 12/24



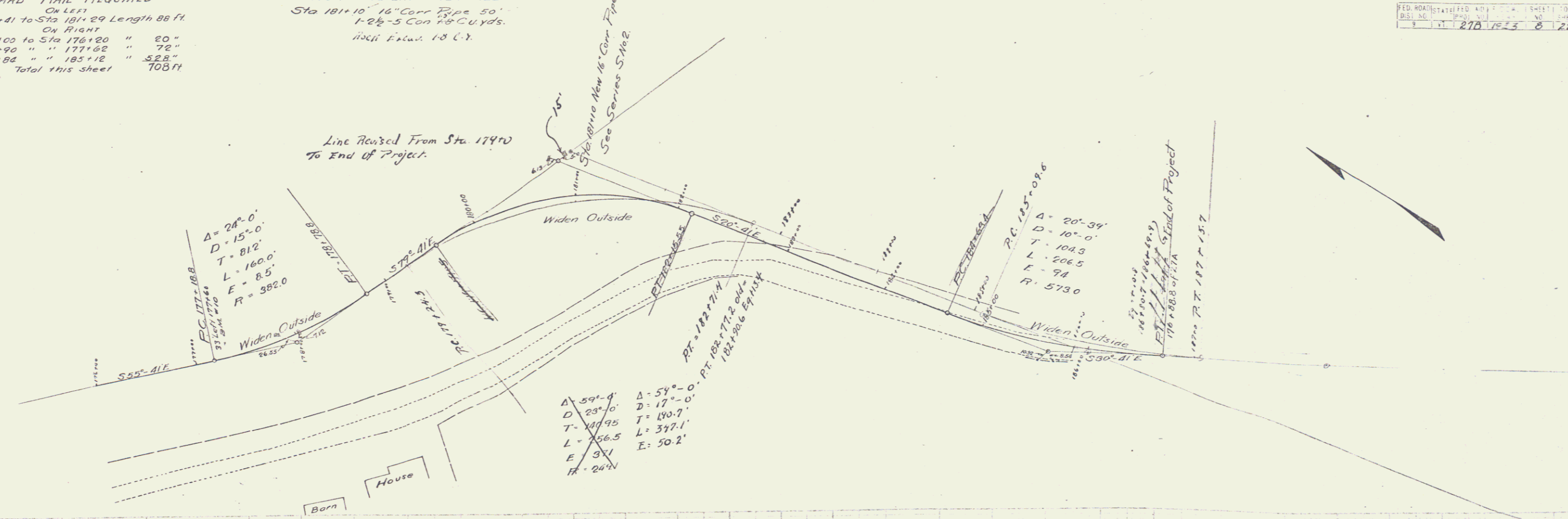
B.M. #5 Drill hole in Rock Old 77 Elev 1274.29

Series F No. 21B
 Filed
 Sheet No. 6 of 22

GUARD RAIL REQUIRED
 On Left
 Sta 180+41 to Sta 181+29 Length 88 Ft
 On Right
 Sta 176+00 to Sta 176+20 " 20"
 " 176+90 " " 177+62 " 72"
 " 179+82 " " 185+12 " 528"
 Total this sheet 703 Ft

NEW CULVERTS REQUIRED
 Sta 181+10 16" Corr Pipe 50'
 1-26-5 Con 78 Cu yds.
 100% Excav. 18 C.Y.

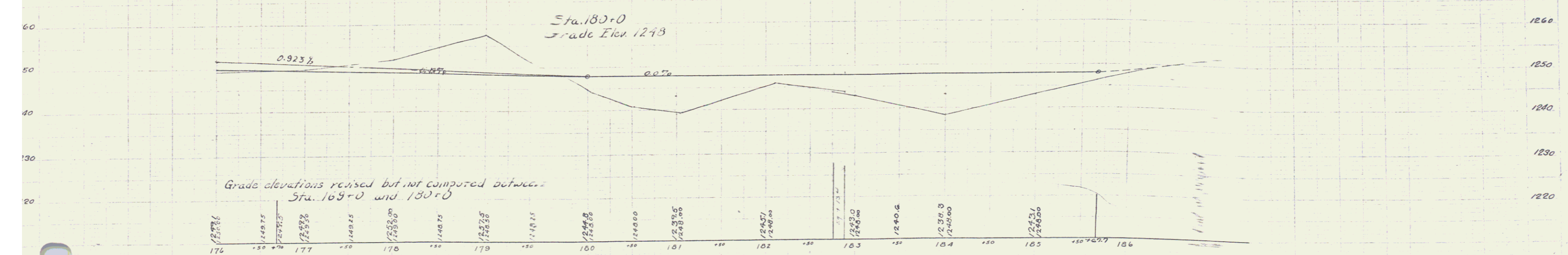
FED. ROAD DISTRICT NO. 14 SHEET NO. 22
 DIST. NO. 270 12 5 8 22



$\Delta = 59^{\circ}-4'$
 $D = 23^{\circ}-10'$
 $T = 109.95$
 $L = 56.5$
 $E = 37.1$
 $R = 267.4$

$\Delta = 54^{\circ}-0'$
 $D = 17^{\circ}-0'$
 $T = 180.7$
 $L = 377.1$
 $E = 50.2$

Sta 180+00 to Sta 185+00
 Stone from excavation to be used
 in making toe of fill on southerly side



B.M. "E" Drill hole in Rock Old "10 Elev 1256.10
 " " "9 Corner board of yellow house " 1293.59

Series F No. 27B Filed
 Sheet No. 8 of 22