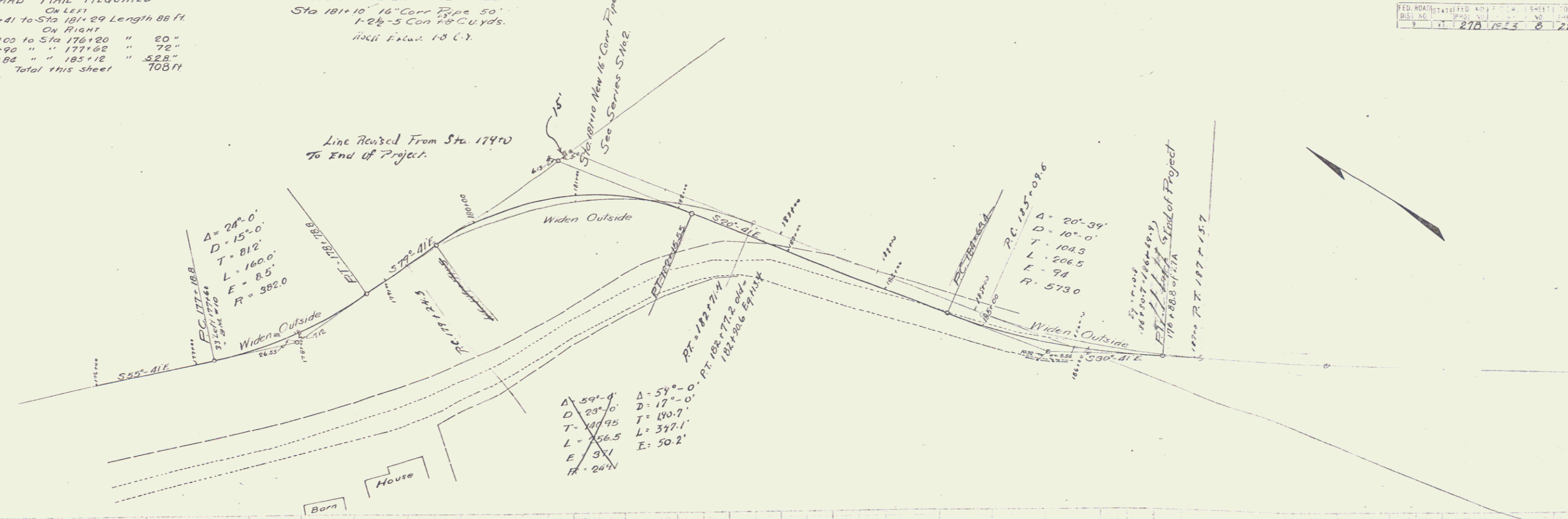


GUARD RAIL REQUIRED
 On Left
 Sta 180+41 to Sta 181+29 Length 88 Ft
 On Right
 Sta 176+00 to Sta 176+20 " 20"
 " 176+90 " " 177+62 " 72"
 " 179+82 " " 185+12 " 52"
 Total this sheet 103 Ft

NEW CULVERTS REQUIRED
 Sta 181+10 16" Corr Pipe 50'
 1-26-5 Con 78 Cu yds.
 100% Excav. 18 C.Y.

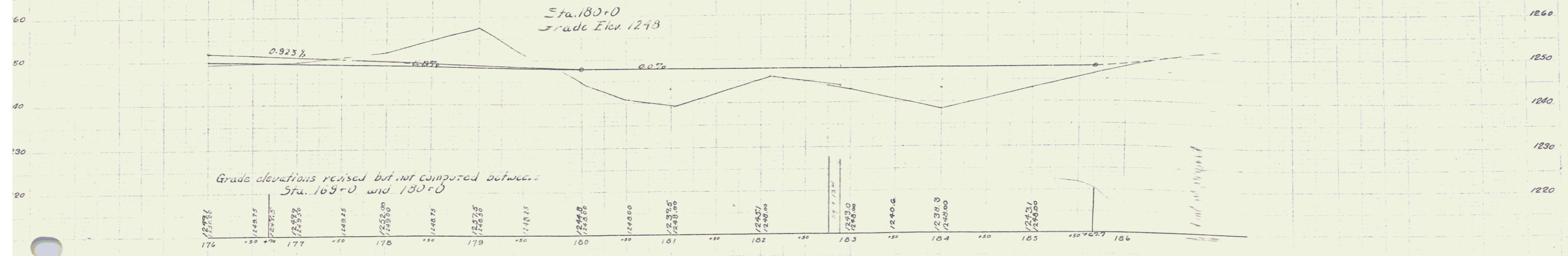
FED. ROAD DISTRICT NO. 14 SHEET NO. 22
 DIST. NO. 270 12 5 8 22



$\Delta = 59^{\circ}-4'$
 $D = 23^{\circ}-10'$
 $T = 109.95$
 $L = 56.5$
 $E = 37.1$
 $R = 267.4$

$\Delta = 54^{\circ}-0'$
 $D = 17^{\circ}-0'$
 $T = 180.7$
 $L = 377.1$
 $E = 50.2$

Sta 180+00 to Sta 185+00
 Stone from excavation to be used
 in making toe of fill on southerly side



B.M. "E" Drill hole in Rock Old "10 Elev 1256.10
 " " "9 Corner board of yellow house " 1293.59

Series F No. 27B Filed
 Sheet No. 8 of 22