

GUARD RAIL REQUIRED
 On Left
 Sta 149+00 to Sta 149+26 Length 26ft
 " 154+76 " " 153+54 " 22"
 " 156+78 " " 155+38 " 40"
 On Right
 Sta 149+00 to Sta 149+26 Length 26ft
 " 153+88 " " 153+58 " 30"
 " 156+78 " " 155+62 " 26"
 Total this sheet 656ft

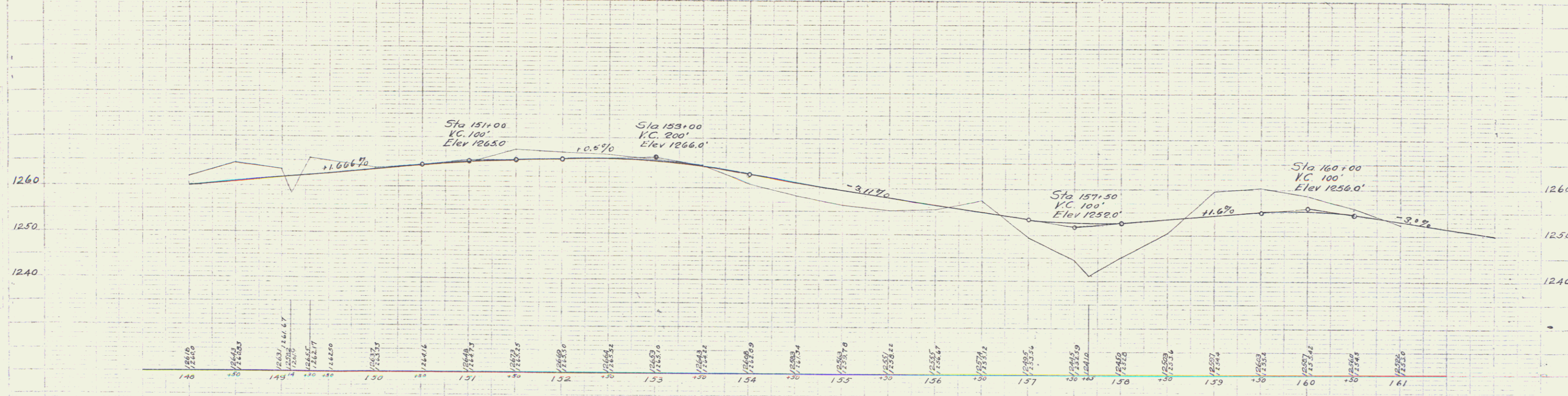
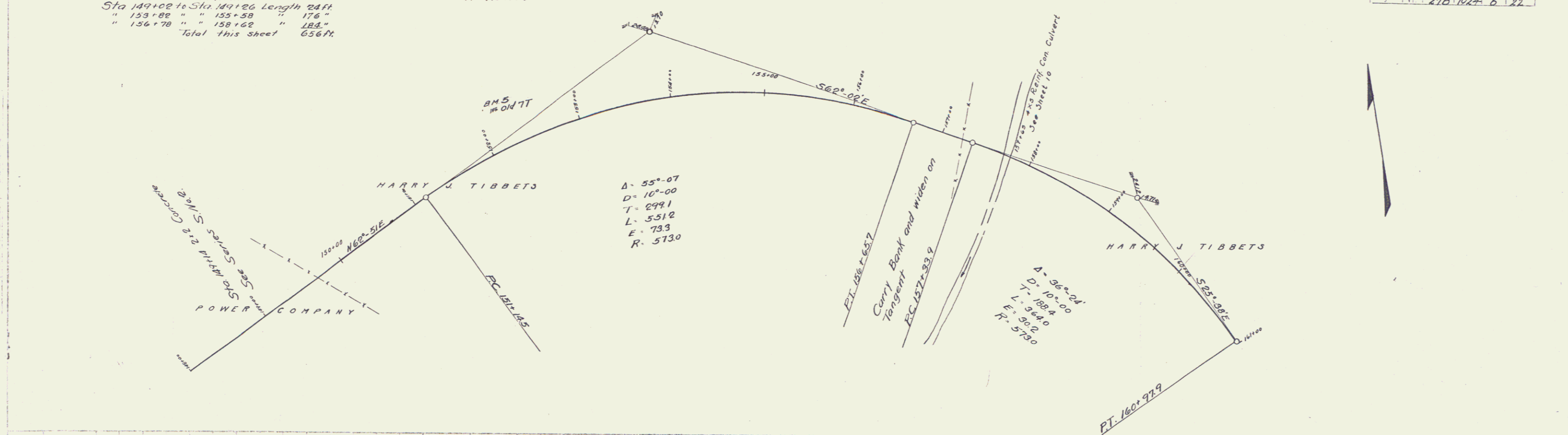
NEW CULVERTS REQUIRED
 Sta 149+10 2x2 Concrete
 1-2'x4' Con 3.2 Cuyds.
 1-2'x5' " 3.6 " "
 Earth Excav. 33.3

SUB-BASE REQUIRED
 Sta 155+75 to Sta 156+75 Length 100 Ft.

FEED	ROAD	STATE	FED. AID	FISCAL	SHEET	TOTAL
1	1	1	1	1	6	22

M.E. Walker
 12/24
 HARRIS
 12/24

M.E. Walker
 12/24
 HARRIS
 12/24



B.M. #5 Drill hole in Rock Old 77 Elev 1274.29

Series F No. 21B
 Filed
 Sheet No. 6 of 22