

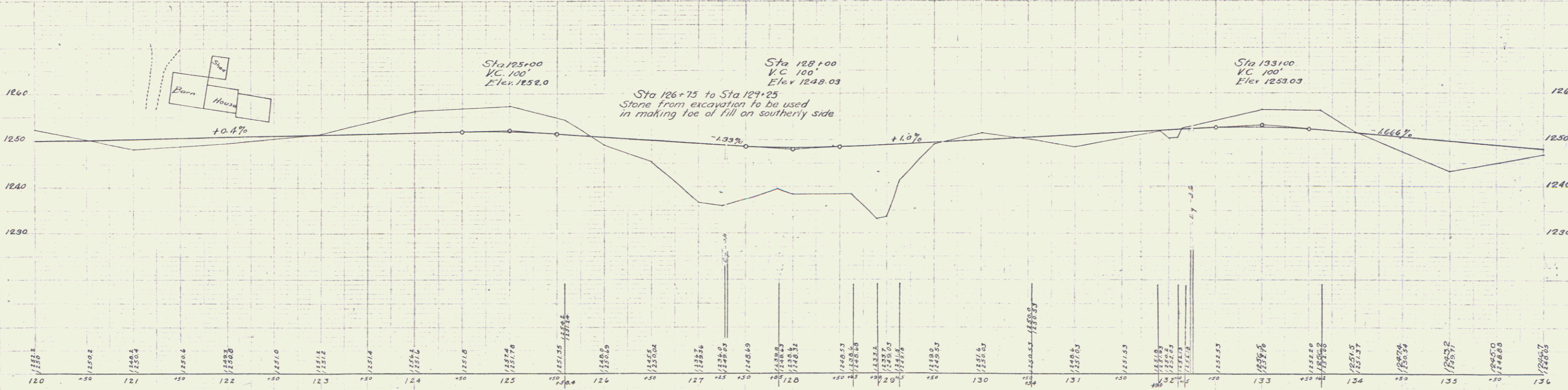
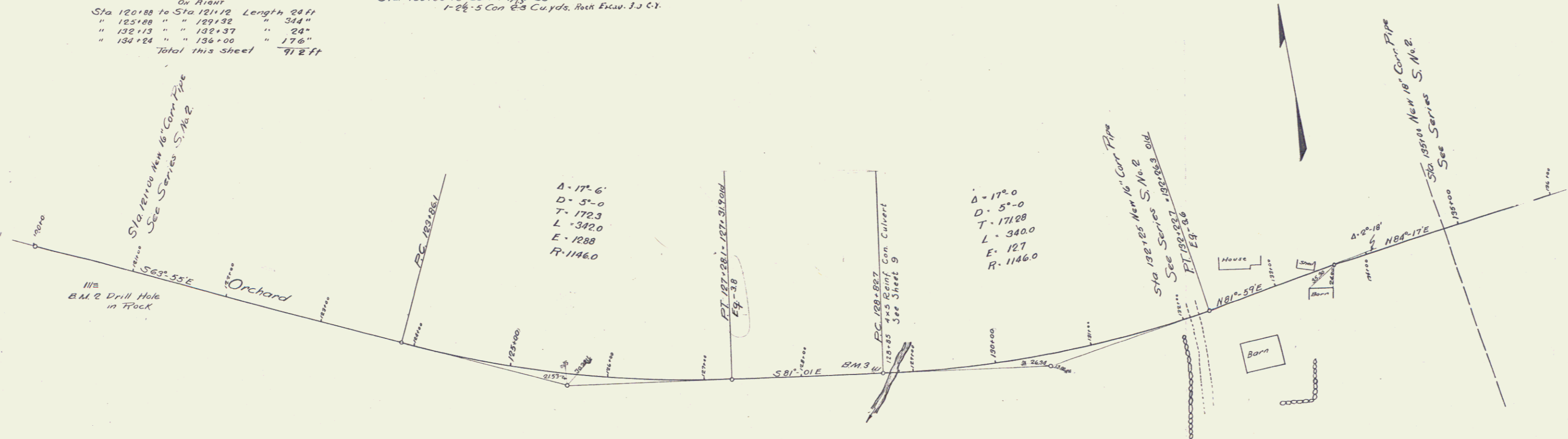
GUARD RAIL REQUIRED
 ON LEFT
 Sta 120+88 to Sta 121+12 Length 24 ft
 " 126+60 " " 129+32 " 272"
 " 132+13 " " 133+37 " 24"
 " 134+88 " " 135+12 " 24"
 ON RIGHT
 Sta 120+88 to Sta 121+12 Length 24 ft
 " 125+88 " " 129+32 " 344"
 " 132+13 " " 133+37 " 24"
 " 134+88 " " 135+12 " 176"
 Total this sheet 912 ft

NEW CULVERTS REQUIRED
 Sta 121+00 16" Cor. Pipe 28'
 Sta 132+25 16" Cor. Pipe 30'
 Sta 133+00 18" Cor. Pipe 38'
 1-2 1/2 Con 28 Cu yds. Rock Excav. 3.3 CY.
 1-2 1/2 Con 30 Cu yds. Earth Excav. 3.5 CY.

FILED	STATE	FILED	ADJ. FILED	SHEET	TOTAL
278	1923	4	22		

W.E. Miller
M.H. Mercette

W.E. Miller
M.C. Conway



BM #2 Drill hole in Rock Elev. 1246.87
 " #3 Drill hole in Rock " 1239.65

Series F No 278 Filed
 Sheet 4 of 22