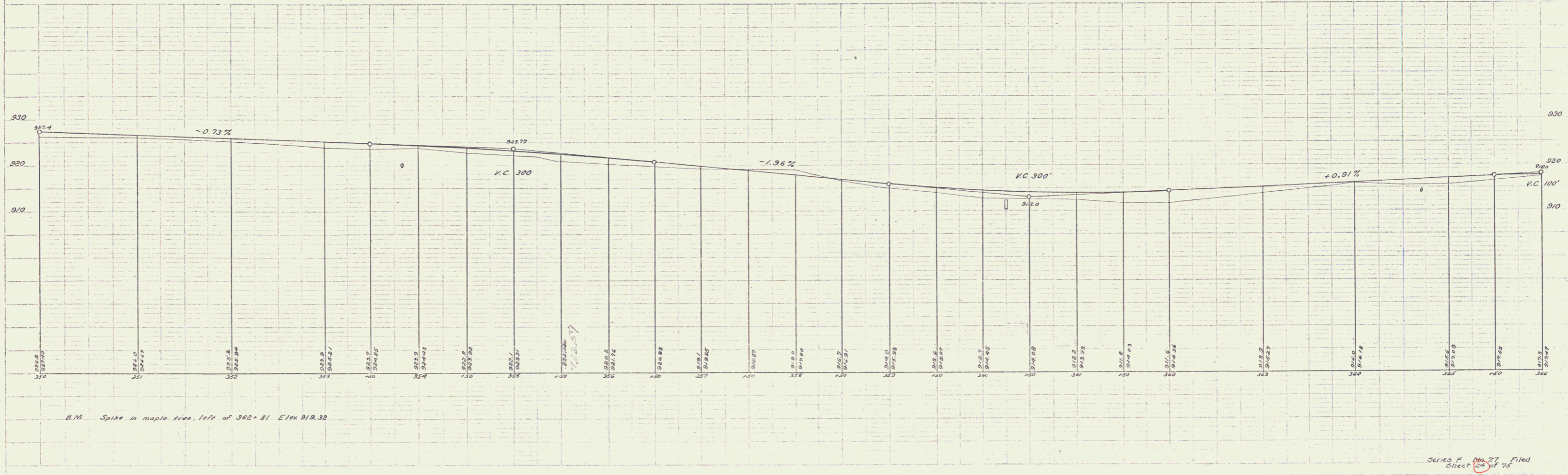
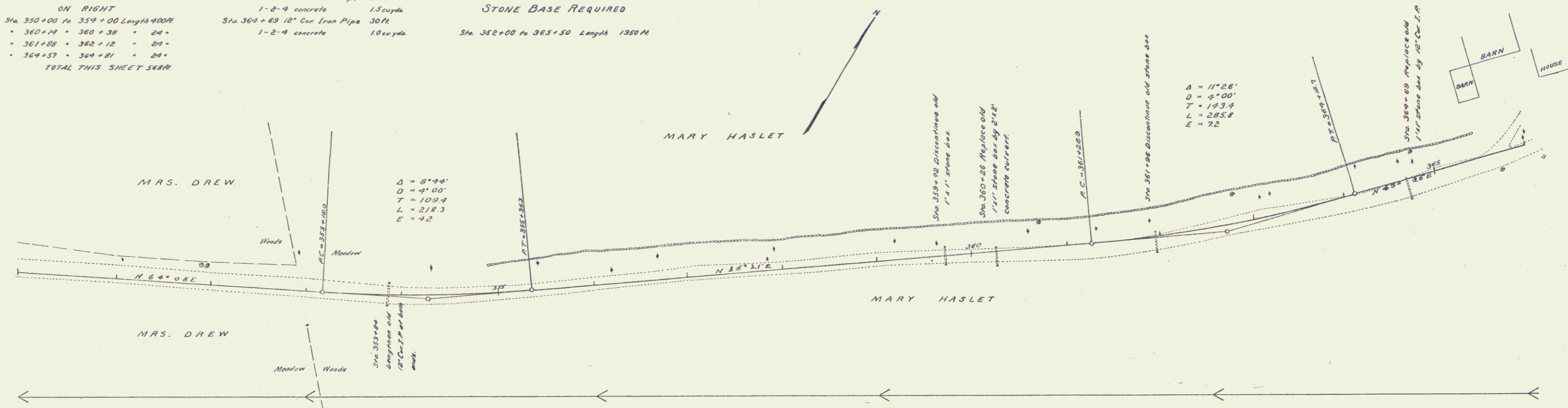


GUARD RAIL REQUIRED ON LEFT
 Sta 353+72 to 353+96 Length 24M
 * 360+14 - 360+38 * 24 *
 * 361+88 - 362+12 * 24 *
 * 364+57 - 364+81 * 24 *
ON RIGHT
 Sta 350+00 to 359+00 Length 900M
 * 360+14 - 360+38 * 24 *
 * 361+88 - 362+12 * 24 *
 * 364+57 - 364+81 * 24 *
TOTAL THIS SHEET 568M

NEW CULVERTS REQUIRED
 Sta 360+26 2'x2' Concrete
 1-2-4 concrete 5.5 cu yds
 1-3-6 " 23 "
 Sta 362+00 16" Cor. Iron Pipe 30M
 1-2-4 concrete 1.5 cu yds
 Sta 364+69 12" Cor. Iron Pipe 30M
 1-2-4 concrete 1.0 cu yds

CULVERT REPAIRS REQUIRED
 Sta 353+84 Lengthen 12" Cor. Iron Pipe 8M
 6M added to one end, 2M to the other
 1-2-4 concrete 1.1 cu yds
STONE BASE REQUIRED
 Sta 352+00 to 363+50 Length 1350M

FED. ROAD DIST. NO.	VT	ST. 152024	24	58
TOTAL SHEETS				



Series F No. 27 filed
 Sheet 24 of 75