

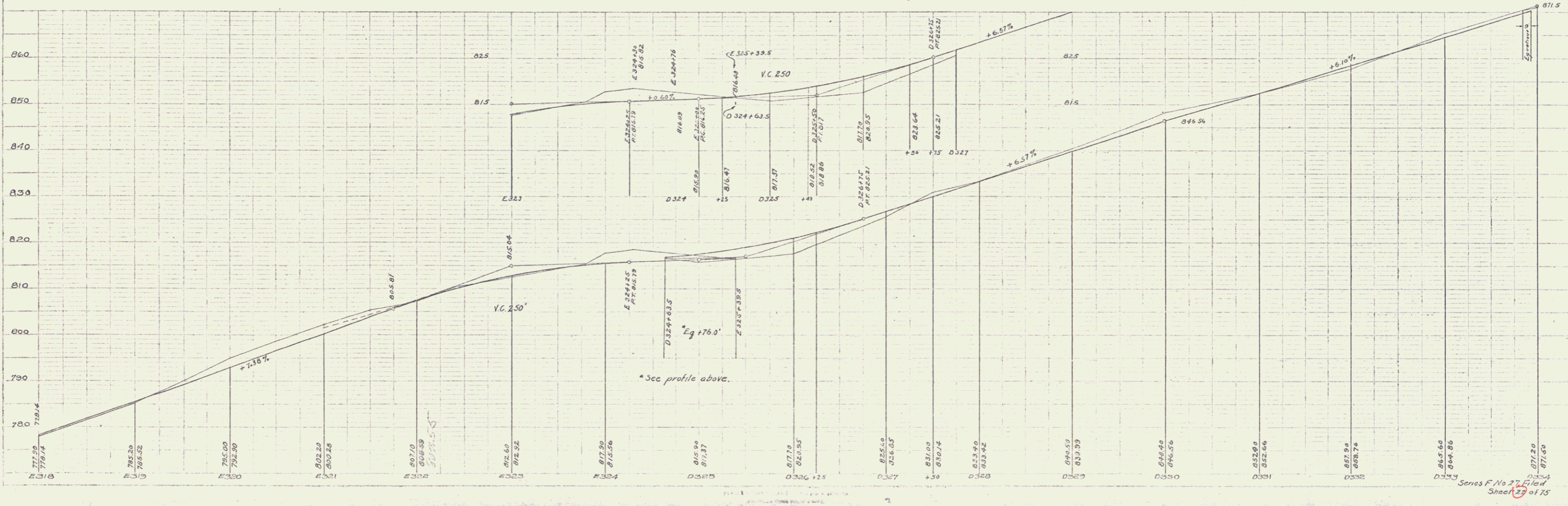
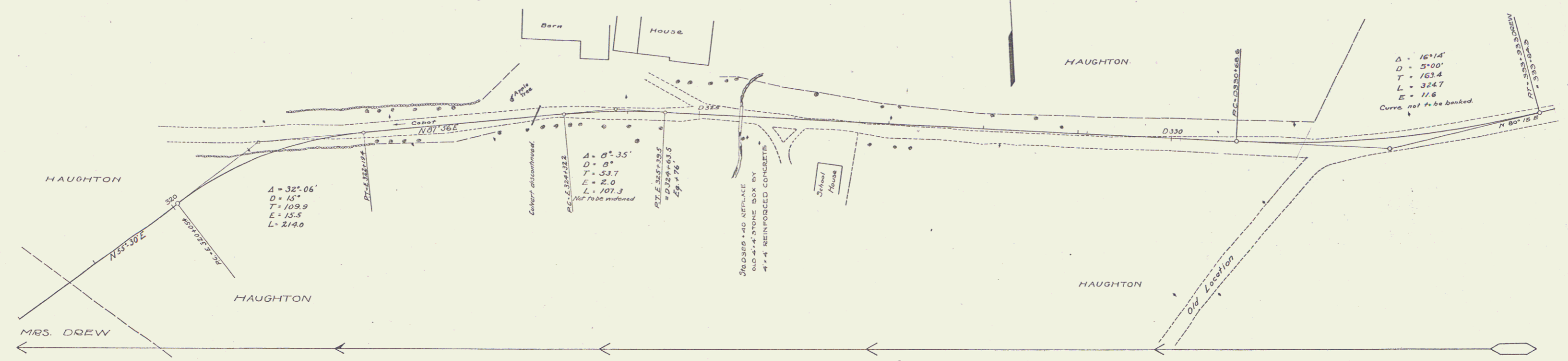
GUARD RAIL REQUIRED
 ON LEFT
 STA D. 325+08 To 326+94 LENGTH 136 FT.
 ON RIGHT
 STA D. 325+08 To 325+64 LENGTH 56'
 TOTAL THIS SHEET 192'

NEW CULVERTS REQUIRED
 STA D. 325+10 4'x4' REINFORCED CONCRETE 0.9 Cu Yds.
 1-2-4 CONCRETE 174' -
 1-3-6 " 174' -
 REINFORCING STEEL 238 LBS.

STONE BASE REQUIRED.
 STA D. 327+00 To 334+00 LENGTH 709 FT.

NO.	DATE	BY	REVISION
1	VT	27	1922

MRS. DREW



Series F No 27 of 75
 Sheet 26 of 75