

GUARD RAIL REQUIRED
ON LEFT
 Sta 215+69 to 215+93 Length 24ft
 - 217+52 - 217+76 = 24'
 - 223+51 - 223+75 = 24'
 - 225+27 - 225+51 = 24'
 - 226+51 - 226+75 = 24'
ON RIGHT
 Sta 215+69 to 215+93 Length 24ft
 - 217+52 - 217+76 = 24'
 - 223+51 - 223+75 = 24'
 - 225+27 - 225+51 = 24'
 - 226+51 - 226+75 = 24'
TOTAL THIS SHEET 240ft

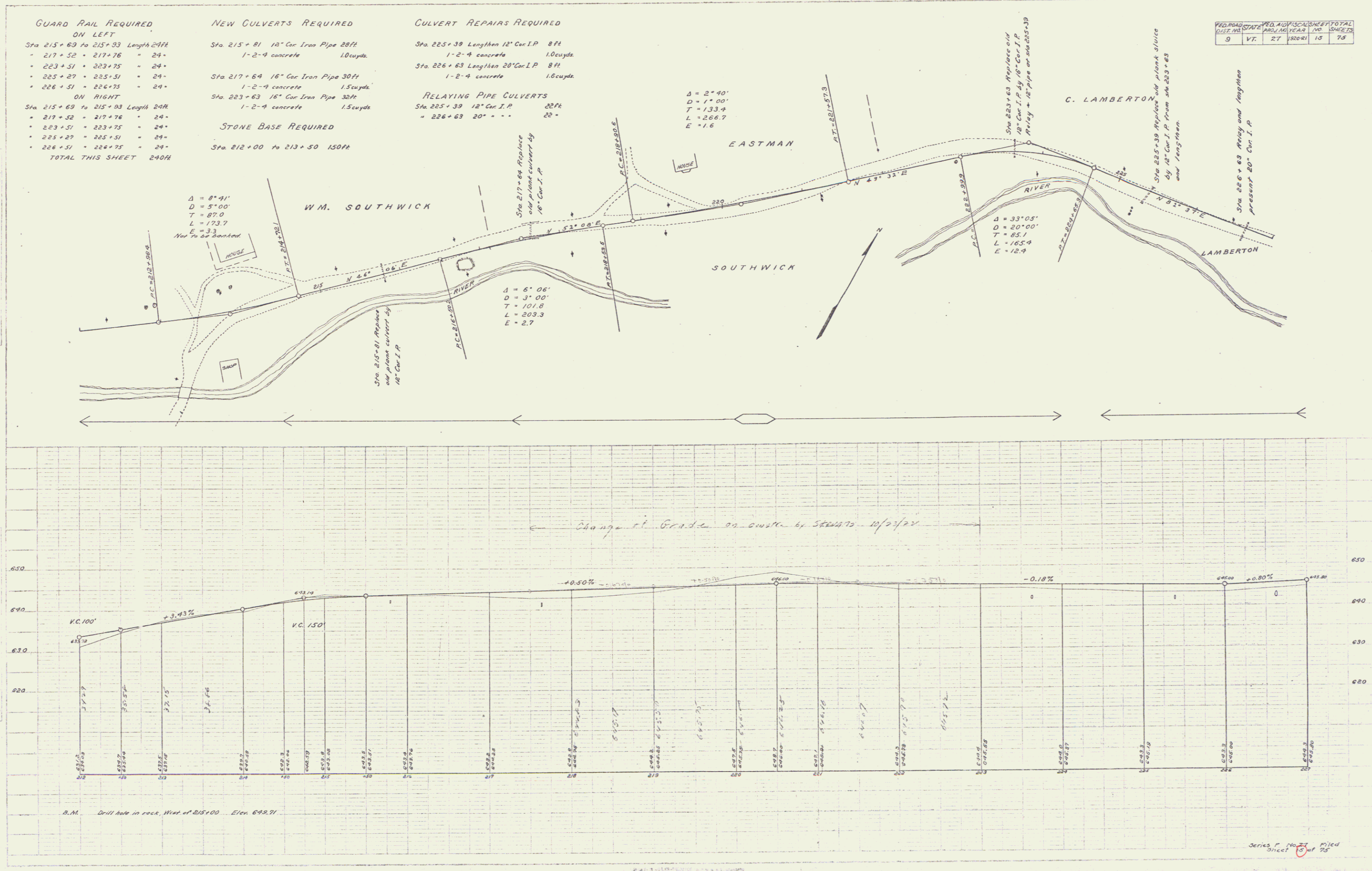
NEW CULVERTS REQUIRED
 Sta 215+81 18" Cor Iron Pipe 28ft
 1-2-4 concrete 1.0cu yds
 Sta 217+64 18" Cor Iron Pipe 30ft
 1-2-4 concrete 1.5cu yds
 Sta 223+63 16" Cor Iron Pipe 32ft
 1-2-4 concrete 1.5cu yds
STONE BASE REQUIRED
 Sta 212+00 to 213+50 150ft

CULVERT REPAIRS REQUIRED
 Sta 225+38 Length 12" Cor I.P. 8ft
 1-2-4 concrete 1.0cu yds
 Sta 226+63 Length 20" Cor I.P. 8ft
 1-2-4 concrete 1.6cu yds
RELAYING PIPE CULVERTS
 Sta 225+39 12" Cor I.P. 22ft
 = 226+63 20" = 22'

FED. ROAD DIST. NO.	STATE	FED. AID FISCAL YEAR	SHEET NO.	TOTAL SHEETS
9	VT	27	132041	13

E. P. M. Wicks
 P.E. Civil Engineer
 No. 1000
 State of Vermont
 License No. 1000

E. P. M. Wicks
 P.E. Civil Engineer
 No. 1000
 State of Vermont
 License No. 1000



Series P No. 27 filed
 Sheet 10 of 25