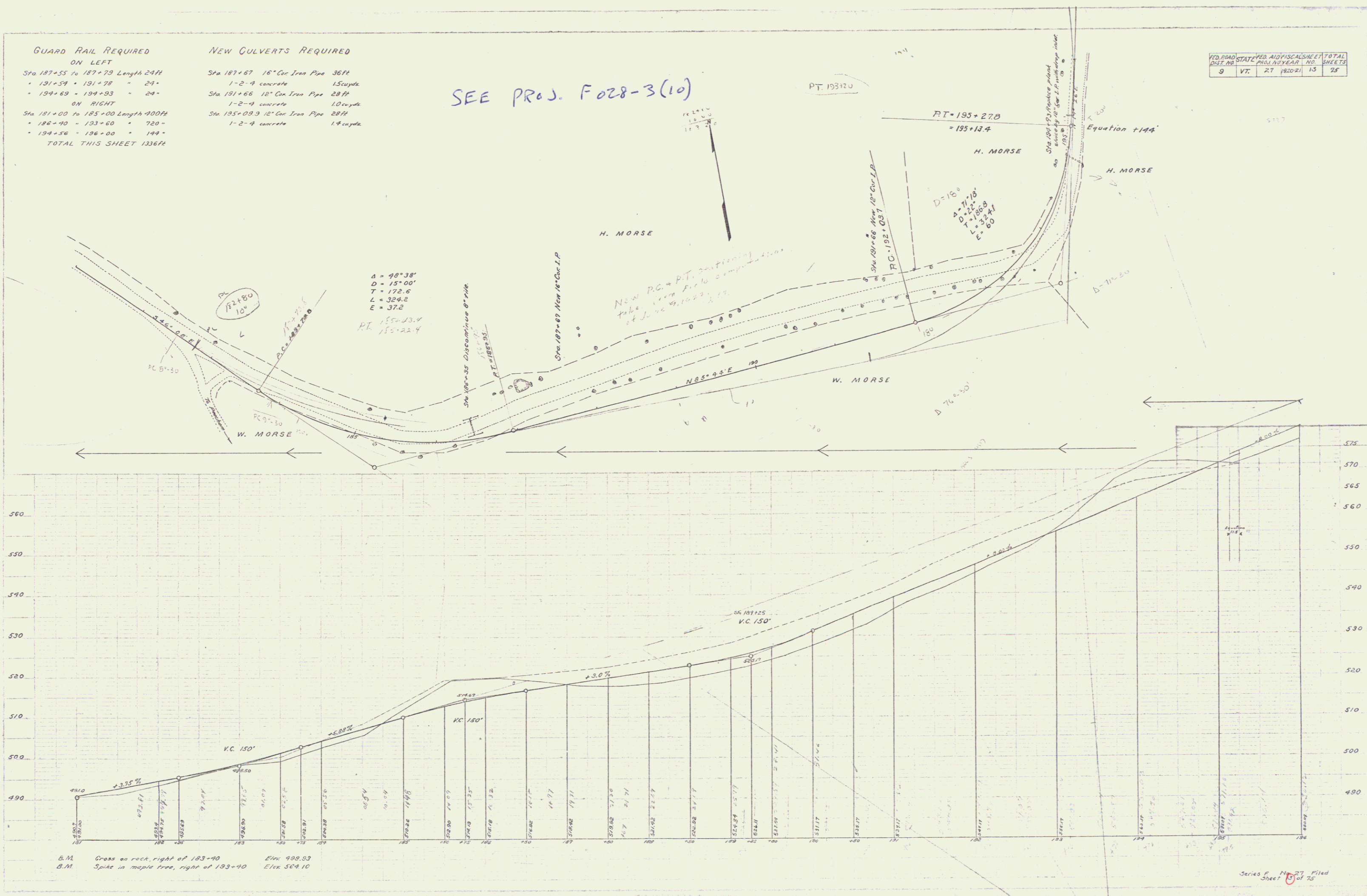


GUARD RAIL REQUIRED ON LEFT
 Sta 187+55 to 187+79 Length 24ft
 • 191+59 - 191+78 " 24"
 • 194+69 - 194+93 " 24"
ON RIGHT
 Sta 181+00 to 185+00 Length 400ft
 • 186+40 - 133+60 " 720"
 • 194+56 - 136+00 " 144"
TOTAL THIS SHEET 1336ft

NEW CULVERTS REQUIRED
 Sta 187+67 18" Con Iron Pipe 36ft
 1-2-4 concrete 15cu yds
 Sta 191+66 18" Con Iron Pipe 28ft
 1-2-4 concrete 10cu yds
 Sta 195+09.9 18" Con Iron Pipe 28ft
 1-2-4 concrete 14cu yds

SEE PROJ. F028-3(10)

NO.	DATE	BY	REVISION
1	10/20/21	VT	1.5
2	10/20/21	VT	2.5



C. Morse
 Civil Engineer
 No. 12345
 State of Vermont
 License No. 12345

E. Morse
 Civil Engineer
 No. 12345
 State of Vermont
 License No. 12345

B.M. Cross on rock, right of 183+40 Elev 488.03
 B.M. Spike in maple tree, right of 193+40 Elev 504.10

Series F, No. 27 Filed
 Sheet 16 of 26