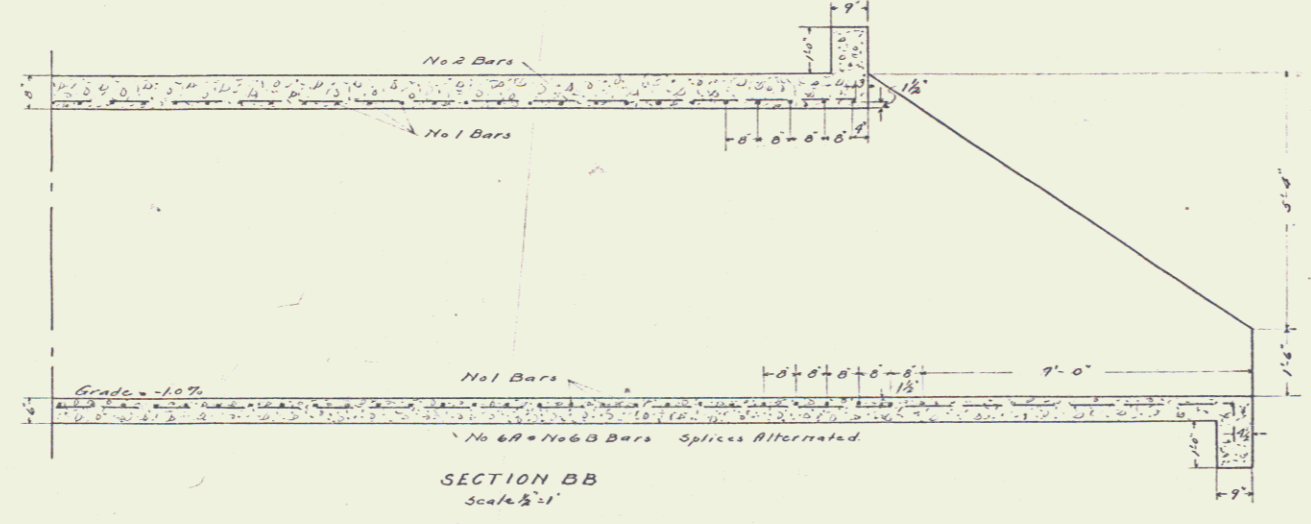
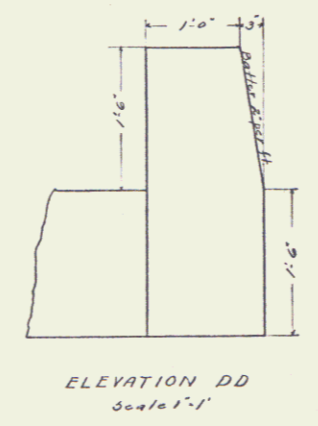
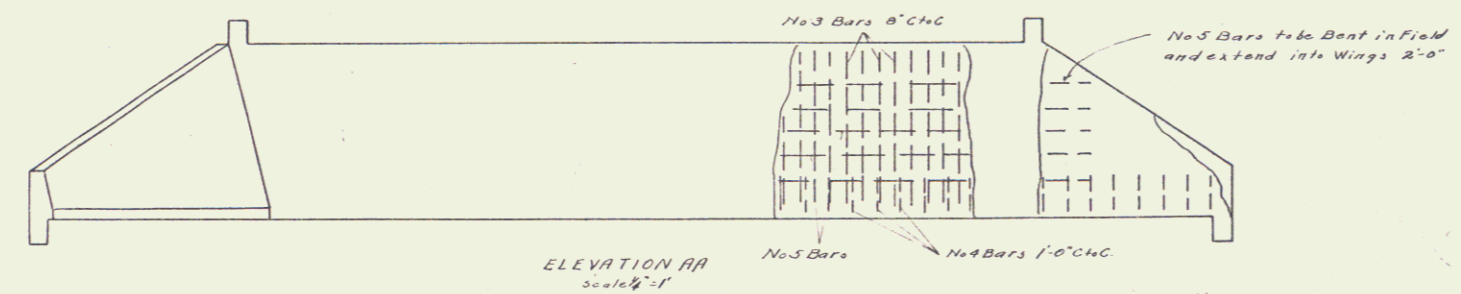
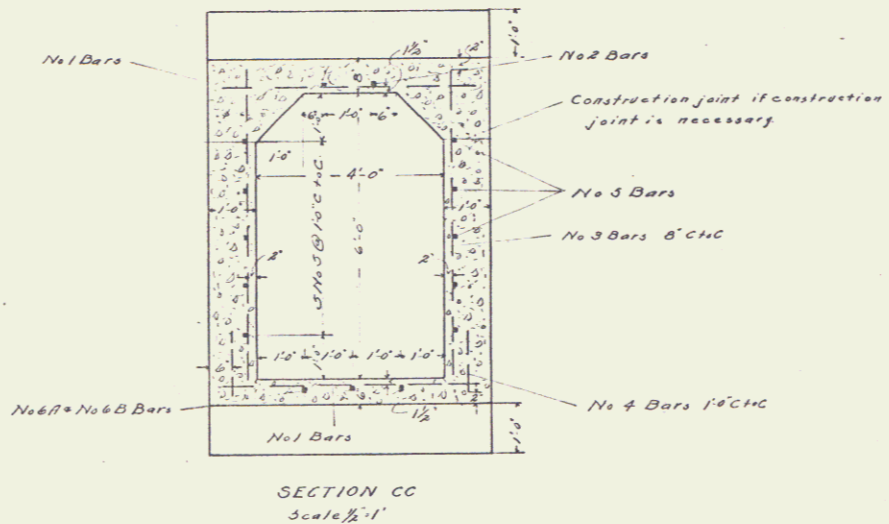
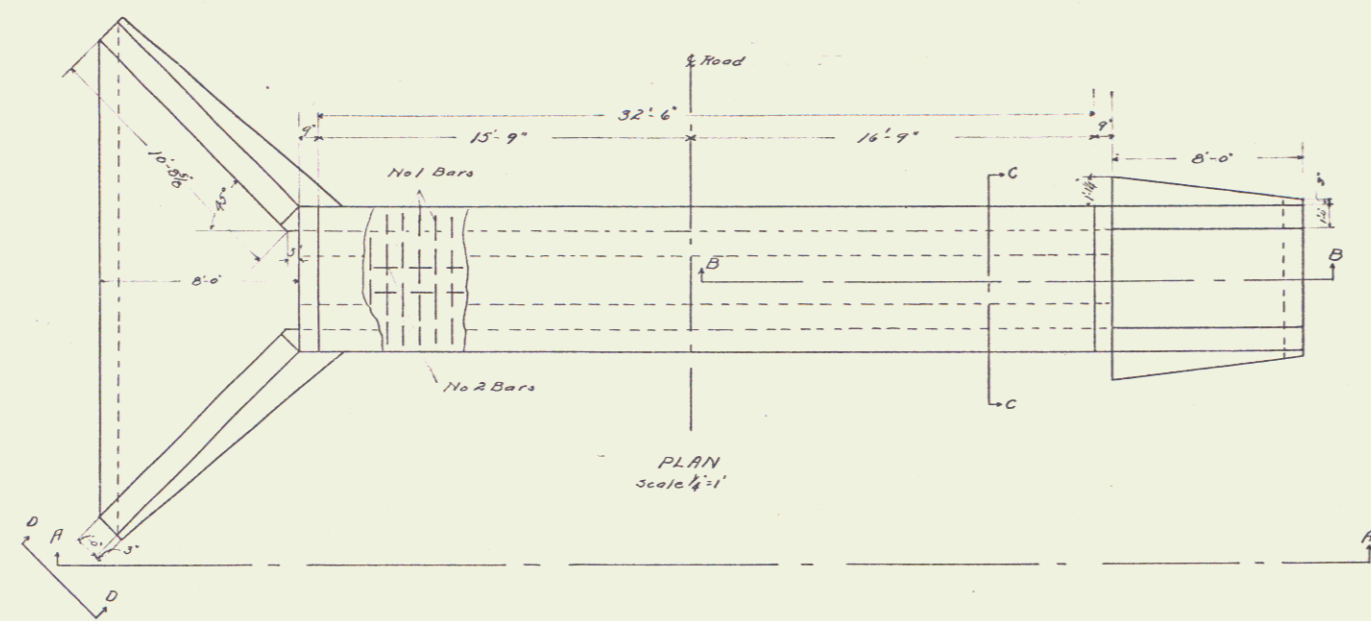


FED. ROAD DIST. NO.	STAT.	FED. AID PROJ. NO.	FISCAL YEAR	SHEET NO.	TOTAL SHEETS
VT.	27	127	50A	16	25



STEEL SCHEDULE			
No 1	5'-6"	106 Reqd.	
No 2	33'-4"	2 Reqd.	
No 3	6'-6"	102 Reqd.	
No 4	1'-6"	96 Reqd.	
No 5	38'-0"	10 Reqd.	
No 6A	Length 33'-10"		
No 6B	Length 20'-10"	3 Reqd.	
No 6C	Length 20'-0"	3 Reqd.	

All steel to be deformed bars.

PLAN
OF
CULVERT
STATION 127+50A
FED. AID PROJECT NO 27
CABOT, VT.

MATERIAL	
Steel	1701
1-2-4 Concrete in Box	25.5 cu yds
" " " Wings	12.5 "
Total	378

US#2, B25 over Brook

Designed by H.J. Renshaw
Traced by G.L. P... 11/1/22
Checked by G.L. P... 1/1/23
Series F No. 17, filed
Sheet 16 of 25