

**GUARD RAIL REQUIRED ON LEFT**

Sta 153+82.75 to Sta 160+22.4 Length 639.65 FT  
 - 164+88.75 - 165+12.75 - 24'  
 - 168+03.75 - 168+27.75 - 24'  
 - 170+88.75 - 171+12.75 - 24'

**ON RIGHT**

Sta 153+40.75 to Sta 161+00.75 Length 760 FT  
 - 164+88.75 - 165+12.75 - 24'  
 - 167+10.75 - 167+30 - 40.0'

TOTAL THIS SHEET 728 FT

**NEW CULVERTS REQUIRED**

Sta 160+15.75 2x2 Concrete Box  
 1-2x4 Concrete 7.5 cu yd  
 1-2x5 Concrete 9.3 "

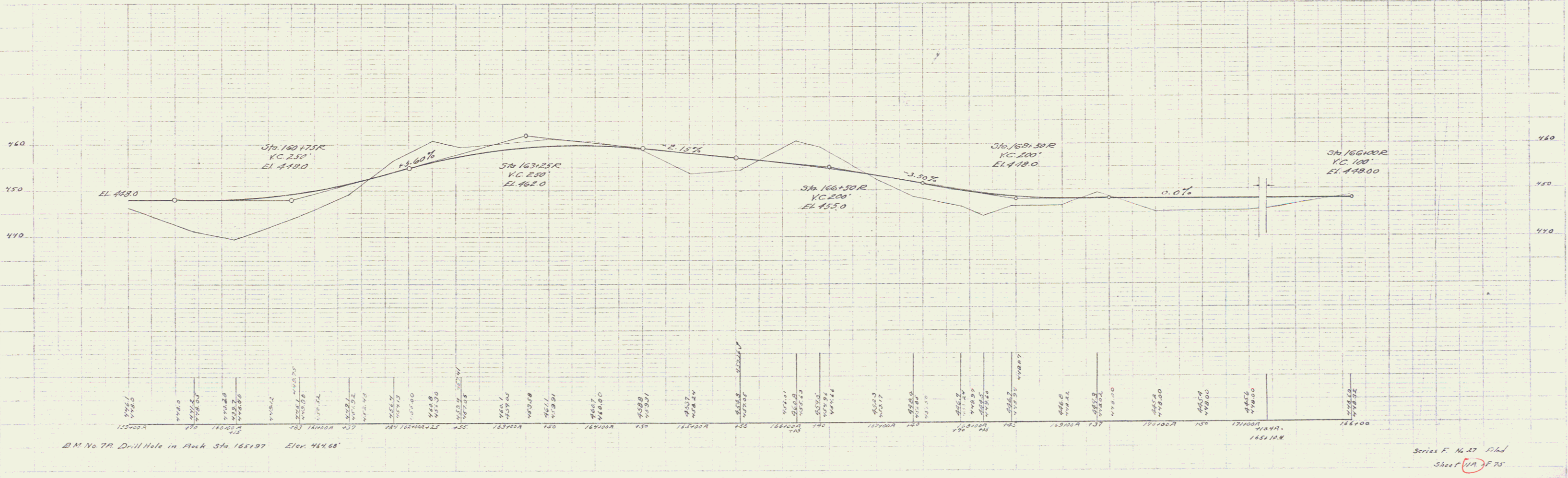
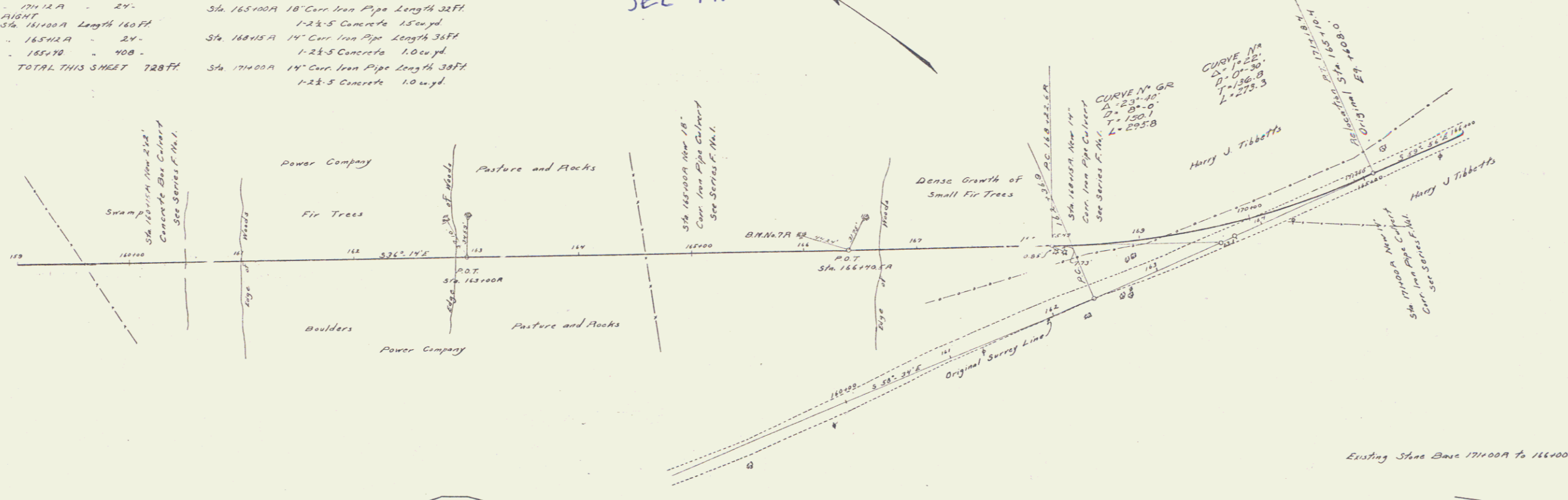
Sta 165+10.75 18" Cur. Iron Pipe Length 32 FT  
 1-2x5 Concrete 1.5 cu yd

Sta 168+15.75 14" Cur. Iron Pipe Length 36 FT  
 1-2x5 Concrete 1.0 cu yd

Sta 174+00.75 14" Cur. Iron Pipe Length 33 FT  
 1-2x5 Concrete 1.0 cu yd

SEE PROJ. F-228-3(10)

NO. SHEETS	DATE	BY	CHKD.	SCALE	SHEET NO.	TOTAL SHEETS
9	VT	27	22	1/4"	11A	25



Series F. No. 27. Plan  
 Sheet (11A) of 25