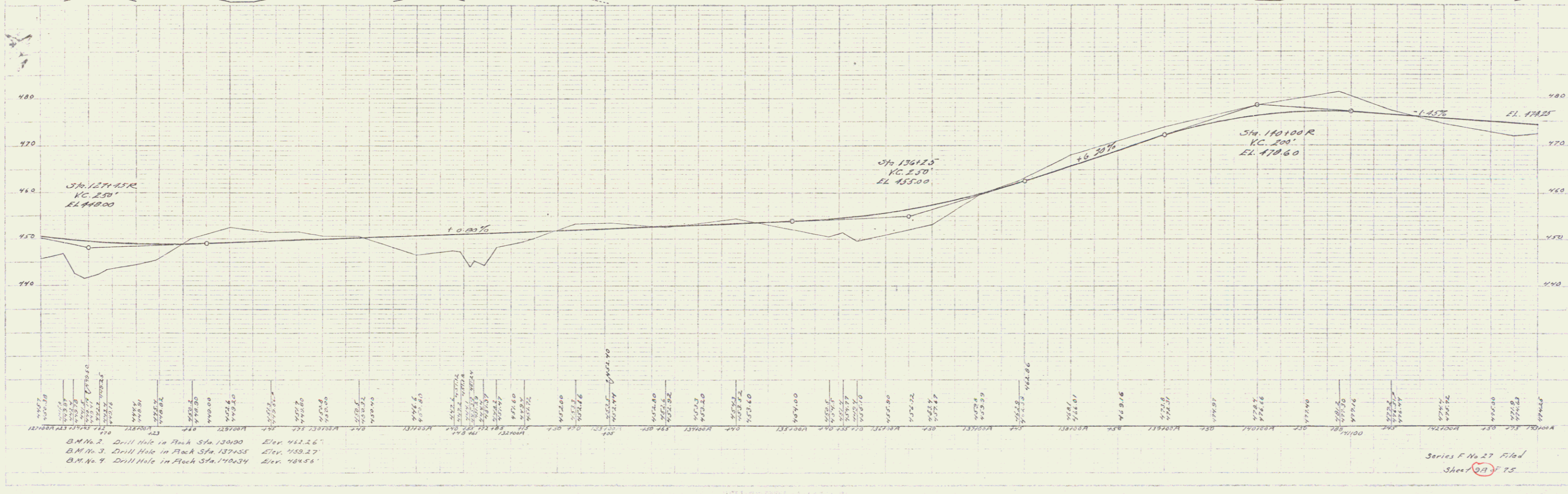
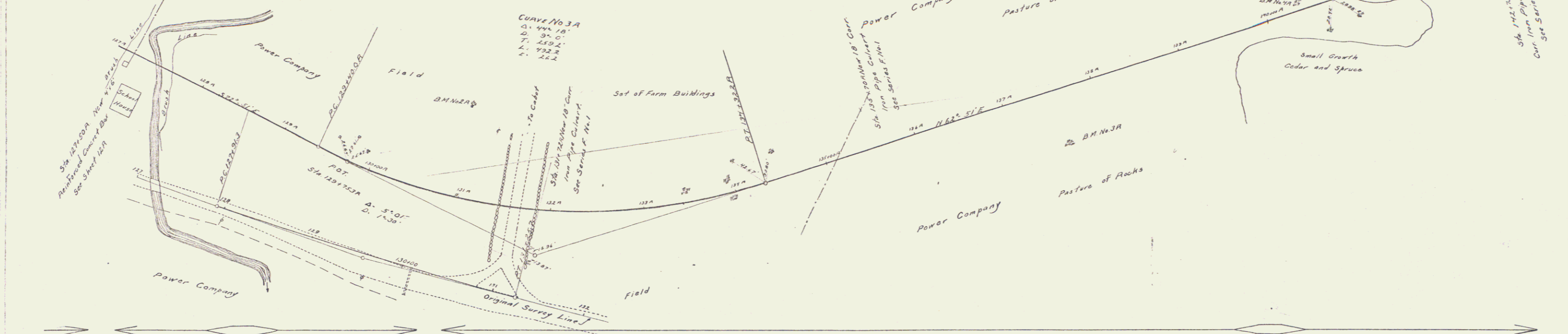


GUARD RAIL REQUIRED
ON LEFT
 Sta 127+20.76 to 128+00.00 Length 80 FT
 - 131+60.76 - 131+84.76 - 24 -
 - 135+58.76 - 135+82.76 - 24 -
 - 142+63.76 - 142+87.76 - 24 -
ON RIGHT
 Sta 127+20.76 - 128+24.76 Length 104 FT
 - 130+50.76 - 132+72.76 - 192 -
 - 135+00.76 - 136+76.76 - 176 -
 - 142+63.76 - 142+87.76 - 24 -
TOTAL THIS SHEET

NEW CULVERTS REQUIRED
 Sta 134+22.76 18" Corr. Iron Pipe Length 40 FT
 1-2 1/2 S Concrete 1.5 cu yd
 Sta 135+70.76 18" Corr. Iron Pipe Length 36 FT
 1-2 1/2 S Concrete 1.5 cu yd
 Sta 142+75.76 14" Corr. Iron Pipe Length 30 FT
 1-2 1/2 S Concrete 1.5 cu yd

SUB-BASE REQUIRED
 Sta 137+00.76 to Sta 142+00.76 Length 500 FT

YEAR	DATE	BY	SCALE	SHEET	TOTAL
1927	11-27	W. J. H.	1" = 40'	27	37



STATION	ELEVATION	REMARKS
127+00.00	425.00	BM No. 1
127+20.76	425.00	
127+40.52	425.00	
127+60.28	425.00	
127+80.04	425.00	
128+00.00	425.00	
128+20.76	425.00	
128+40.52	425.00	
128+60.28	425.00	
128+80.04	425.00	
129+00.00	425.00	
129+20.76	425.00	
129+40.52	425.00	
129+60.28	425.00	
129+80.04	425.00	
130+00.00	425.00	
130+20.76	425.00	
130+40.52	425.00	
130+60.28	425.00	
130+80.04	425.00	
131+00.00	425.00	
131+20.76	425.00	
131+40.52	425.00	
131+60.28	425.00	
131+80.04	425.00	
132+00.00	425.00	
132+20.76	425.00	
132+40.52	425.00	
132+60.28	425.00	
132+80.04	425.00	
133+00.00	425.00	
133+20.76	425.00	
133+40.52	425.00	
133+60.28	425.00	
133+80.04	425.00	
134+00.00	425.00	
134+20.76	425.00	
134+40.52	425.00	
134+60.28	425.00	
134+80.04	425.00	
135+00.00	425.00	
135+20.76	425.00	
135+40.52	425.00	
135+60.28	425.00	
135+80.04	425.00	
136+00.00	425.00	
136+20.76	425.00	
136+40.52	425.00	
136+60.28	425.00	
136+80.04	425.00	
137+00.00	425.00	
137+20.76	425.00	
137+40.52	425.00	
137+60.28	425.00	
137+80.04	425.00	
138+00.00	425.00	
138+20.76	425.00	
138+40.52	425.00	
138+60.28	425.00	
138+80.04	425.00	
139+00.00	425.00	
139+20.76	425.00	
139+40.52	425.00	
139+60.28	425.00	
139+80.04	425.00	
140+00.00	425.00	
140+20.76	425.00	
140+40.52	425.00	
140+60.28	425.00	
140+80.04	425.00	
141+00.00	425.00	
141+20.76	425.00	
141+40.52	425.00	
141+60.28	425.00	
141+80.04	425.00	
142+00.00	425.00	

BM No. 2 Drill Hole in Rock Sta 130+00 Elev 452.26'
 BM No. 3 Drill Hole in Rock Sta 132+35 Elev 459.27'
 BM No. 4 Drill Hole in Rock Sta 140+34 Elev 484.58'

Series F No 27 Filed
 Sheet 27 of 25