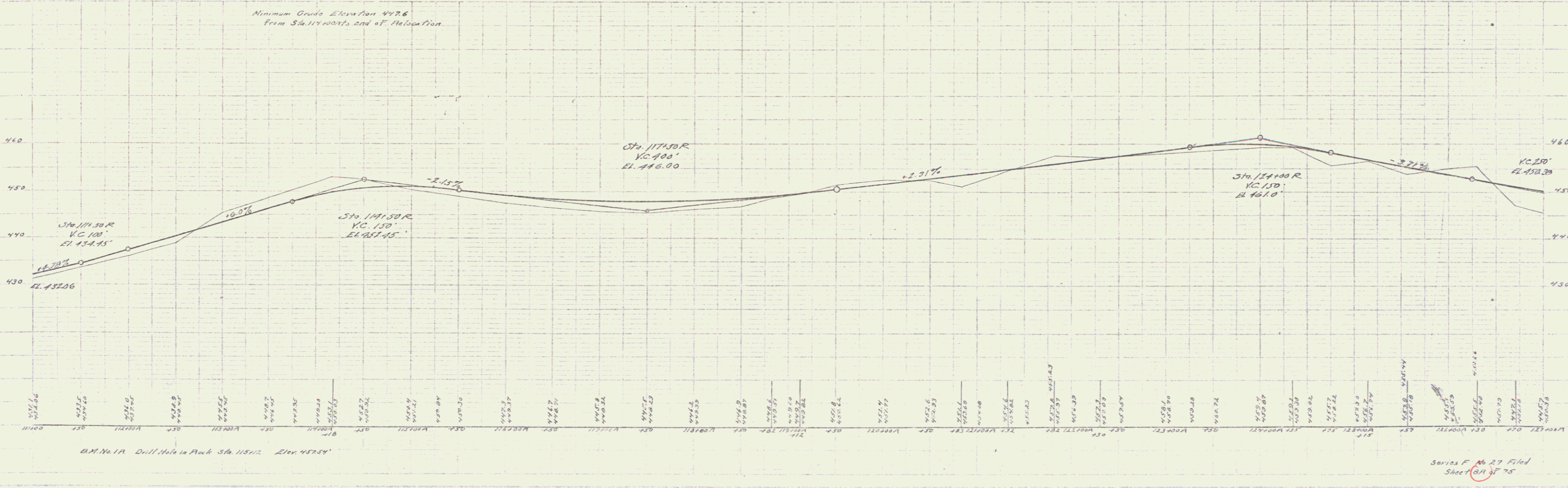
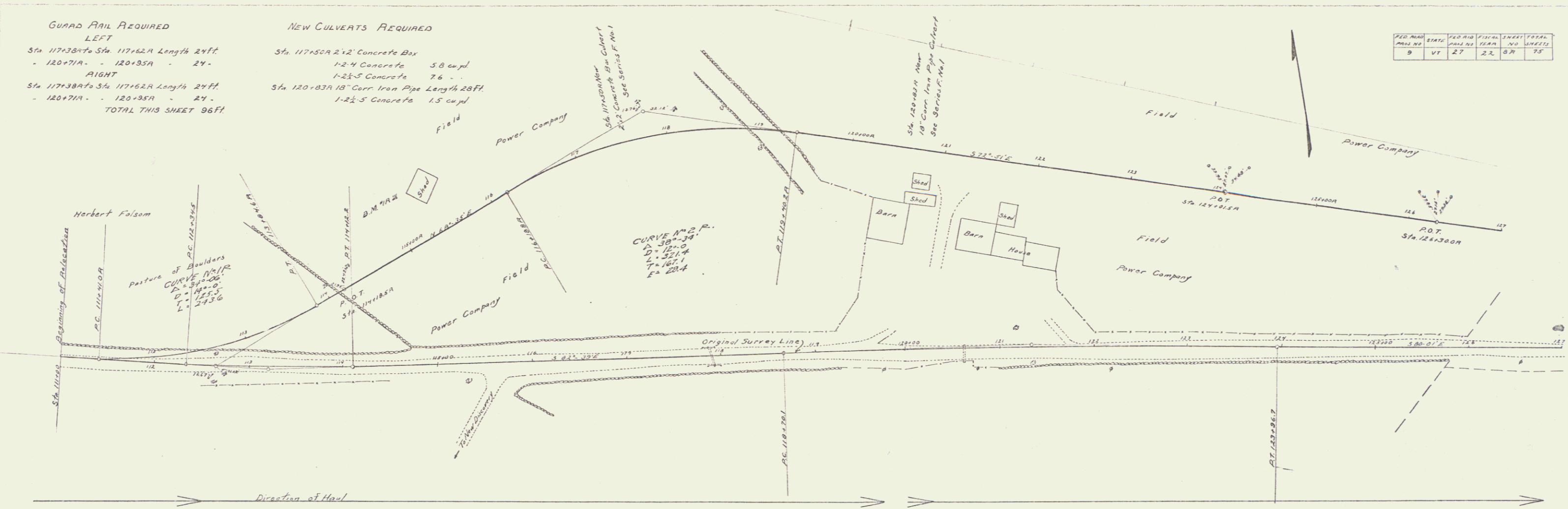


**GUARD RAIL REQUIRED**  
**LEFT**  
 Sta 117+38.7 to Sta 117+62.4 Length 24ft  
 - 120+71A - 120+93A - 24 -  
**RIGHT**  
 Sta 117+38.7 to Sta 117+62.4 Length 24ft  
 - 120+71A - 120+93A - 24 -  
**TOTAL THIS SHEET 96ft.**

**NEW CULVERTS REQUIRED**  
 Sta 117+50A 24" Concrete Box  
 1-2' 4" Concrete 5.8 cu yd  
 1-2' 5" Concrete 7.6  
 Sta 120+03A 18" Corr. Iron Pipe Length 28ft.  
 1-2' 5" Concrete 1.5 cu yd

| PROJ. NO. | DATE | NO. OF SHEETS | TOTAL SHEETS |
|-----------|------|---------------|--------------|
| 9         | VT   | 27            | 27           |



Series F No 27 Filed  
 Sheet 8 of 75