

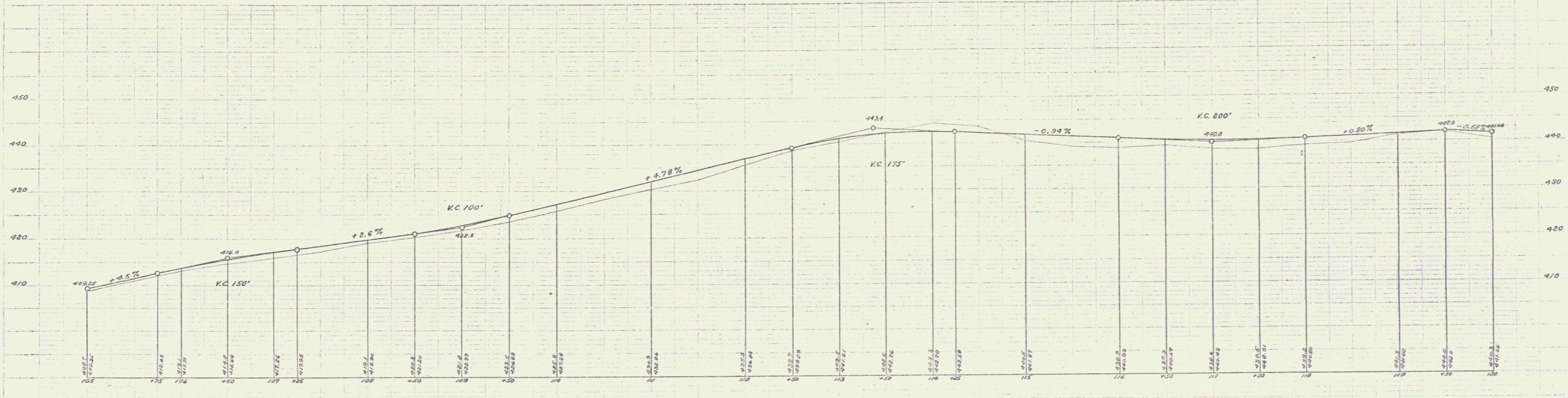
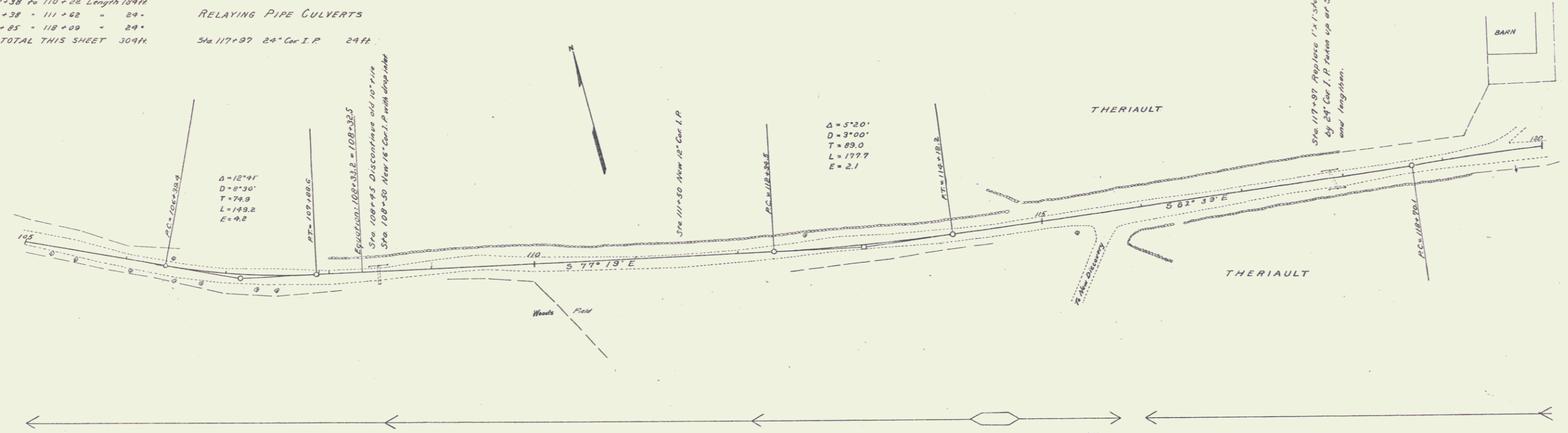
GUARD RAIL REQUIRED ON LEFT
 Sta. 108+38 to 108+62 Length 24ft
 - 111+38 - 111+62 = 24'
 - 117+85 - 118+09 = 24'
ON RIGHT
 Sta. 108+38 to 110+22 Length 184ft
 - 111+38 - 111+62 = 24'
 - 117+85 - 118+09 = 24'
TOTAL THIS SHEET 304ft

CULVERT REPAIRS REQUIRED
 Sta. 117+97 24" Cor. I.P.
 Lengthen 4.0ft
 1-2-4 concrete 1.6cu yds.
 1-2-4 concrete 1.6cu yds.

NEW CULVERTS REQUIRED
 Sta. 108+50 18" Cor. I.P. with drop inlet 28ft
 1-2-4 concrete 1.6cu yds.
 Sta. 111+50 12" Cor. I.P.
 1-2-4 concrete 1.1cu yds.

RELAYING PIPE CULVERTS
 Sta. 117+97 24" Cor. I.P. 24ft

REG. NO.	DATE	NO. AND VISCAL. SHEET	TOTAL SHEETS
9	VT	27 180021	25



B.M. Spike in elm tree, right of 106+50 Elev. 413.88
 B.M. Spike in maple tree, right of 115+33 Elev. 441.80