

**GUARD RAIL REQUIRED ON LEFT**  
 Sta. 90+88 to 91+12 Length 24ft  
 - 96+73 - 96+97 - 24'  
 - 100+88 - 101+12 - 24'  
**ON RIGHT**  
 Sta. 90+88 to 91+12 Length 24ft  
 - 92+25 - 98+25 - 600'  
 - 93+25 - 104+69 - 544'  
**TOTAL THIS SHEET 1240ft**

**NEW CULVERTS REQUIRED**  
 Sta. 98+85 2'x2' Concrete 6.8cu yds  
 1-2-4 concrete 8.6 -  
 1-3-6 - 1.7cu yds  
 Sta. 101+00 16" Cor. I. P. 30ft  
 1-2-4 concrete 1.5cu yds  
 Sta. 103+50 12" Cor. I. P. 32ft  
 1-2-4 concrete 1.0cu yds

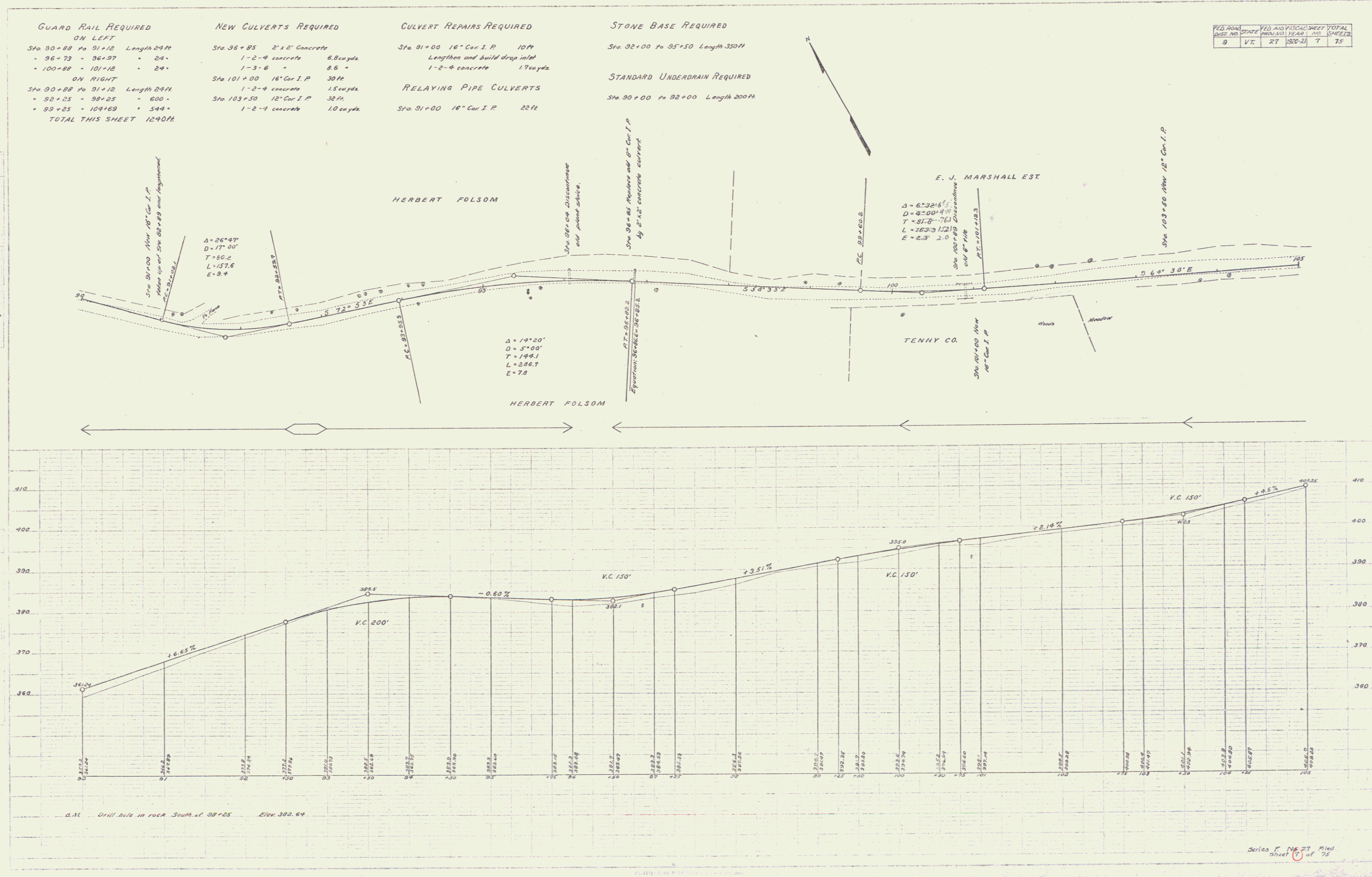
**CULVERT REPAIRS REQUIRED**  
 Sta. 91+00 18" Cor. I. P. 10ft  
 Lengthen and build drop inlet  
 1-2-4 concrete 1.7cu yds  
**RELAYING PIPE CULVERTS**  
 Sta. 91+00 16" Cor. I. P. 22ft

**STONE BASE REQUIRED**  
 Sta. 92+00 to 95+50 Length 350ft  
**STANDARD UNDERDRAIN REQUIRED**  
 Sta. 90+00 to 92+00 Length 200ft

FIELD NO.	STATE	FED. AID PROJ. NO.	SHEET NO.	TOTAL SHEETS
9	Vt.	27	520-21	7

E. J. Welch  
 C. H. Day  
 1927  
 1928  
 1929  
 1930  
 1931  
 1932  
 1933  
 1934  
 1935  
 1936  
 1937  
 1938  
 1939  
 1940  
 1941  
 1942  
 1943  
 1944  
 1945  
 1946  
 1947  
 1948  
 1949  
 1950  
 1951  
 1952  
 1953  
 1954  
 1955  
 1956  
 1957  
 1958  
 1959  
 1960  
 1961  
 1962  
 1963  
 1964  
 1965  
 1966  
 1967  
 1968  
 1969  
 1970  
 1971  
 1972  
 1973  
 1974  
 1975  
 1976  
 1977  
 1978  
 1979  
 1980  
 1981  
 1982  
 1983  
 1984  
 1985  
 1986  
 1987  
 1988  
 1989  
 1990  
 1991  
 1992  
 1993  
 1994  
 1995  
 1996  
 1997  
 1998  
 1999  
 2000

E. J. Welch  
 A. J. Johnson  
 M. E. Conkern  
 1927  
 1928  
 1929  
 1930  
 1931  
 1932  
 1933  
 1934  
 1935  
 1936  
 1937  
 1938  
 1939  
 1940  
 1941  
 1942  
 1943  
 1944  
 1945  
 1946  
 1947  
 1948  
 1949  
 1950  
 1951  
 1952  
 1953  
 1954  
 1955  
 1956  
 1957  
 1958  
 1959  
 1960  
 1961  
 1962  
 1963  
 1964  
 1965  
 1966  
 1967  
 1968  
 1969  
 1970  
 1971  
 1972  
 1973  
 1974  
 1975  
 1976  
 1977  
 1978  
 1979  
 1980  
 1981  
 1982  
 1983  
 1984  
 1985  
 1986  
 1987  
 1988  
 1989  
 1990  
 1991  
 1992  
 1993  
 1994  
 1995  
 1996  
 1997  
 1998  
 1999  
 2000



Series F No. 27 Final Sheet 6 of 78