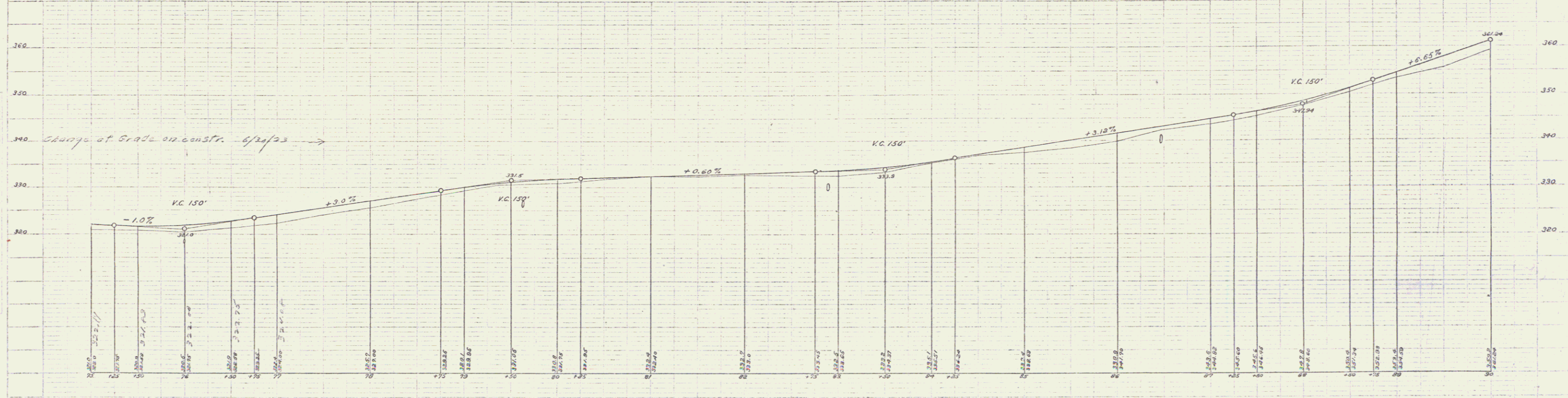
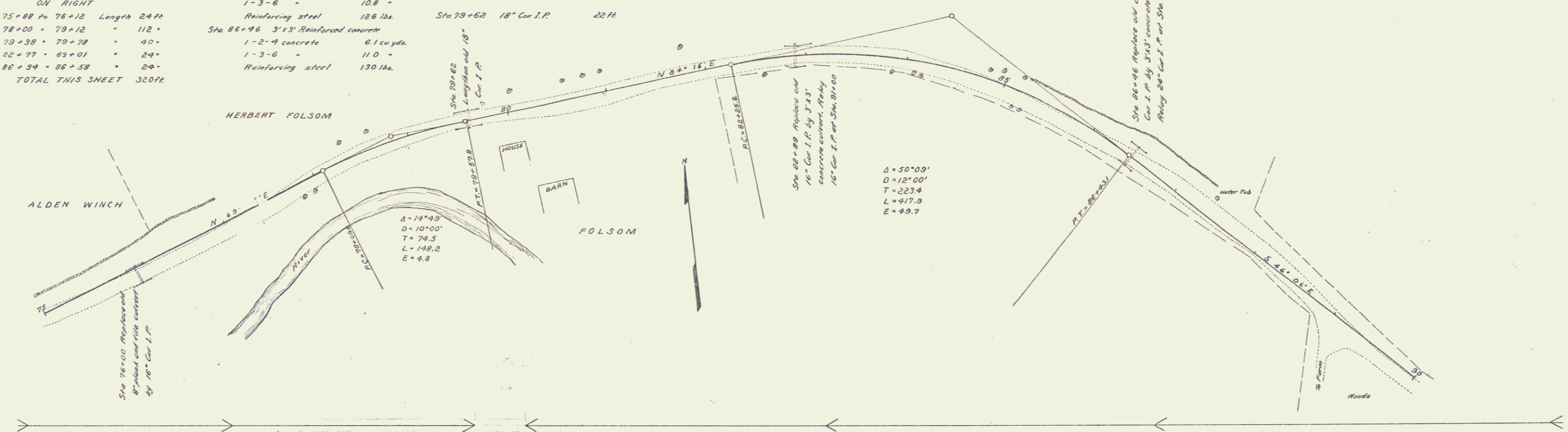


GUARD RAIL REQUIRED	NEW CULVERTS REQUIRED	CULVERT REPAIRS REQUIRED	STONE BASE REQUIRED	STANDARD UNDERDRAIN REQUIRED
ON LEFT	Sta 76+00 16" Cor I.P. 28 ft	Sta 79+62 18" Cor I.P. Length 20 ft	Sta 75+00 to 79+62 Length 462 ft	Sta 89+00 to 90+00 Length 100 ft
75+88 to 76+12 Length 24 ft	1-2-9 concrete 1.5 cu yds.	1-2-9 concrete 1.5 cu yds.	86+96 to 89+00 = 234-	
79+30 to 79+78 = 24-	Sta 82+89 3'x3' Reinforced concrete	RELAYING PIPE CULVERTS		
82+77 to 83+01 = 24-	1-2-9 concrete 5.9 cu yds.	Sta 79+62 18" Cor I.P. 22 ft		
86+34 to 86+58 = 24-	1-3-6 - 10.8 -	Length 18'		
ON RIGHT	Reinforcing steel 126 lbs.			
Sta 75+88 to 76+12 Length 24 ft	Sta 86+96 3'x3' Reinforced concrete			
78+00 to 78+12 = 12-	1-2-9 concrete 6.1 cu yds.			
79+38 to 79+78 = 40-	1-3-6 - 11.0 -			
82+77 to 83+01 = 24-	Reinforcing steel 130 lbs.			
86+34 to 86+58 = 24-				
TOTAL THIS SHEET 320 ft				

REG. NO.	STATE	PROJ. NO.	YEAR	SHEET NO.	TOTAL SHEETS
9	VT.	27	1922	6	75



O.M. Bottom base board North Easterly corner of H Folsom's house. Elev. 330.89
 O.M. Top of South Westerly corner of rock under water tub, 149' of 87+35. Elev. 345.89