

GUARD RAIL REQUIRED

ON LEFT

Sta 45+38 to 45+62	Length 24 ft
- 49+20 - 49+44	- 24 -
- 52+79 - 53+03	- 24 -

ON RIGHT

Sta 45+38 to 45+62	Length 24 ft
- 47+50 - 48+46	- 96 -
- 49+20 - 49+44	- 24 -
- 51+20 - 53+76	- 256 -
- 58+12 - 59+00	- 88 -

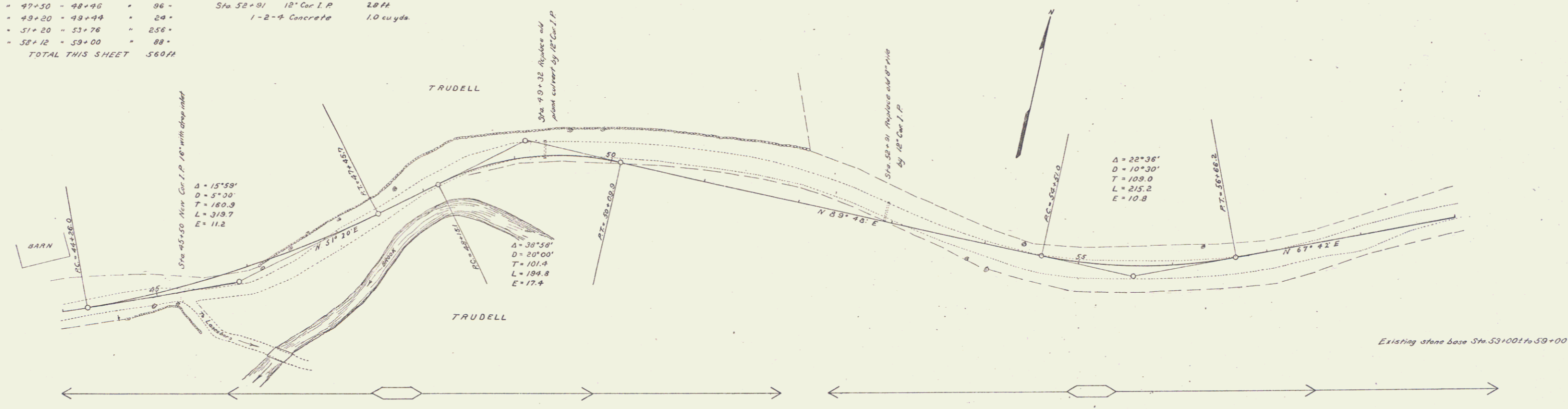
TOTAL THIS SHEET 560 ft

NEW CULVERTS REQUIRED

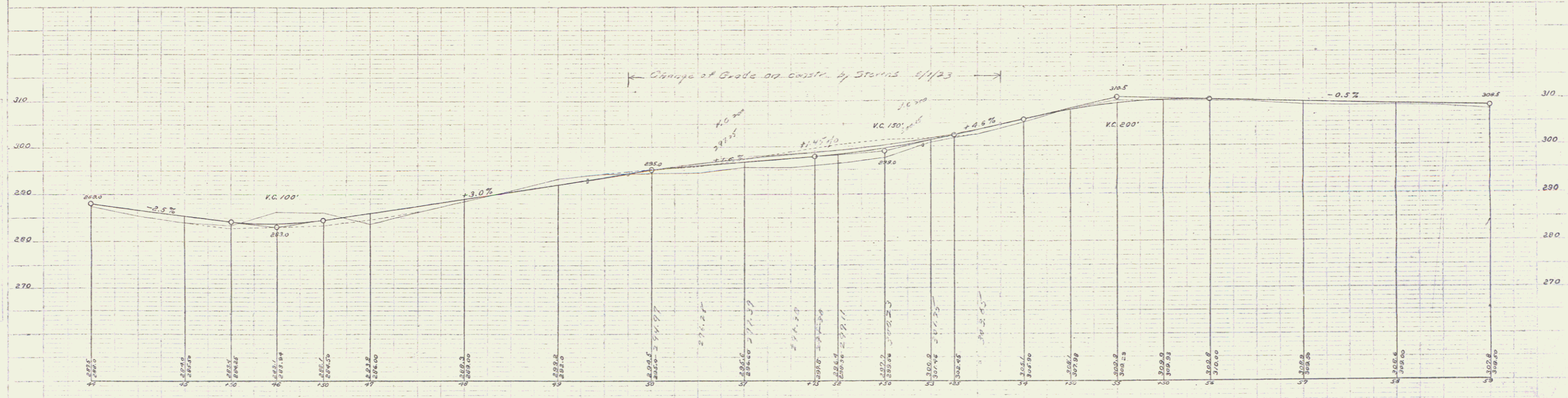
Sta 45+50	18" Cor I.P.	30 ft
With drop inlet		
- 1-2-4 Concrete		1.6 cu yds
Sta 49+32	12" Cor I.P.	28 ft
- 1-2-4 Concrete		1.0 cu yds
Sta 52+91	12" Cor I.P.	28 ft
- 1-2-4 Concrete		1.0 cu yds

FED. ROAD DIST. NO.	STATE	FED. AID PROJ. NO.	FISCAL YEAR	SHEET NO.	TOTAL SHEETS
0	VT.	27	1902	4	76

Checked
E. A. Wilson
A. H. Day



Checked
E. A. Wilson
A. H. Day
A. E. Crandall



Series F. No. 27 filed
Sheet 4 of 76