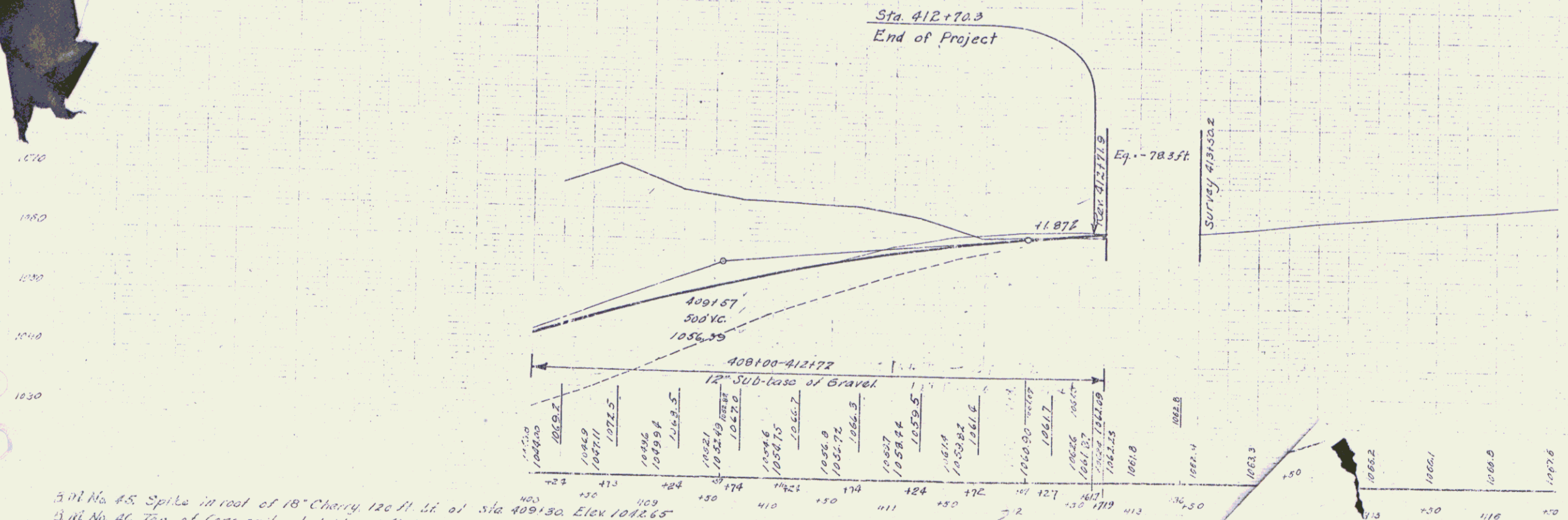
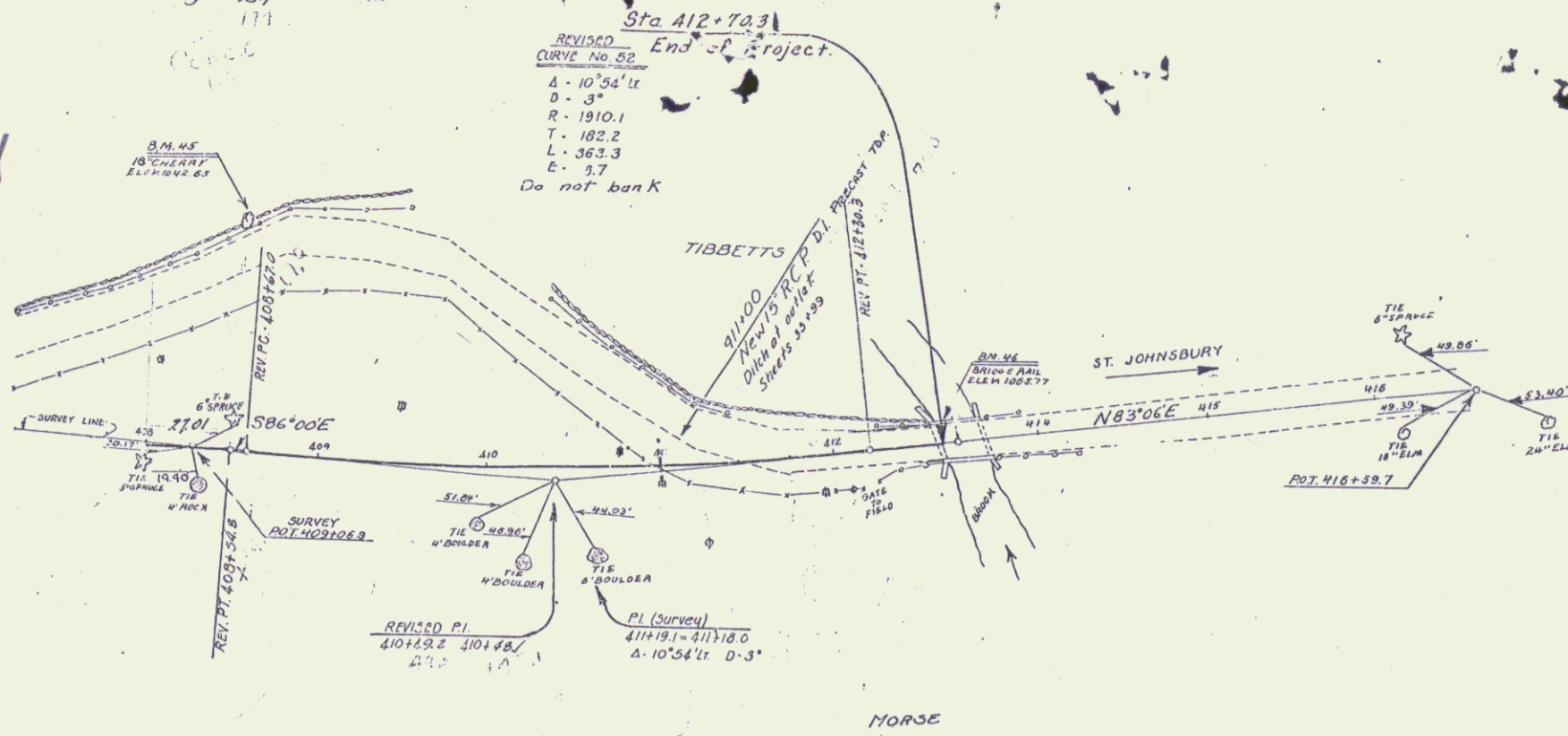


18" CONC. PIPE REQUIRED
 WALK STA LEFT RIGHT
 411+0 24' 24'
 412+0 41' 24'

NEW 18" CONC. PIPE REQUIRED
 Station Curve Length Conc. Steel
 411+0 13 36 156.9 157

POOR ORIGINAL COPY

Sta 412+70.3
 End of Project
 REVISED CURVE No. 52
 Δ - 10°54'18"
 D - 3'
 R - 1910.1
 T - 182.2
 L - 362.3
 E - 3.7
 Do not bank



5 in No. 45 Spike in road of 18" Cherry 120 ft. li. of sta 409+30. Elex 1042.65
 3 in No. 46 Top of Conc rail at bridge 11 ft. li. of sta 413+45. Elex 1055.77

31A

3D