

WOOD GUARD RAIL REQUIRED

Cur. Sta.	Left	Right
382+10	24'	
385+03	24'	
387+50	24'	
389+79	24'	

CABLE GUARD RAIL REQUIRED

Sta.	Sta.	Loc. R.	Length	Concrete	Phy. Length	Sta.	Diam.	Length	Concrete	Steel	D.I. Grade
381+45	388+29	L	704'	80	784'	382+18	15"	48'	27 c.y.	15 c.y.	17"
387+00	387+76	L	76'	90	136'	384+03	18"	48'	14	102	17"
						387+50	18"	36'	14	99	17"
						389+76	R	12'	128'		17"
						391+00	R	-	1.4 c.y.	99'	17"

NEW REINF. CONC. PIPE CULVERTS REQUIRED

Station	Size	Conc. A	Steel	D.I. Grade
389+76	5'x5'	328 c.y.	2966'	

REINF. CONC. BOX CULVERTS REQUIRED

Station	Size	Conc. A	Steel
389+76	5'x5'	328 c.y.	2966'

CONCRETE CURB REQUIRED

Sta.	Sta.	Loc. R.	Length	Width	Area
387+35	387+50	R	15'	4'-6"	102 sq. ft.

SPROUTED CABLE CUTTER REQUIRED

Station	Station	Loc. R.	Length	Width	Area
381+50	Runoff	L	20'	4'-6"	102 sq. ft.

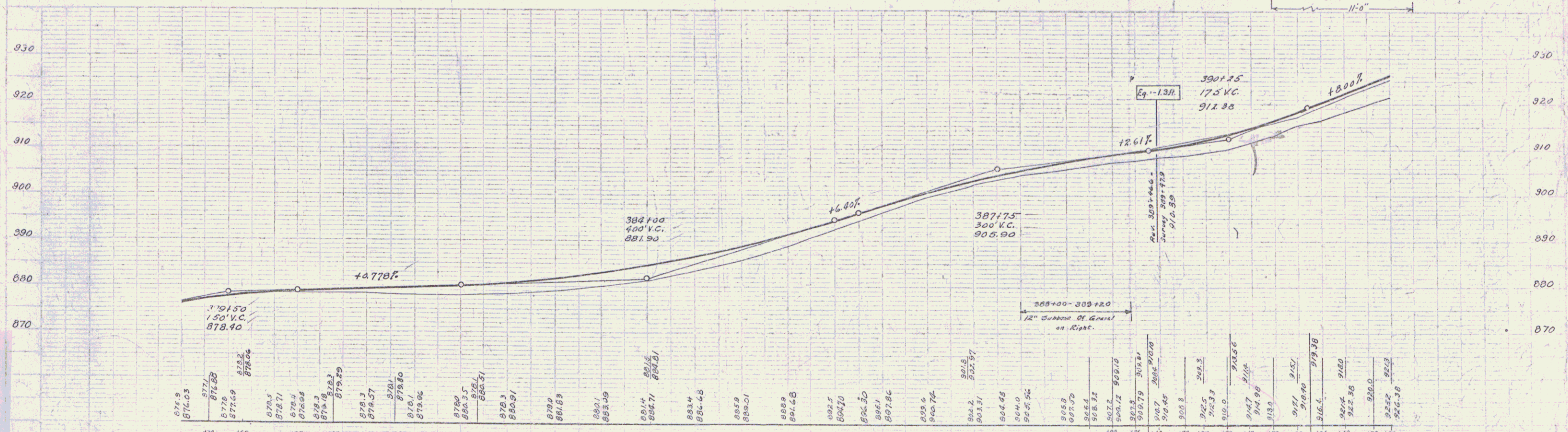
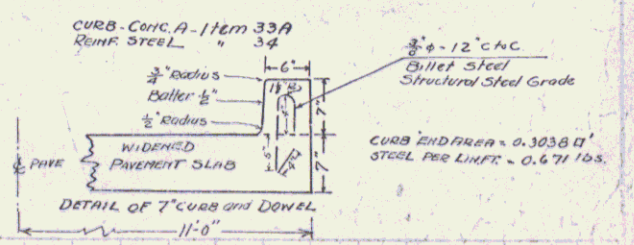
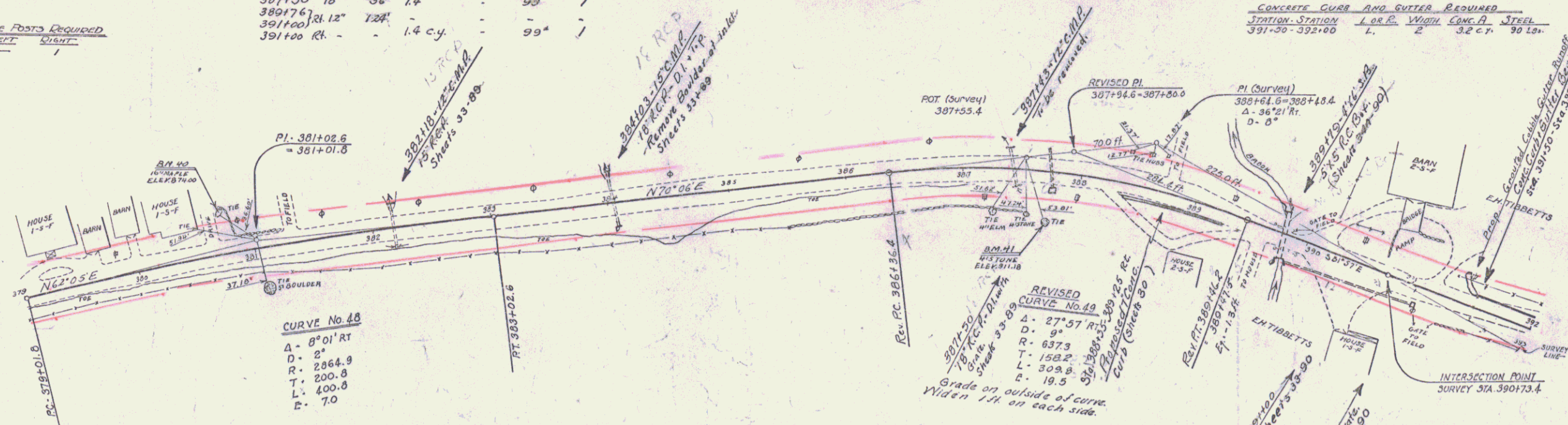
DATE: 1970 7 30 99
 VI: 970 7930 30 99

WOOD GUARD POSTS REQUIRED

Sta.	Left	Right
391+00		1

CONCRETE CURB AND CUTTER REQUIRED

Station	Station	Loc. R.	Width	Conc. A	Steel
391+50	392+00	L	5'	3.2 c.y.	90 lb.



B.M. No. 40, Spike in root of 16' Maple, 33 ft. Li. of Sta. 380+76 Elev. 874.00
 B.M. No. 41, Top of Boulder, 41 ft. RH of Sta. 387+75 Elev. 911.18

SERIES OF 97D
 SHEET 30 OF 03