

WOOD CURB REQUIRED

CULV STA	LEFT	RIGHT
370+70	2'	—
372+26	2'	—
373+35	2'	—

WOOD GUIDE Posts Required

STATION	LEFT	RIGHT
370+70	—	1
372+26	—	1
373+35	—	1

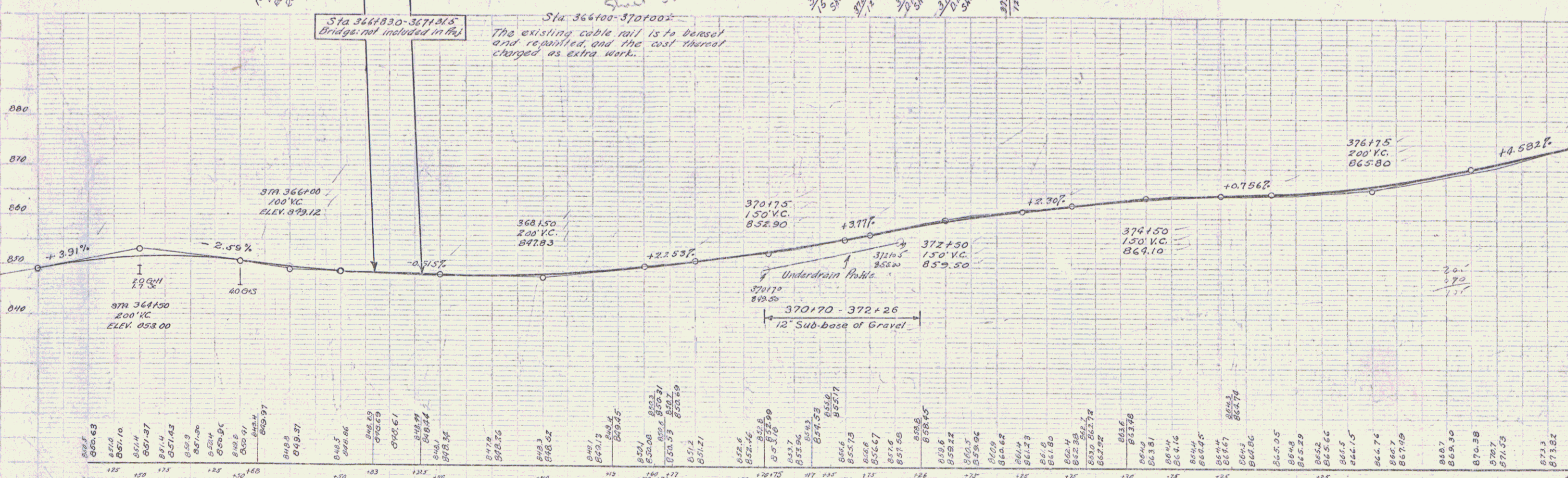
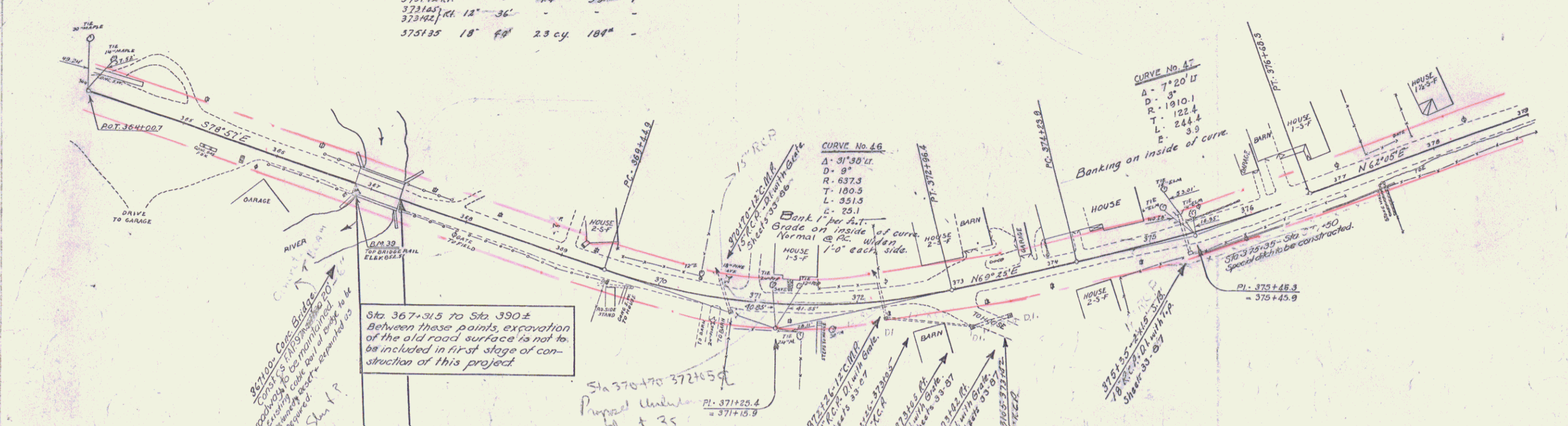
NEW REIN. CONC. PIPE CULVERTS REQUIRED

Station	Diam	Length	Conc. R.	Steel D.	Grate
370+70	18"	36'	1804	99"	—
372+26	18"	36'	1804	99"	—
373+35	18"	36'	1804	99"	—
373+42	18"	36'	1804	99"	—
375+35	18"	36'	1804	99"	—

SPR UNDERDRAIN WITH 6" R.C.G.P.

Stations	Length
370+70 - 372+26	140 ft

PER. ROAD STATE FISCAL YEAR
 DIST. NO. 101 1970 1930 29 99



B.M. 39 - Top of Conc. Bridge rail, 11 ft. Rl. of Sta. 366+00. Elev. 852.51

SERIES OF 310 SHEET 27 OF 99