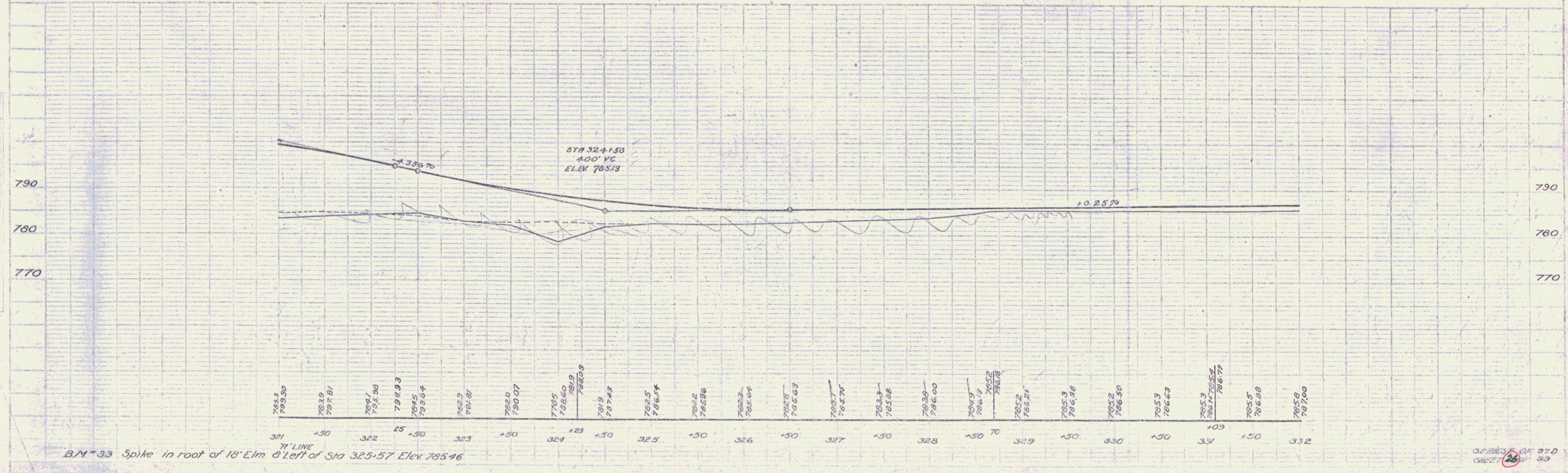
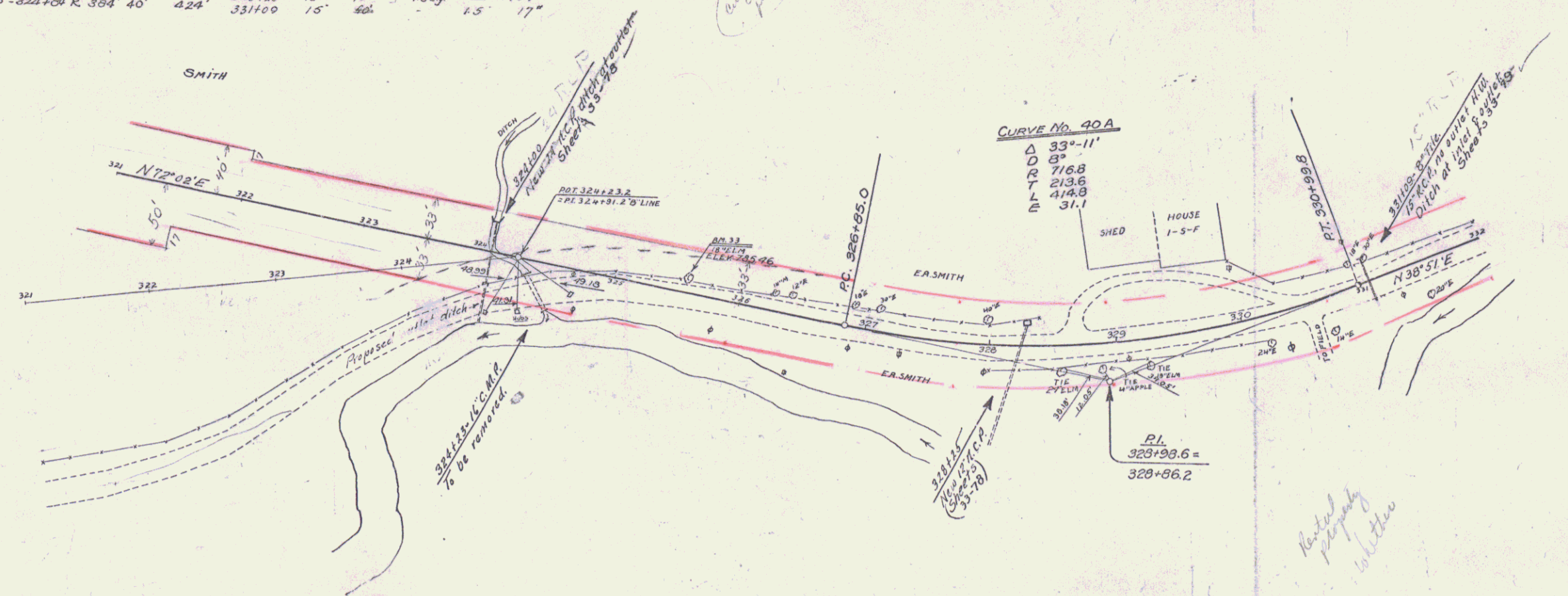


WOOD GUARD RAIL REQUIRED			CABLE GUARD RAIL REQUIRED			NEW REIN. CONC. PIPE CULVERTS REQUIRED					
CULVERT STATION	LEFT	RIGHT	STATIONS	LENS	CONSTANT	Station	Diam.	Length	Curve R.	Curve G.	Steel
331+09	24'	24'	331+75-332+00	R	25'	40'	6"				
328+25	24'	24'	321+00-324+52	L	352'	40'	392'	324+00	24"	48'	24"x4"
			321+00-324+58	R	354'	40'	424'	331+00	15"	60'	15"x3"

STATE OF VERMONT
 1930
 26 89



OF 27.0 SHEET 26 89