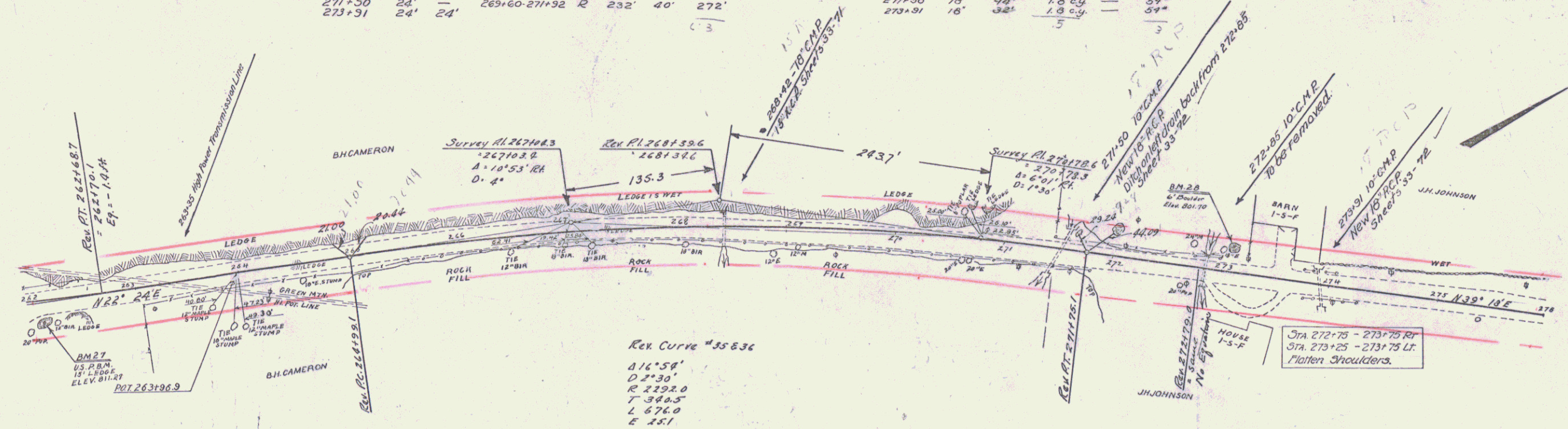


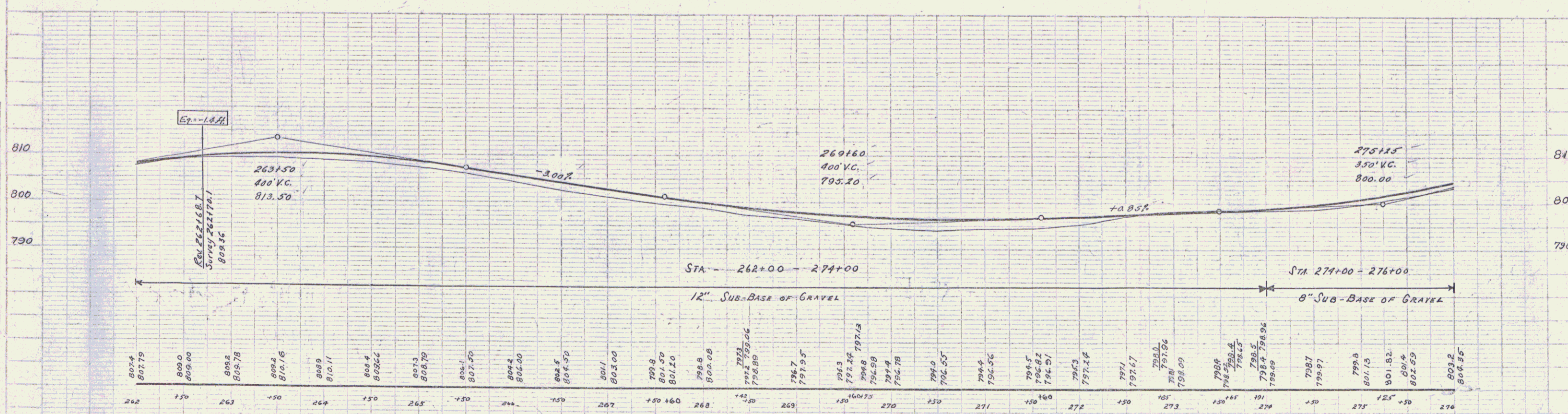
| WOOD GUARD RAIL REQUIRED |      |       | CABLE GUARD RAIL REQUIRED |        |            |
|--------------------------|------|-------|---------------------------|--------|------------|
| CUV. STATION             | LEFT | RIGHT | STA                       | STA    | LOF        |
| 268+42                   | 24'  | -     | 263+40                    | 269+60 | R 320' 40' |
| 271+30                   | 24'  | -     | 269+60                    | 271+92 | R 232' 40' |
| 273+31                   | 24'  | 24'   |                           |        |            |

| New Paint Concrete Pipe Culverts Required |      |        |                   |       |
|---|------|--------|-------------------|-------|
| Station                                   | Diam | Length | Conc. Cont. Steel | Notes |
| 269+42                                    | 15"  | 33'    | 1.8 cy            | 7.5'  |
| 271+00                                    | 15"  | 94'    | 1.8 cy            | 54'   |
| 273+91                                    | 18"  | 32'    | 1.8 cy            | 54'   |

SCALE 1" = 20' 0.9  
 DATE 1 22 09



NOTE: All rock which may be excavated over the section from Sta 262-271 is to be used in the embankment on right of Sta 266-267.



B.M. #27 U.S.R.B.M. Top 15' Boulder 15' Rt. of 262+20 Elevation 811.27  
 B.M. #28 6' Boulder by Red Barn 18.5' Lt. of 273+05 Elevation 801.70

SERIES OF 370  
 2 OF 99