

WOOD GUARD RAIL REQUIRED

STATION	LEFT	RIGHT
219+80	24'	

CABLE GUARD RAIL REQUIRED

STA	Sta	Len	Const	Any Length
219+75	220+35	R	160'	40'
223+00	225+80	R	240'	40'
224+09	226+25	L	216'	40'

REIN. CONC. PIPE GULVERT REQUIRED

STA.	DIA.	LENG.	CONG.	CONG. & STEEL
219+75	18"	40'	1.8 cu yd.	54#
224+79	30"	52'	3.2 cu yd.	58#

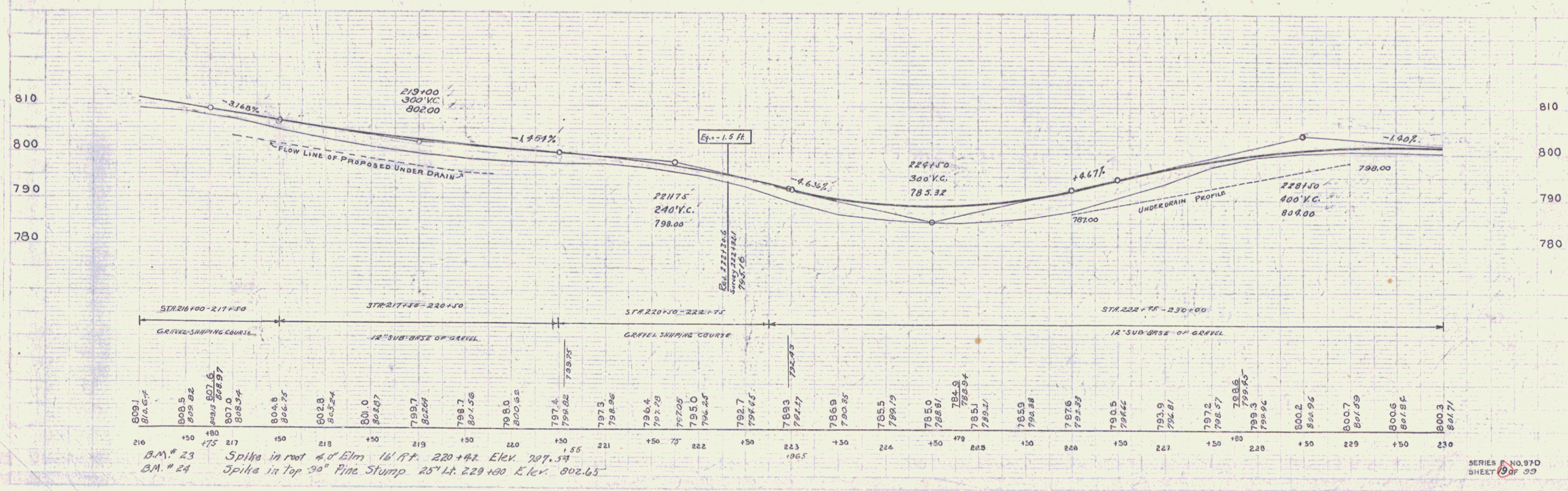
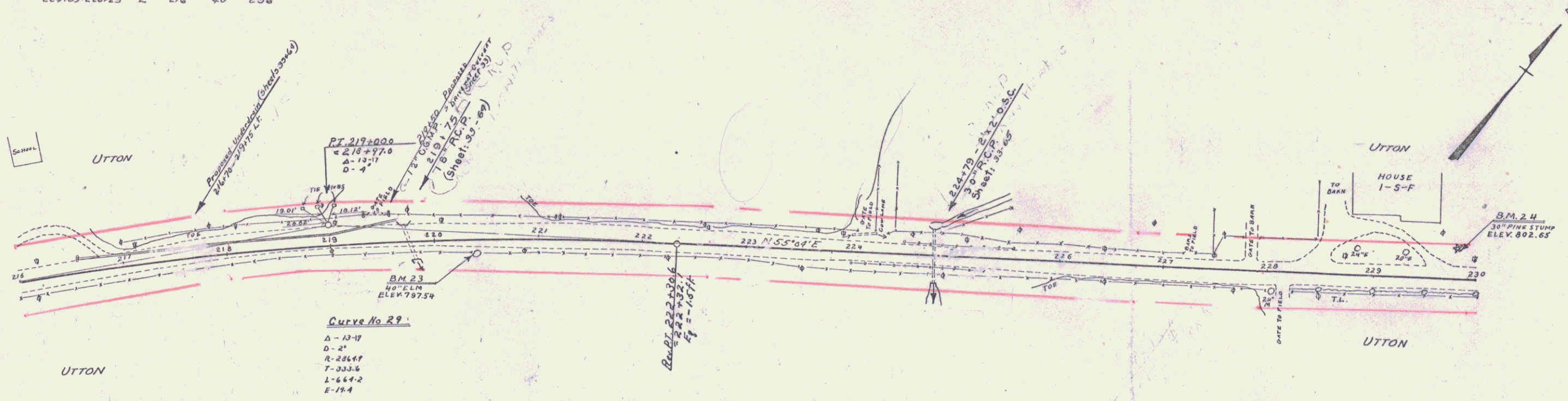
STD UNDERDRAIN WITH P.C.G.M.P. (Cover)

STATIONS	DIA.	LENG.	CEM. RUB. MS.
216+30 - 219+75	6"	320'	
226+00 - 229+00	6"	300'	1.2 cu yds.

C.G.M. PIPE REQUIRED

STA.	DIA.	LENG.	CEMENT RUB. MS.
224+10 LF	18"	24'	R.3 C.Y.

STATE ROAD DIST. NO. 110
 DIST. NO. 110
 DATE 97-D-1930 19 99



PUTNAM
 HINMAN

PUTNAM
 F.W. Hayward

B.M. # 23 Spike in root 4.0' Elm 16' W. 220+42 Elev. 797.54
 B.M. # 24 Spike in Top 30" Pine Stump 25' W. 229+00 Elev. 802.65

SERIES NO. 97D
 SHEET 17 OF 30