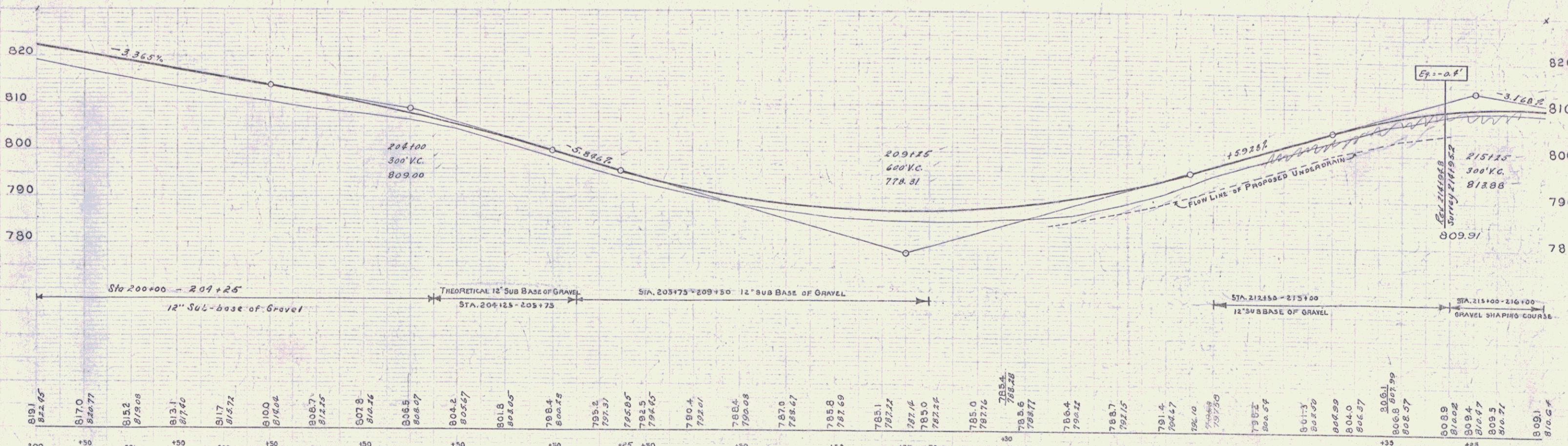
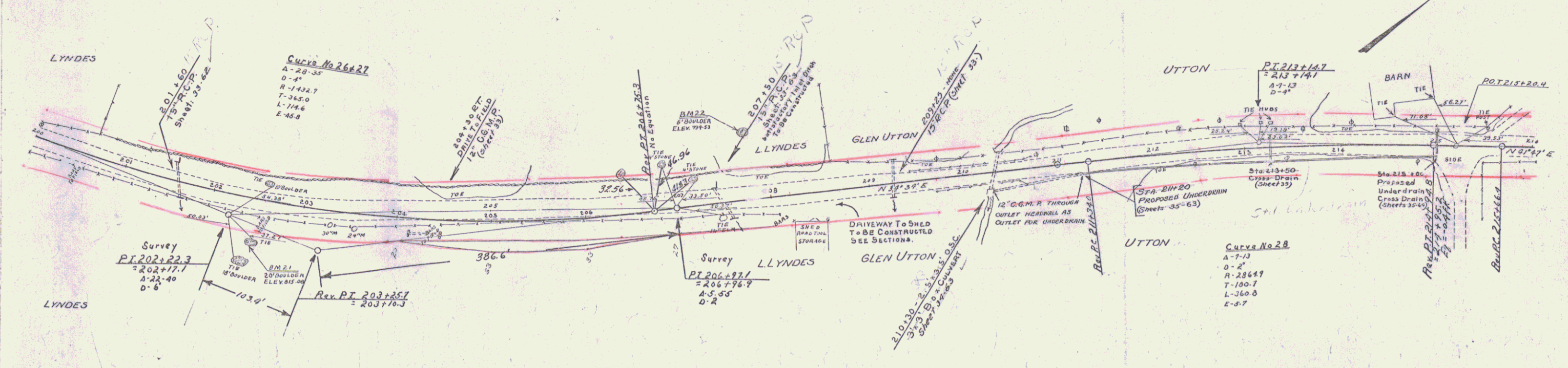


WOOD GUARD RAIL REQUIRED			CABLE GUARD RAIL REQUIRED			REINF. CONC. PIPE CULVERT REQUIRED				REINF. CONC. BOX CULVERTS REQUIRED			STD. UNDERDRAIN WITH P.C.G.M. PIPE (CONT'D)			CORRUG. GALV. METAL PIPE REQUIRED					
CULVERT STA.	LEFT	RIGHT	STATIONS	LENG.	CONSTANT	PAY LEVS.	STA.	DIA.	LENG.	CONC. A	CONC. C	STEEL	STATIONS	DIA.	LENG.	CEM. RUB. MAS.	STA.	DIA.	LENG.	CEM. RUB. MAS.	
201+50	24'	-	201+13-202+25.4	112'	40'	12'	201+50	15"	44'	1.9	1.5	99#	210+30-213+00	6"	380'	-	204+30 RT.	12"	28'	-	2.3 C.C.
207+50	24'	-	207+25-207+73	48'	40'	8'	207+50	15"	40'	1.9	1.5	99#	213+50	6"	34'	-	210+70 RT.	12"	100'	-	-
			209+10-211+10	100'	40'	20'	209+25	15"	40'	-	3.0	33#	213+50	6"	28'	-					

97-D 1930 18 99



B.M. # 21 U.S.I.B.M. Top of Boulder 42' 77' 202+50 Elev. 815.00
 B.M. # 22 Top of Boulder in Pasture 67' 11' 207+76 Elev. 794.53